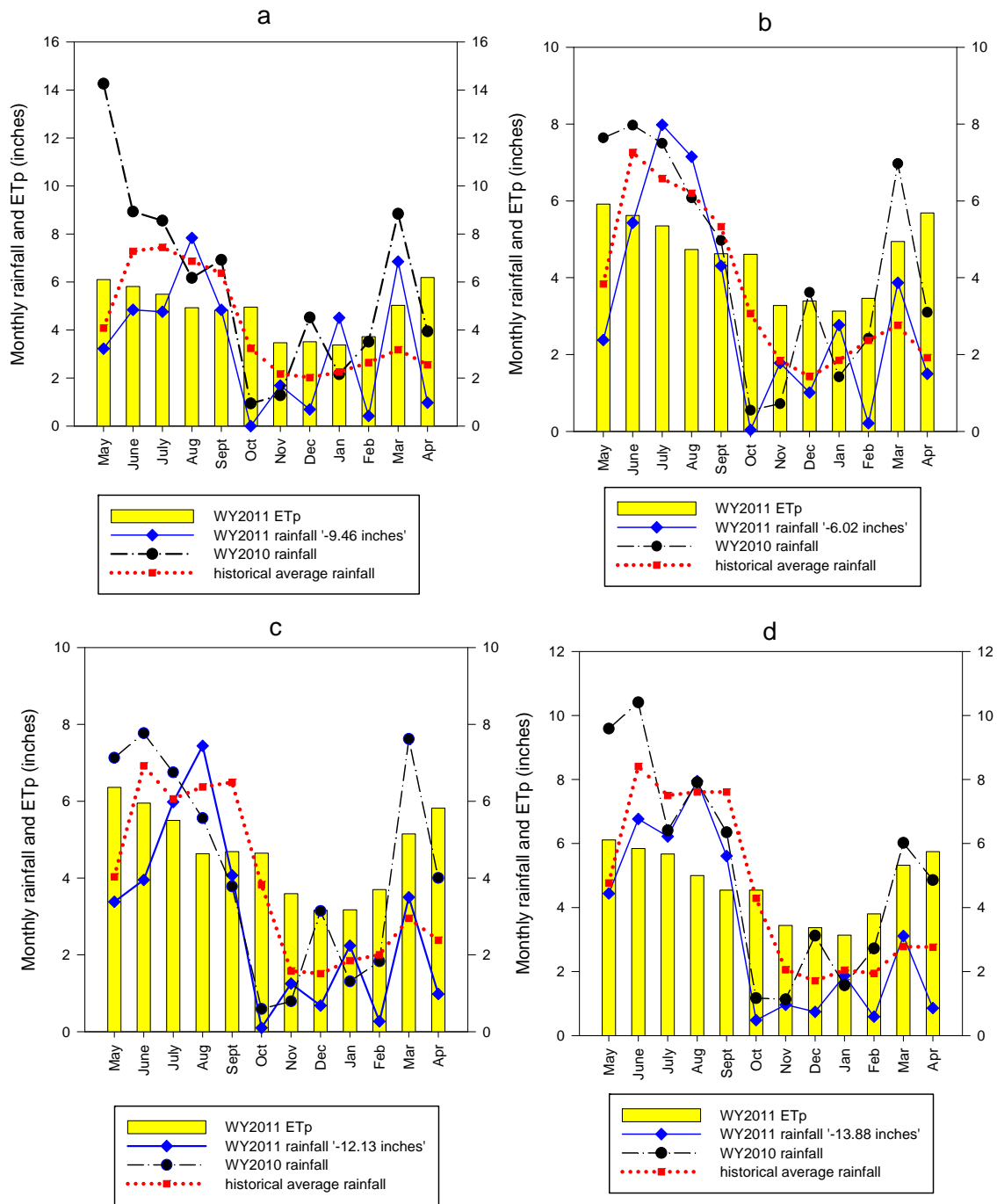
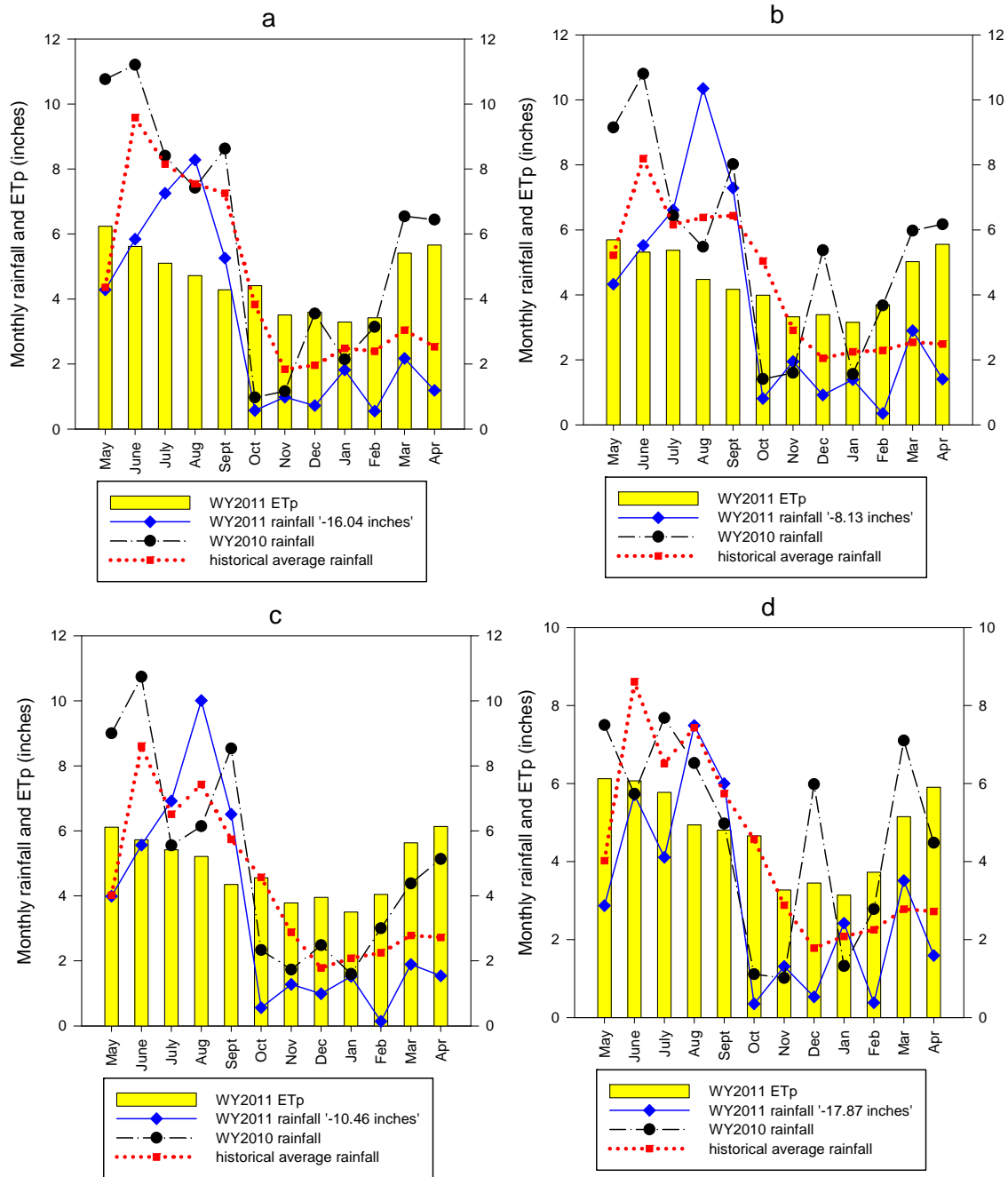


# **Appendix 2-2: Water Year 2010 and 2011 Monthly Rainfall, Historical Average Rainfall and Water Year 2011 Potential Evapotranspiration**

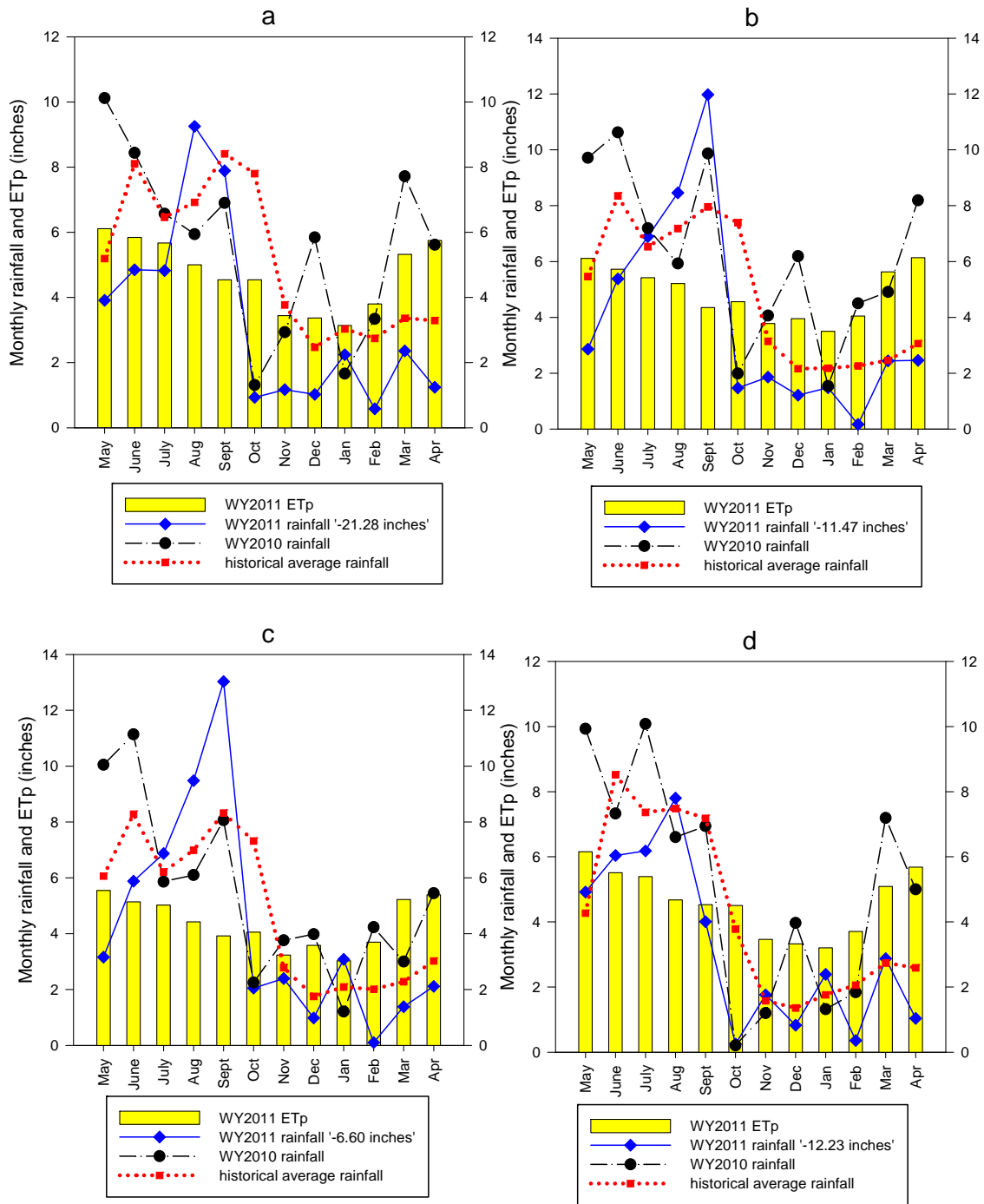
Wossenu Abtew and Violeta Ciuca



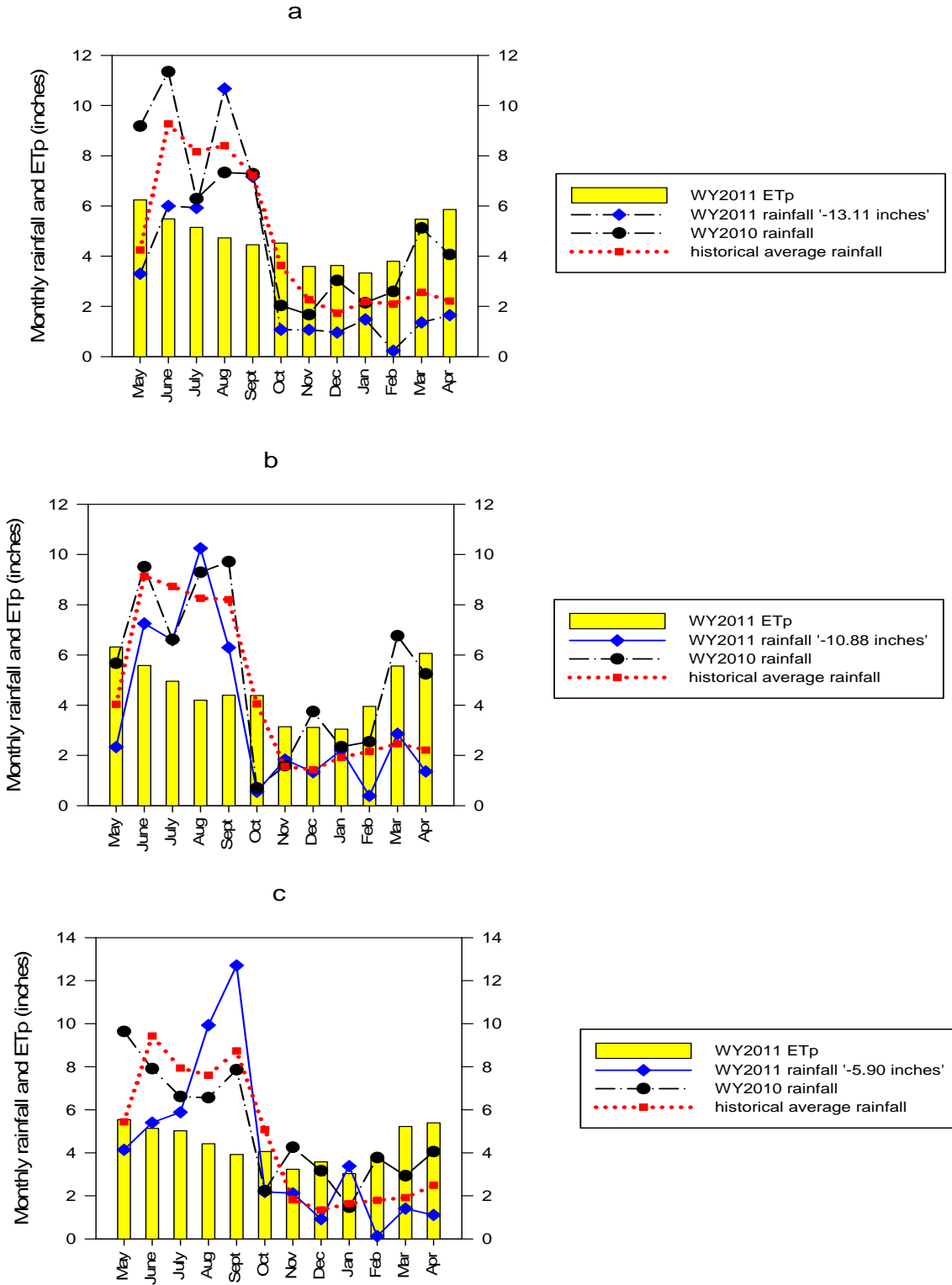
**Figure 1.** Monthly rainfall and potential evapotranspiration (ETp) for Upper Kissimmee (a), Lower Kissimmee (b), Lake Okeechobee (c), and East Everglades Agricultural Area (d) rainfall areas.



**Figure 2.** Monthly rainfall and potential evapotranspiration (ETp) for West Everglades Agricultural Area (a), Water Conservation Areas 1 and 2 (b), Water Conservation Area 3 (c), and Martin/St. Lucie (d) rainfall areas.



**Figure 3.** Monthly rainfall and potential evapotranspiration (ETp) for Palm Beach (a), Broward (b), Miami-Dade (c), and East Caloosahatchee (d) rainfall areas.



**Figure 4.** Monthly rainfall and potential evapotranspiration (ETp) for Big Cypress Preserve (a), Southwest Coast (b), and Everglades National Park (c) rainfall areas.