

Appendix 5-9: Graphic Summary of Residual Differences Measured to Calculate Site-Specific Alternative Criteria Limits

Nenad Iricanin

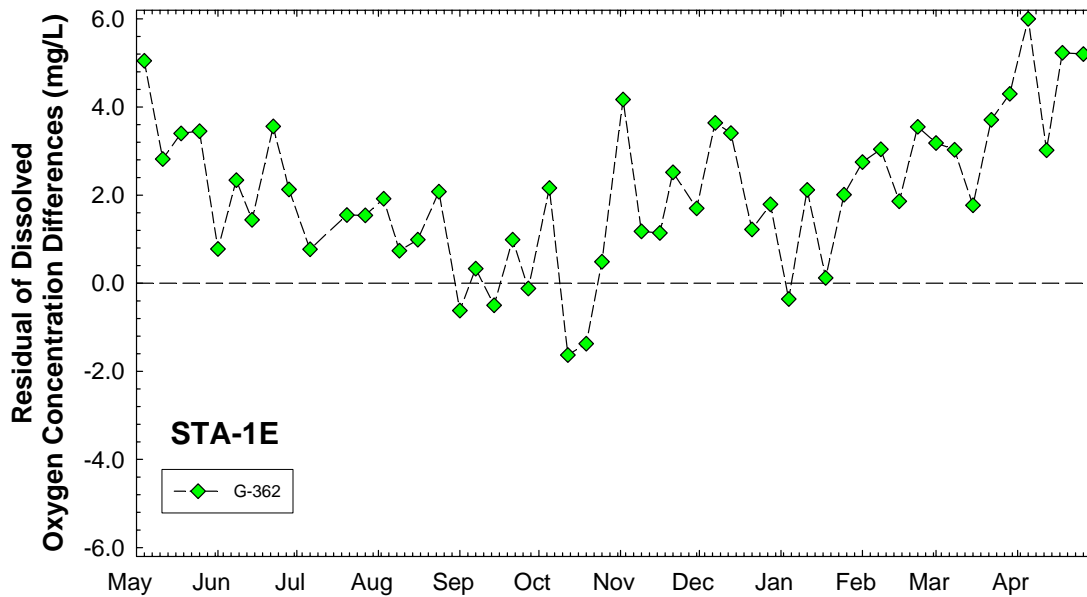


Figure 1. Biweekly residuals of the differences between measured dissolved oxygen (DO) concentrations and site-specific alternative criteria (SSAC) limits calculated from corresponding water temperatures and time of day at the outflow from Stormwater Treatment Area 1 East (STA-1E). Values equal to or above the zero line are indicative of DO levels which meet or exceed the SSAC limit. Those below the zero line do not meet the SSAC limit.

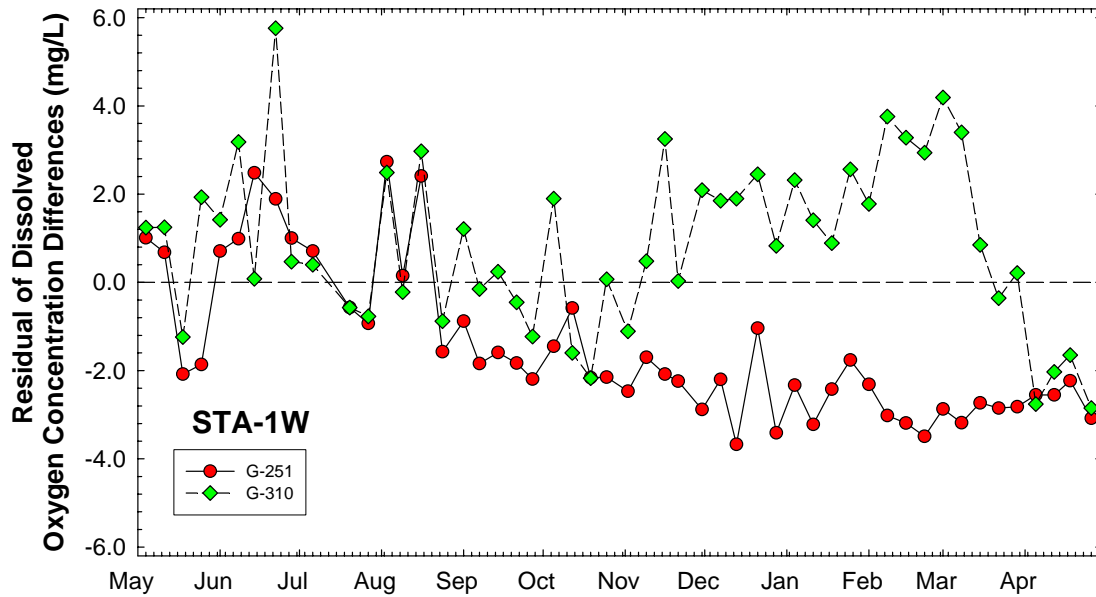


Figure 2. Biweekly residuals of the differences between measured DO concentrations and SSAC limits calculated from corresponding water temperatures and time of day at the outflow from Stormwater Treatment Area 1 West (STA-1W). Values equal to or above the zero line are indicative of DO levels which meet or exceed the SSAC limit. Those below the zero line do not meet the SSAC limit.

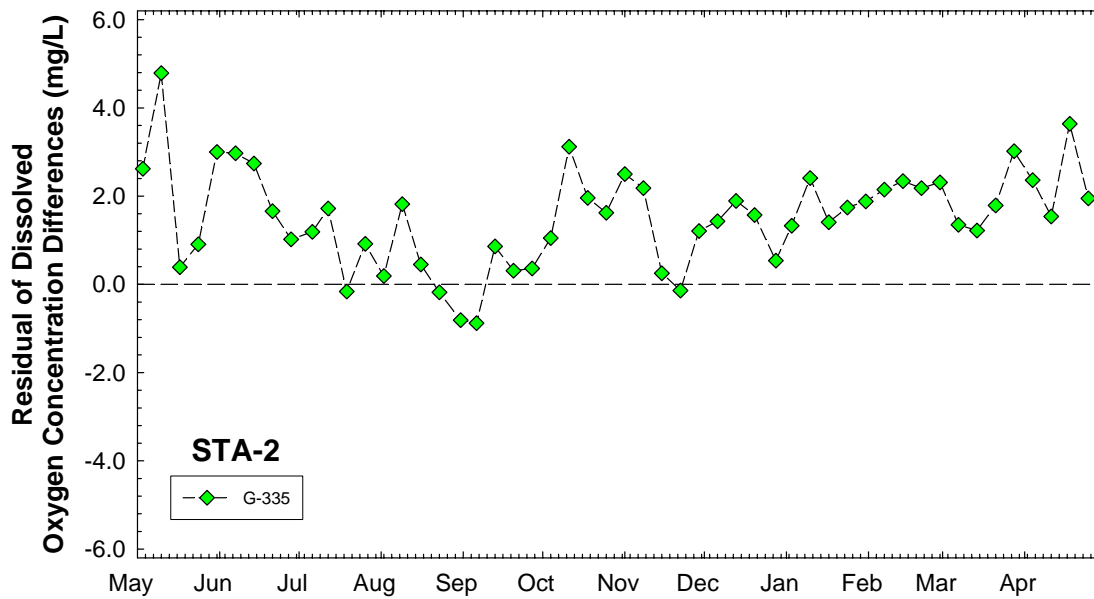


Figure 3. Biweekly residuals of the differences between measured DO concentrations and SSAC limits calculated from corresponding water temperatures and time of day at the outflow from Stormwater Treatment Area 2 (STA-2). Values equal to or above the zero line are indicative of DO levels which meet or exceed the SSAC limit. Those below the zero line do not meet the SSAC limit.

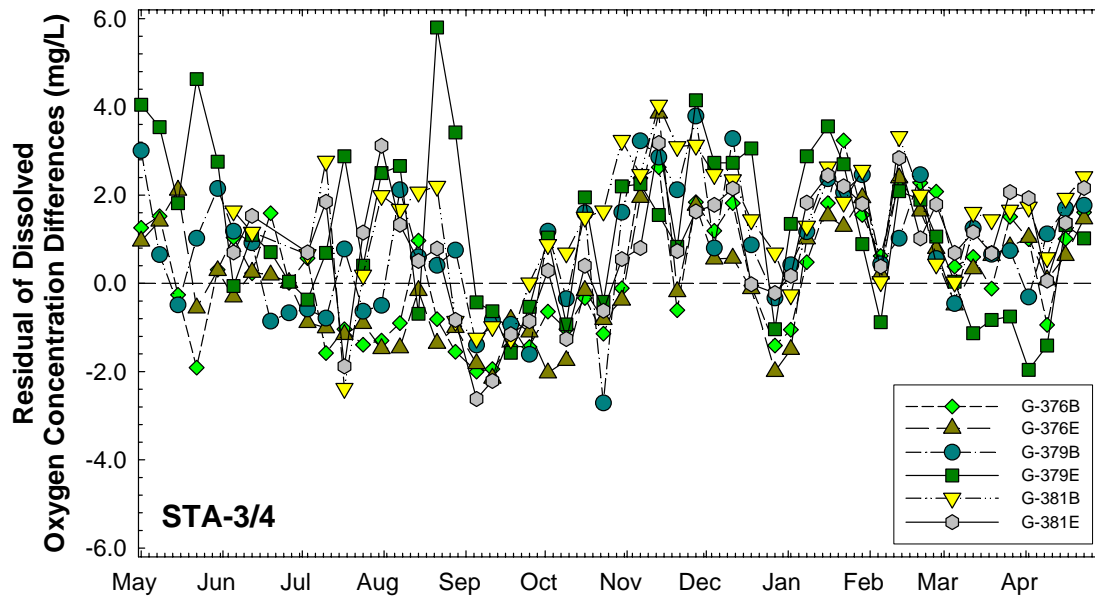


Figure 4. Biweekly residuals of the differences between measured DO concentrations and SSAC limits calculated from corresponding water temperatures and time of day at the outflow from Stormwater Treatment Area 3/4 (STA-3/4). Values equal to or above the zero line are indicative of DO levels which meet or exceed the SSAC limit. Those below the zero line do not meet the SSAC limit.

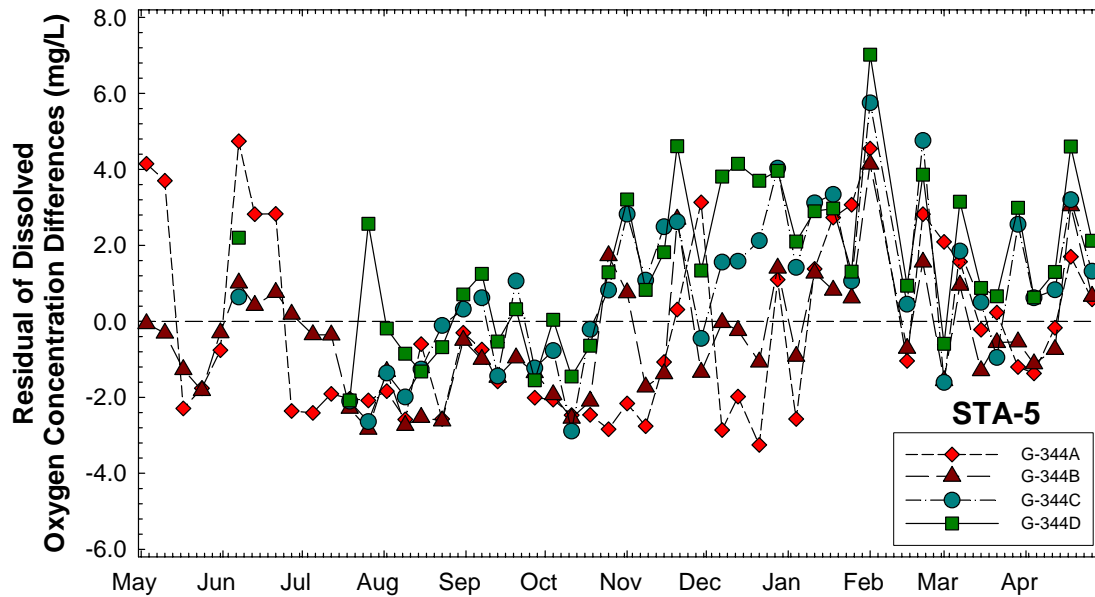


Figure 5. Biweekly residuals of the differences between measured DO concentrations and SSAC limits calculated from corresponding water temperatures and time of day at the outflow from Stormwater Treatment Area 5 (STA-5). Values equal to or above the zero line are indicative of DO levels which meet or exceed the SSAC limit. Those below the zero line do not meet the SSAC limit.