

Appendix 5-11: Water Year 2006 Diel Data for STA-3/4

Nenad Iricanin

Table 1. Statistical summary of diel parameters at STA-3/4 inflow (G370 and G372) and outflow stations (ST34EDC and ST34WDC) for each deployment period during Water Year 2006.

Period	Location	Station	Water Temperature (°C)					Specific Conductivity (µS/cm)					Water pH					Dissolved Oxygen (mg/L)								
			No. of Samples	Mean	Minimum	Median	Maximum	Standard Deviation	No. of Samples	Mean	Minimum	Median	Maximum	Standard Deviation	No. of Samples	Mean	Minimum	Median	Maximum	Standard Deviation	No. of Samples	Mean	Minimum	Median	Maximum	Standard Deviation
09/23/2005 - 09/26/2005	Inflow	G370	139	28.80	27.70	28.82	29.87	0.56	139	1081.1	1067	1085	1117	8.3	139	7.69	7.21	7.72	7.95	0.19	139	5.61	2.80	5.83	8.91	1.57
	Inflow	G372	142	28.21	27.87	28.22	28.65	0.16	142	1064	1059	1061	1114	9.2	142	7.44	7.39	7.44	7.54	0.04	142	2.98	2.53	2.86	3.88	0.34
	Outflow	ST34EDC	141	28.06	27.44	28.02	28.73	0.30	141	805	701	777	952	83.5	141	7.45	7.41	7.45	7.50	0.03	141	2.57	1.97	2.58	2.84	0.13
	Outflow	ST34WDC	141	28.70	28.07	28.66	29.53	0.34	141	721.2	682	714	749	17.8	141	7.70	7.64	7.70	7.76	0.03	141	4.93	4.34	4.94	5.49	0.28
12/12/2005 - 12/16/2005	Inflow	G370	181	20.75	19.88	20.72	21.78	0.45	181	1270.6	1264	1270	1280	2.8	181	7.79	7.65	7.80	7.92	0.05	181	6.91	6.27	6.74	8.71	0.58
	Inflow	G372	181	20.94	20.19	20.77	22.40	0.59	181	1147	1144	1147	1155	1.9	181	7.80	7.74	7.81	7.88	0.03	181	6.64	6.28	6.64	7.24	0.17
	Outflow	ST34EDC	181	20.52	19.66	20.41	22.07	0.65	181	778.2	708	780	838	26.9	181	7.56	7.51	7.56	7.67	0.03	181	3.91	3.40	3.79	5.31	0.40
	Outflow	ST34WDC	181	21.32	20.75	21.29	22.32	0.37	181	802.5	755	806	821	15.4	181	7.64	7.54	7.64	7.76	0.04	181	5.25	4.52	5.17	6.42	0.39
03/24/2006 - 03/27/2006	Inflow	G370	140	21.29	19.98	21.13	23.19	0.88	140	656.9	475	674.5	760	83.5	140	7.27	7.20	7.26	7.45	0.05	140	5.00	4.58	5.00	6.04	0.30
	Inflow	G372	139	21.64	20.24	21.35	23.60	0.99	139	704	473	763	783	106.1	139	7.59	7.55	7.58	7.74	0.04	139	5.64	5.08	5.56	6.64	0.33
	Outflow	ST34EDC	144	20.11	17.03	19.16	24.09	2.20	144	797.1	750	780	867	42.1	144	7.77	7.50	7.68	8.15	0.17	144	6.86	5.20	6.78	9.83	1.04
	Outflow	ST34WDC	143	21.90	20.09	21.87	24.11	1.04	143	732.4	727	732	741	3.3	143	8.11	8.00	8.11	8.15	0.02	143	7.46	7.10	7.48	7.80	0.17

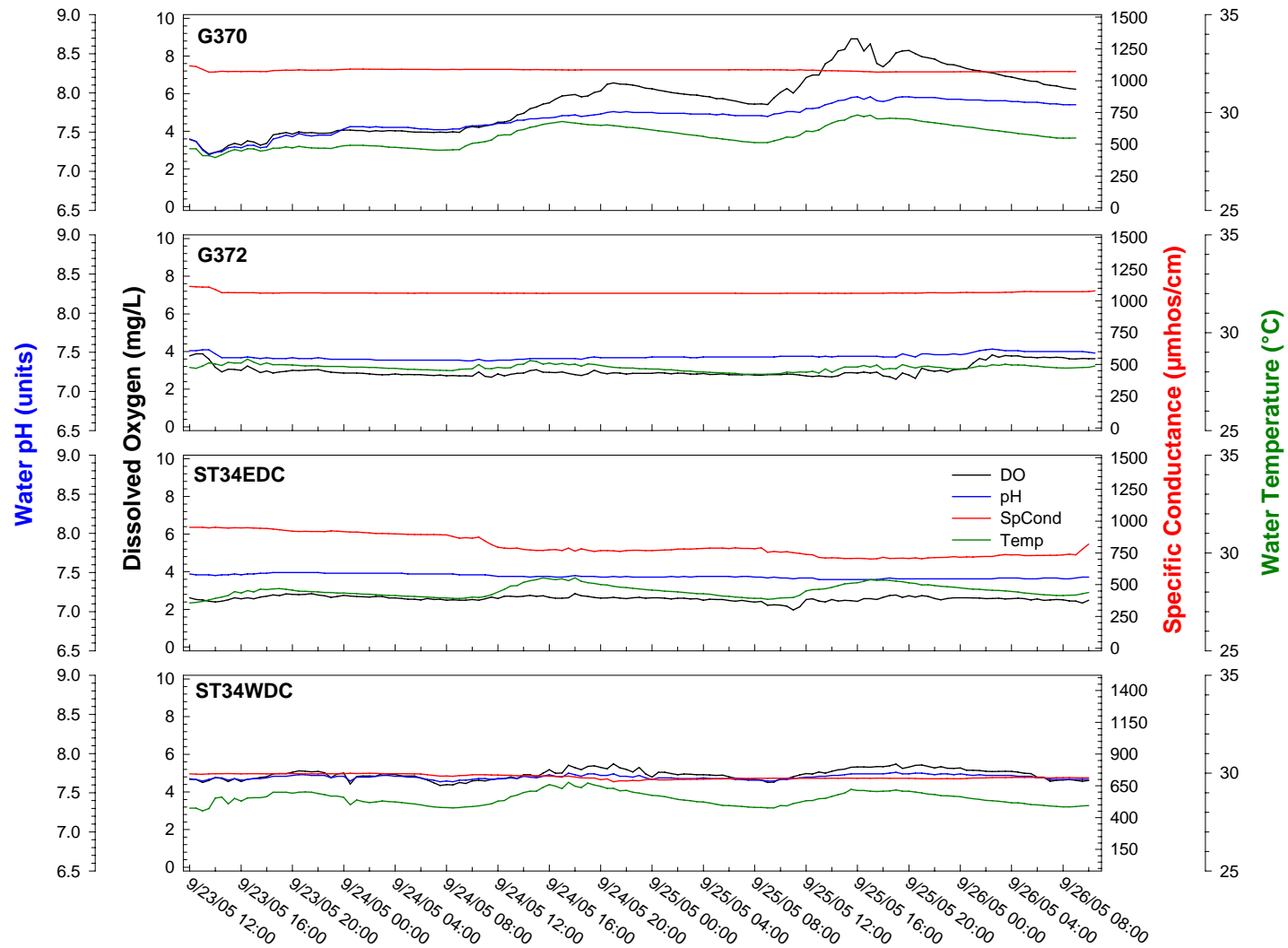


Figure 1. Diel measurements at G370, G372, ST34EDC, and ST34WDC in STA-3/4, September 23–26, 2005.

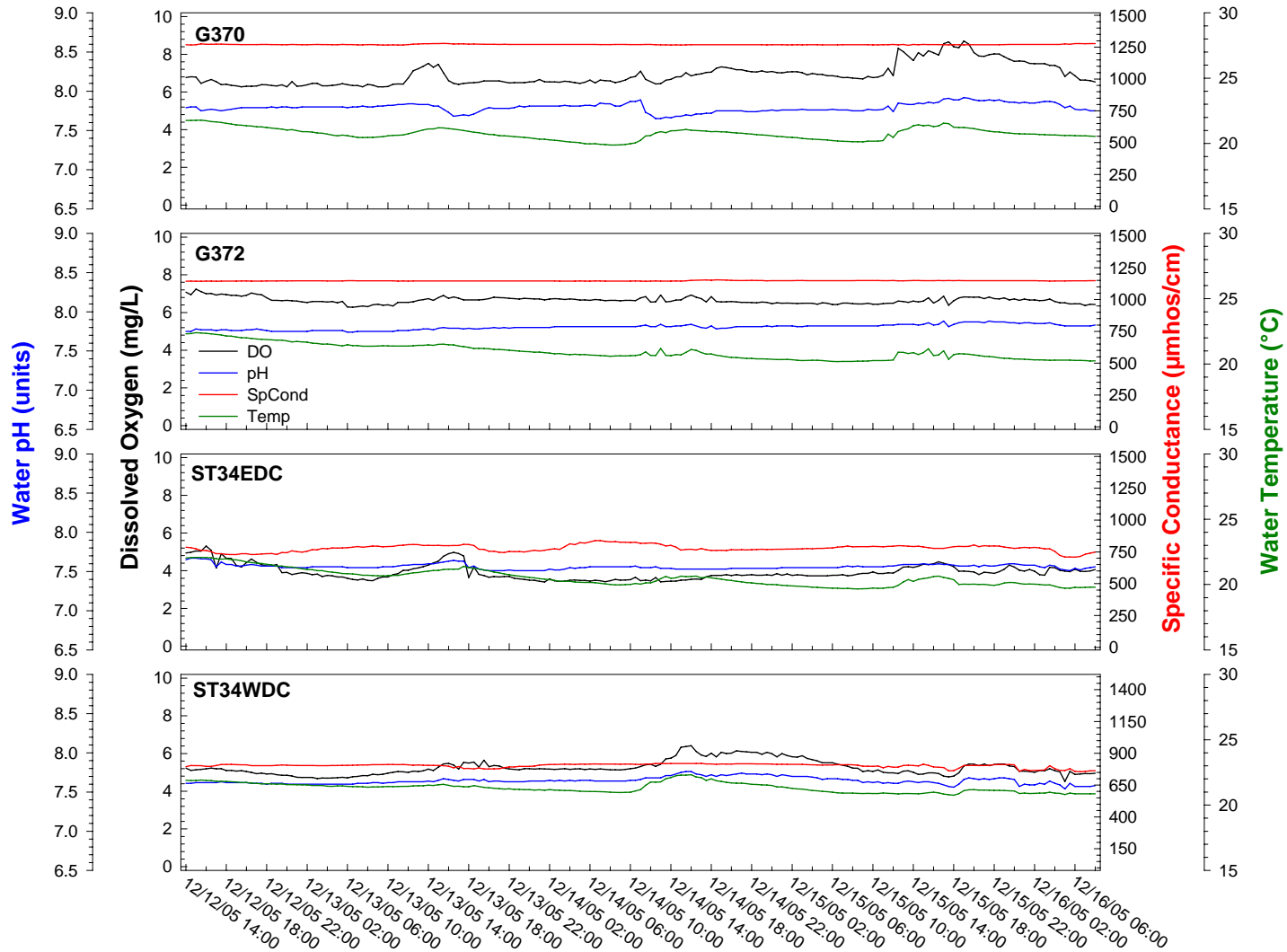


Figure 2. Diel measurements at G370, G372, ST34EDC, and ST34WDC in STA-3/4, December 12–16, 2005.

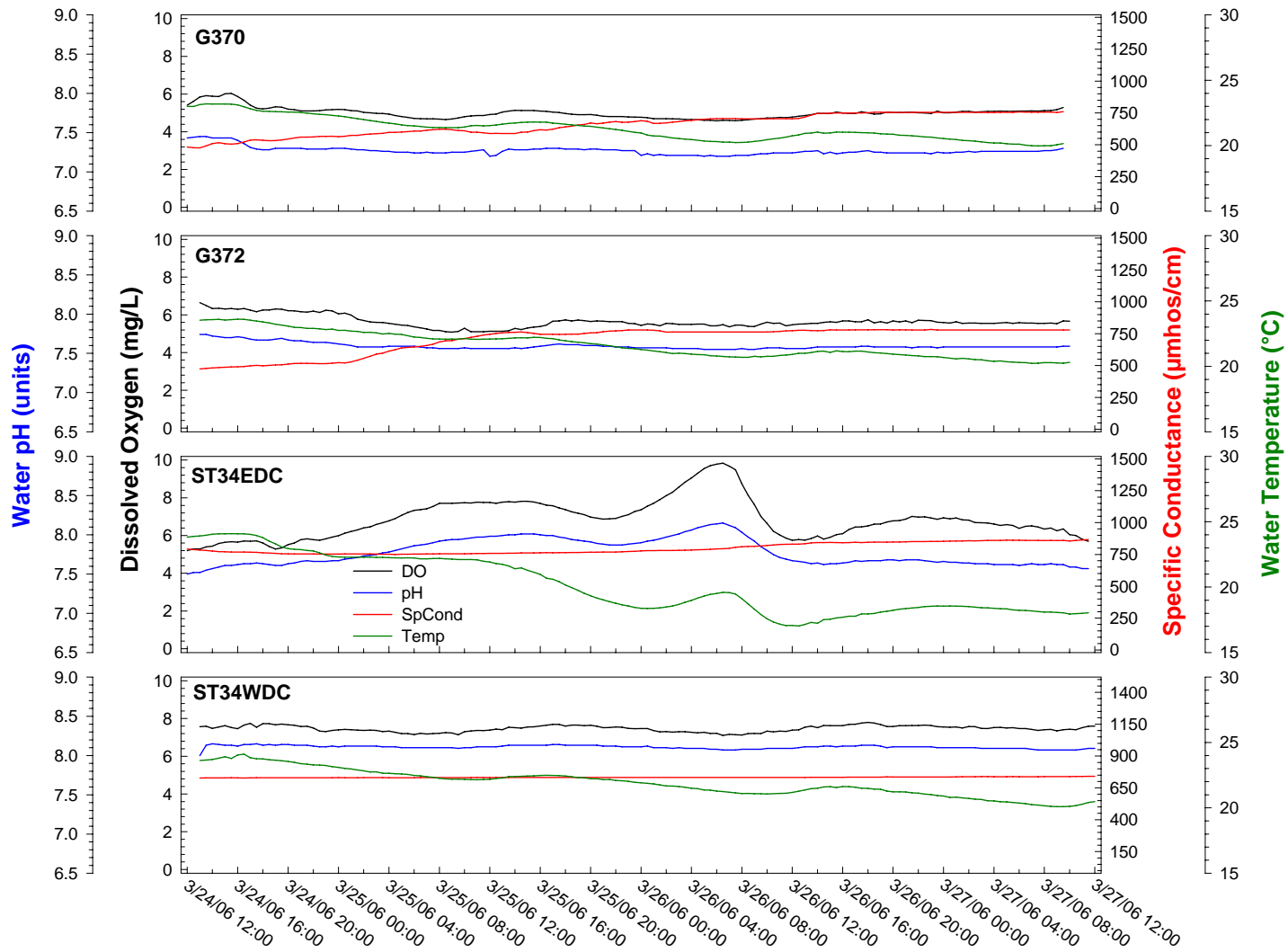


Figure 3. Diel measurements at G370, G372, ST34EDC, and ST34WDC in STA-3/4, March 24–27, 2006.