

# **Appendix 4-8: Water Year 2005 Diel Data for STA-2**

Nenad Iricanin

**Table 1.** Statistical summary of diel parameters at the outflow stations from STA-2 and marsh stations in the WCA-2 for each deployment period.

Period	Location	Station	Temperature (°C)						Specific Conductivity (µS/cm)						Water pH						Dissolved Oxygen (mg/L)					
			No. of Samples	Mean	Minimum	Median	Maximum	Standard Deviation	No. of Samples	Mean	Minimum	Median	Maximum	Standard Deviation	No. of Samples	Mean	Minimum	Median	Maximum	Standard Deviation	No. of Samples	Mean	Minimum	Median	Maximum	Standard Deviation
06/07/2004-06/10/2004	Outflow	G335	141	28.42	27.51	28.38	29.73	0.56	141	1366.0	1355	1365	1380	5.6	141	7.93	7.62	7.97	8.08	0.11	141	5.50	4.96	5.47	6.27	0.29
08/23/2004-08/26/2004	Outflow	G335	151	28.89	27.49	28.81	30.30	0.77	151	1242.1	1223	1239	1270	11.1	151	7.58	7.51	7.57	7.66	0.05	151	4.89	2.69	4.92	7.12	1.27
08/23/2004-08/27/2004	Transect C	C.25	179	29.38	28.37	29.29	30.63	0.71	179	1232.6	1205	1230	1268	17.2	179	7.51	7.45	7.51	7.59	0.04	179	2.02	0.49	1.96	4.19	1.18
		C1	179	28.69	27.74	28.49	30.26	0.64	179	1223.4	1181	1209	1285	31.9	-----	-----	-----	-----	-----	-----	179	2.76	1.76	2.44	4.52	0.72
	Transect N	N.25	179	29.12	28.10	29.15	30.41	0.61	179	1226.1	1181	1224	1254	12.3	179	7.67	7.61	7.66	7.74	0.03	-----	-----	-----	-----	-----	-----
		N1	179	29.31	27.88	29.40	30.53	0.55	179	1230.9	1182	1232	1266	21.3	179	7.56	7.47	7.56	7.63	0.05	-----	-----	-----	-----	-----	-----
	Transect S	S4	179	29.94	27.75	29.86	33.13	1.31	179	1105.6	1051	1109	1151	22.6	-----	-----	-----	-----	-----	-----	179	4.27	1.95	4.19	7.32	1.51
12/17/2004-12/20/2004	Outflow	G335	139	18.51	17.76	18.55	19.21	0.41	139	1166.8	1153	1169	1176	5.6	139	7.87	7.76	7.86	7.99	0.06	139	7.27	6.17	7.38	7.80	0.39
10/19/2004-10/22/2004	Transect C	C.25	161	25.81	25.47	25.81	26.19	0.17	161	1223.7	1165	1239	1245	20.3	161	7.52	7.47	7.52	7.58	0.03	161	0.41	0.00	0.30	1.27	0.31
	Transect N	N.25	161	26.36	25.02	26.23	28.16	0.81	161	1187.5	1147	1188	1220	14.6	-----	-----	-----	-----	-----	-----	-----	-----	-----	-----	-----	
		N1	161	25.10	24.08	24.98	26.78	0.67	161	1177.5	1141	1185	1198	17.7	161	9.25	9.02	9.25	9.53	0.12	-----	-----	-----	-----	-----	
	Transect S	S4	161	26.85	25.58	26.71	28.41	0.74	161	1082.1	1058	1084	1101	11.5	161	7.78	7.58	7.79	7.99	0.13	-----	-----	-----	-----	-----	
03/14/2005-03/17/2005	Outflow	G335	143	22.77	20.14	22.88	23.72	0.83	143	1099.7	1078	1101	1126	13.6	143	7.62	7.55	7.61	7.73	0.04	143	5.77	4.26	5.75	6.96	0.61

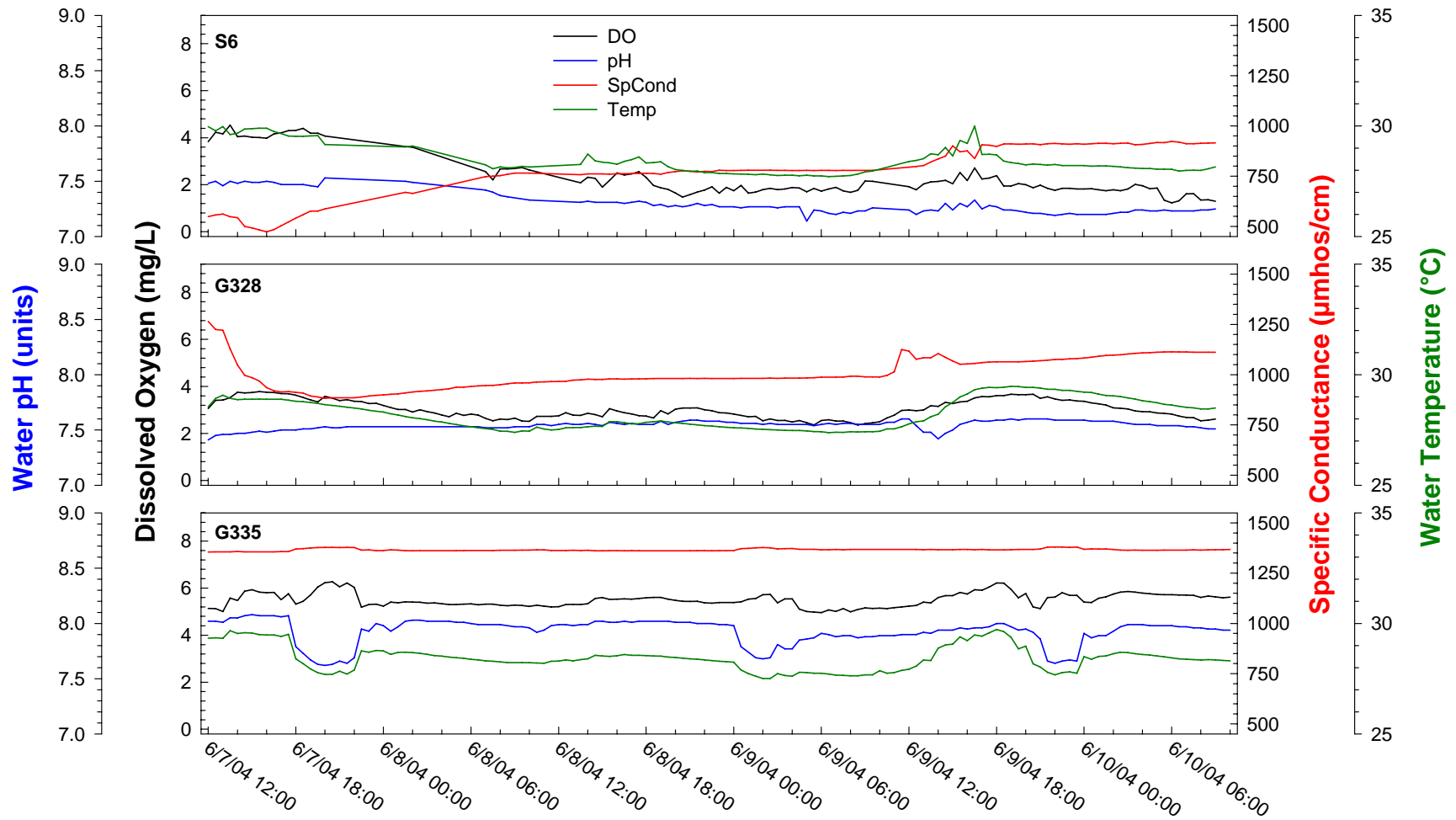
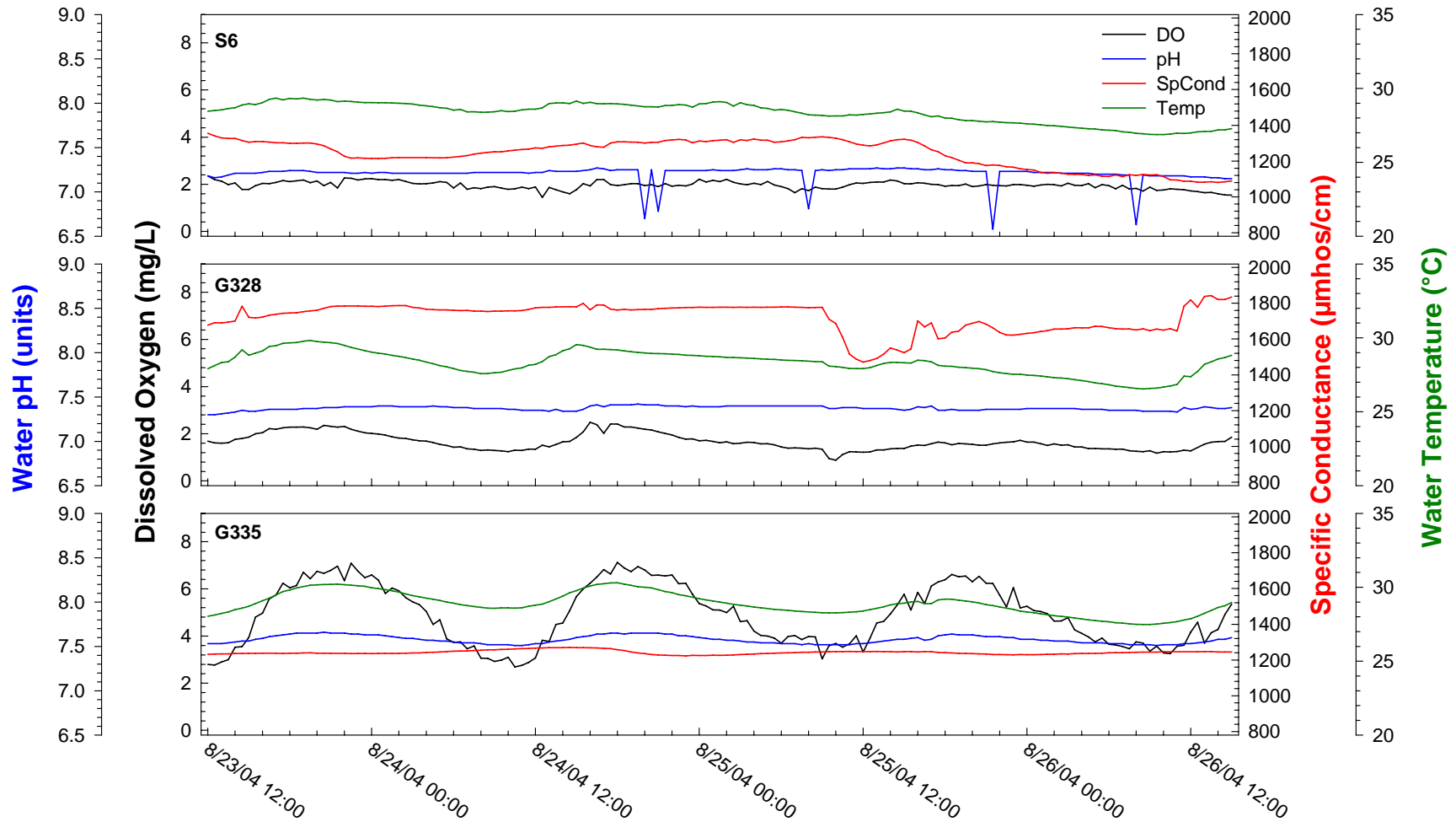
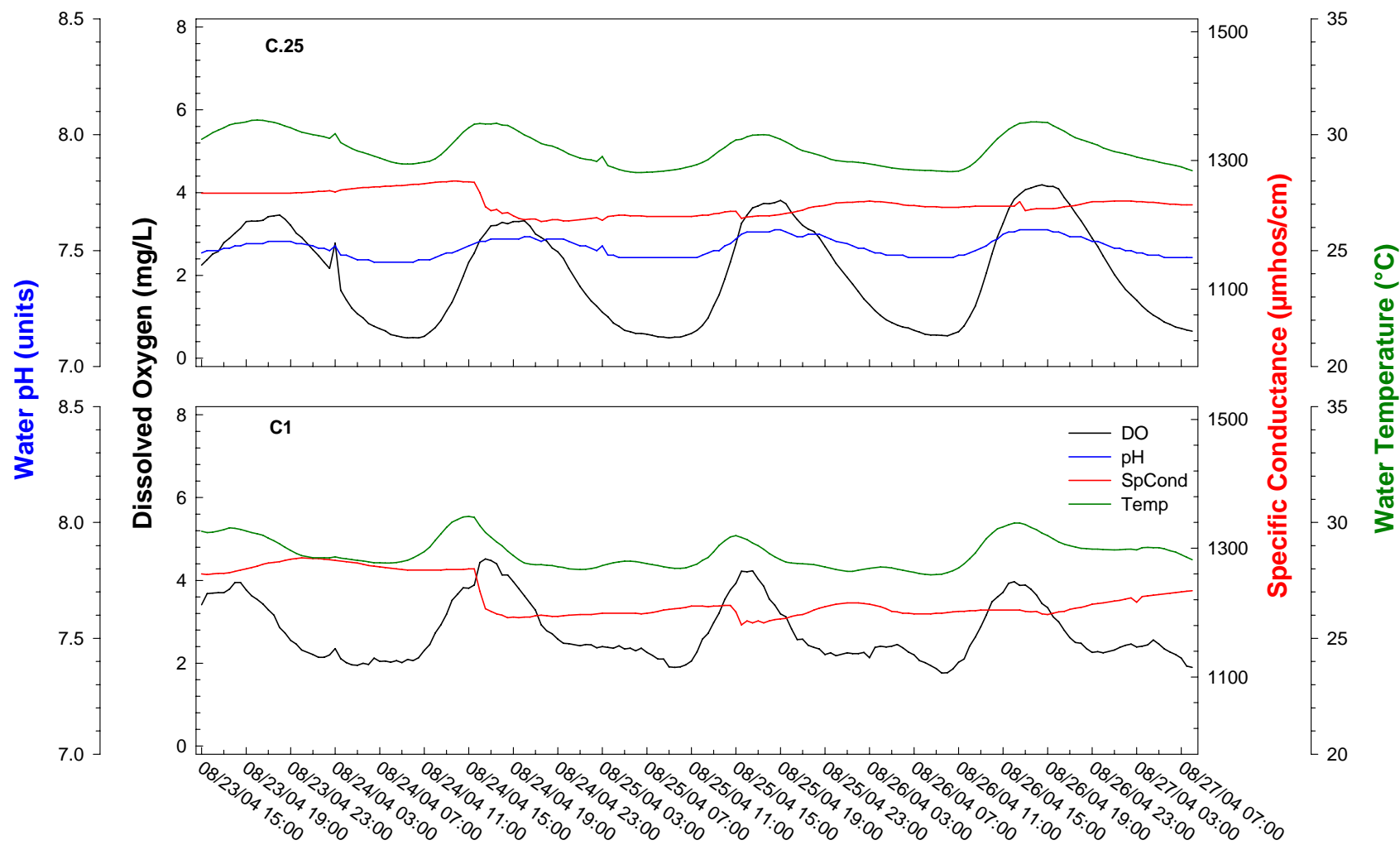


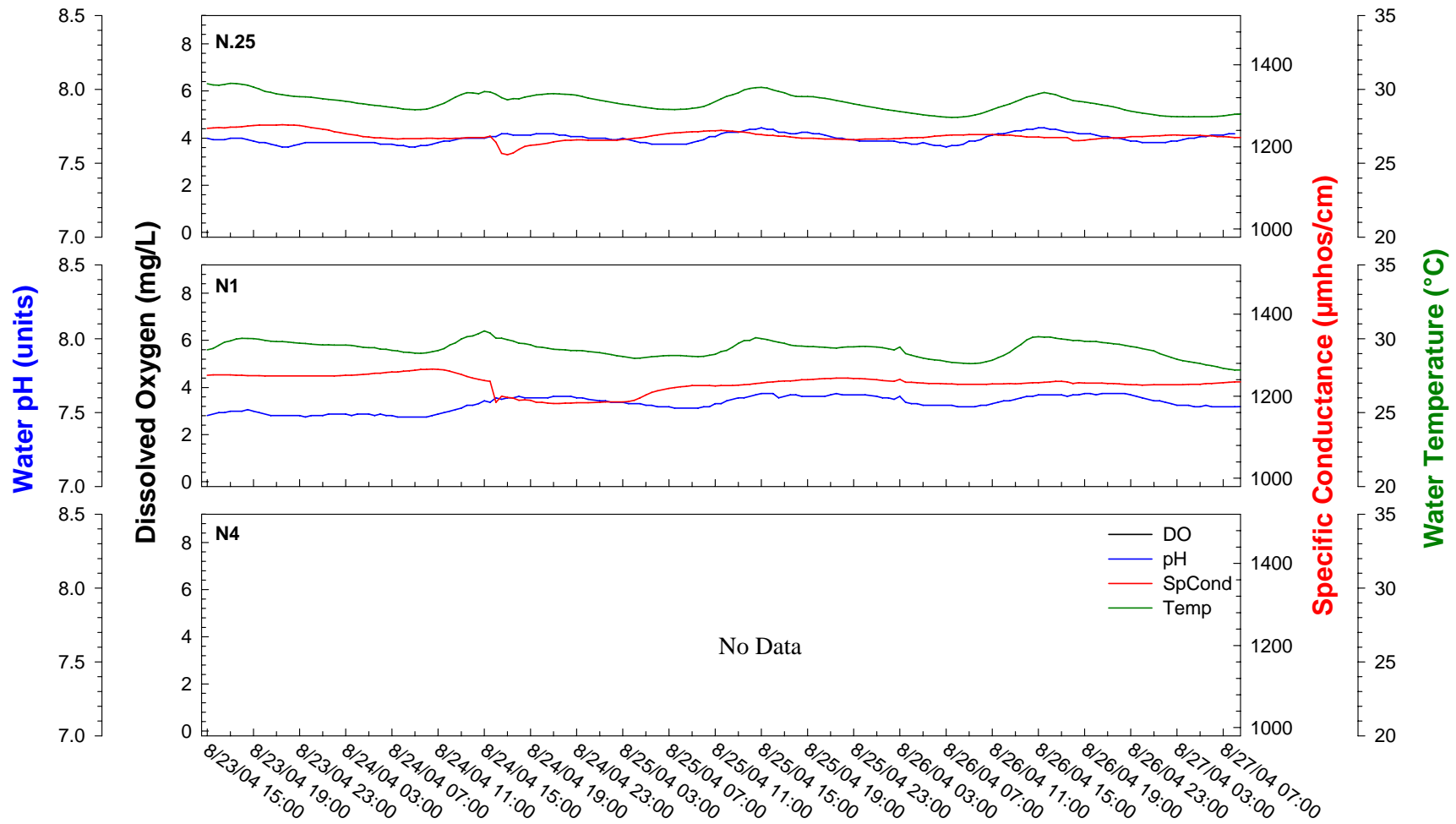
Figure 1. Diel measurements at STA-2 structures, June 7-10, 2004.



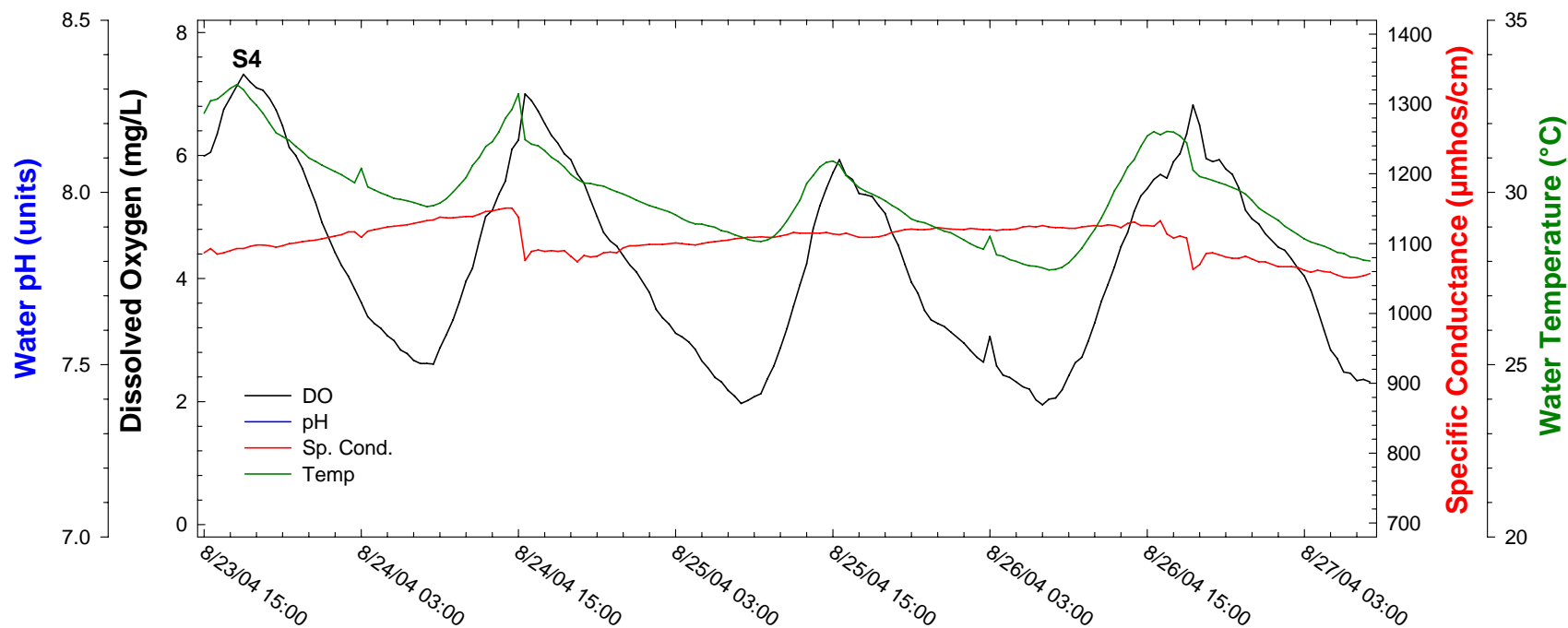
**Figure 2.** Diel measurements at STA-2 structures, August 23-27, 2004.



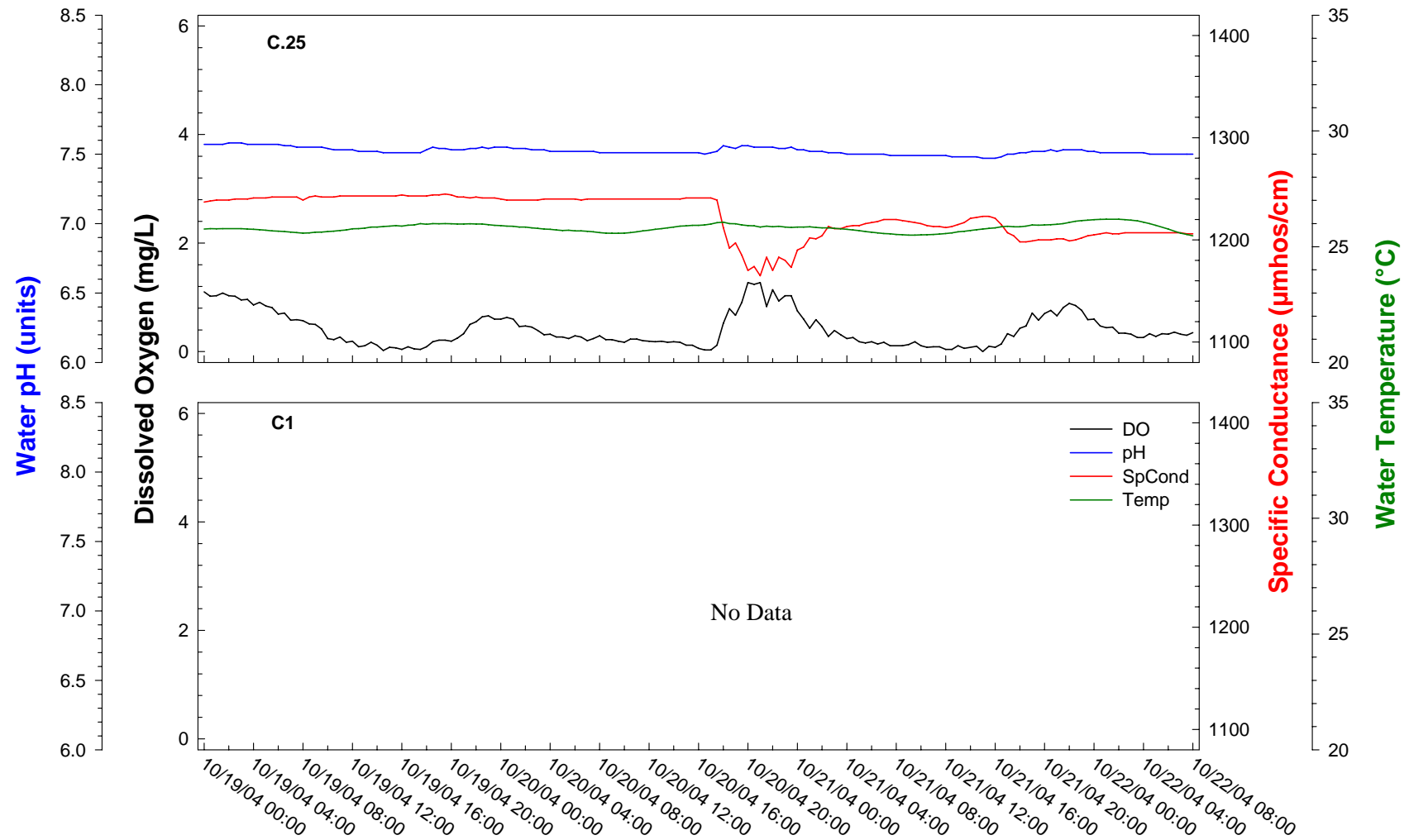
**Figure 3.** Diel measurements at Transect C marsh sites, August 23-27, 2004.



**Figure 4.** Diel measurements at Transect N marsh sites, August 23-27, 2004.



**Figure 5.** Diel measurements at Transect S marsh sites, August 23-27, 2004.



**Figure 6.** Diel measurements at Transect S marsh sites, October 19-22, 2004.



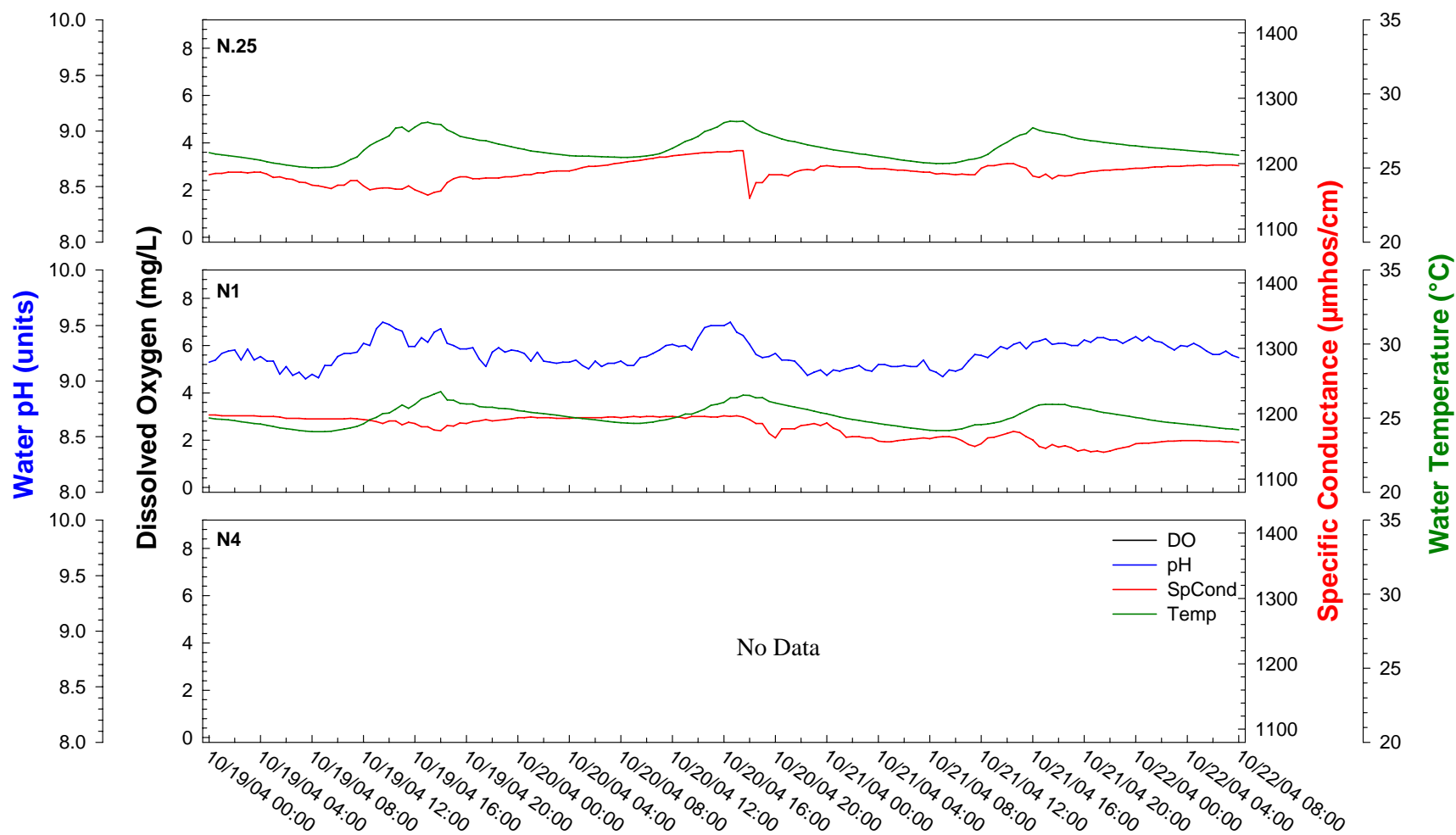
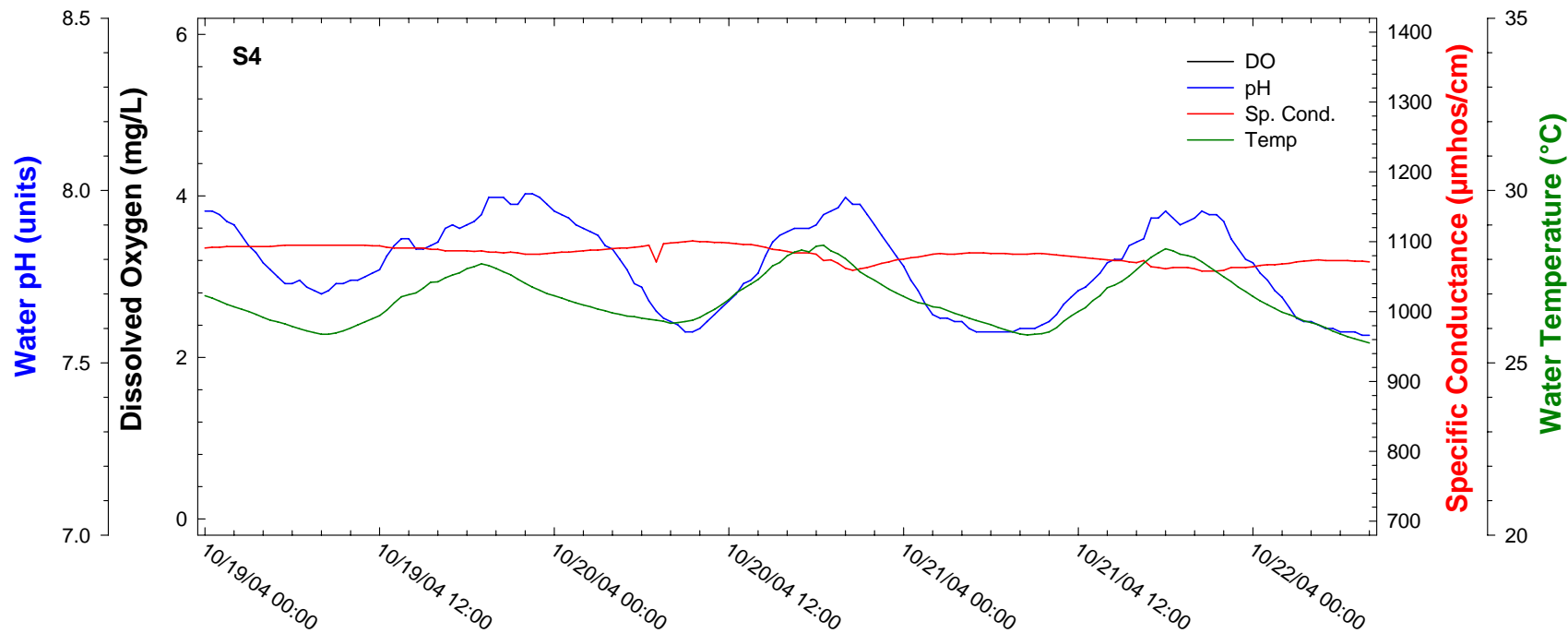
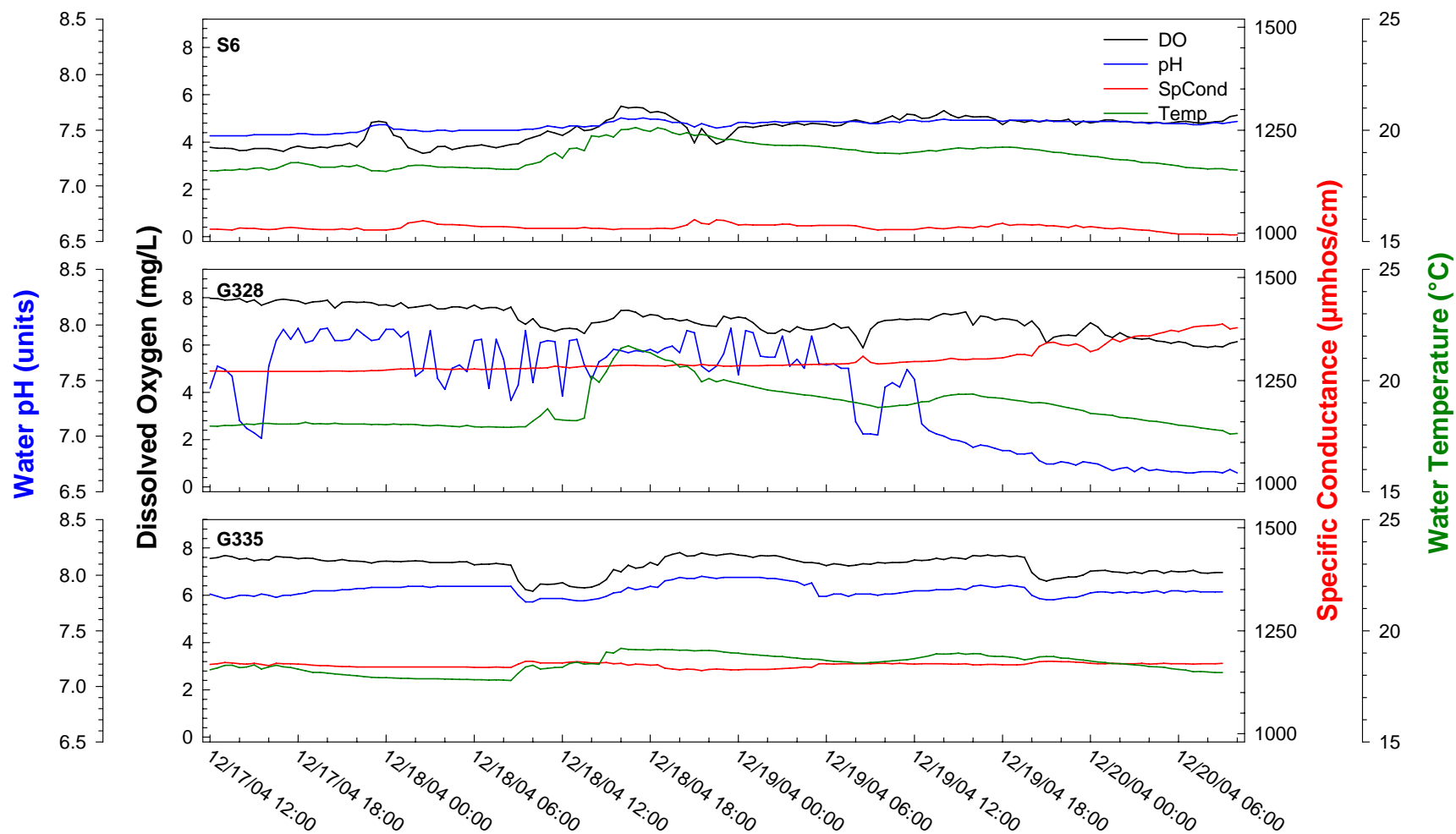


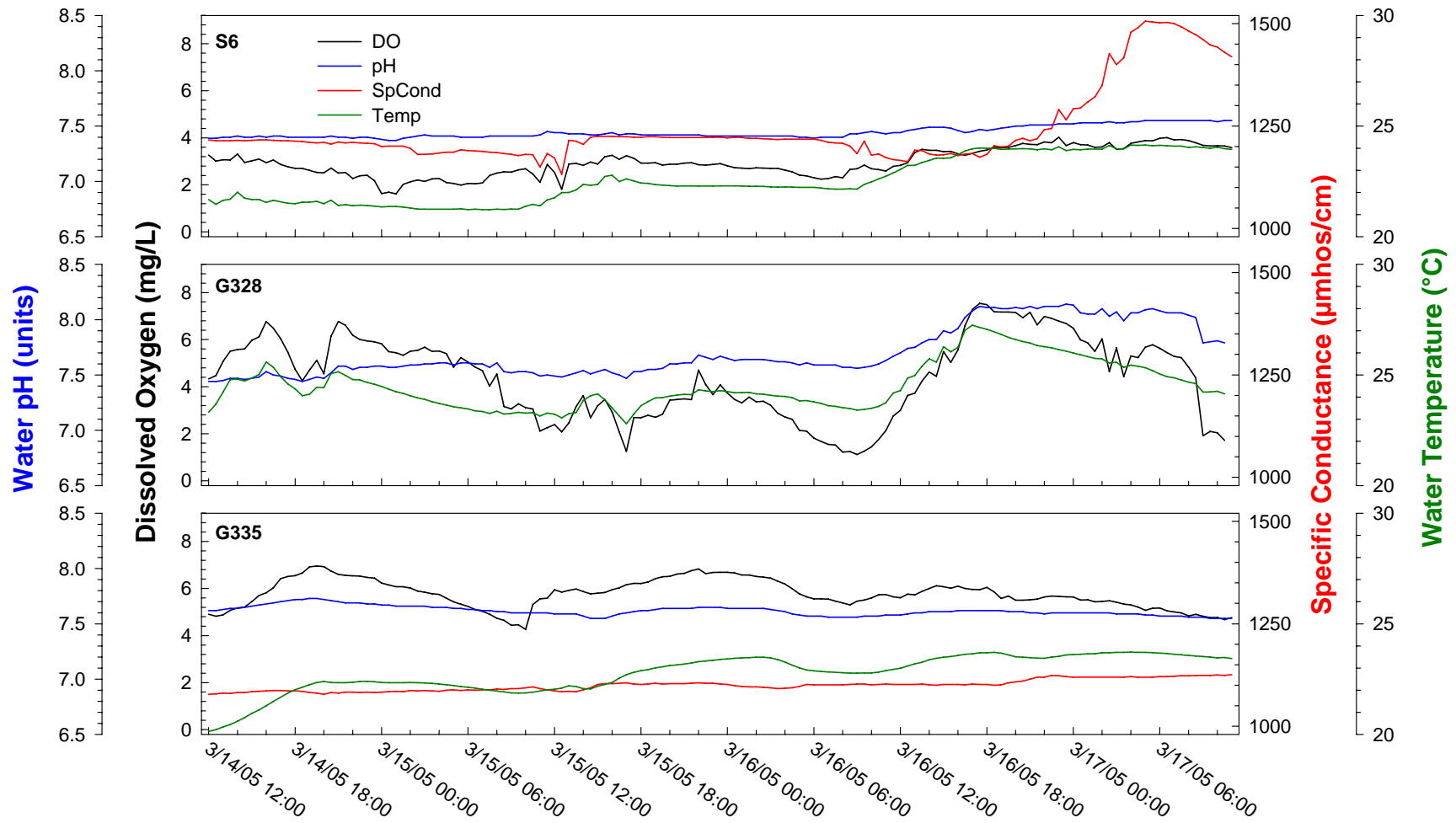
Figure 7. Diel measurements at Transect N marsh sites, October 19-22, 2004.



**Figure 8.** Diel measurements at Transect N marsh sites, October 19-22, 2004.



**Figure 9.** Diel measurements at STA-2 structures, December 17-20, 2004.



**Figure 10.** Diel measurements at STA-2 structures, March 14-17, 2005.