

# **Appendix 4-12: Water Year 2005 Diel Data for STA-5**

Nenad Iricanin

**Table 1.** Statistical summary of diel parameters at the outflow stations from STA-5, stations in the Miami Canal for each deployment period.

Period	Location	Station	Temperature (°C)					Specific Conductivity (µS/cm)					Water pH					Dissolved Oxygen (mg/L)								
			No. of Samples	Mean	Minimum	Median	Maximum	Standard Deviation	No. of Samples	Mean	Minimum	Median	Maximum	Standard Deviation	No. of Samples	Mean	Minimum	Median	Maximum	Standard Deviation	No. of Samples	Mean	Minimum	Median	Maximum	Standard Deviation
06/14/2004-06/17/2004	Outflow	STA5DC	140	28.45	27.08	28.27	30.79	0.74	140	608.3	491	618	675	38.0	140	7.84	7.64	7.83	8.12	0.11	140	4.49	1.60	4.66	7.60	1.29
		G344D	140	28.28	26.88	28.23	30.45	0.80	140	576.9	493	591	631	29.4	140	7.77	7.49	7.74	8.42	0.18	140	4.97	2.78	5.26	6.51	1.00
	Canal	NMC	139	29.61	28.85	29.61	30.38	0.41	139	815.3	779	813	970	23.3	139	7.31	6.53	7.32	7.38	0.08	139	4.59	3.51	4.75	5.69	0.58
		SMC	139	29.22	28.25	29.18	30.11	0.49	139	879.4	764	856	999	62.1	139	7.28	7.23	7.27	7.36	0.03	139	4.09	3.10	3.94	5.15	0.53
08/16/2004-08/20/2004	Transect N	N.25	181	28.33	26.72	28.16	30.35	0.99	181	520.5	482	532	553	21.0	181	7.22	7.18	7.21	7.29	0.02	181	0.71	0.21	0.52	2.47	0.43
		N1	181	29.66	26.49	29.14	34.57	2.30	181	541.7	503	559	578	26.9	181	7.31	7.25	7.30	7.57	0.05	181	1.90	0.64	1.63	5.00	0.97
09/20/2004-09/23/2004	Outflow	STA5DC	145	25.74	24.44	25.68	27.08	0.71	145	430.7	416	431	443	6.7	144	7.28	7.20	7.27	7.40	0.05	145	0.83	0.09	0.58	2.53	0.72
		G344D	143	26.36	25.24	26.30	27.56	0.58	143	484.2	478	484	489	2.3	143	7.11	7.08	7.11	7.15	0.01	143	0.53	0.20	0.42	1.24	0.29
	Canal	NMC	286	28.18	27.04	28.12	29.73	0.88	286	931.3	610	891	1171	158.0	286	7.38	7.22	7.38	7.52	0.07	286	3.27	2.77	3.14	4.03	0.38
		SMC	145	27.79	26.29	27.68	29.55	0.82	145	829.9	573	835	1114	129.7	145	7.41	7.28	7.42	7.53	0.06	145	2.70	1.63	2.69	3.78	0.47
10/25/2004-10/29/2004	Transect S	S4	177	21.72	20.57	21.58	23.64	0.73	177	496.2	470	501	511	11.8	177	6.98	6.92	6.98	7.04	0.02	177	1.71	1.18	1.63	2.81	0.29
		N.25	177	22.94	21.64	22.94	24.40	0.68	-----	-----	-----	-----	-----	-----	177	7.24	7.20	7.23	7.33	0.03	-----	-----	-----	-----	-----	-----
		N1	177	23.86	21.31	23.68	27.30	1.64	177	569.4	551	571	584	8.7	177	7.09	7.03	7.07	7.20	0.05	177	1.96	0.88	1.87	3.68	0.76
12/06/2004-12/08/2004	Outflow	STA5DC	240	22.42	21.56	22.32	24.59	0.66	240	773.5	739	767	841	23.7	240	7.43	7.29	7.43	7.57	0.08	240	2.94	1.61	2.79	4.80	0.86
		G344D	137	21.29	20.36	21.14	22.81	0.74	137	747.6	728	744	778	13.7	137	6.84	6.17	6.84	7.39	0.33	137	0.55	0.12	0.51	1.37	0.34
	Canal	NMC	135	21.78	21.45	21.67	22.49	0.26	135	504.0	461	480	663	57.3	135	7.74	7.57	7.76	7.92	0.08	135	6.34	3.91	6.45	7.45	0.75
		SMC	136	21.95	21.49	21.89	23.06	0.32	136	525.7	463	491	706	70.4	136	7.68	7.42	7.68	7.91	0.11	136	5.87	2.02	6.18	7.30	1.09
03/14/2005-03/17/2005	Outflow	STA5DC	139	22.23	20.24	22.10	24.41	1.00	139	830.0	806	824	871	18.6	139	7.81	7.59	7.84	7.97	0.12	139	6.45	4.49	6.73	8.21	1.10
		G344D	132	20.37	17.54	20.88	22.54	1.57	132	630.5	589	616	720	42.9	132	7.20	7.13	7.18	7.29	0.04	132	2.71	1.11	2.59	5.36	1.23
	Canal	NMC	139	22.22	20.51	22.15	23.74	0.88	139	960.6	893	961	1040	29.9	139	7.46	7.40	7.43	7.60	0.06	139	4.71	3.88	4.62	5.82	0.50
		SMC	138	22.63	20.93	22.72	23.66	0.61	138	952.1	908	957	1005	21.6	136	7.39	7.06	7.42	7.50	0.09	138	5.46	4.22	5.43	6.95	0.74

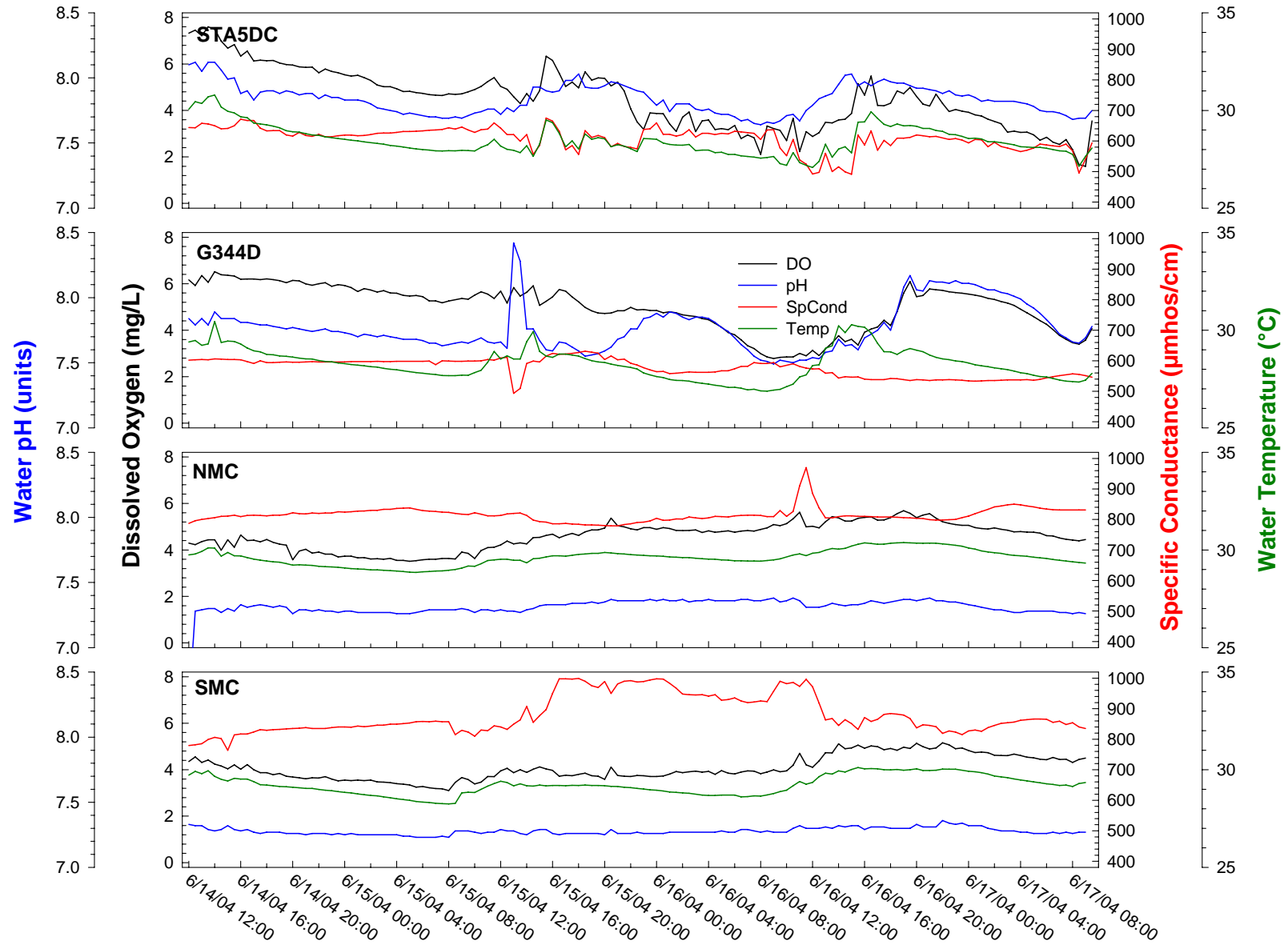


Figure 1. Diel measurements at outflows from STA-5 and reference stations in the Miami Canal, June 7-10, 2004.

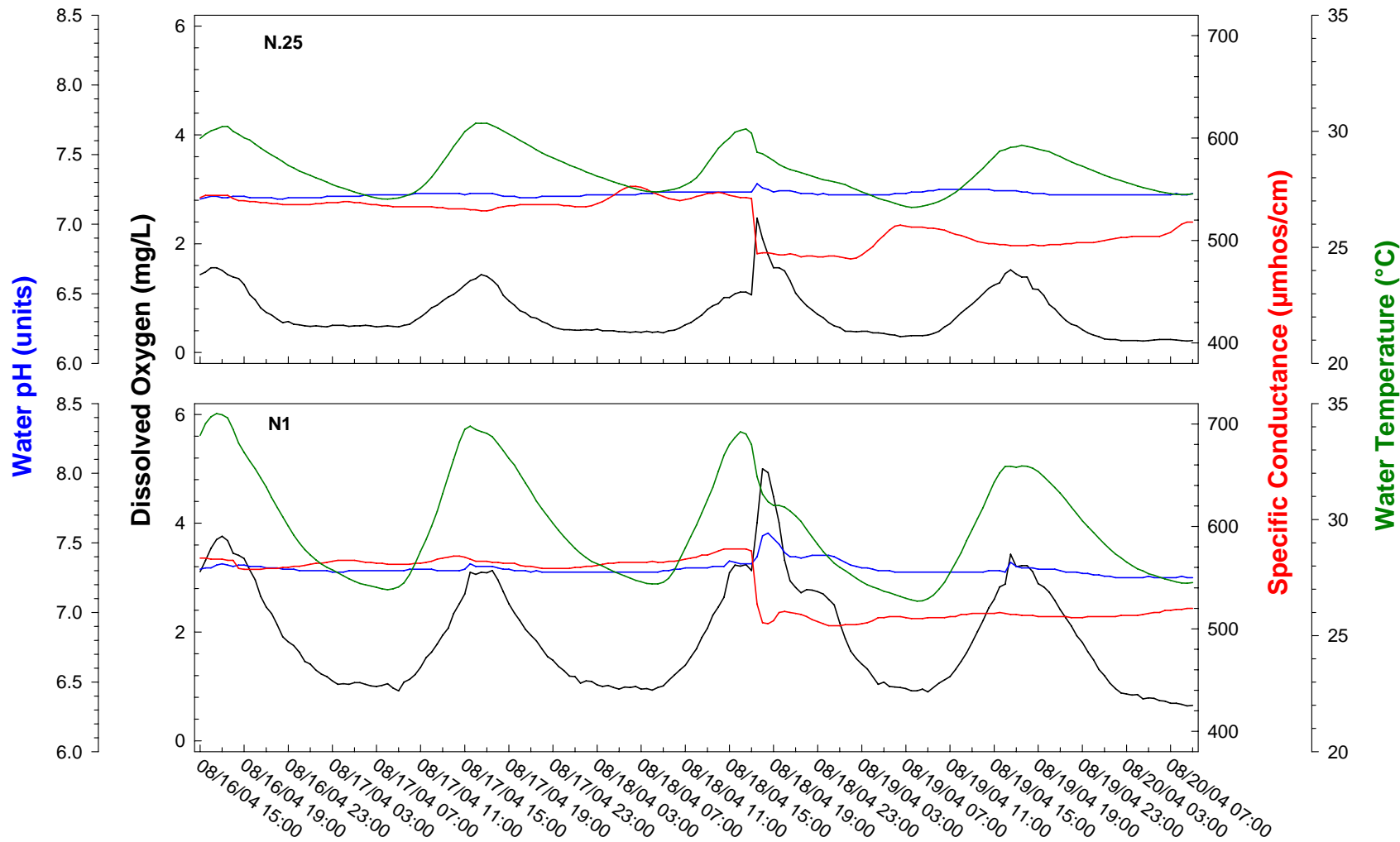


Figure 2. Diel measurements at marsh Transect N locations in the Rotenberger tract, August 16-20, 2004.

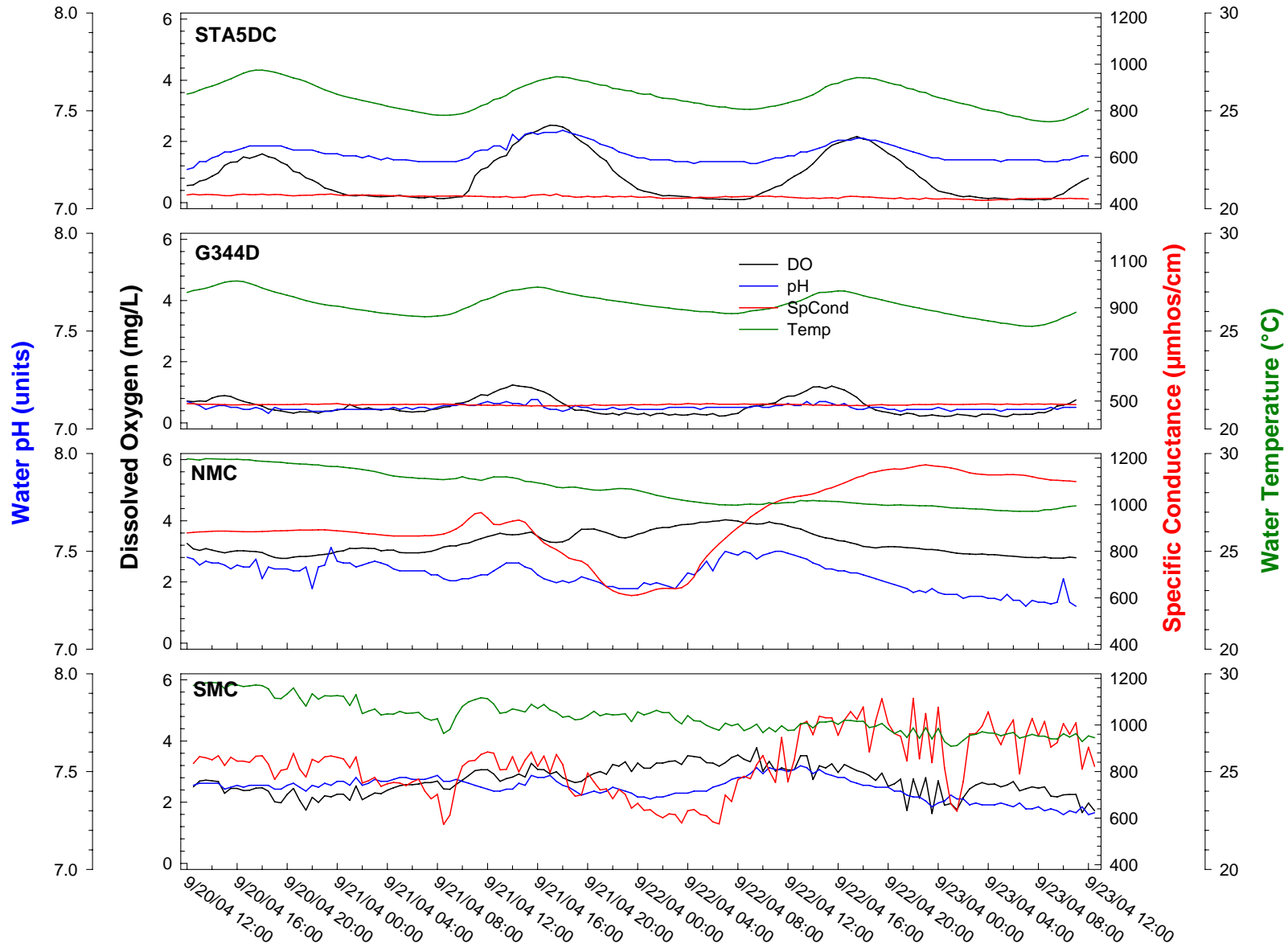


Figure 3. Diel measurements at outflows from STA-5 and reference stations in the Miami Canal, September 20-23, 2004.

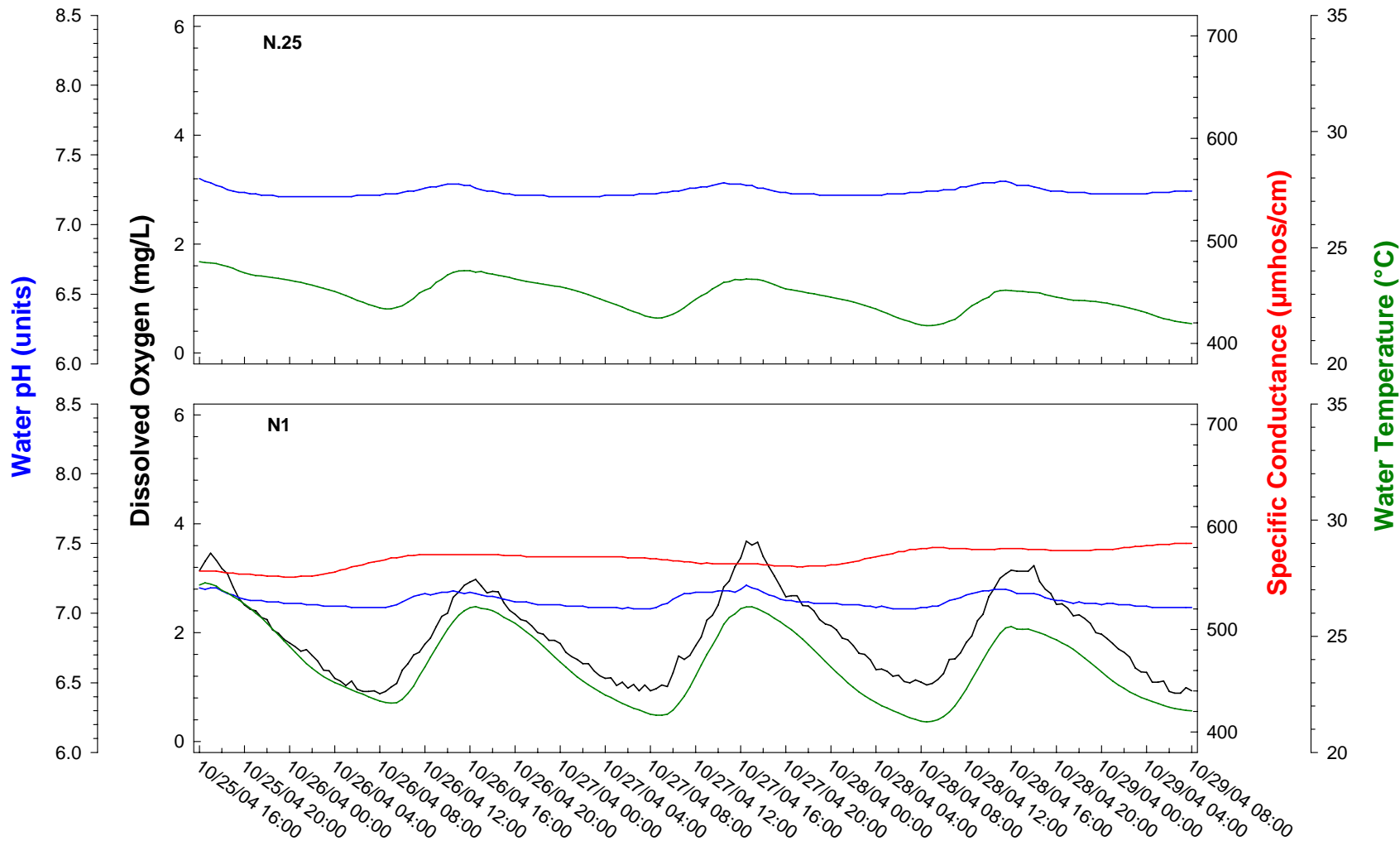


Figure 4. Diel measurements at marsh Transect N locations in the Rotenberger tract, October 25-29, 2004.

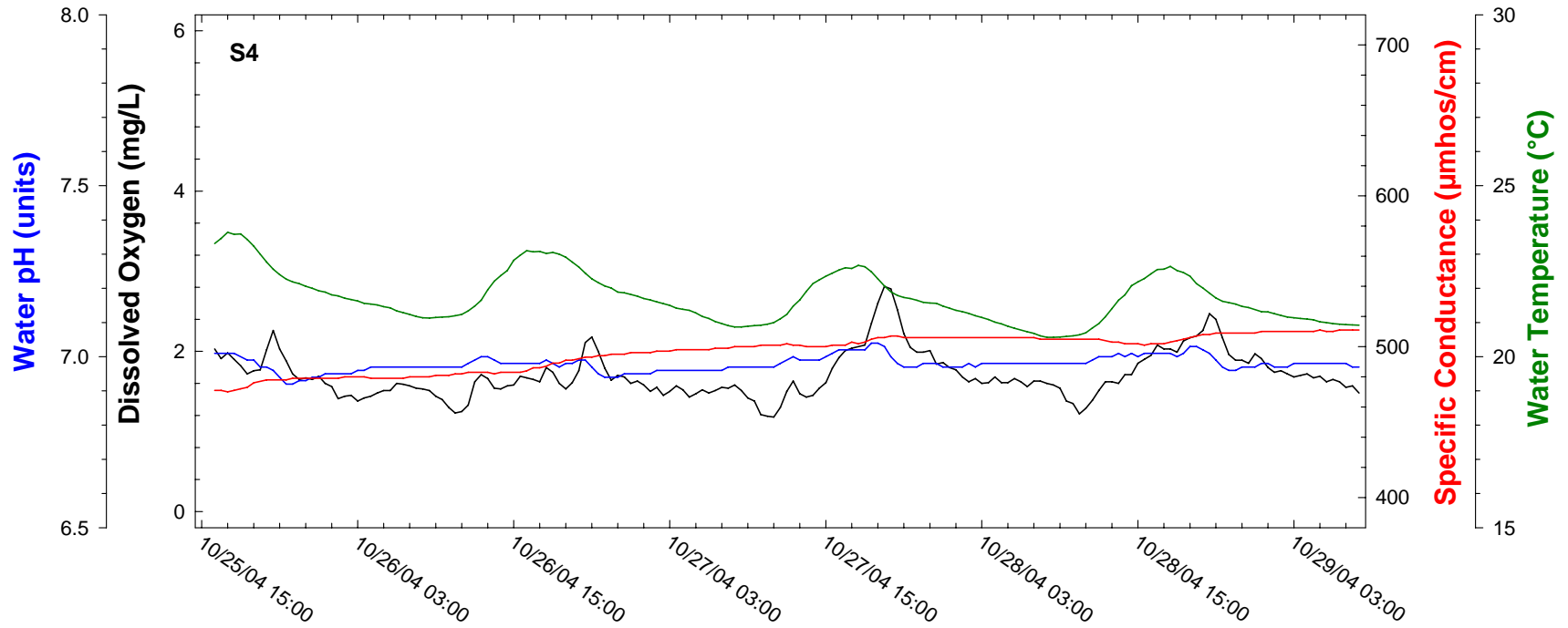


Figure 5. Diel measurements at marsh Transect S locations in the Rotenberger tract, October 25-29, 2004.

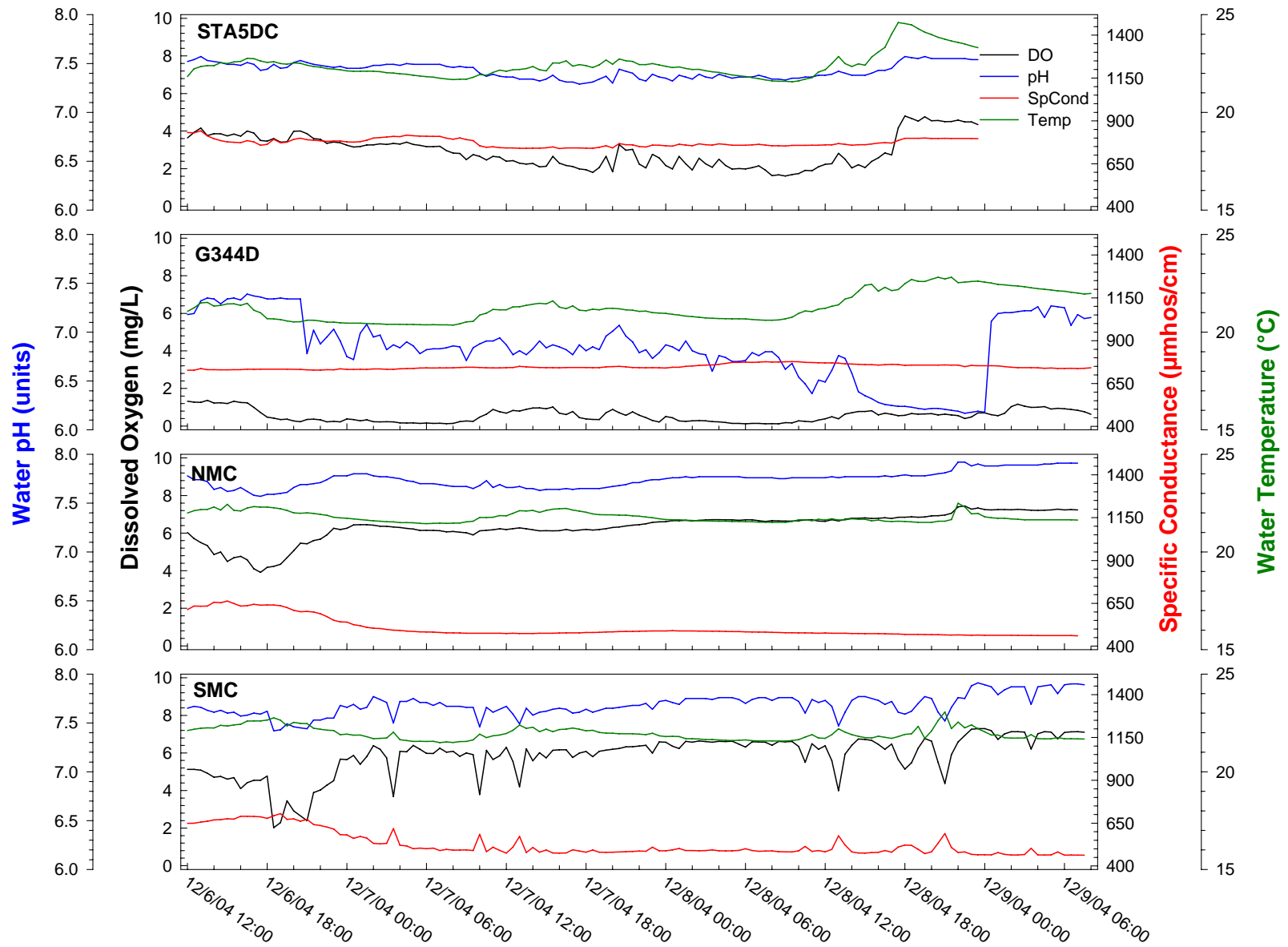


Figure 6. Diel measurements at outflows from STA-5 and reference stations in the Miami Canal, December 6-9, 2004.



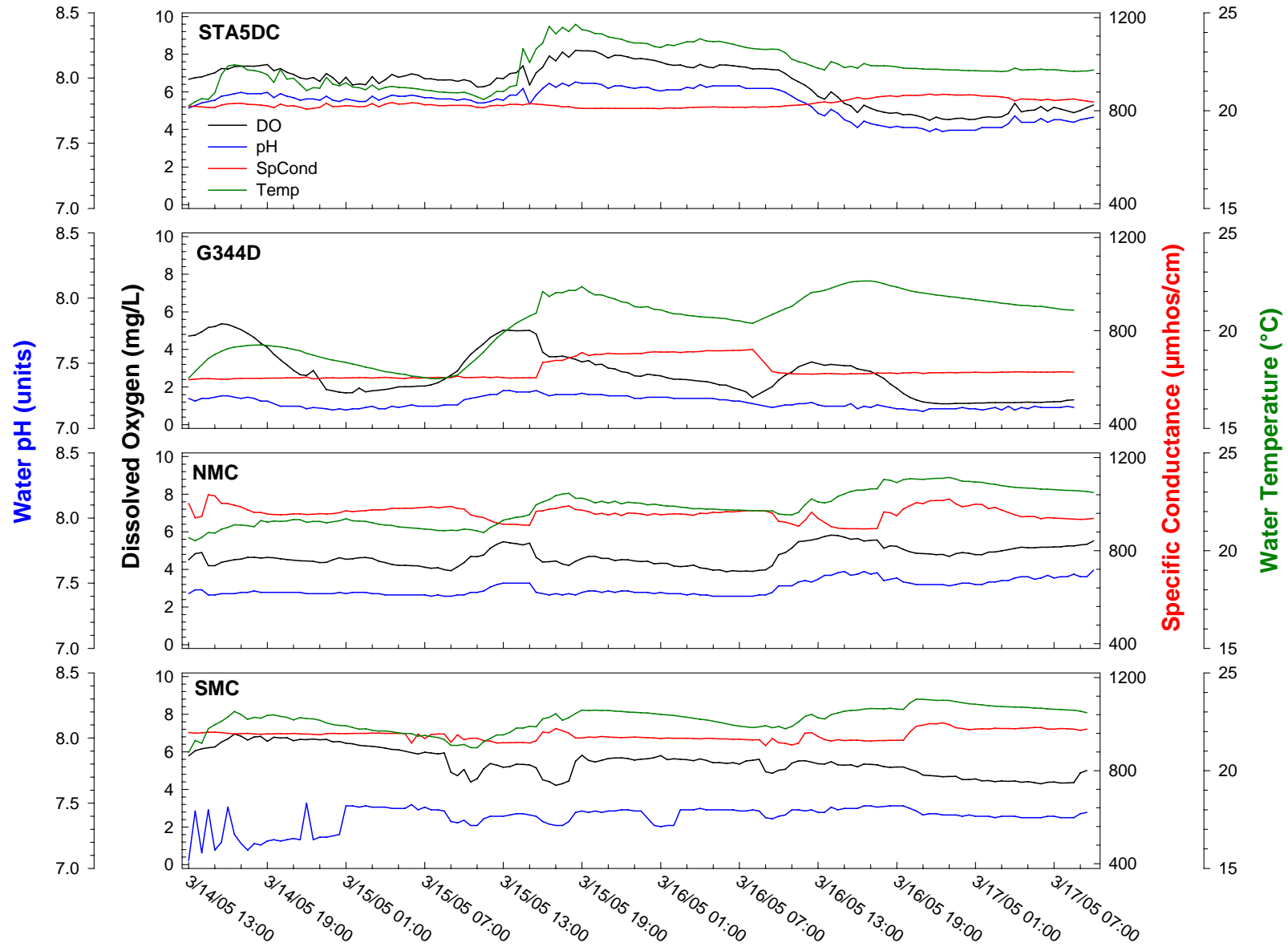


Figure 7. Diel measurements at outflows from STA-5 and reference stations in the Miami Canal, March 14-17, 2005.