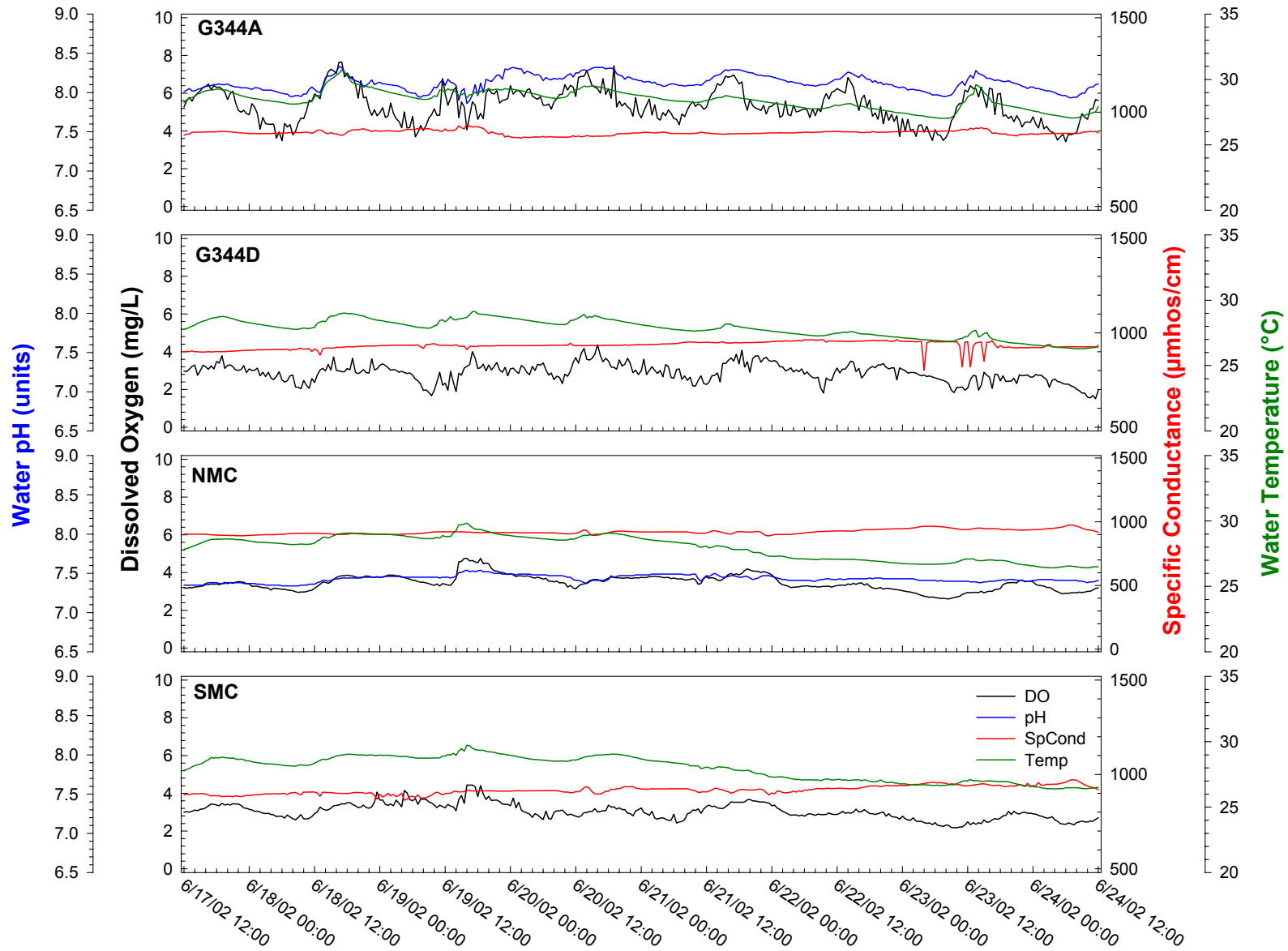


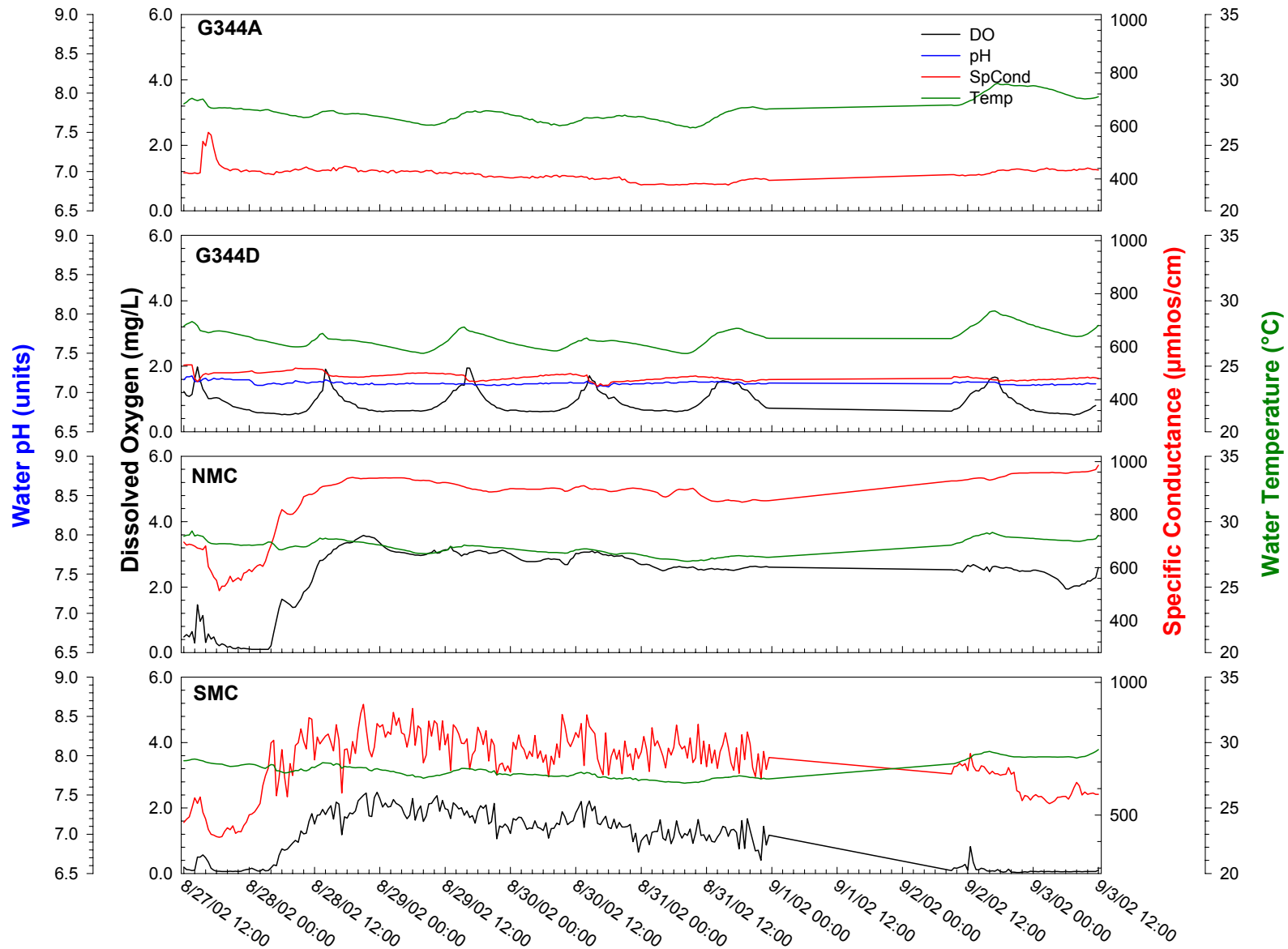
# **Appendix 4A-9: STA-5 Dissolved Oxygen Data**

**Table 1.** Statistical summary of diel parameters at the outflow stations from STA-5 stations in the Miami Canal for each deployment period.

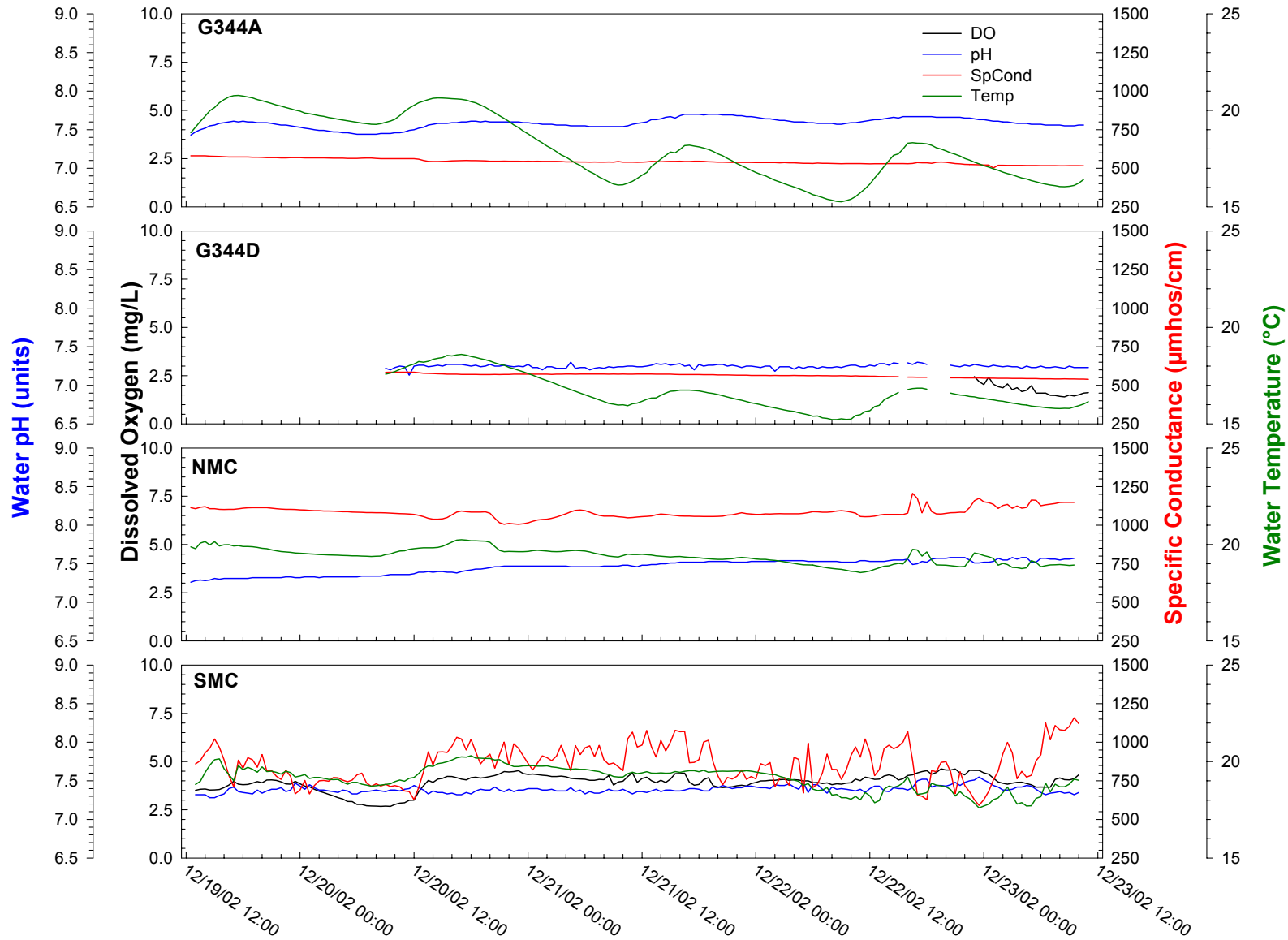
Period	Location	Station	Temperature (°C)					Specific Conductivity (µmhos/cm)					Water pH					Dissolved Oxygen (mg/L)								
			No. of Samples	Mean	Minimum	Median	Maximum	Standard Deviation	No. of Samples	Mean	Minimum	Median	Maximum	Standard Deviation	No. of Samples	Mean	Minimum	Median	Maximum	Standard Deviation	No. of Samples	Mean	Minimum	Median	Maximum	Standard Deviation
06/17/2002 - 06/24/2002	Outflow	G344A	337	28.5	27.0	28.5	30.7	0.7	337	891.2	861	891	938	12.1	337	8.12	7.86	8.11	8.33	0.10	337	5.32	3.44	5.27	7.65	0.89
		G344D	337	27.8	26.3	27.9	29.1	0.7	337	933.5	802	934	964	20.7	---	---	---	---	---	---	337	2.88	1.51	2.92	4.37	0.49
	Miami Canal	NMC	337	28.0	26.4	28.3	29.8	0.9	337	920.7	890	917	976	18.9	337	7.43	7.34	7.43	7.54	0.04	337	3.46	2.60	3.43	4.75	0.41
		SMC	337	28.0	26.4	28.2	29.7	0.9	337	917.1	863	914	972	21.3	---	---	---	---	---	---	337	3.04	2.17	3.00	4.44	0.42
08/27/2002 - 09/03/2002	Outflow	G344A	337	27.7	26.3	27.5	29.7	0.9	337	415.4	377	415	576	24.8	336	7.12	7.07	7.11	7.21	0.02	---	---	---	---	---	---
		G344D	337	27.2	26.0	27.1	29.2	0.7	337	485.9	451	484	532	13.4	189	7.59	7.43	7.59	7.70	0.07	336	0.88	0.51	0.73	1.98	0.33
	Miami Canal	NMC	337	28.0	27.0	28.1	29.3	0.5	337	871.4	513	896	986	95.7	187	7.46	7.26	7.48	7.58	0.09	337	2.43	0.10	2.61	3.58	0.81
		SMC	337	27.9	26.9	27.9	29.5	0.6	337	702.4	416	721	917	104.1	187	7.39	7.28	7.38	7.55	0.05	337	1.04	0.03	1.14	2.48	0.71
12/19/2002 - 12/23/2002	Outflow	G344A	189	18.1	15.3	17.9	20.8	1.7	189	543.5	501	541	580	17.3	---	---	---	---	---	---	---	---	---	---	---	---
	Miami Canal	NMC	187	19.4	18.5	19.4	20.2	0.4	187	1,083.3	1,006	1,080	1,206	33.3	---	---	---	---	---	---	---	---	---	---	---	
		SMC	187	19.1	17.6	19.2	20.3	0.6	187	859.7	591	863	1,158	121.0	---	---	---	---	---	---	187	3.92	2.67	4.02	4.62	0.44
12/20/2002 - 12/23/2002	Outflow	G344D	145	16.6	15.2	16.4	18.6	0.9	145	563.3	539	567	585	12.1	145	7.25	7.13	7.25	7.30	0.02	23	1.72	1.40	1.62	2.42	0.26
03/24/2003 - 03/27/2003	Outflow	G344A	141	24.0	23.1	24.0	25.1	0.5	141	1,182.0	1,123	1,187	1,236	31.6	141	7.48	7.36	7.48	7.56	0.04	141	3.77	2.76	3.70	5.09	0.59
		G344D	141	23.9	22.3	23.9	25.9	0.9	141	1,030.6	957	1,037	1,094	43.8	141	7.42	7.26	7.44	7.58	0.08	141	2.53	0.29	2.50	5.20	1.24
	Miami Canal	NMC	140	25.5	24.8	25.6	26.2	0.4	140	986.4	937	980	1,048	36.6	140	7.68	7.45	7.69	7.97	0.11	140	6.87	5.81	6.69	9.64	0.86



**Figure 1.** Diel measurements at outflows from STA-5 and reference stations in the Miami Canal, June 16-24, 2002.



**Figure 2.** Diel measurements at outflows from STA-5 and reference stations in the Miami Canal, August 27 – September 3, 2002.



**Figure 3.** Diel measurements at outflows from STA-5 and reference stations in the Miami Canal, December 19-23, 2002.

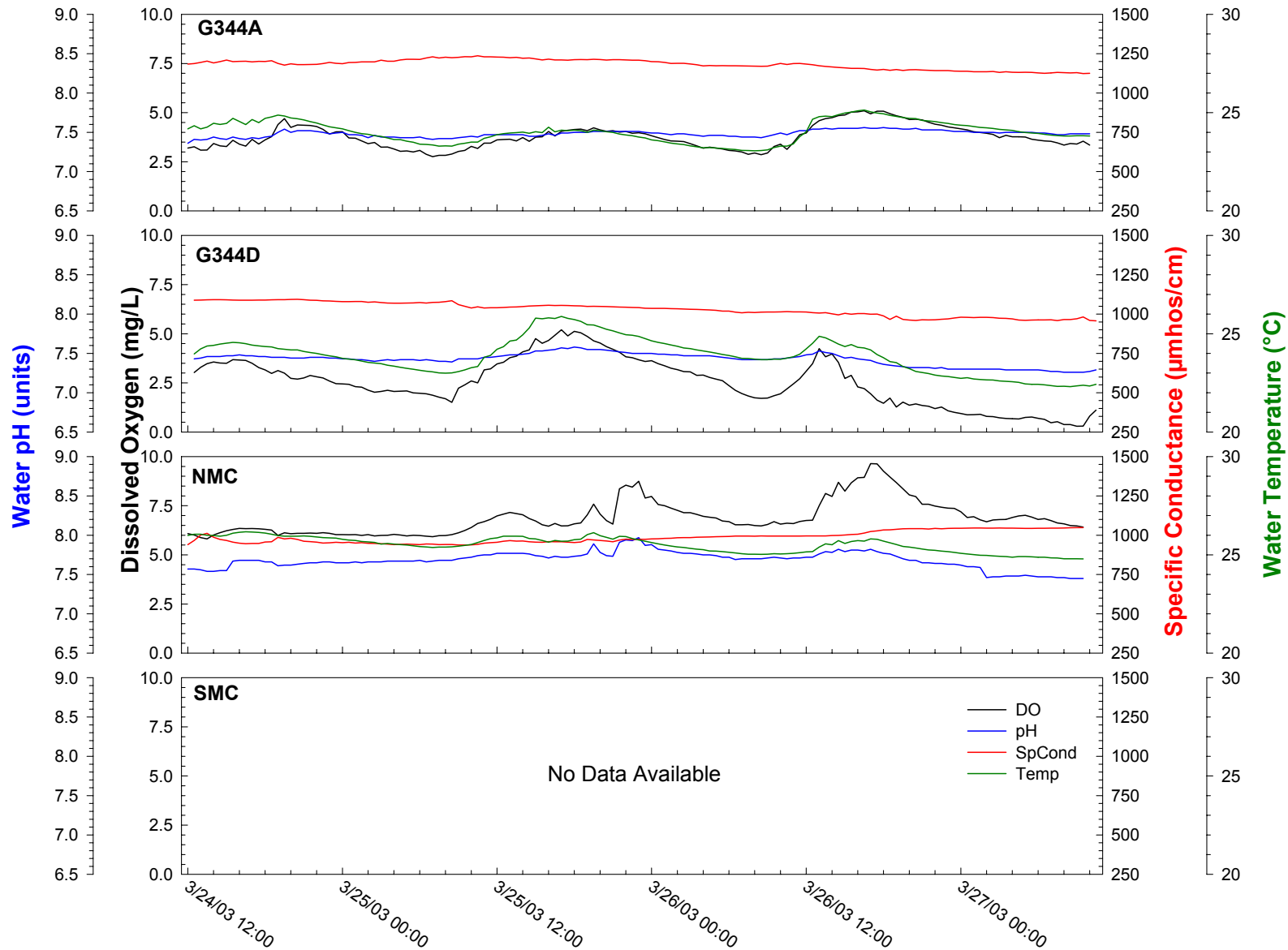


Figure 3. Diel measurements at outflows from STA-5 and reference stations in the Miami Canal, March 24-27, 2003.