

Appendix 4A-6: STA-2 Dissolved Oxygen Data

Table 1. Statistical summary of diel parameters at the outflow stations from STA-2 and marsh stations in WCA-2 for each deployment period.

Period	Location	Station	Temperature (°C)					Specific Conductivity (µmhos/cm)					Water pH					Dissolved Oxygen (mg/L)								
			No. of Samples	Mean	Minimum	Median	Maximum	Standard Deviation	No. of Samples	Mean	Minimum	Median	Maximum	Standard Deviation	No. of Samples	Mean	Minimum	Median	Maximum	Standard Deviation	No. of Samples	Mean	Minimum	Median	Maximum	Standard Deviation
08/20/2002 - 08/23/2002	Transect C	C.25	129	28.3	26.2	28.3	29.9	1.0	129	1024.2	955	1,044	1,091	36.7	129	7.55	7.48	7.54	7.75	0.04	129	1.54	0.50	1.42	3.27	0.81
		C1	131	28.2	24.7	27.8	33.9	2.3	131	770.7	732	775	792	16.5	131	7.60	7.31	7.51	8.15	0.25	131	4.44	0.72	3.51	10.11	3.16
	Transect N	N.25	130	28.4	25.6	28.4	30.9	1.3	130	1074.1	1,036	1,079	1,096	15.6	130	7.56	7.26	7.54	7.90	0.18	130	1.70	0.22	1.51	4.43	1.24
		N1	---	---	---	---	---	---	---	---	---	---	---	---	---	---	---	---	---	---	---	---	---	---	---	---
	Transect S	S4	---	---	---	---	---	---	---	---	---	---	---	---	---	---	---	---	---	---	---	---	---	---	---	---
09/12/2002 - 09/19/2002	Inflow	S6	337	28.7	27.8	28.6	30.4	0.4	337	1253.8	1,182	1,228	1,390	58.1	337	7.45	7.31	7.45	7.53	0.04	337	2.11	1.20	2.00	4.14	0.52
		G328	337	29.5	27.1	29.6	31.7	1.2	337	1428.3	1,326	1,427	1,512	40.9	337	7.56	7.21	7.61	7.82	0.18	337	2.29	0.37	2.29	4.82	0.95
	Outflow	G335	332	29.1	27.2	29.3	30.6	0.8	332	1260.5	1,188	1,264	1,289	23.3	332	7.60	7.45	7.58	7.73	0.06	332	2.88	1.65	2.85	4.60	0.67
12/02/2002 - 12/09/2002	Inflow	S6	329	22.1	20.8	22.1	23.6	0.7	329	1057.7	990	1,040	1,151	48.5	329	7.87	7.75	7.87	7.99	0.06	179	3.46	1.97	3.50	5.12	0.75
		G328	329	21.5	19.9	21.4	22.9	0.7	329	1321.5	1,174	1,359	1,375	61.6	330	7.61	7.44	7.61	7.73	0.07	179	4.98	2.06	4.89	7.66	1.61
	Outflow	G335	330	20.9	19.7	21.0	22.1	0.5	330	1181.5	1,154	1,182	1,208	10.2	179	7.49	7.40	7.49	7.60	0.05	179	4.86	1.39	4.66	10.59	1.90
02/24/2003 - 02/28/2003	Transect C	C.25	179	23.6	21.5	23.5	26.2	1.2	179	789.4	773	785	812	10.4	179	7.55	7.35	7.53	7.77	0.12	179	4.63	2.24	4.54	7.24	1.36
		C1	179	24.6	21.3	24.6	28.8	2.0	179	804.3	762	807	834	17.3	179	7.63	7.35	7.55	8.66	0.24	179	5.50	2.01	5.01	10.45	2.44
	Transect N	N.25	179	23.3	21.4	23.2	26.7	1.1	179	776.1	754	779	798	11.3	179	7.54	7.12	7.51	8.10	0.26	139	3.49	1.19	3.97	5.35	1.31
		N1	179	24.0	21.6	23.8	26.4	1.3	179	783.4	334	836	907	138.8	179	7.82	7.56	7.78	8.17	0.18	138	4.44	2.80	4.42	6.01	0.76
	Transect S	S4	179	24.7	20.1	24.5	29.5	2.4	179	1067.9	1,006	1,071	1,098	23.5	138	7.44	7.39	7.43	7.57	0.05	---	---	---	---	---	---
03/17/2003 - 03/20/2003	Inflow	S6	138	25.7	24.9	25.8	26.2	0.3	138	1119.8	860	1,180	1,289	135.5	139	7.38	7.20	7.42	7.56	0.11	---	---	---	---	---	---
		G328	139	26.3	24.8	26.4	27.5	0.7	139	1760.4	1,614	1,774	1,945	73.6	138	7.47	7.28	7.47	7.62	0.07	---	---	---	---	---	---
	Outflow	G335	138	26.2	24.4	26.1	27.3	0.7	138	864.7	749	864	1,000	67.2	---	---	---	---	---	---	---	---	---	---	---	

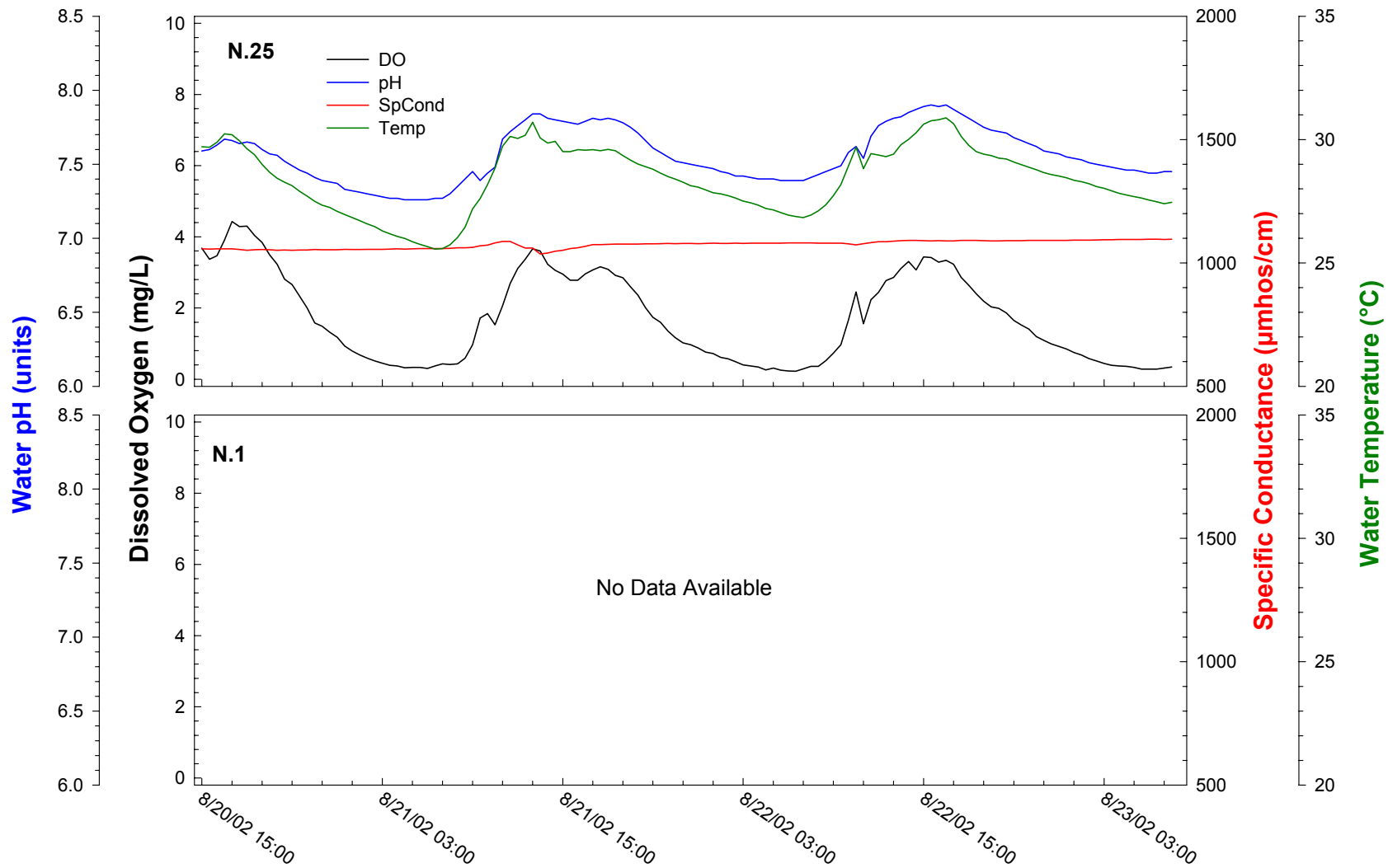


Figure 1. Diel measurements at Transect N marsh sites, August 20-23, 2002.

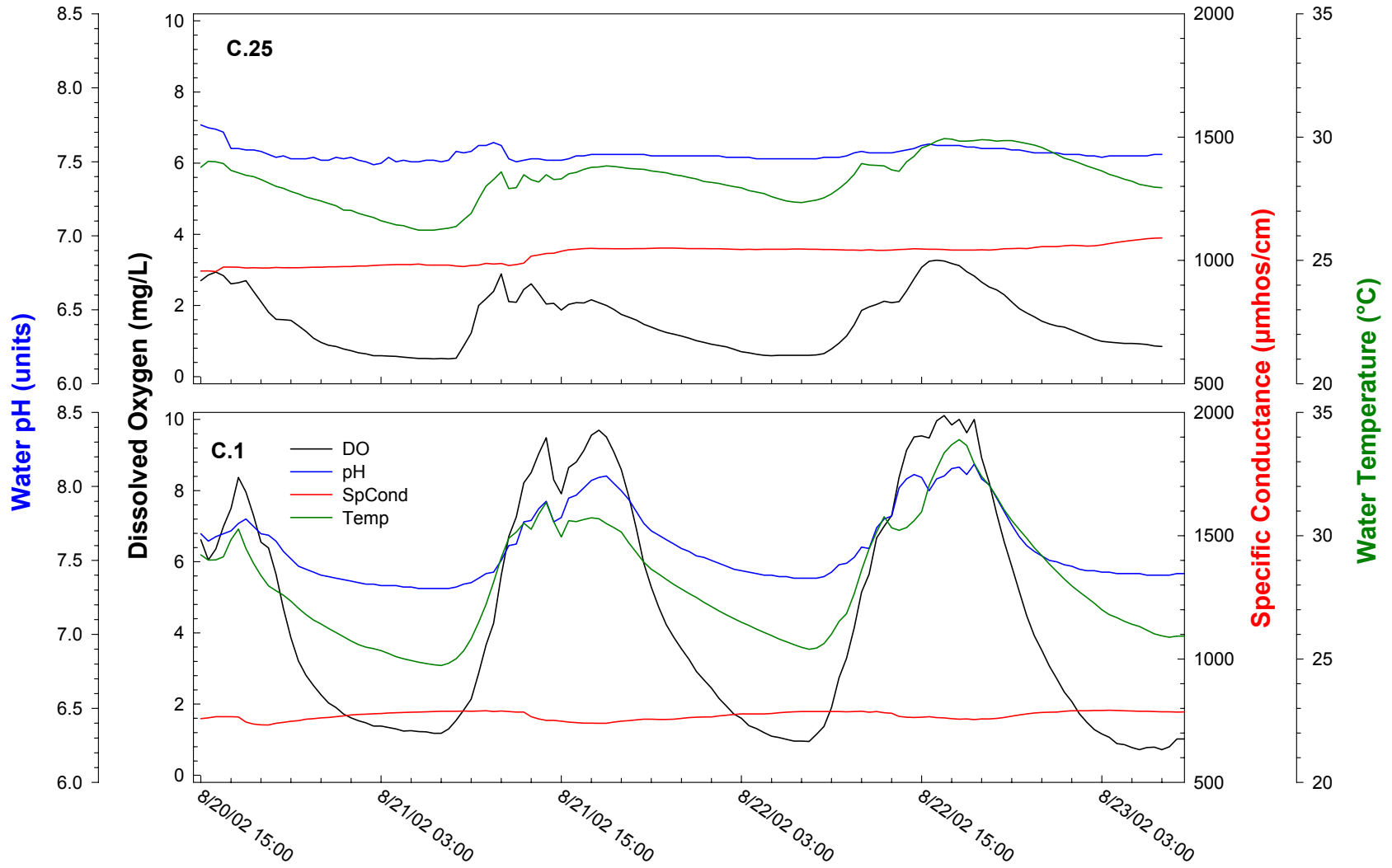


Figure 2. Diel measurements at Transect C marsh sites, August 20-23, 2002.

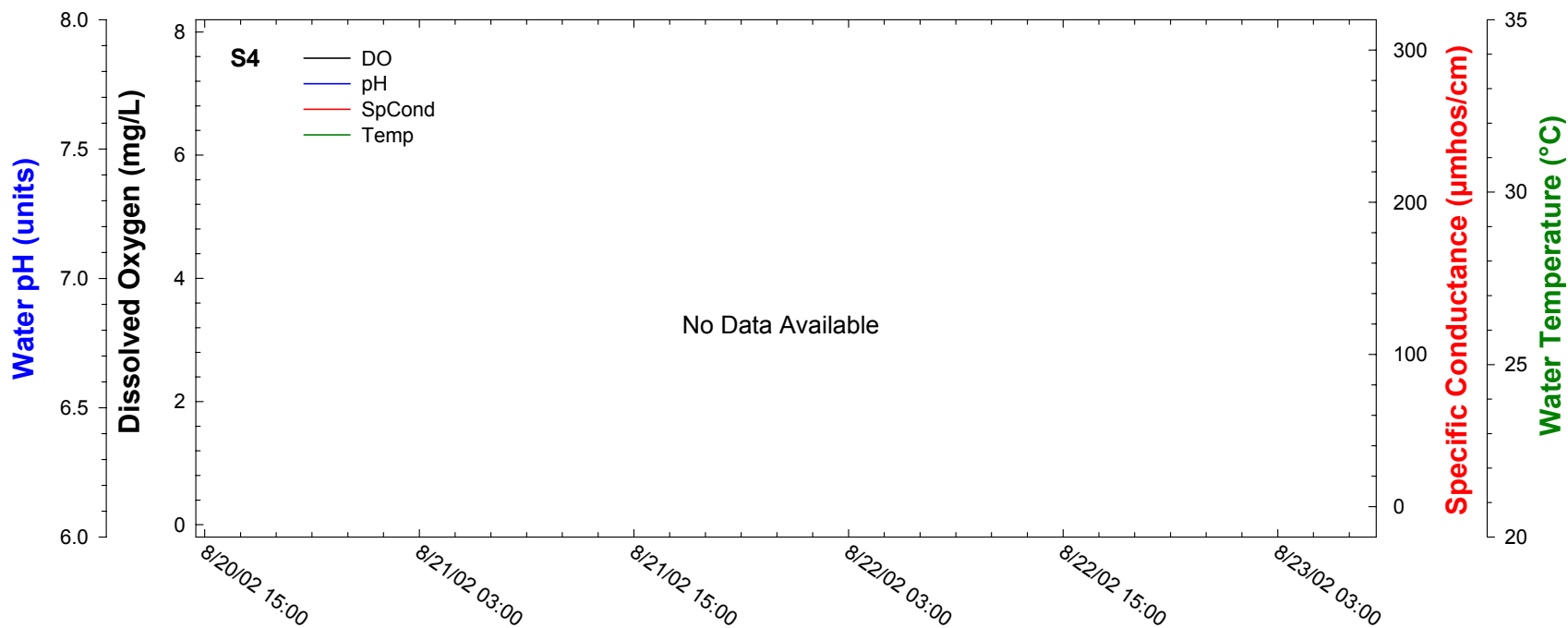


Figure 3. Diel measurements at Transect S marsh sites, August 20-23, 2002.

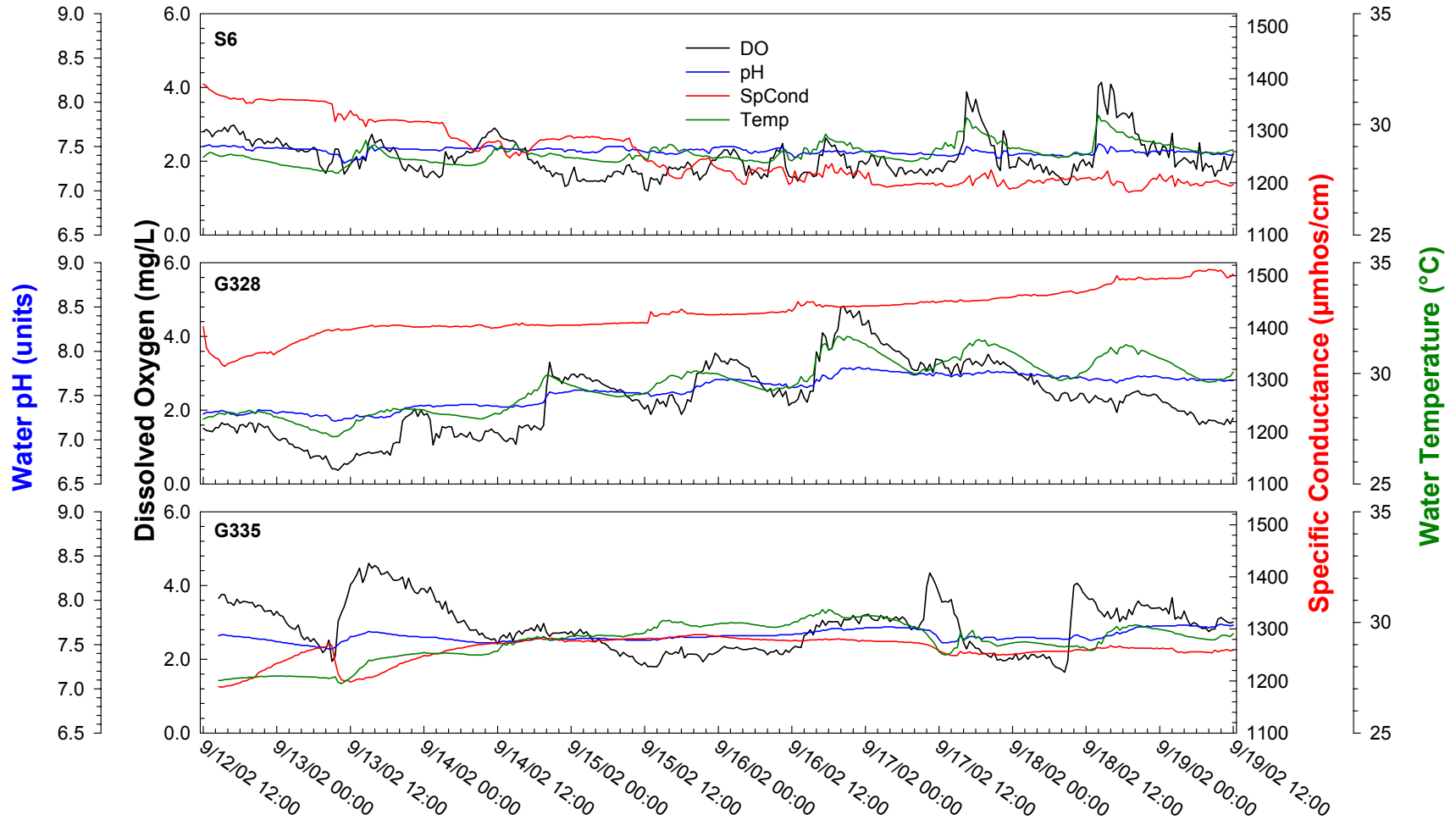


Figure 4. Diel measurements at STA-2 structures, September 12-19, 2002.

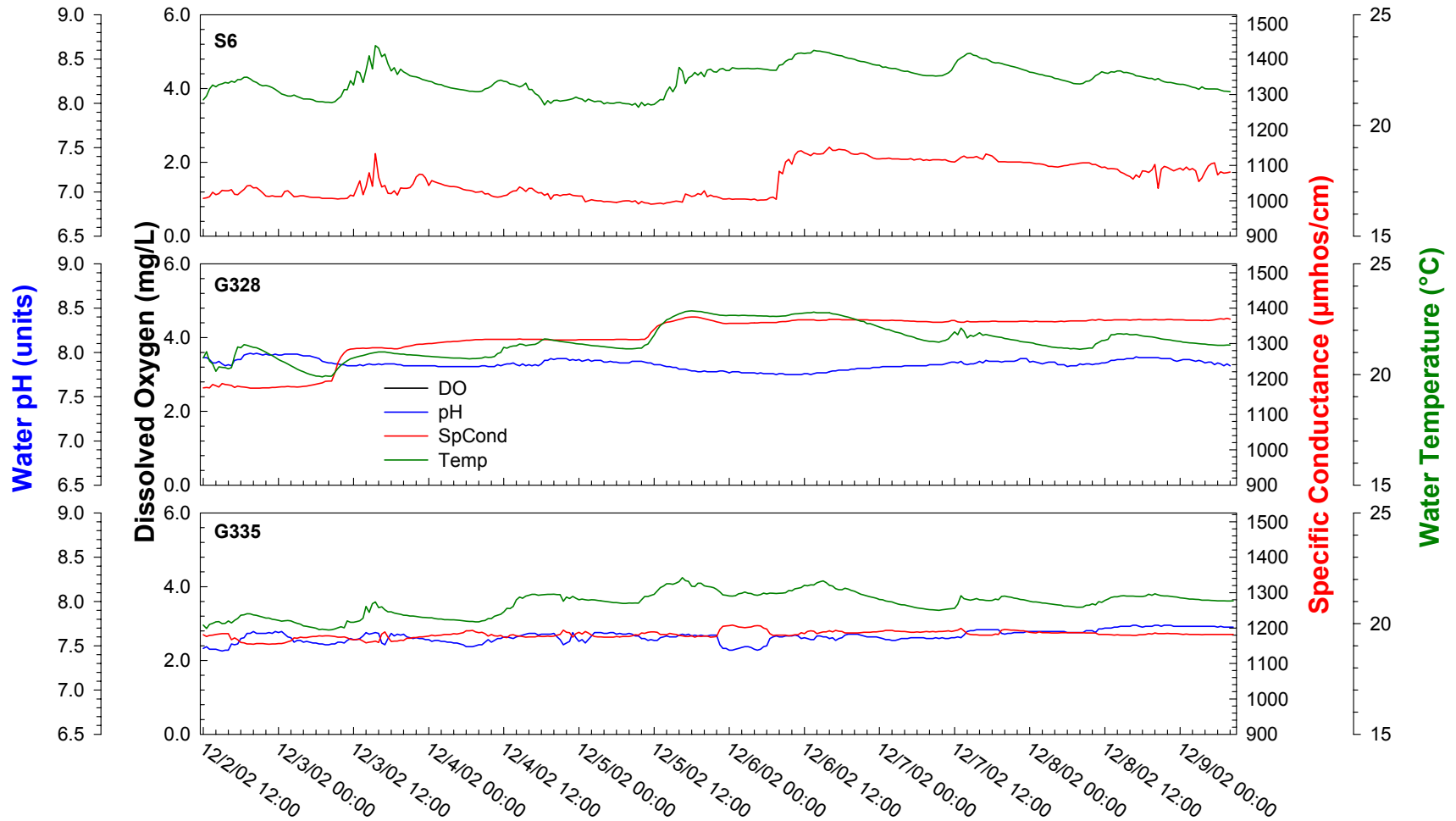


Figure 5. Diel measurements at STA-2 structures, December 2-9, 2002.

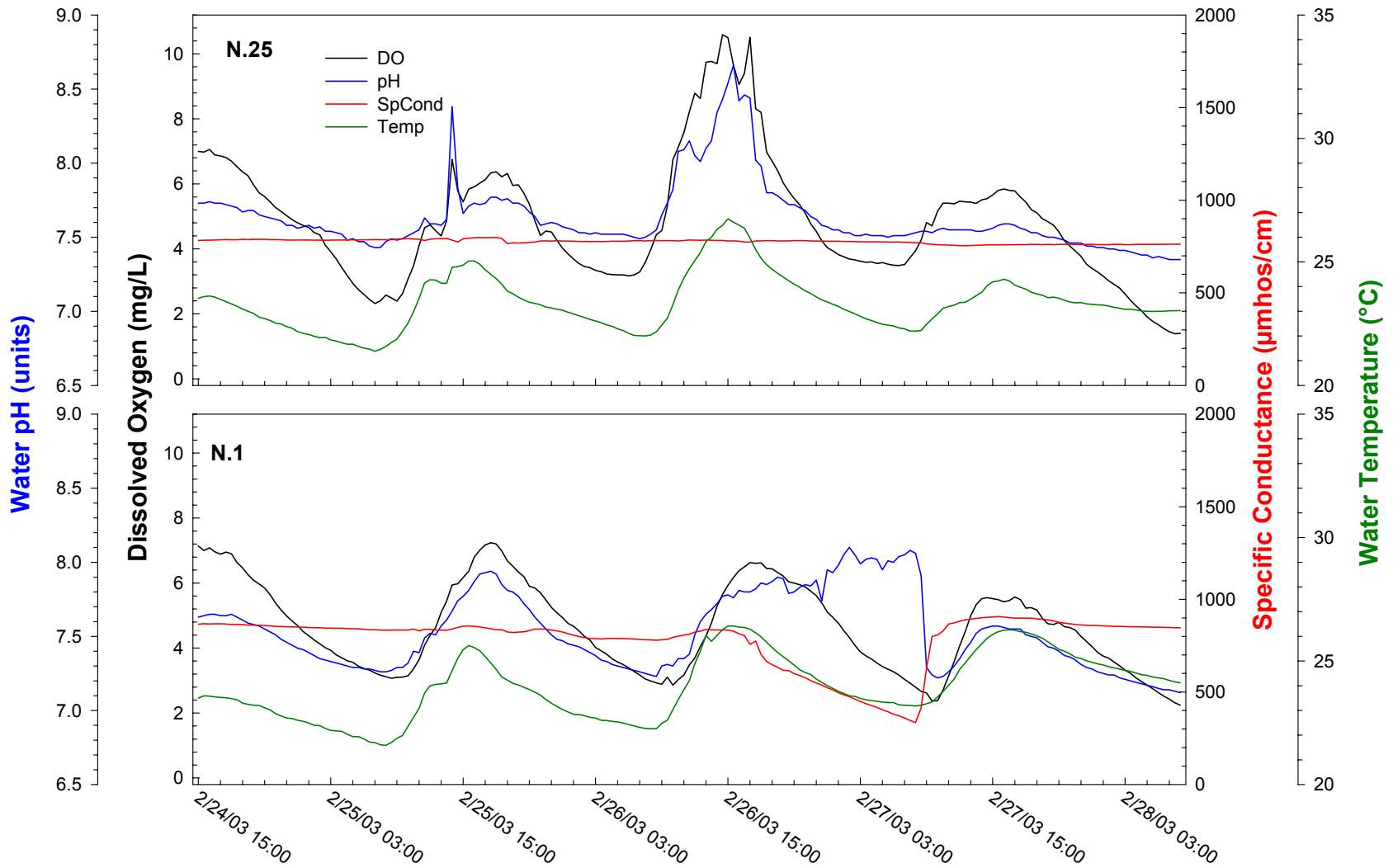


Figure 6. Diel measurements at Transect N marsh sites, February 24-28, 2003.

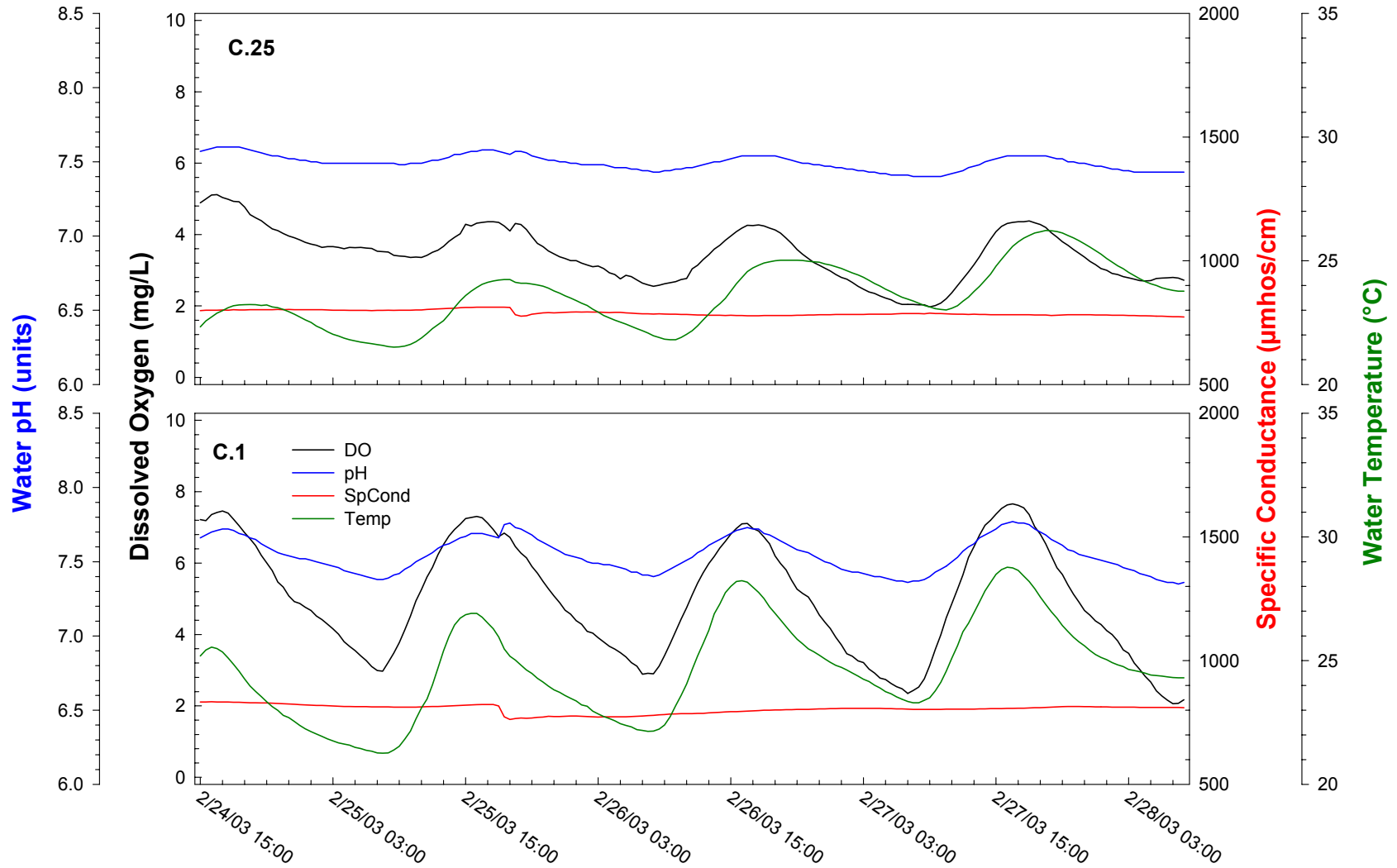


Figure 7. Diel measurements at Transect C marsh sites, February 24-28, 2003.

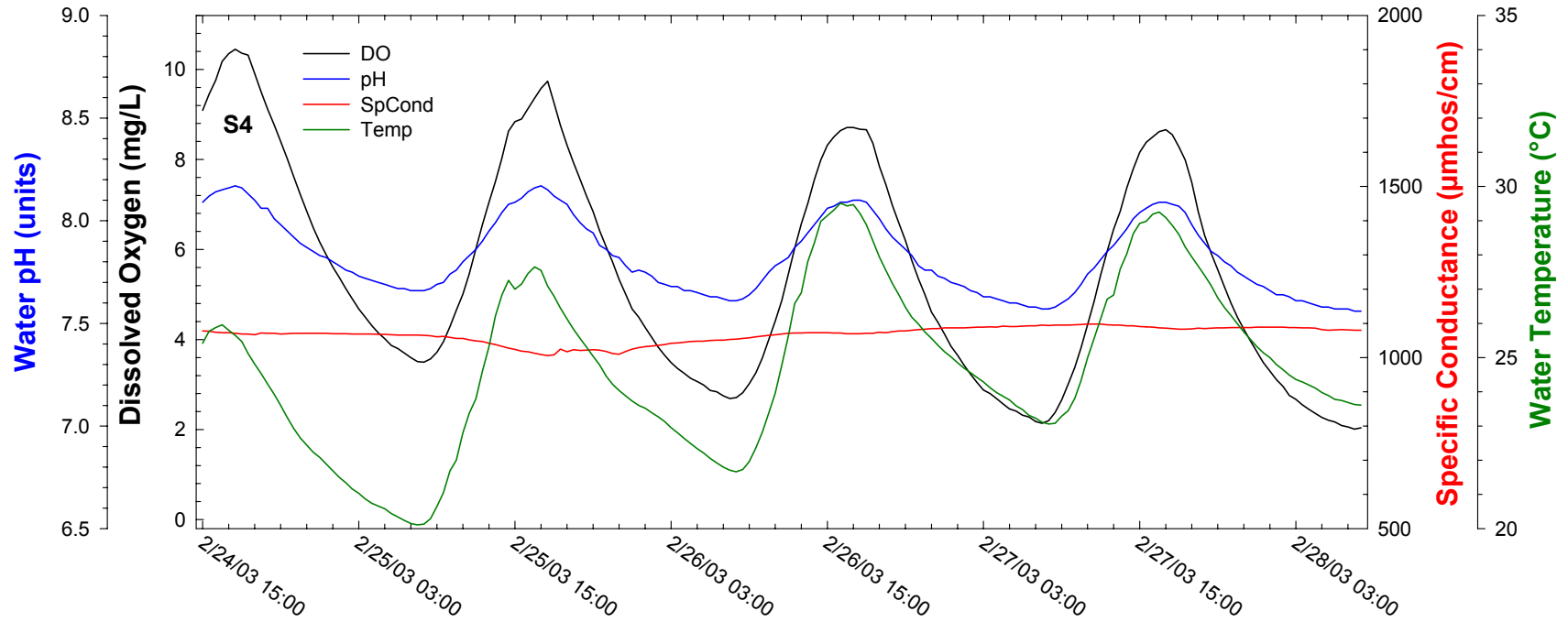


Figure 8. Diel measurements at Transect S marsh sites, February 24-28, 2003.

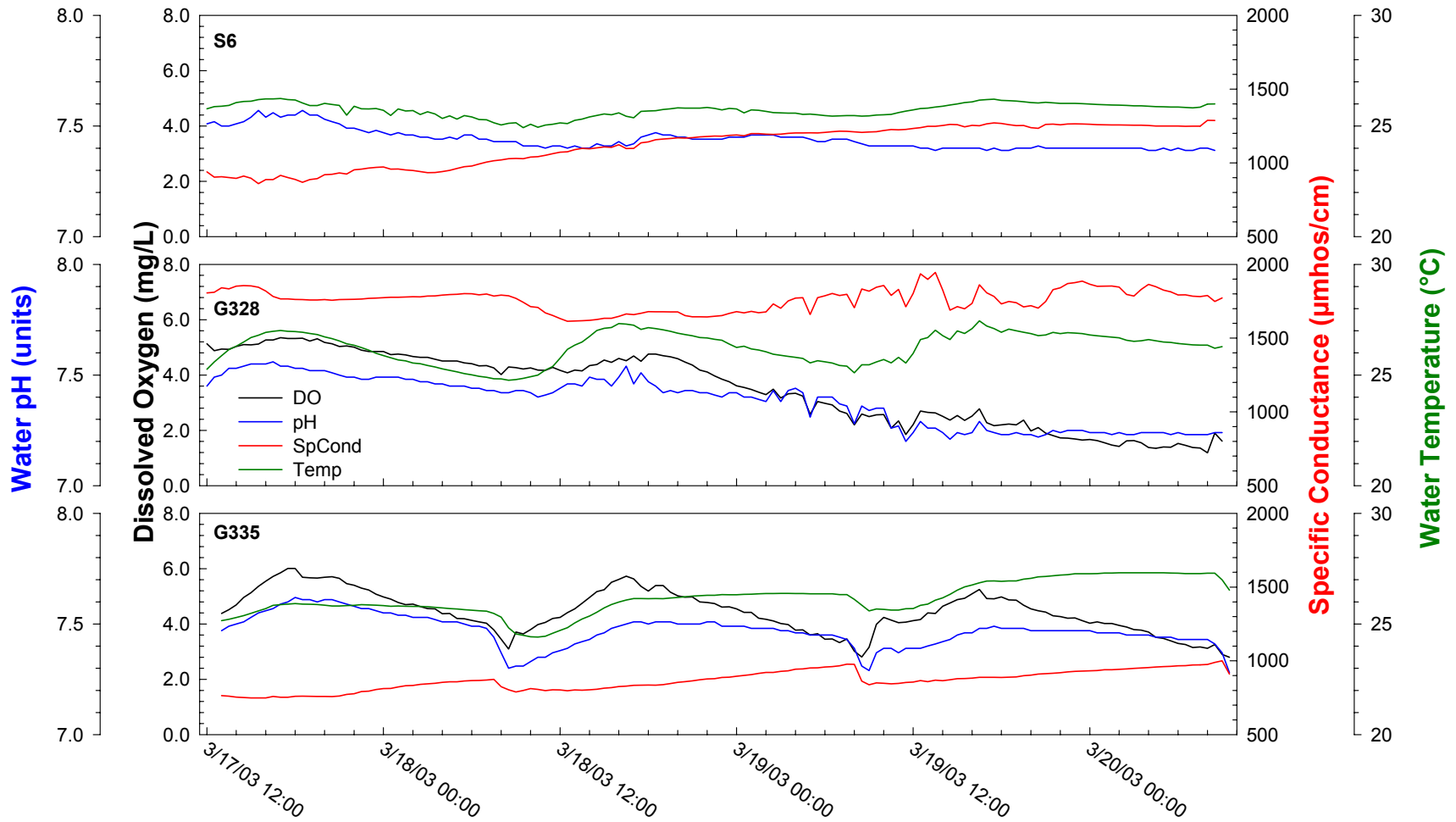


Figure 9. Diel measurements at STA-2 structures, March 17-20, 2003.