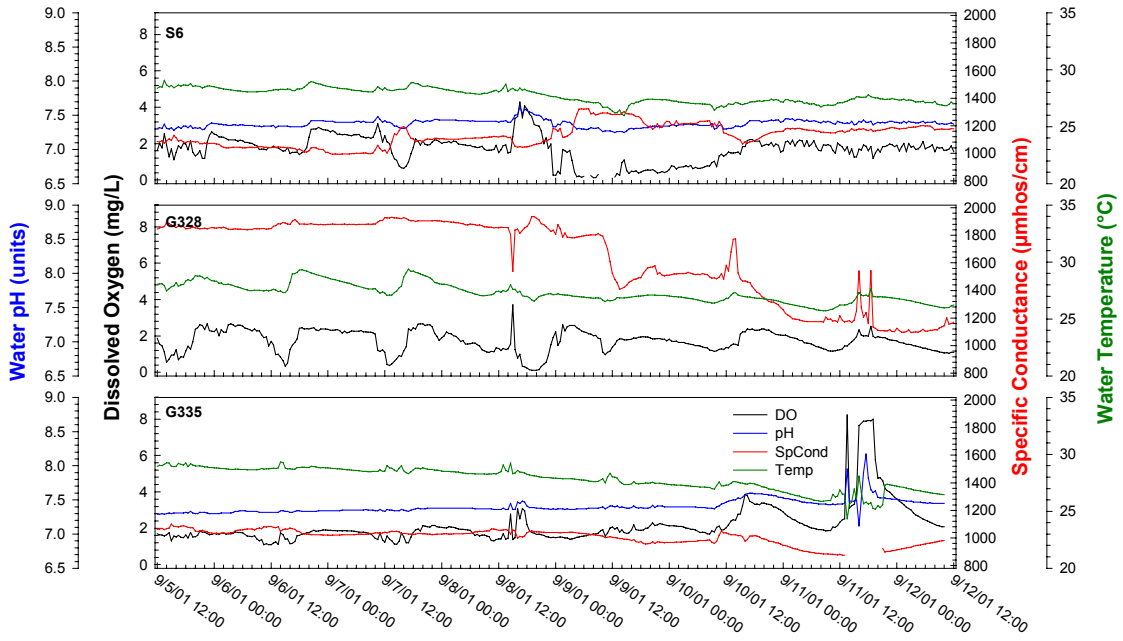


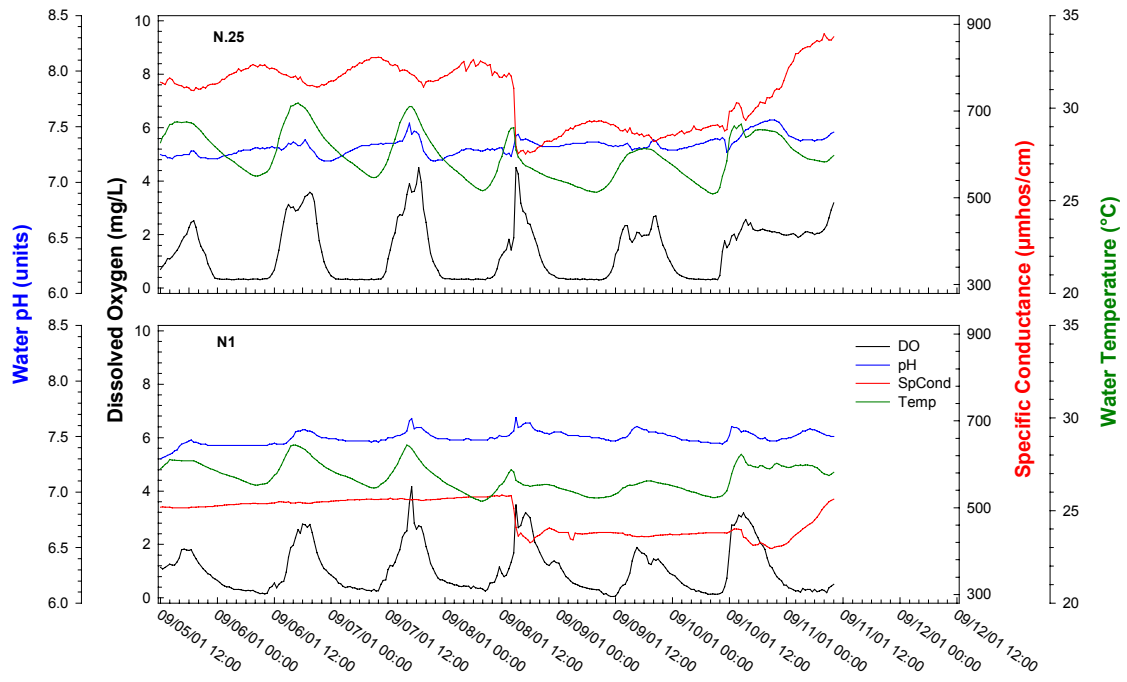
# **Appendix 4A-6: STA-2 Dissolved Oxygen Data**

**Table 1.** Statistical summary of diel parameters at the outflow stations from STA-2 and marsh stations in WCA-2 for each deployment period

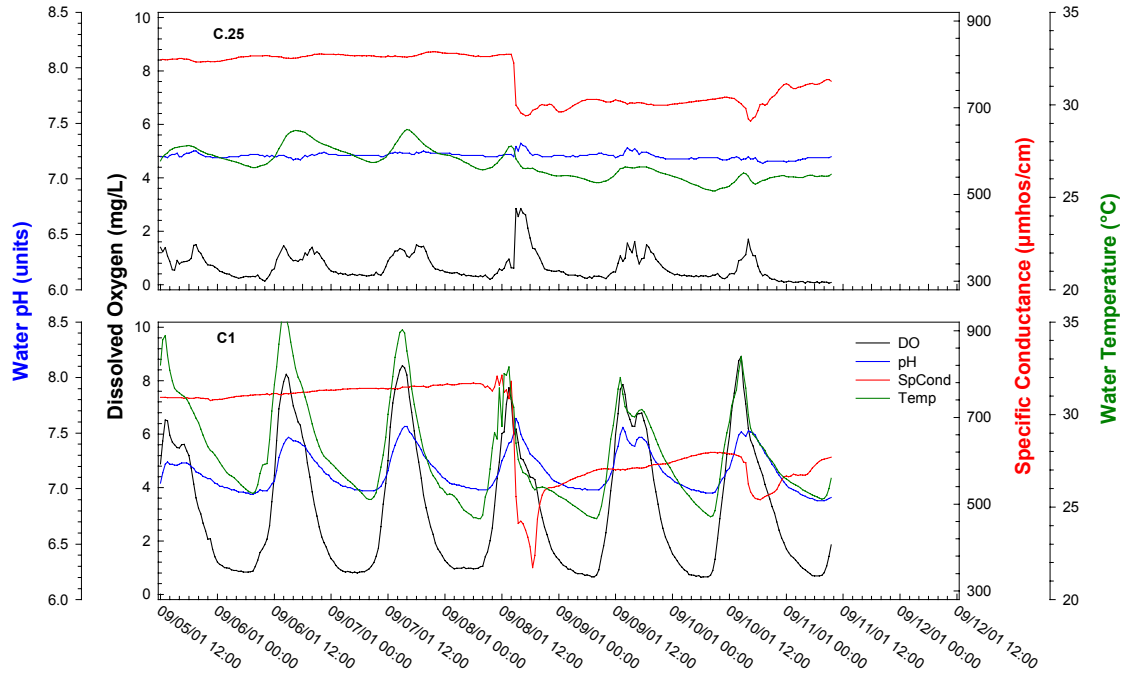
Period	Location	Station	Temperature (°C)						Specific Conductivity (µmhos/cm)						Water pH						Dissolved Oxygen (mg/L)						
			No. of Samples	Mean	Minimum	Median	Maximum	Standard Deviation	No. of Samples	Mean	Minimum	Median	Maximum	Standard Deviation	No. of Samples	Mean	Minimum	Median	Maximum	Standard Deviation	No. of Samples	Mean	Minimum	Median	Maximum	Standard Deviation	
09/05/2001 - 09/12/2001	Outflow	G335	333	27.8	24.4	28.0	29.3	1.0	320	1,007.0	652	1,026	1,100	55.3	333	7.40	7.12	7.38	8.17	0.10	333	2.18	1.09	1.87	8.22	1.13	
		C.25	284	26.8	25.4	26.7	28.7	0.8	284	769.7	689	806	829	52.9	284	7.21	7.14	7.21	7.32	0.03	284	0.66	0.06	0.47	2.85	0.50	
	C	C1	284	27.9	24.4	27.1	35.6	2.7	284	668.8	354	743	797	102.9	284	7.15	6.89	7.09	7.63	0.18	284	3.17	0.64	2.13	8.91	2.42	
		N.25	285	27.4	25.4	27.3	30.3	1.3	285	740.4	601	763	878	70.4	285	7.33	7.19	7.32	7.56	0.08	285	1.33	0.30	1.09	4.51	1.05	
	N	N1	285	26.8	25.5	26.6	28.5	0.7	285	479.4	406	501	529	39.6	285	7.49	7.30	7.48	7.67	0.06	285	1.03	0.05	0.71	4.16	0.86	
		S	S4	283	28.0	25.2	27.7	32.8	1.9	283	610.0	472	674	714	91.5	283	6.62	6.38	6.54	7.18	0.20	283	3.83	0.99	3.53	8.47	1.86
	Z	Z5	282	26.8	23.4	26.6	32.5	1.8	191	1,066.0	35	1,168	1,812	339.5	282	7.65	7.00	7.38	8.93	0.49	282	1.44	0.70	0.83	6.29	1.06	
		Z1	282	26.6	24.8	26.5	28.5	0.9	282	964.9	765	957	1,713	172.8	282	7.25	7.19	7.25	7.36	0.03	282	0.85	0.64	0.68	5.15	0.56	
		Z2	283	25.6	24.4	25.5	27.4	0.8	283	758.8	583	805	840	79.5	283	7.26	7.19	7.26	7.38	0.03	283	0.33	0.03	0.13	2.04	0.40	
		Z4	283	28.1	25.6	27.9	31.3	1.5	283	778.6	616	838	852	78.7	283	7.38	7.27	7.36	7.61	0.08	283	2.19	0.26	1.86	5.53	1.57	
	11/15/2001 - 11/21/2001	Outflow	G335	286	21.9	21.3	21.7	24.6	0.5	286	1,348.5	1,341	1,348	1,359	4.9	286	7.74	7.62	7.74	7.92	0.08	286	5.10	4.12	5.05	6.31	0.30
			C.25	187	21.7	20.9	21.7	23.2	0.5	187	1,152.2	1,146	1,152	1,157	3.3	187	7.51	7.47	7.49	7.63	0.04	187	0.79	0.29	0.46	2.64	0.62
C		C1	187	22.7	19.6	22.6	26.8	2.0	187	1,223.8	1,119	1,225	1,239	11.3	187	7.58	7.47	7.57	7.79	0.08	187	4.19	1.26	3.82	8.36	1.92	
		C4	187	22.0	19.9	21.9	24.8	1.5	187	1,102.1	1,095	1,102	1,107	2.9	187	7.75	7.68	7.74	7.89	0.06	187	3.95	1.83	3.71	7.69	1.56	
N		N.25	186	22.2	17.3	21.6	27.2	2.4	110	772.4	10	800	1,165	375.2	186	8.19	7.36	8.16	10.45	0.60	186	2.60	0.19	2.42	7.49	2.06	
		N1	186	22.0	20.9	21.9	23.3	0.6	186	1,180.2	1,102	1,182	1,236	25.4	186	7.27	7.19	7.26	7.41	0.05	186	1.01	0.15	0.87	2.62	0.66	
S		N4	187	20.8	18.5	20.8	22.6	1.0	187	1,002.6	421	1,171	1,558	332.7	187	7.40	7.35	7.41	7.46	0.03	187	1.59	0.83	1.63	2.07	0.29	
		S4	187	23.2	20.8	23.0	26.4	1.4	187	1,286.7	1,247	1,287	1,318	18.6	187	8.03	7.88	7.99	8.32	0.11	187	5.37	2.11	4.94	9.72	2.17	
Z		Z5	187	22.2	20.3	22.0	25.0	1.1	187	953.5	854	969	1,018	46.4	187	7.78	7.62	7.76	8.10	0.12	187	2.01	0.01	0.39	8.02	2.52	
		Z1	187	21.6	19.7	21.2	25.1	1.4	132	1,207.8	679	1,270	1,341	179.9	187	7.79	7.28	7.64	8.74	0.47	187	1.06	0.18	0.76	2.94	0.87	
		Z2	187	20.9	20.0	20.6	23.1	0.7	187	1,196.0	1,125	1,210	1,224	29.0	187	7.53	7.43	7.52	7.71	0.07	187	0.85	0.47	0.61	3.50	0.48	
		Z4	187	23.3	21.0	23.1	26.6	1.4	187	814.6	742	801	1,003	73.0	187	7.57	7.44	7.54	7.77	0.09	187	3.67	1.84	3.40	6.05	1.23	
03/06/2002 - 03/13/2002	Outflow	G335	332	21.2	18.7	21.4	25.6	1.9	321	1,303.9	1,292	1,304	1,320	5.1	330	7.83	6.32	7.81	13.76	0.37	332	6.15	5.30	6.11	9.11	0.56	



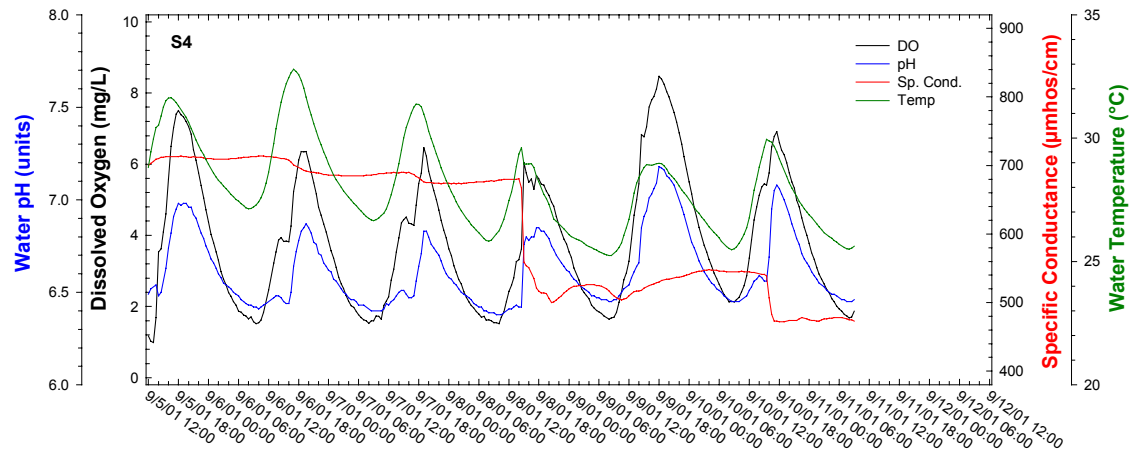
**Figure 1.** Diel measurements at STA-2 structures, September 5 through 12, 2001



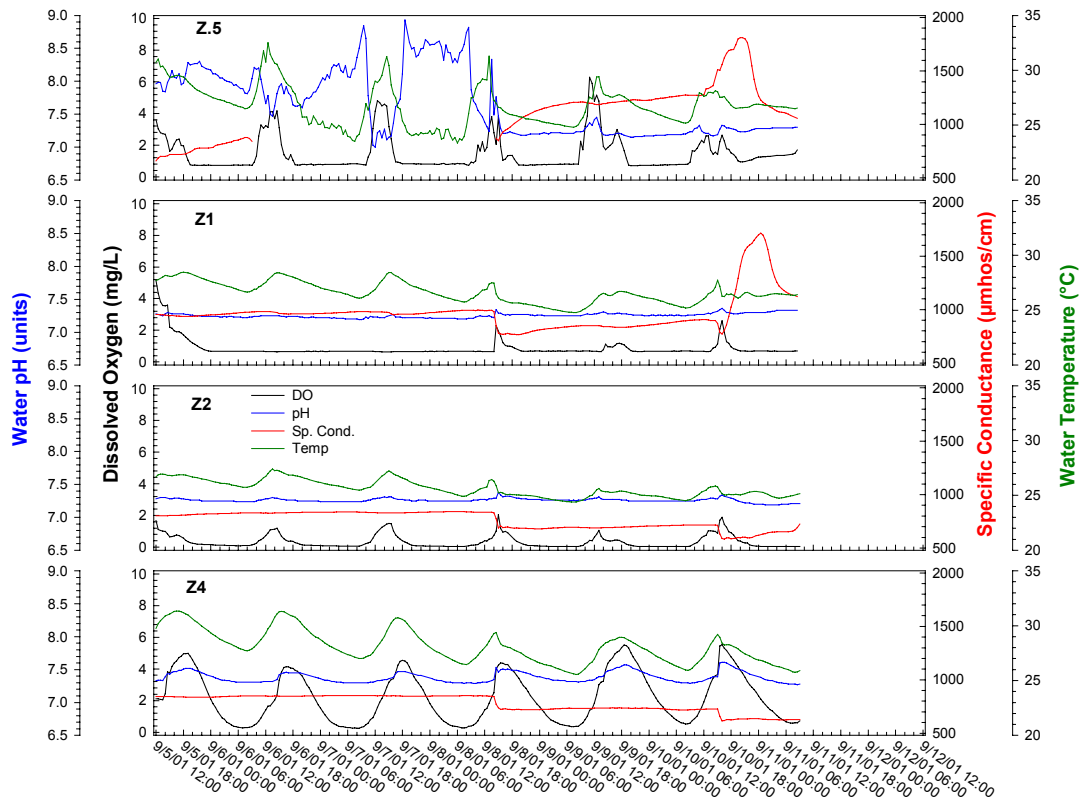
**Figure 2.** Diel measurements at transect N marsh sites, September 5 through 12, 2001



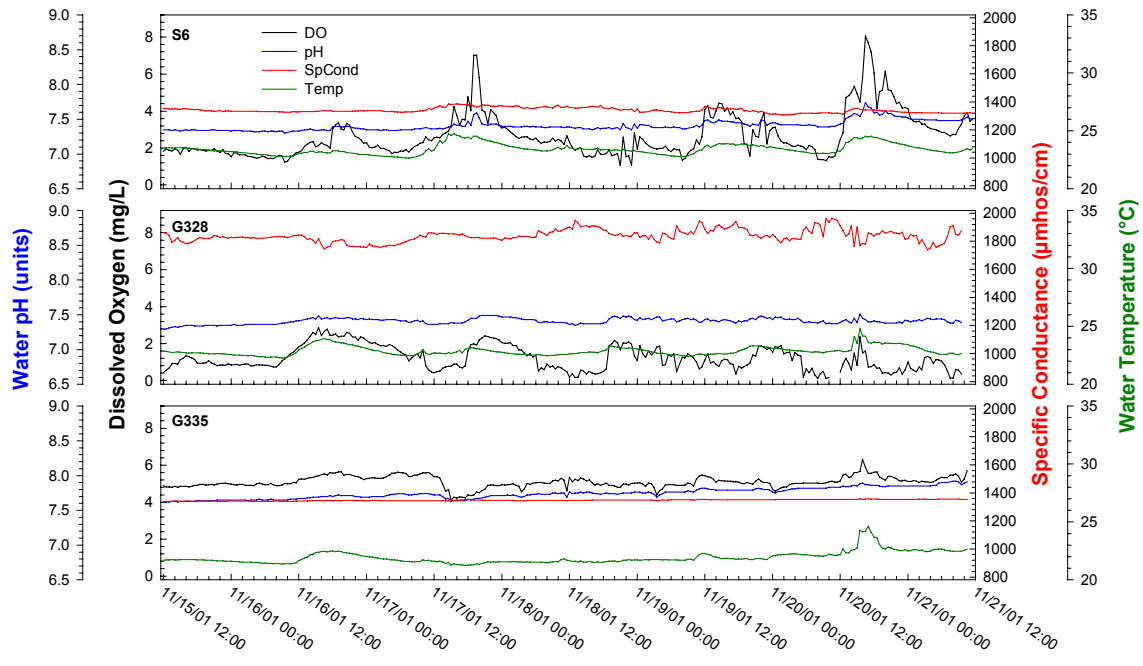
**Figure 3.** Diel measurements at transect C marsh sites, September 5 through 12, 2001



**Figure 4.** Diel measurements at marsh site S-4, September 5 through 12, 2001

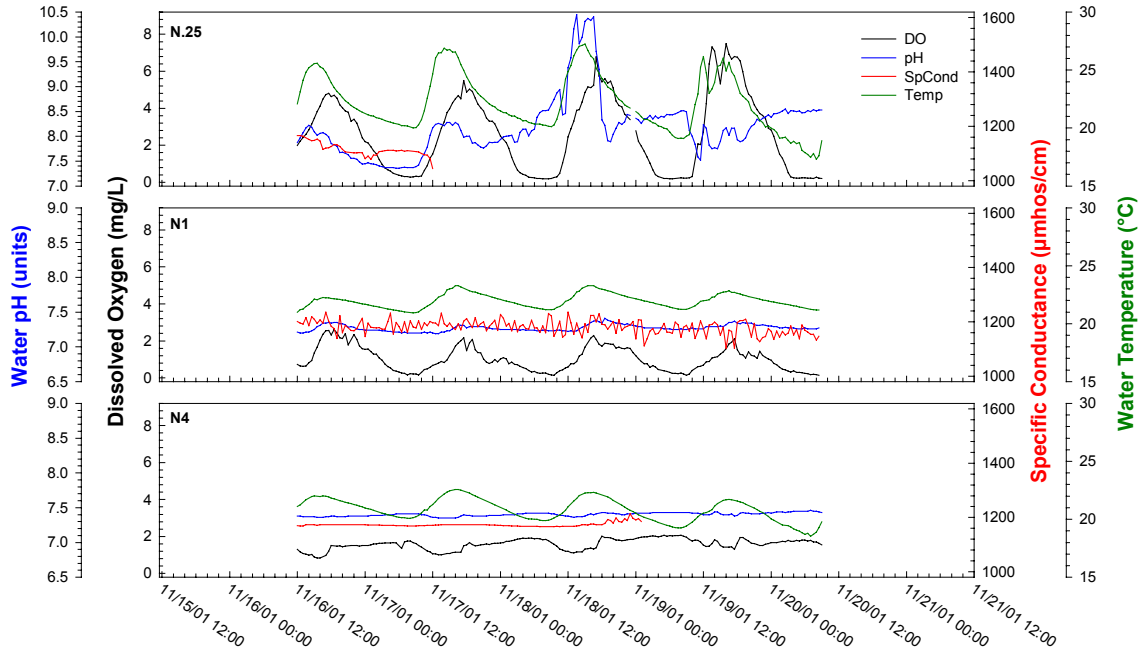


**Figure 5.** Diel measurements at transect Z marsh sites, September 5 through 12, 2001

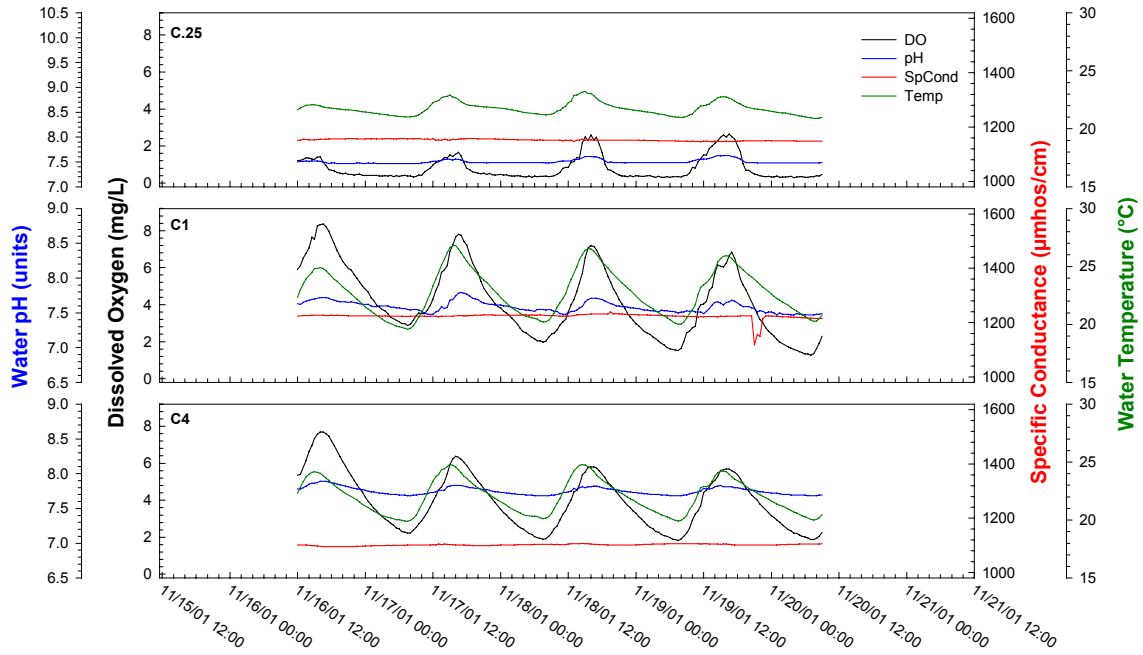


**Figure 6.** Diel measurements at STA-2 structures, November 15 through 21, 2001

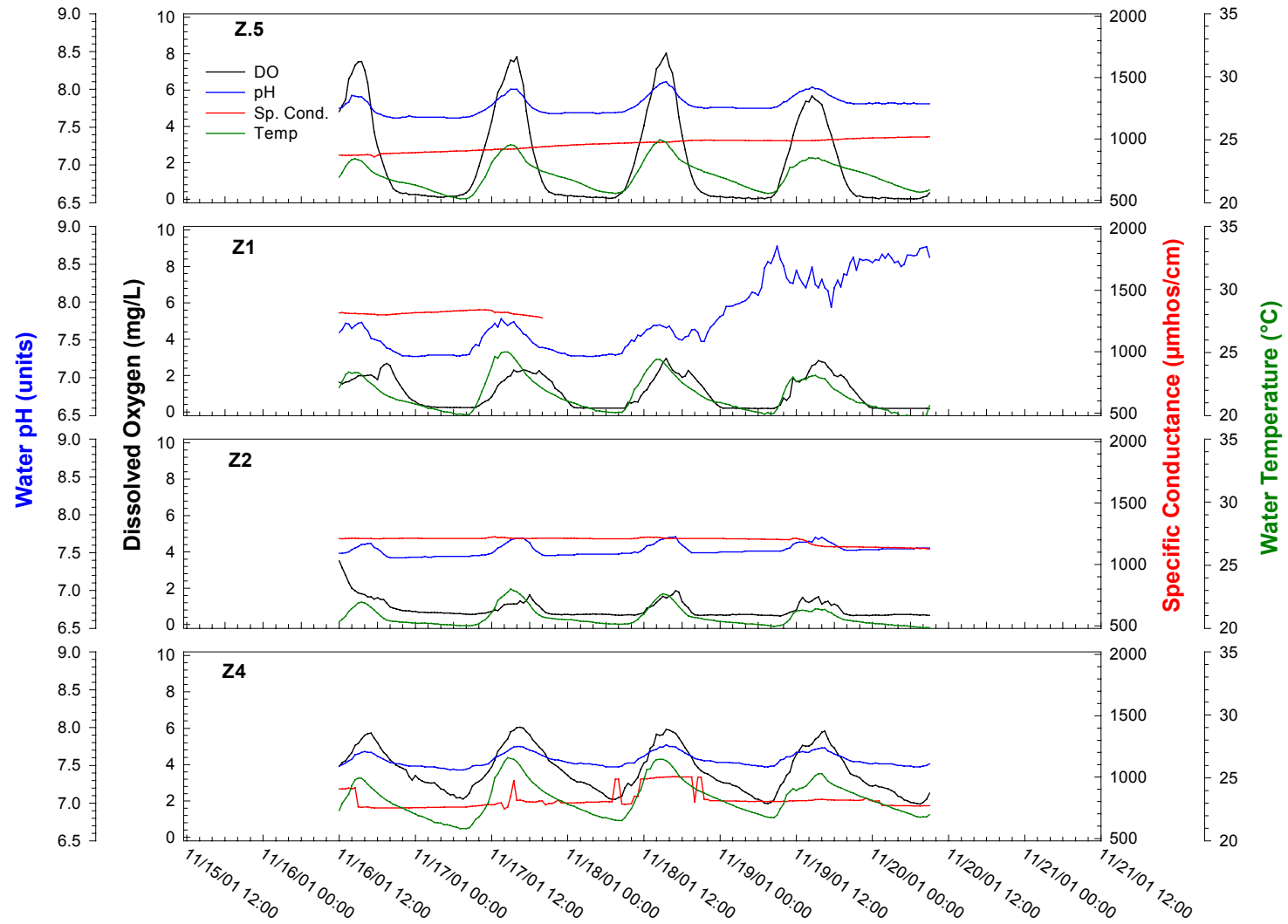




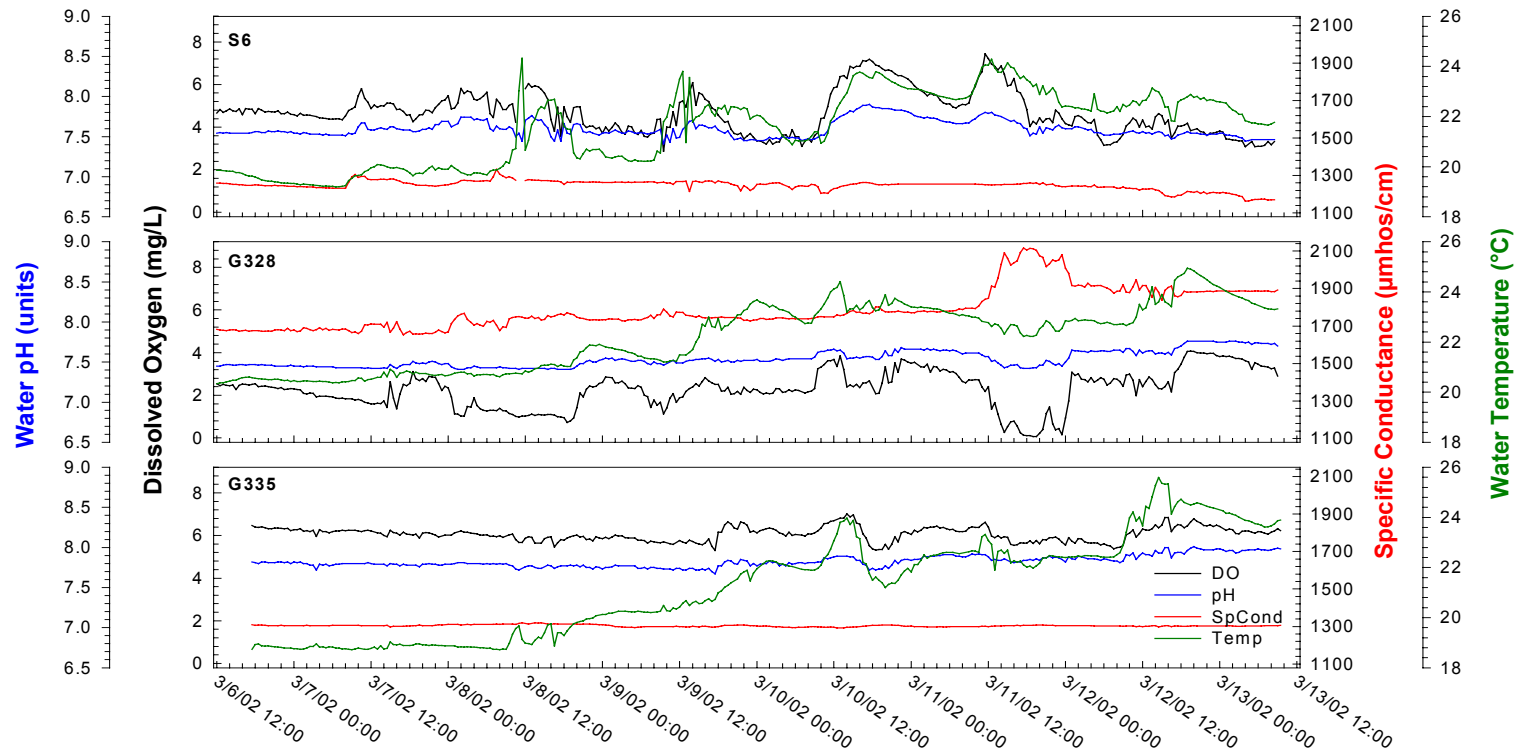
**Figure 7.** Diel measurements at transect N marsh sites, November 15 through 21, 2001



**Figure 8.** Diel measurements at transect C marsh sites, November 15 through 21, 2001



**Figure 9.** Diel measurements at transect Z marsh sites, November 15 through 21, 2001



**Figure 10.** Diel measurements at STA-2 structures, March 6 through 13, 2002