



Public Use Project Updates

SFWMD Recreational Forum

September 13, 2021

Dan Cotter
SFWMD, Land Stewardship Section



A-1 FEB Public Access Change

➤ A-1 Flow Equalization Basin (FEB) located in Palm Beach County.

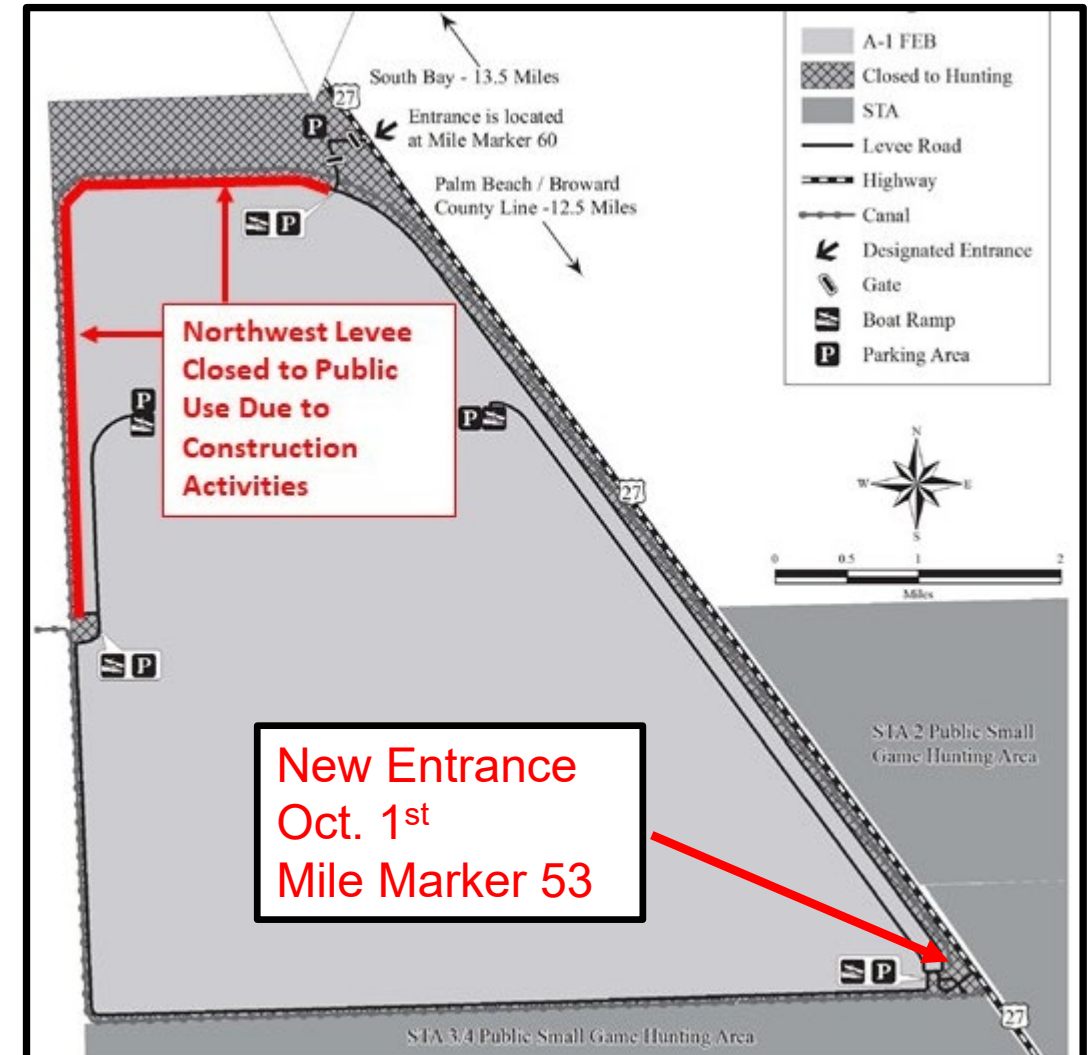
- New public access entrance starting October 1st.
- Located 7.25 miles south of existing entrance on US 27, at approx. mile marker 53.



Fishing in A-1 FEB



New entrance

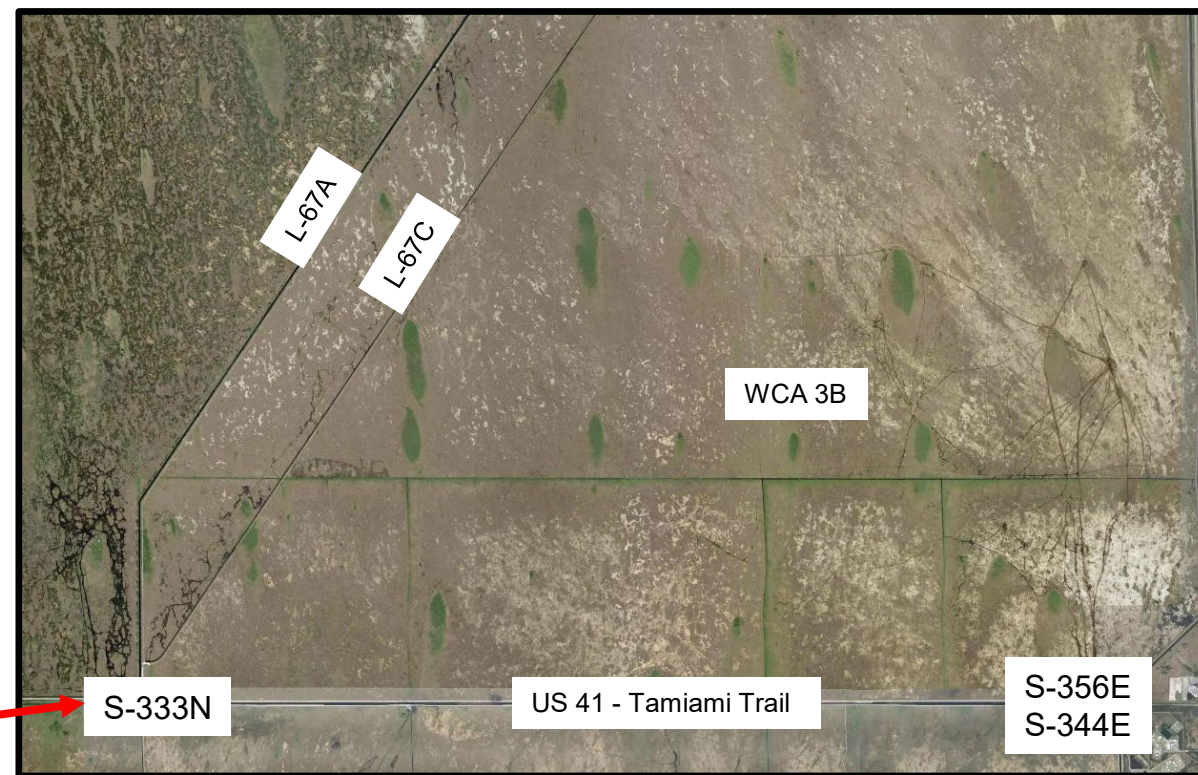




CEPP South Project

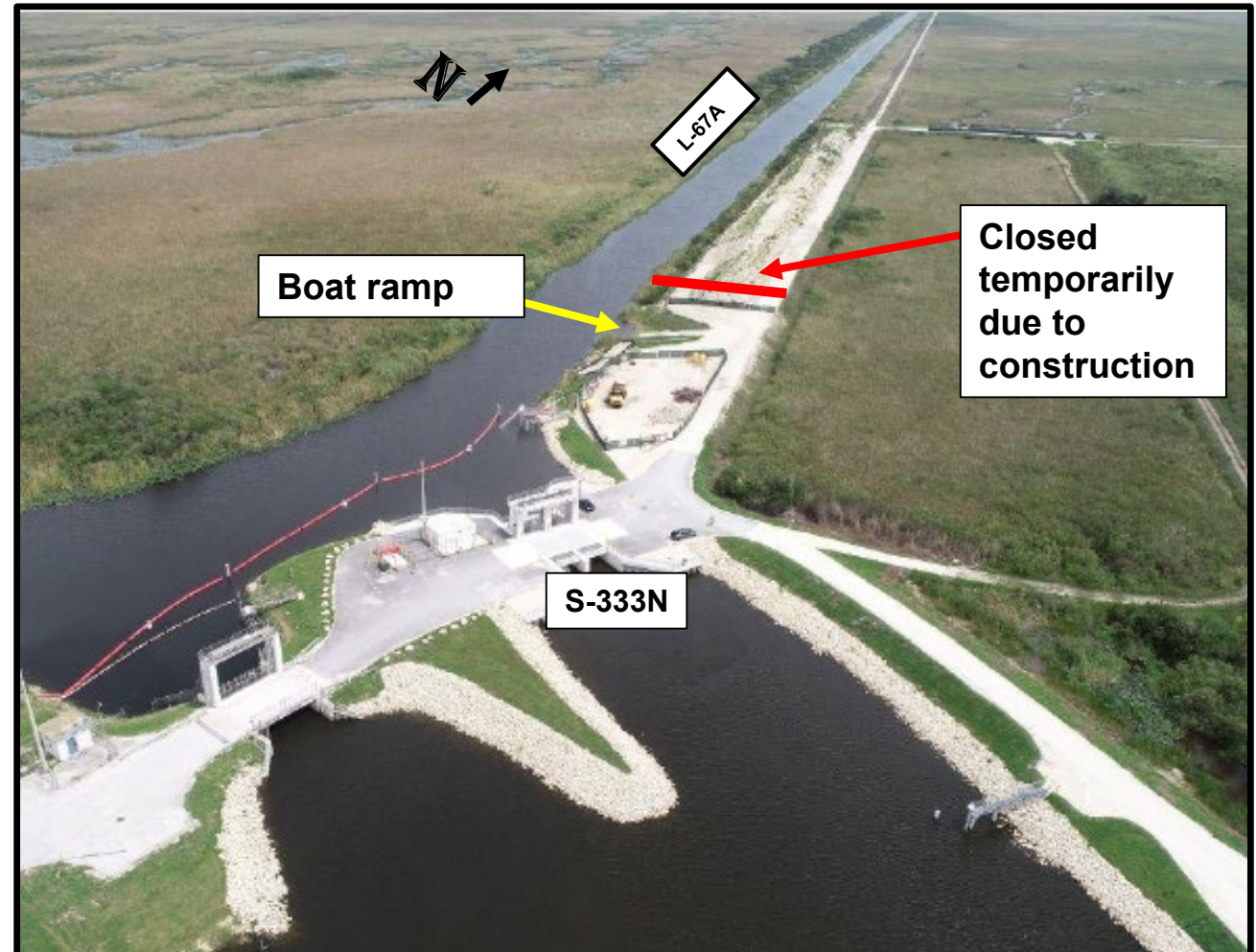
➤ Central Everglades Planning Project (CEPP) South

- Located in Miami-Dade / Broward County.
- New S-333N water control structure built.



CEPP South Project

- Central Everglades Planning Project (CEPP) South
 - Construction projects on L-67 levees underway.
 - Boat ramp access into L-67A with limited parking during construction.
 - When construction is completed, public access will be enhanced in this area.





CEPP South Project

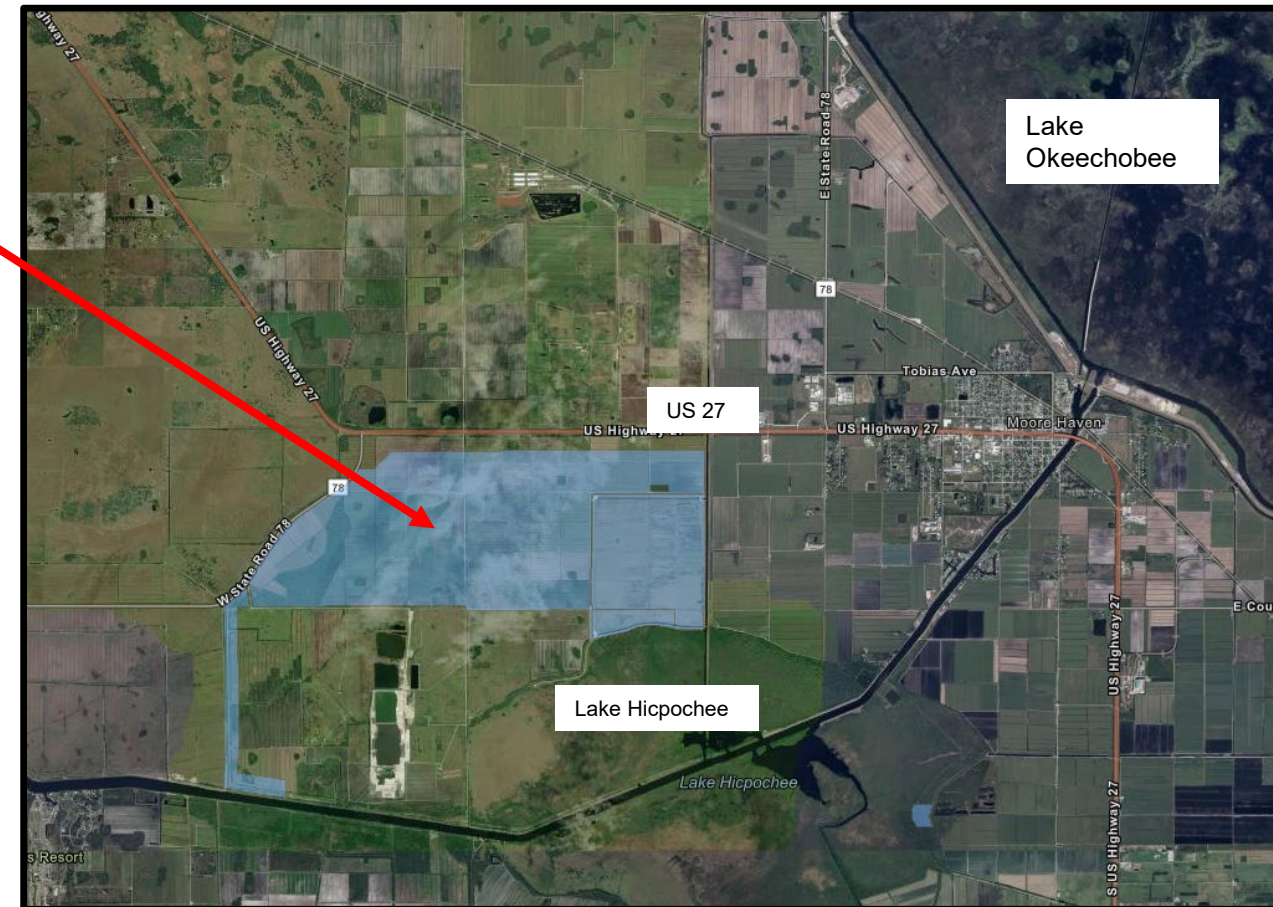
- S-333N water control structure
 - Designed with picket railings to allow for fishing.





Lake Hicpochee Phase 2

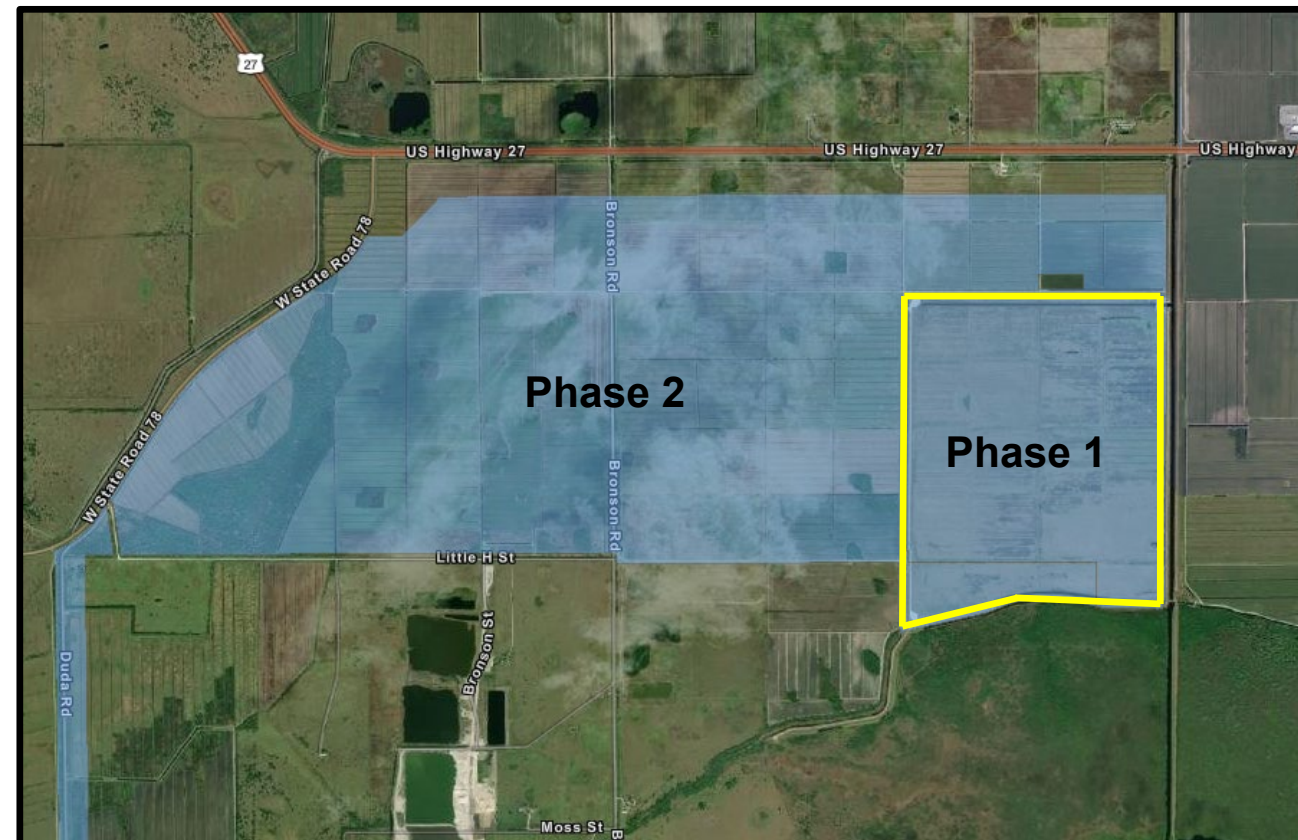
- Lake Hicpochee Storage and Shallow Hydrologic Enhancement Project
 - Located just west of City of Moore Haven in Glades County.





Lake Hicpochee Phase 2

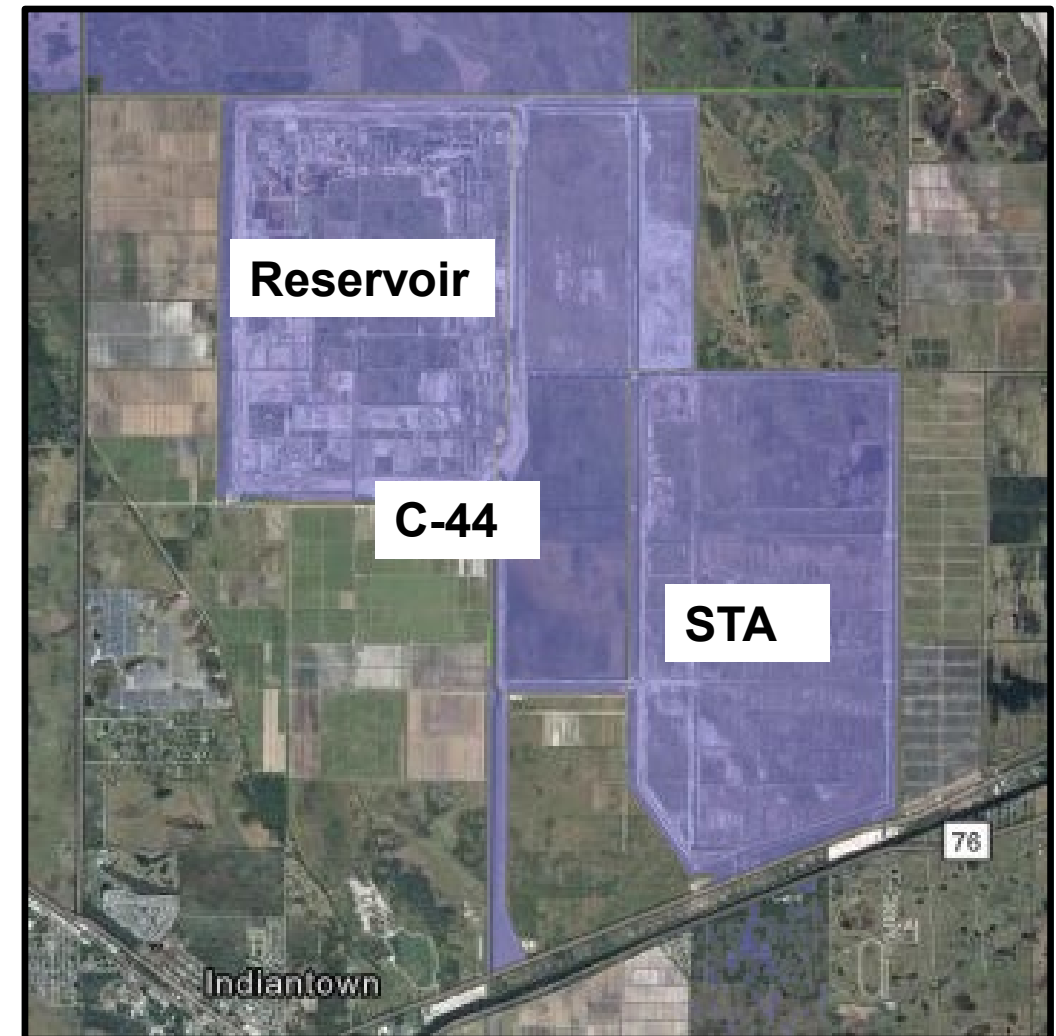
- Phase 1: 670 acres, ~2' depth
- Phase 2: Flow Equalization Basin (FEB)
 - 2500 acres, ~4' depth.
 - Design to be completed Dec. 2022.
 - Recreation planning:
 - Parking area and small boat and canoe / kayak ramp access.
 - Picnic shelter, kiosk, signage.
 - Picket railings around structures for fishing.





C-44 Project

- C-44 Reservoir and Stormwater Treatment Area
 - Located in Western Martin County.
 - Reservoir is ~3,600 acres.
 - STA is ~6,400 acres.





C-44 Project

➤ C-44 Reservoir Area

- Reservoir and intake canal currently an active construction site.
- Reservoir filling operation scheduled to start this Fall after dam safety monitoring requirements are met and then operational testing phase to be completed by late 2022.



Reservoir outflow testing



Construction staging area



C-44 Project

- C-44 Stormwater Treatment Area
 - STA construction complete and currently under new STA operational and testing phase.
 - Managed recreation opportunities TBD for next year.
 - Future recreation activities may include hiking, biking, wildlife viewing, hunting, birding tours.



STA plant management



Loxahatchee River

- Loxahatchee River located in Palm Beach & Martin Counties
 - Portage ramp at Masten Dam is temporarily closed.
 - The District is planning on making repairs to the decking at both portages as needed.



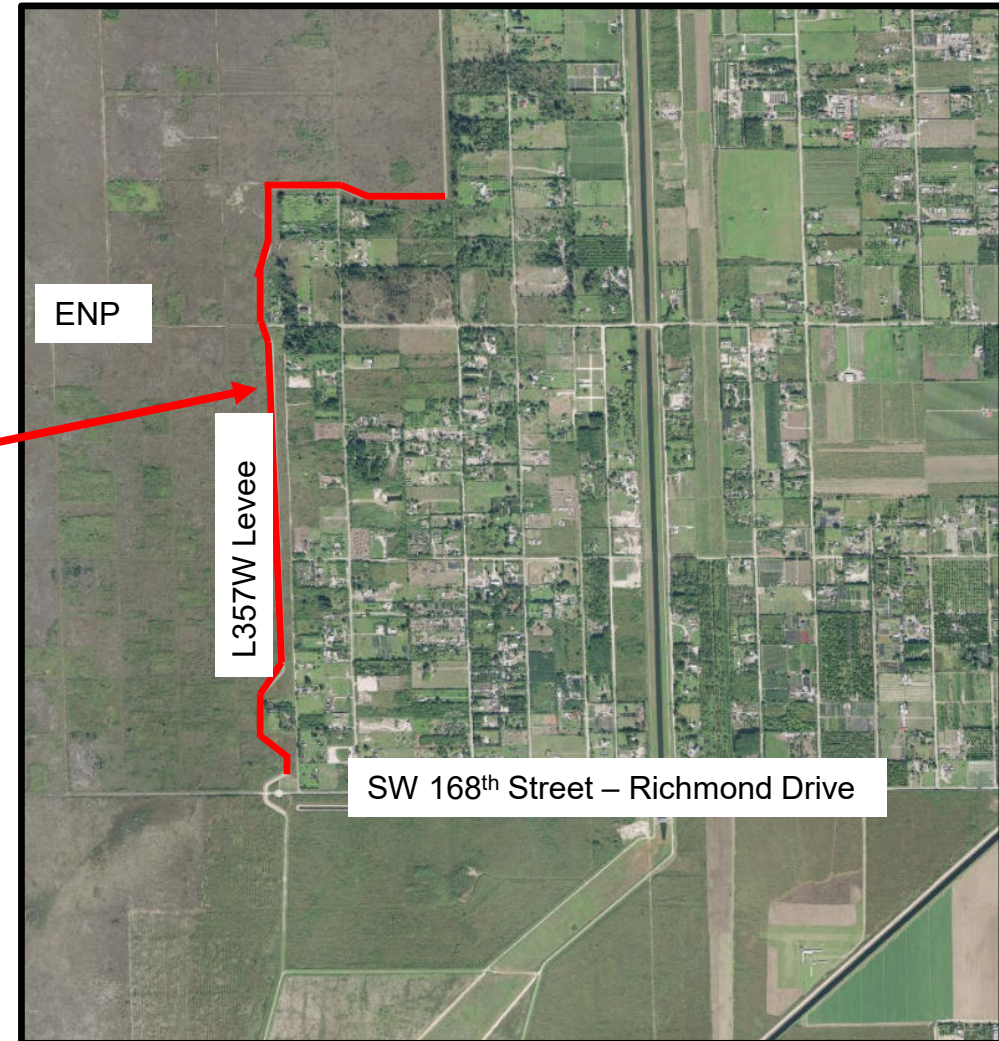
Masten Dam portage



8.5 SMA

➤ 8.5 Square Mile Area construction.

- Located in Miami-Dade County adjacent to Everglades National Park (ENP).
- Levee closed to public use.
- Construction expected to be complete April 2022.





Prescribed Fire on District lands

- District staff recognized at August Governing Board, successfully completed prescribed burns on over 28,000 acres this past year.





Questions?

DRAFT



Thank
You!