

# Comprehensive Everglades Restoration Plan CERP 102

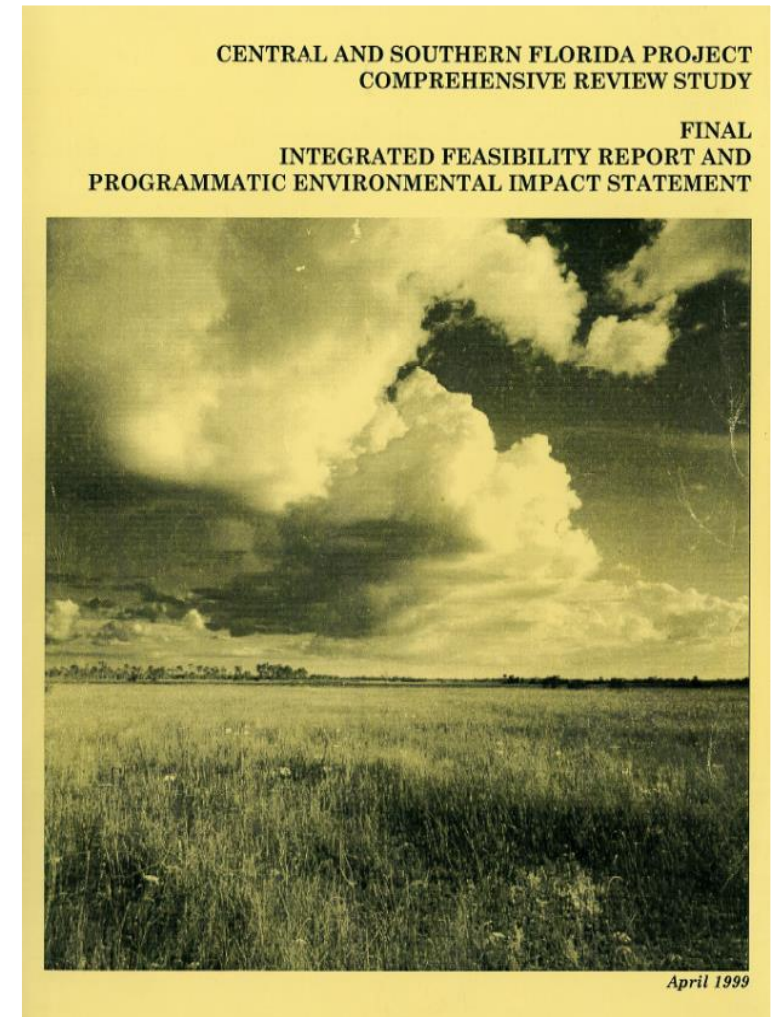
## Program Management

Jennifer Leeds, Bureau Chief  
Leslye Waugh, Section Administrator  
Megan Jacoby, Principal Federal Policy Analyst  
Ecosystem Restoration Planning  
South Florida Water Management District  
Governing Board Workshop  
April 7, 2021



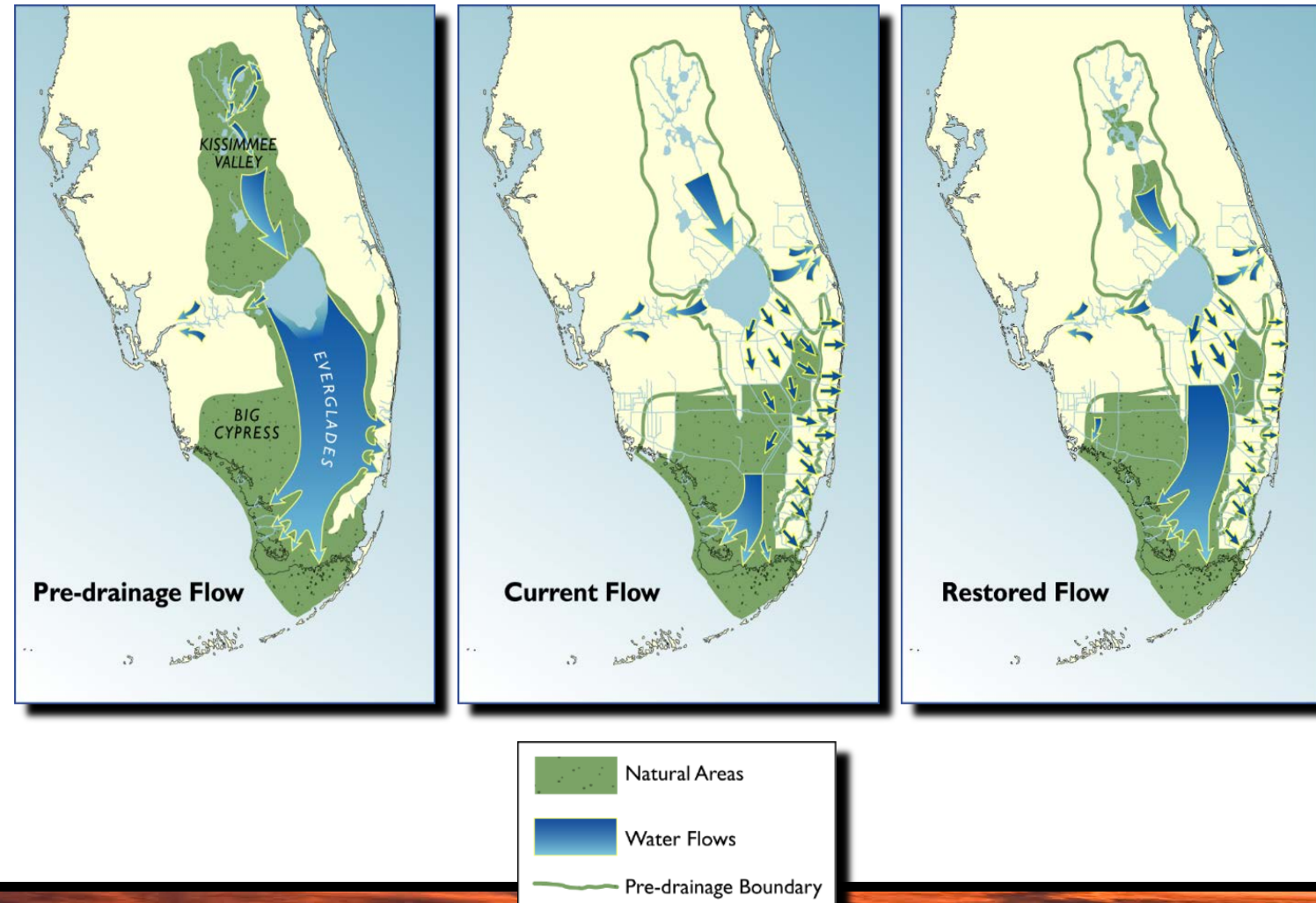
# CERP Refresher

- Comprehensive Everglades Restoration Plan (CERP)
  - Framework for Everglades restoration
  - Authorized by Congress in WRDA 2000
    - Additional authorizations through 2020
  - Partnership with the U.S. Army Corps of Engineers
  - 68 components
  - Estimated cost = ~\$21B



# CERP and the Federal Partnership

- How do we manage the largest hydrologic restoration project in the world?
  - Long-term planning (IDS)
  - Cost share agreements
  - Cost share balance
  - Communication



# Integrated Delivery Schedule



Presenter:

Leslye Waugh

Section Administrator

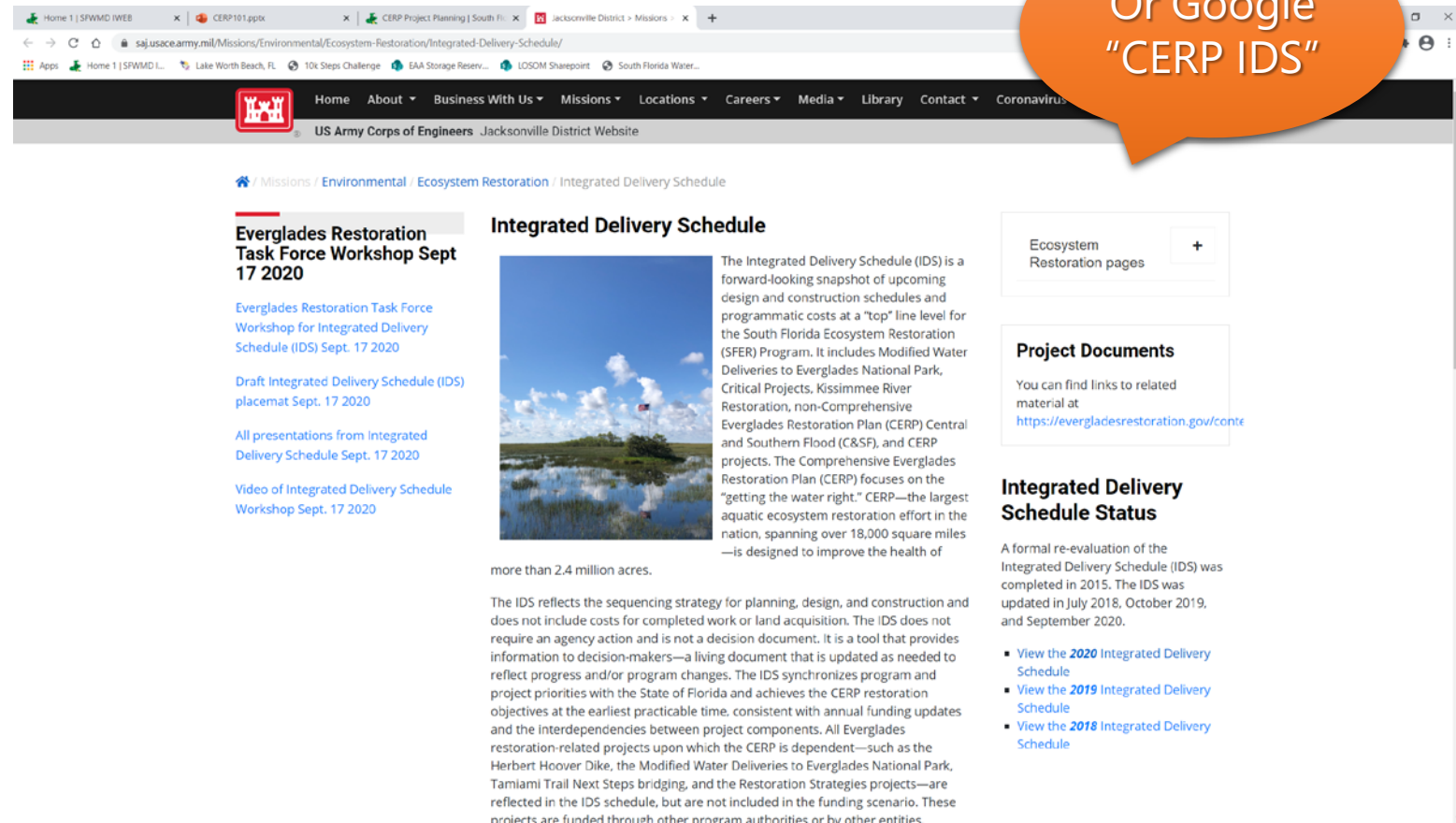
Ecosystem Restoration Planning & Project Management



# Integrated Delivery Schedule

- A “road map” that guides projects and maximizes the benefits of all Comprehensive Everglades Restoration Plan (CERP) efforts
- Communication tool across the program and with public
- Brings predictability to project budgeting and decision-making
- Developed and reviewed each year through an extensive public process with participation of the South Florida Ecosystem Restoration Task Force and its Working Group
- Projects and planning timelines organized so that the beginning of one element coincides with progress or completion of others

<https://www.saj.usace.army.mil/Missions/Environmental/Ecosystem-Restoration/Integrated-Delivery-Schedule/>



The screenshot shows the US Army Corps of Engineers Jacksonville District Website. The breadcrumb trail is: / Missions / Environmental / Ecosystem Restoration / Integrated Delivery Schedule. The main heading is "Integrated Delivery Schedule". Below it is a large image of a wetland landscape. To the left of the image, there is a section titled "Everglades Restoration Task Force Workshop Sept 17 2020" with links to the workshop schedule, draft IDS placemat, presentations, and a video. To the right of the image, there is a text block explaining the IDS as a forward-looking snapshot of upcoming design and construction schedules and programmatic costs at a "top" line level for the South Florida Ecosystem Restoration (SFER) Program. It includes Modified Water Deliveries to Everglades National Park, Critical Projects, Kissimmee River Restoration, non-Comprehensive Everglades Restoration Plan (CERP) Central and Southern Flood (C&SF), and CERP projects. The Comprehensive Everglades Restoration Plan (CERP) focuses on the "getting the water right." CERP—the largest aquatic ecosystem restoration effort in the nation, spanning over 18,000 square miles—is designed to improve the health of more than 2.4 million acres. Below this text, it states that the IDS reflects the sequencing strategy for planning, design, and construction and does not include costs for completed work or land acquisition. It is a tool that provides information to decision-makers—a living document that is updated as needed to reflect progress and/or program changes. The IDS synchronizes program and project priorities with the State of Florida and achieves the CERP restoration objectives at the earliest practicable time, consistent with annual funding updates and the interdependencies between project components. All Everglades restoration-related projects upon which the CERP is dependent—such as the Herbert Hoover Dike, the Modified Water Deliveries to Everglades National Park, Tamiami Trail Next Steps bridging, and the Restoration Strategies projects—are reflected in the IDS schedule, but are not included in the funding scenario. These projects are funded through other program authorities or by other entities.

On the right side of the page, there are two sections: "Ecosystem Restoration pages" with a plus icon, and "Project Documents" with a link to find links to related material at <https://evergladesrestoration.gov/content/>. Below these is a section titled "Integrated Delivery Schedule Status" which states that a formal re-evaluation of the Integrated Delivery Schedule (IDS) was completed in 2015. The IDS was updated in July 2018, October 2019, and September 2020. At the bottom right, there are three links: "View the 2020 Integrated Delivery Schedule", "View the 2019 Integrated Delivery Schedule", and "View the 2018 Integrated Delivery Schedule".

Or Google "CERP IDS"



# IDS Placemat

INTEGRATED DELIVERY SCHEDULE (IDS) UPDATE 2020 - TASK FORCE FINAL													
SOUTH FLORIDA ECOSYSTEM RESTORATION (SFER)   CENTRAL AND SOUTHERN FLORIDA (C&S) COMPREHENSIVE EVERGLADES RESTORATION PLAN													
<p>The Comprehensive Everglades Restoration Plan (CERP) is the largest aquatic ecosystem restoration effort in the nation, spanning over 18,000 square miles, and is designed to provide the health of more than 2.4 million acres. The Integrated Delivery Schedule (IDS) is a forward-looking roadmap of upcoming planning, design, and construction schedules, and programmatic costs at a "top line" level for the South Florida Ecosystem Restoration (SFER) Program, including CERP, Modified Water Deliveries to Everglades National Park, the CERP Projects Program, Kissimmee River Restoration, and non-CERP Central and Southern Florida (C&amp;S) projects.</p> <p>The IDS reflects the sequencing strategy for planning, design, and construction and does not include costs for work completed in other fiscal years or land acquisition. The IDS does not require an agency action and is not a decision document. It is a tool that provides information to decision-makers – a living document that is updated as needed to reflect program and/or program changes. The IDS synchronizes program and project priorities with the State of Florida and achieves the CERP restoration objectives at the earliest practicable time, consistent with funding constraints and the interdependencies between project components.</p> <p>Although non-CERP and foundation projects upon which the CERP is dependent are reflected in the IDS schedule, they are not included in the funding scenario. These projects are funded through other program authorities or by other entities. Restoration projects by others are also not included but are considered during planning.</p> <p>Note: The IDS serves the purpose of the Master Sequencing and Implementation Plan (MSIP) described in the original CERP plan (yellow book). Funding shown for fiscal year 22 (fiscal year, October 1 - September 30) and is only intended, representing appropriate funding levels that would be needed to sustain the work displayed in the IDS for any particular fiscal year. The funding does not represent a commitment by the Administration to budget the amounts shown.</p>													
<p><b>LEGEND</b></p> <p>Non-federal Federal Local Monitoring</p> <p>Does not reflect budgetary development dollars Expected WYB year Project Implementation Report Project Implementation Report with Waiver</p> <p>Design, PPA Execution, Real Estate Acquisition Construction (initiated by award of construction contract) Operational Plan Operational Testing and Monitoring Period</p>													
PROJECT YELLOW BOOK LOCATIONS													
PROJECT													
FISCAL YEAR / COSTS (DOLLARS IN MILLIONS) <sup>1</sup>													
2018 W 2019 2020 W 2021 2022 W 2023 2024 W 2025 2026 W 2027 2028 W 2029 2030 W													
<p><b>NON-CERP AND FOUNDATION PROJECTS</b></p> <p>Planning Estimates Federal Construction Cost (SFER)++ Planning Estimates Non-Federal Construction Cost (SFER)++ Planning Estimates Total Construction Cost (SFER)++</p> <p>2018 W 2019 2020 W 2021 2022 W 2023 2024 W 2025 2026 W 2027 2028 W 2029 2030 W</p> <p>1 107 115 235 250 270 270 1,187 1,193 1,059 954 691 178 155 138</p> <p>2 263 3 463 3 595 5 526</p> <p>3 263 3 463 3 595 5 526</p>													
<p><b>CERP GENERATION 1: AUTHORIZED (WRDA 2007) AND PROJECT PARTNERSHIP AGREEMENT (PPA) EXECUTED</b></p> <p>Planning Estimates Federal Construction Cost (SFER)++ Planning Estimates Non-Federal Construction Cost (SFER)++ Planning Estimates Total Construction Cost (SFER)++</p> <p>2018 W 2019 2020 W 2021 2022 W 2023 2024 W 2025 2026 W 2027 2028 W 2029 2030 W</p> <p>1 107 115 235 250 270 270 1,187 1,193 1,059 954 691 178 155 138</p> <p>2 263 3 463 3 595 5 526</p> <p>3 263 3 463 3 595 5 526</p>													
<p><b>CERP GENERATION 2: AUTHORIZED (WRDA 2014) AND PPA EXECUTED EXCEPT WHERE NOTED</b></p> <p>Planning Estimates Federal Construction Cost (SFER)++ Planning Estimates Non-Federal Construction Cost (SFER)++ Planning Estimates Total Construction Cost (SFER)++</p> <p>2018 W 2019 2020 W 2021 2022 W 2023 2024 W 2025 2026 W 2027 2028 W 2029 2030 W</p> <p>1 107 115 235 250 270 270 1,187 1,193 1,059 954 691 178 155 138</p> <p>2 263 3 463 3 595 5 526</p> <p>3 263 3 463 3 595 5 526</p>													
<p><b>CERP AUTHORIZED (WRDA 2018), CERP EAA AUTHORIZED (WRDA 2018), CERP SOUTH PPA EXECUTED 2020, EAA PPA ANTICIPATED IN 2021, CERP NORTH PPA ANTICIPATED IN 2022</b></p> <p>Planning Estimates Federal Construction Cost (SFER)++ Planning Estimates Non-Federal Construction Cost (SFER)++ Planning Estimates Total Construction Cost (SFER)++</p> <p>2018 W 2019 2020 W 2021 2022 W 2023 2024 W 2025 2026 W 2027 2028 W 2029 2030 W</p> <p>1 107 115 235 250 270 270 1,187 1,193 1,059 954 691 178 155 138</p> <p>2 263 3 463 3 595 5 526</p> <p>3 263 3 463 3 595 5 526</p>													
<p><b>PLANNING PHASE INITIATED AND/OR PROPOSED</b></p> <p>Planning Estimates Federal Construction Cost (SFER)++ Planning Estimates Non-Federal Construction Cost (SFER)++ Planning Estimates Total Construction Cost (SFER)++</p> <p>2018 W 2019 2020 W 2021 2022 W 2023 2024 W 2025 2026 W 2027 2028 W 2029 2030 W</p> <p>1 107 115 235 250 270 270 1,187 1,193 1,059 954 691 178 155 138</p> <p>2 263 3 463 3 595 5 526</p> <p>3 263 3 463 3 595 5 526</p>													

## SOUTH FLORIDA ECOSYSTEM RESTORATION AND 2020 TASK FORCE FINAL

### THE RESTORATION FRAMEWORK COMPONENTS AND PROJECTS

The CERP identified 68 components that can contribute significantly to "getting the water right" and restoring the health of the ecosystem. Through a rigorous planning process, the components described in the CERP "Yellow Book" are combined into 50+ implementable projects that become part of the Integrated Delivery Schedule (IDS).

### OPERATIONS IN SYNC WITH PROJECT DELIVERY

Restoration activities, including operational components recommended in the CERP, occur within the context of the larger, actively operated C&S system. The current C&S Project includes 1,000 miles of canals, 720 miles of levees, and several hundred water control structures providing services to south Florida such as water supply, flood protection, regional groundwater control, preservation of fish and wildlife, navigation, recreation, and prevention of saltwater intrusion.

### System Operating Manuals: The Critical Last Step in Getting the Water Right and Achieving Maximum System-wide Benefits

Operating Manuals are the set of documents that describe how to operate components of the C&S Project and CERP projects to ensure that the goals and purposes of the projects are achieved. Operating Manuals for the CERP consist of a System Operating Manual (SOM) and Project Operating Manuals (POMs). Draft Project Operating Manuals (POMs) are initially developed during the planning phase of project delivery.

The SOM consists of 7 volumes, organized according to geographical regions, that collectively provide a system-wide framework for the operation of components of the C&S Project and CERP projects to ensure that projects function in a coordinated, systematic way.

The CERP Programmatic Regulations require that POMs be updated, as appropriate, for project construction and operational testing and monitoring phases, as well as when relevant CERP and non-CERP components come online. In turn, SOM Volumes are updated to include new or updated POMs. This helps ensure that the goals and purposes of the CERP are achieved.

### EVERGLADES REPORT CARD

The 2019 RECOVER System Status Report provided a Report Card illustrating progress in achieving ecological goals in each RECOVER region, and on a system-wide basis.

Grading reflects the level of vulnerability to further degradation and the ability to provide ecosystem function:

- 80-100 Very Good
- 60-80 Good
- 40-60 Fair
- 20-40 Poor
- 0-20 Very Poor

The system-wide grade for the 2012 - 2017 assessment period was 45%, or Fair. For the Everglades, this is concerning because it means the ecosystem is struggling to support the plants and animals that live there and the natural services they provide to people.

However, many projects and operating manual updates are scheduled for the next ten years that will help improve these conditions. For more information about grading and methodology, visit [evergladesreportcard.org](http://evergladesreportcard.org).

### IDS CONSTRUCTION RELEVANT \* SCHEDULES FOR SOM VOLUME, WATER MANAGEMENT OPERATING CRITERIA (POM, POM, WCP), NEPA, AND MODELING

Building water control manuals (POMs), water control plans (WCPs), and POMs will continue to govern operations until SOM Volumes are finalized.

**SOM VOLUME 2: KISSIMMEE RIVER LAKE ETOPOGGA**

- 12 Lake Okechobee Water Control Plan (WCP) Update (P1)
- 12 Kissimmee River Restoration Project (P2)
- 12 Development of Operational Transition Plan (P3)

**SOM VOLUME 3: LAKE OKECHOBEE - EAA**

- 12 Lake Okechobee - EAA WCP Update (P1)
- 12 Lake Okechobee - EAA WCP Update (P2)
- 12 Lake Okechobee - EAA WCP Update (P3)
- 12 Lake Okechobee - EAA WCP Update (P4)
- 12 Lake Okechobee - EAA WCP Update (P5)
- 12 Lake Okechobee - EAA WCP Update (P6)
- 12 Lake Okechobee - EAA WCP Update (P7)
- 12 Lake Okechobee - EAA WCP Update (P8)
- 12 Lake Okechobee - EAA WCP Update (P9)
- 12 Lake Okechobee - EAA WCP Update (P10)
- 12 Lake Okechobee - EAA WCP Update (P11)
- 12 Lake Okechobee - EAA WCP Update (P12)
- 12 Lake Okechobee - EAA WCP Update (P13)
- 12 Lake Okechobee - EAA WCP Update (P14)
- 12 Lake Okechobee - EAA WCP Update (P15)
- 12 Lake Okechobee - EAA WCP Update (P16)
- 12 Lake Okechobee - EAA WCP Update (P17)
- 12 Lake Okechobee - EAA WCP Update (P18)
- 12 Lake Okechobee - EAA WCP Update (P19)
- 12 Lake Okechobee - EAA WCP Update (P20)
- 12 Lake Okechobee - EAA WCP Update (P21)
- 12 Lake Okechobee - EAA WCP Update (P22)
- 12 Lake Okechobee - EAA WCP Update (P23)
- 12 Lake Okechobee - EAA WCP Update (P24)
- 12 Lake Okechobee - EAA WCP Update (P25)
- 12 Lake Okechobee - EAA WCP Update (P26)
- 12 Lake Okechobee - EAA WCP Update (P27)
- 12 Lake Okechobee - EAA WCP Update (P28)
- 12 Lake Okechobee - EAA WCP Update (P29)
- 12 Lake Okechobee - EAA WCP Update (P30)
- 12 Lake Okechobee - EAA WCP Update (P31)
- 12 Lake Okechobee - EAA WCP Update (P32)
- 12 Lake Okechobee - EAA WCP Update (P33)
- 12 Lake Okechobee - EAA WCP Update (P34)
- 12 Lake Okechobee - EAA WCP Update (P35)
- 12 Lake Okechobee - EAA WCP Update (P36)
- 12 Lake Okechobee - EAA WCP Update (P37)
- 12 Lake Okechobee - EAA WCP Update (P38)
- 12 Lake Okechobee - EAA WCP Update (P39)
- 12 Lake Okechobee - EAA WCP Update (P40)
- 12 Lake Okechobee - EAA WCP Update (P41)
- 12 Lake Okechobee - EAA WCP Update (P42)
- 12 Lake Okechobee - EAA WCP Update (P43)
- 12 Lake Okechobee - EAA WCP Update (P44)
- 12 Lake Okechobee - EAA WCP Update (P45)
- 12 Lake Okechobee - EAA WCP Update (P46)
- 12 Lake Okechobee - EAA WCP Update (P47)
- 12 Lake Okechobee - EAA WCP Update (P48)
- 12 Lake Okechobee - EAA WCP Update (P49)
- 12 Lake Okechobee - EAA WCP Update (P50)
- 12 Lake Okechobee - EAA WCP Update (P51)
- 12 Lake Okechobee - EAA WCP Update (P52)
- 12 Lake Okechobee - EAA WCP Update (P53)
- 12 Lake Okechobee - EAA WCP Update (P54)
- 12 Lake Okechobee - EAA WCP Update (P55)
- 12 Lake Okechobee - EAA WCP Update (P56)
- 12 Lake Okechobee - EAA WCP Update (P57)
- 12 Lake Okechobee - EAA WCP Update (P58)
- 12 Lake Okechobee - EAA WCP Update (P59)
- 12 Lake Okechobee - EAA WCP Update (P60)
- 12 Lake Okechobee - EAA WCP Update (P61)
- 12 Lake Okechobee - EAA WCP Update (P62)
- 12 Lake Okechobee - EAA WCP Update (P63)
- 12 Lake Okechobee - EAA WCP Update (P64)
- 12 Lake Okechobee - EAA WCP Update (P65)
- 12 Lake Okechobee - EAA WCP Update (P66)
- 12 Lake Okechobee - EAA WCP Update (P67)
- 12 Lake Okechobee - EAA WCP Update (P68)
- 12 Lake Okechobee - EAA WCP Update (P69)
- 12 Lake Okechobee - EAA WCP Update (P70)
- 12 Lake Okechobee - EAA WCP Update (P71)
- 12 Lake Okechobee - EAA WCP Update (P72)
- 12 Lake Okechobee - EAA WCP Update (P73)
- 12 Lake Okechobee - EAA WCP Update (P74)
- 12 Lake Okechobee - EAA WCP Update (P75)
- 12 Lake Okechobee - EAA WCP Update (P76)
- 12 Lake Okechobee - EAA WCP Update (P77)
- 12 Lake Okechobee - EAA WCP Update (P78)
- 12 Lake Okechobee - EAA WCP Update (P79)
- 12 Lake Okechobee - EAA WCP Update (P80)
- 12 Lake Okechobee - EAA WCP Update (P81)
- 12 Lake Okechobee - EAA WCP Update (P82)
- 12 Lake Okechobee - EAA WCP Update (P83)
- 12 Lake Okechobee - EAA WCP Update (P84)
- 12 Lake Okechobee - EAA WCP Update (P85)
- 12 Lake Okechobee - EAA WCP Update (P86)
- 12 Lake Okechobee - EAA WCP Update (P87)
- 12 Lake Okechobee - EAA WCP Update (P88)
- 12 Lake Okechobee - EAA WCP Update (P89)
- 12 Lake Okechobee - EAA WCP Update (P90)
- 12 Lake Okechobee - EAA WCP Update (P91)
- 12 Lake Okechobee - EAA WCP Update (P92)
- 12 Lake Okechobee - EAA WCP Update (P93)
- 12 Lake Okechobee - EAA WCP Update (P94)
- 12 Lake Okechobee - EAA WCP Update (P95)
- 12 Lake Okechobee - EAA WCP Update (P96)
- 12 Lake Okechobee - EAA WCP Update (P97)
- 12 Lake Okechobee - EAA WCP Update (P98)
- 12 Lake Okechobee - EAA WCP Update (P99)
- 12 Lake Okechobee - EAA WCP Update (P100)

**SOM VOLUME 4: WCA5 - ENP-SDCS (COP-P1-P7)**

- 12 WCA5 - ENP-SDCS (COP-P1-P7) Update (P1)
- 12 WCA5 - ENP-SDCS (COP-P1-P7) Update (P2)
- 12 WCA5 - ENP-SDCS (COP-P1-P7) Update (P3)
- 12 WCA5 - ENP-SDCS (COP-P1-P7) Update (P4)
- 12 WCA5 - ENP-SDCS (COP-P1-P7) Update (P5)
- 12 WCA5 - ENP-SDCS (COP-P1-P7) Update (P6)
- 12 WCA5 - ENP-SDCS (COP-P1-P7) Update (P7)
- 12 WCA5 - ENP-SDCS (COP-P1-P7) Update (P8)
- 12 WCA5 - ENP-SDCS (COP-P1-P7) Update (P9)
- 12 WCA5 - ENP-SDCS (COP-P1-P7) Update (P10)
- 12 WCA5 - ENP-SDCS (COP-P1-P7) Update (P11)
- 12 WCA5 - ENP-SDCS (COP-P1-P7) Update (P12)
- 12 WCA5 - ENP-SDCS (COP-P1-P7) Update (P13)
- 12 WCA5 - ENP-SDCS (COP-P1-P7) Update (P14)
- 12 WCA5 - ENP-SDCS (COP-P1-P7) Update (P15)
- 12 WCA5 - ENP-SDCS (COP-P1-P7) Update (P16)
- 12 WCA5 - ENP-SDCS (COP-P1-P7) Update (P17)
- 12 WCA5 - ENP-SDCS (COP-P1-P7) Update (P18)
- 12 WCA5 - ENP-SDCS (COP-P1-P7) Update (P19)
- 12 WCA5 - ENP-SDCS (COP-P1-P7) Update (P20)
- 12 WCA5 - ENP-SDCS (COP-P1-P7) Update (P21)
- 12 WCA5 - ENP-SDCS (COP-P1-P7) Update (P22)
- 12 WCA5 - ENP-SDCS (COP-P1-P7) Update (P23)
- 12 WCA5 - ENP-SDCS (COP-P1-P7) Update (P24)
- 12 WCA5 - ENP-SDCS (COP-P1-P7) Update (P25)
- 12 WCA5 - ENP-SDCS (COP-P1-P7) Update (P26)
- 12 WCA5 - ENP-SDCS (COP-P1-P7) Update (P27)
- 12 WCA5 - ENP-SDCS (COP-P1-P7) Update (P28)
- 12 WCA5 - ENP-SDCS (COP-P1-P7) Update (P29)
- 12 WCA5 - ENP-SDCS (COP-P1-P7) Update (P30)
- 12 WCA5 - ENP-SDCS (COP-P1-P7) Update (P31)
- 12 WCA5 - ENP-SDCS (COP-P1-P7) Update (P32)
- 12 WCA5 - ENP-SDCS (COP-P1-P7) Update (P33)
- 12 WCA5 - ENP-SDCS (COP-P1-P7) Update (P34)
- 12 WCA5 - ENP-SDCS (COP-P1-P7) Update (P35)
- 12 WCA5 - ENP-SDCS (COP-P1-P7) Update (P36)
- 12 WCA5 - ENP-SDCS (COP-P1-P7) Update (P37)
- 12 WCA5 - ENP-SDCS (COP-P1-P7) Update (P38)
- 12 WCA5 - ENP-SDCS (COP-P1-P7) Update (P39)
- 12 WCA5 - ENP-SDCS (COP-P1-P7) Update (P40)
- 12 WCA5 - ENP-SDCS (COP-P1-P7) Update (P41)
- 12 WCA5 - ENP-SDCS (COP-P1-P7) Update (P42)
- 12 WCA5 - ENP-SDCS (COP-P1-P7) Update (P43)
- 12 WCA5 - ENP-SDCS (COP-P1-P7) Update (P44)
- 12 WCA5 - ENP-SDCS (COP-P1-P7) Update (P45)
- 12 WCA5 - ENP-SDCS (COP-P1-P7) Update (P46)
- 12 WCA5 - ENP-SDCS (COP-P1-P7) Update (P47)
- 12 WCA5 - ENP-SDCS (COP-P1-P7) Update (P48)
- 12 WCA5 - ENP-SDCS (COP-P1-P7) Update (P49)
- 12 WCA5 - ENP-SDCS (COP-P1-P7) Update (P50)
- 12 WCA5 - ENP-SDCS (COP-P1-P7) Update (P51)
- 12 WCA5 - ENP-SDCS (COP-P1-P7) Update (P52)
- 12 WCA5 - ENP-SDCS (COP-P1-P7) Update (P53)
- 12 WCA5 - ENP-SDCS (COP-P1-P7) Update (P54)
- 12 WCA5 - ENP-SDCS (COP-P1-P7) Update (P55)
- 12 WCA5 - ENP-SDCS (COP-P1-P7) Update (P56)
- 12 WCA5 - ENP-SDCS (COP-P1-P7) Update (P57)
- 12 WCA5 - ENP-SDCS (COP-P1-P7) Update (P58)
- 12 WCA5 - ENP-SDCS (COP-P1-P7) Update (P59)
- 12 WCA5 - ENP-SDCS (COP-P1-P7) Update (P60)
- 12 WCA5 - ENP-SDCS (COP-P1-P7) Update (P61)
- 12 WCA5 - ENP-SDCS (COP-P1-P7) Update (P62)
- 12 WCA5 - ENP-SDCS (COP-P1-P7) Update (P63)
- 12 WCA5 - ENP-SDCS (COP-P1-P7) Update (P64)
- 12 WCA5 - ENP-SDCS (COP-P1-P7) Update (P65)
- 12 WCA5 - ENP-SDCS (COP-P1-P7) Update (P66)
- 12 WCA5 - ENP-SDCS (COP-P1-P7) Update (P67)
- 12 WCA5 - ENP-SDCS (COP-P1-P7) Update (P68)
- 12 WCA5 - ENP-SDCS (COP-P1-P7) Update (P69)
- 12 WCA5 - ENP-SDCS (COP-P1-P7) Update (P70)
- 12 WCA5 - ENP-SDCS (COP-P1-P7) Update (P71)
- 12 WCA5 - ENP-SDCS (COP-P1-P7) Update (P72)
- 12 WCA5 - ENP-SDCS (COP-P1-P7) Update (P73)
- 12 WCA5 - ENP-SDCS (COP-P1-P7) Update (P74)
- 12 WCA5 - ENP-SDCS (COP-P1-P7) Update (P75)
- 12 WCA5 - ENP-SDCS (COP-P1-P7) Update (P76)
- 12 WCA5 - ENP-SDCS (COP-P1-P7) Update (P77)
- 12 WCA5 - ENP-SDCS (COP-P1-P7) Update (P78)
- 12 WCA5 - ENP-SDCS (COP-P1-P7) Update (P79)
- 12 WCA5 - ENP-SDCS (COP-P1-P7) Update (P80)
- 12 WCA5 - ENP-SDCS (COP-P1-P7) Update (P81)
- 12 WCA5 - ENP-SDCS (COP-P1-P7) Update (P82)
- 12 WCA5 - ENP-SDCS (COP-P1-P7) Update (P83)
- 12 WCA5 - ENP-SDCS (COP-P1-P7) Update (P84)
- 12 WCA5 - ENP-SDCS (COP-P1-P7) Update (P85)
- 12 WCA5 - ENP-SDCS (COP-P1-P7) Update (P86)
- 12 WCA5 - ENP-SDCS (COP-P1-P7) Update (P87)
- 12 WCA5 - ENP-SDCS (COP-P1-P7) Update (P88)
- 12 WCA5 - ENP-SDCS (COP-P1-P7) Update (P89)
- 12 WCA5 - ENP-SDCS (COP-P1-P7) Update (P90)
- 12 WCA5 - ENP-SDCS (COP-P1-P7) Update (P91)
- 12 WCA5 - ENP-SDCS (COP-P1-P7) Update (P92)
- 12 WCA5 - ENP-SDCS (COP-P1-P7) Update (P93)
- 12 WCA5 - ENP-SDCS (COP-P1-P7) Update (P94)
- 12 WCA5 - ENP-SDCS (COP-P1-P7) Update (P95)
- 12 WCA5 - ENP-SDCS (COP-P1-P7) Update (P96)
- 12 WCA5 - ENP-SDCS (COP-P1-P7) Update (P97)
- 12 WCA5 - ENP-SDCS (COP-P1-P7) Update (P98)
- 12 WCA5 - ENP-SDCS (COP-P1-P7) Update (P99)
- 12 WCA5 - ENP-SDCS (COP-P1-P7) Update (P100)

**SOM VOLUME 5: EAST COAST CANALS**

- 12 East Coast Canals (COP-P1-P7) Update (P1)
- 12 East Coast Canals (COP-P1-P7) Update (P2)
- 12 East Coast Canals (COP-P1-P7) Update (P3)
- 12 East Coast Canals (COP-P1-P7) Update (P4)
- 12 East Coast Canals (COP-P1-P7) Update (P5)
- 12 East Coast Canals (COP-P1-P7) Update (P6)
- 12 East Coast Canals (COP-P1-P7) Update (P7)
- 12 East Coast Canals (COP-P1-P7) Update (P8)
- 12 East Coast Canals (COP-P1-P7) Update (P9)
- 12 East Coast Canals (COP-P1-P7) Update (P10)
- 12 East Coast Canals (COP-P1-P7) Update (P11)
- 12 East Coast Canals (COP-P1-P7) Update (P12)
- 12 East Coast Canals (COP-P1-P7) Update (P13)
- 12 East Coast Canals (COP-P1-P7) Update (P14)
- 12 East Coast Canals (COP-P1-P7) Update (P15)
- 12 East Coast Canals (COP-P1-P7) Update (P16)
- 12 East Coast Canals (COP-P1-P7) Update (P17)
- 12 East Coast Canals (COP-P1-P7) Update (P18)
- 12 East Coast Canals (COP-P1-P7) Update (P19)
- 12 East Coast Canals (COP-P1-P7) Update (P20)
- 12 East Coast Canals (COP-P1-P7) Update (P21)
- 12 East Coast Canals (COP-P1-P7) Update (P22)
- 12 East Coast Canals (COP-P1-P7) Update (P23)
- 12 East Coast Canals (COP-P1-P7) Update (P24)
- 12 East Coast Canals (COP-P1-P7) Update (P25)
- 12 East Coast Canals (COP-P1-P7) Update (P26)
- 12 East Coast Canals (COP-P1-P7) Update (P27)
- 12 East Coast Canals (COP-P1-P7) Update (P28)
- 12 East Coast Canals (COP-P1-P7) Update (P29)
- 12 East Coast Canals (COP-P1-P7) Update (P30)
- 12 East Coast Canals (COP-P1-P7) Update (P31)
- 12 East Coast Canals (COP-P1-P7) Update (P32)
- 12 East Coast Canals (COP-P1-P7) Update (P33)
- 12 East Coast Canals (COP-P1-P7) Update (P34)
- 12 East Coast Canals (COP-P1-P7) Update (P35)
- 12 East Coast Canals (COP-P1-P7) Update (P36)
- 12 East Coast Canals (COP-P1-P7) Update (P37)
- 12 East Coast Canals (COP-P1-P7) Update (P38)
- 12 East Coast Canals (COP-P1-P7) Update (P39)
- 12 East Coast Canals (COP-P1-P7) Update (P40)
- 12 East Coast Canals (COP-P1-P7) Update (P41)
- 12 East Coast Canals (COP-P1-P7) Update (P42)
- 12 East Coast Canals (COP-P1-P7) Update (P43)
- 12 East Coast Canals (COP-P1-P7) Update (P44)
- 12 East Coast Canals (COP-P1-P7) Update (P45)
- 12 East Coast Canals (COP-P1-P7) Update (P46)
- 12 East Coast Canals (COP-P1-P7) Update (P47)
- 12 East Coast Canals (COP-P1-P7) Update (P48)
- 12 East Coast Canals (COP-P1-P7) Update (P49)
- 12 East Coast Canals (COP-P1-P7) Update (P50)
- 12 East Coast Canals (COP-P1-P7) Update (P51)
- 12 East Coast Canals (COP-P1-P7) Update (P52)
- 12 East Coast Canals (COP-P1-P7) Update (P53)
- 12 East Coast Canals (COP-P1-P7) Update (P54)
- 12 East Coast Canals (COP-P1-P7) Update (P55)
- 12 East Coast Canals (COP-P1-P7) Update (P56)
- 12 East Coast Canals (COP-P1-P7) Update (P57)
- 12 East Coast Canals (COP-P1-P7) Update (P58)
- 12 East Coast Canals (COP-P1-P7) Update (P59)
- 12 East Coast Canals (COP-P1-P7) Update (P60)
- 12 East Coast Canals (COP-P1-P7) Update (P61)
- 12 East Coast Canals (COP-P1-P7) Update (P62)
- 12 East Coast Canals (COP-P1-P7) Update (P63)
- 12 East Coast Canals (COP-P1-P7) Update (P64)
- 12 East Coast Canals (COP-P1-P7) Update (P65)
- 12 East Coast Canals (COP-P1-P7) Update (P66)
- 12 East Coast Canals (COP-P1-P7) Update (P67)
- 12 East Coast Canals (COP-P1-P7) Update (P68)
- 12 East Coast Canals (COP-P1-P7) Update (P69)
- 12 East Coast Canals (COP-P1-P7) Update (P70)
- 12 East Coast Canals (COP-P1-P7) Update (P71)
- 12 East Coast Canals (COP-P1-P7) Update (P72)
- 12 East Coast Canals (COP-P1-P7) Update (P73)
- 12 East Coast Canals (COP-P1-P7) Update (P74)
- 12 East Coast Canals (COP-P1-P7) Update (P75)
- 12 East Coast Canals (COP-P1-P7) Update (P76)
- 12 East Coast Canals (COP-P1-P7) Update (P77)
- 12 East Coast Canals (COP-P1-P7) Update (P78)
- 12 East Coast Canals (COP-P1-P7) Update (P79)
- 12 East Coast Canals (COP-P1-P7) Update (P80)
- 12 East Coast Canals (COP-P1-P7) Update (P81)
- 12 East Coast Canals (COP-P1-P7) Update (P82)
- 12 East Coast Canals (COP-P1-P7) Update (P83)
- 12 East Coast Canals (COP-P1-P7) Update (P84)
- 12 East Coast Canals (COP-P1-P7) Update (P85)
- 12 East Coast Canals (COP-P1-P7) Update (P86)
- 12 East Coast Canals (COP-P1-P7) Update (P87)
- 12 East Coast Canals (COP-P1-P7) Update (P88)
- 12 East Coast Canals (COP-P1-P7) Update (P89)
- 12 East Coast Canals (COP-P1-P7) Update (P90)
- 12 East Coast Canals (COP-P1-P7) Update (P91)
- 12 East Coast Canals (COP-P1-P7) Update (P92)
- 12 East Coast Canals (COP-P1-P7) Update (P93)
- 12 East Coast Canals (COP-P1-P7) Update (P94)
- 12 East Coast Canals (COP-P1-P7) Update (P95)
- 12 East Coast Canals (COP-P1-P7) Update (P96)
- 12 East Coast Canals (COP-P1-P7) Update (P97)
- 12 East Coast Canals (COP-P1-P7) Update (P98)
- 12 East Coast Canals (COP-P1



# Purpose, Investments, Project Locator and Legend

## SOUTH FLORIDA ECOSYSTEM RESTORATION (SFER) | CENTRAL AND SOUTHERN FLORIDA (C&SF) COMPREHENSIVE EVERGLADES RESTORATION PLAN

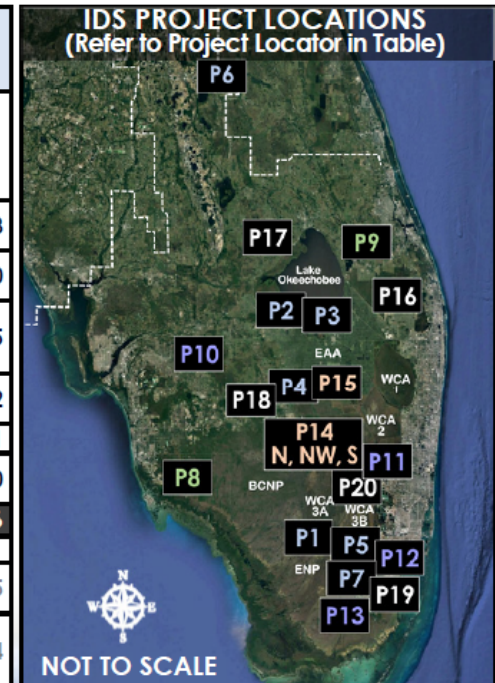
The **Comprehensive Everglades Restoration Plan (CERP)** is the largest aquatic ecosystem restoration effort in the nation, spanning over 18,000 square miles, and is designed to improve the health of more than 2.4 million acres. The Integrated Delivery Schedule (IDS) is a forward-looking snapshot of upcoming planning, design, and construction schedules and programmatic costs at a "top" line level for the South Florida Ecosystem Restoration (SFER) Program – including CERP, Modified Water Deliveries to Everglades National Park, the Critical Projects Program, Kissimmee River Restoration, and non-CERP Central and Southern Florida (C&SF) projects.

The IDS reflects the sequencing strategy for planning, design, and construction and does not include costs for work completed in other fiscal years or land acquisition. The IDS does not require an agency action and is not a decision document. It is a tool that provides information to decision-makers – a living document that is updated as needed to reflect progress and/or program changes. The IDS synchronizes program and project priorities with the State of Florida and achieves the CERP restoration objectives at the earliest practicable time, consistent with funding constraints and the interdependencies between project components.

Although non-CERP and Foundation projects upon which the CERP is dependent are reflected in the IDS schedule, they are not included in the funding scenario. These projects are funded through other program authorities or by other entities. Restoration projects by others are also not included but are considered during planning.

Note: The IDS serves the purpose of the Master Sequencing and Implementation Plan (MISP) described in the original CERP plan (Yellow Book). Funding shown for Fiscal Year 22 (Fiscal Year, October 1- September 30) and beyond is only notional, representing approximate funding levels that would be needed to sustain the work displayed in the IDS for any particular fiscal year. The funding does not represent a commitment by the Administration to budget the amounts shown.

SOUTH FLORIDA ECOSYSTEM RESTORATION (SFER) INVESTMENT THROUGH FY2019 (Millions)					
	FEDERAL			NON-FEDERAL MULTIPLE AGENCIES	GRAND TOTAL
	USACE	DOI	TOTAL		
Modified Water Deliveries to ENP	\$ 77.5	\$ 317.3	\$ 394.8	-	\$ 394.8
Critical Projects	\$ 88.9	-	\$ 88.9	\$ 88.2	\$ 177.0
Kissimmee River Restoration	\$ 388.3	-	\$ 388.3	\$ 202.2	\$ 590.5
C&SF Non-CERP	\$ 771.8	\$ 51.8	\$ 823.6	\$ 215.6	\$ 1,039.2
C&SF CERP	\$ 1,301.6	\$ 112.5	\$ 1,414.1	\$ 1,667.0	\$ 3,081.1
C&SF CERP, to be credited	-	-	-	\$ 903.0	\$ 903.0
<b>TOTAL SFER</b>	<b>\$ 2,628.0</b>	<b>\$ 481.6</b>	<b>\$ 3,109.6</b>	<b>\$ 3,076.0</b>	<b>\$ 6,185.6</b>
Herbert Hoover Dike	\$ 1,499.5	-	\$ 1,499.5	\$ 100.0	\$ 1,599.5
Restoration Strategies and ECP	-	-	-	\$ 2,038.4	\$ 2,038.4



### LEGEND

- Non-federal
- Federal
- Fiscal Closeout
- Monitoring

- ++ Does not reflect budgetary development dollars
- W Expected WRDA year
- XXXX● Project Implementation Report
- XXXX● Project Implementation Report with Waiver

- Design, PPA Execution, Real Estate Acquisition
- Construction (Initiated by award of construction contract)
- Operational Plan
- Operational Testing and Monitoring Period

# IDS 2020: Planning Estimates of Total CERP Construction Cost

Project	Design & Construction Costs in Millions	FISCAL YEAR (dollars in millions) <sup>3</sup>												
		2018 W	2019	2020 W	2021	2022 W	2023	2024 W	2025	2026 W	2027	2028 W	2029	2030 W
Planning Estimates Federal Construction Cost (SFER)++		\$ 109	\$ 110	\$ 235	\$ 250	\$710	\$1,187	\$1,193	\$1,059	\$956	\$691	\$178	\$155	\$138
Planning Estimates Non-Federal Construction Cost (SFER)++		\$ 154	\$ 293	\$ 363	\$ 258									
Planning Estimates Total Construction Cost (SFER)++		\$ 263	\$ 403	\$ 598	\$ 508									

Estimate for Total CERP Construction is ~\$7.4 billion from 2020 to 2030



# IDS 2020: Non-CERP and Foundation Projects

Project		2018 W	2019	2020 W	2021	2022 W	2023	2024 W	2025	2026 W	2027	2028 W	2029	2030 W
Modified Water Deliveries to Everglades National Park <sup>1,2</sup> (complete)	Non-CERP & Foundation	—●	●○○○○	○○○○●										
Herbert Hoover Dike <sup>1</sup>		—	—	—	—	—●								
Lake Okeechobee System Operating Manual <sup>1</sup>			●○○○○	○○○○○	○○○○○	○○○○●								
Restoration Strategies <sup>1</sup>		—	—	—	—	—	—	—	—●					
Tamiami Trail Next Steps Phase 2 <sup>1</sup>			●●●●●	●●●●●	—	—	—	—	—●	●◇◇◇◇●				
Kissimmee River Restoration Construction / Post Construction Monitoring		—	—	—	—●	●△△△△	△△△△△	△△△△△	△△△△△●	●□□□□●				
Kissimmee River Restoration Monitoring/Development of Operational Transition Plan					●△△△△	△△△△△	△△△△△	△△△△△	△△△△△●	●□□□□●				
C-111 South Dade Construction <sup>2</sup> (complete)		—	—	●○○○○	●□□□□	□□□□●								
C-111 South Dade - S-332 B Pump Station Replacement			●XXXX	XXXXX●	●●●●●	●●●●●	●—	—	—●	●◇◇◇◇●				
C-111 South Dade - S-332 C Pump Station Replacement			●XXXX	XXXXX●	●●●●●	●●●●●	●—	—	—●	●◇◇◇◇●				

## LEGEND

—	Non-federal
—	Federal
□□□□●	Fiscal Closeout
△△△△●	Monitoring

++	Does not reflect budgetary development dollars
W	Expected WRDA year
●XXXX●	Project Implementation Report
●XXXX●	Project Implementation Report with Waiver

●●●●●	Design, PPA Execution, Real Estate Acquisition
●—●	Construction (Initiated by award of construction contract)
○○○○●	Operational Plan
◇◇◇◇●	Operational Testing and Monitoring Period



HHD Rehabilitation



Tamiami Trail Bridge



Kissimmee River Restoration

## IDS 2020: CERP Generation 1, WRDA 2007

Project		2018 W	2019	2020 W	2021	2022 W	2023	2024 W	2025	2026 W	2027	2028 W	2029	2030 W
Picayune Strand Restoration	CERP Generation 1 (authorized in 2007 WRDA)								●□□□□□	□□□□□●				
Faka Union Pump Station (complete)		◇◇◇◇◇●												
Miller Pump Station (complete)		—●◇◇◇◇◇◇	◇◇◇◇◇◇	◇◇◇◇◇◇●										
Flood Protection Features - Conveyance			●●●●●●	●●●●●●	—	—	—●	●◇◇◇◇●						
Flood Protection Features - Levee			●●●●●●	●●●●●●	—	—	—●							
Road removal			●—	—	—●									
Canal plugging					●●●●●●	●—	—	—●						
Indian River Lagoon-South														
C-44 Reservoir		—	—	—	—●	●◇◇◇◇●								
C-44 STA & Pump Station		—	—	—●	●◇◇◇◇◇	◇◇◇◇◇●								
C-23/24 Reservoir North		●●●●●●	●●●●●●	●●●●●●	●●●●●●	●●●●●●	—	—	—	—	—	—●	●◇◇◇◇●	
C-23/24 Reservoir South				●●●●●●	●●●●●●	●●●●●●	●●●●●●	●●●●●●	—	—	—	—	—	—●
C-23/24 STA				●●●●●●	●●●●●●	—	—	—	—●	●◇◇◇◇●				
C-25 Reservoir						●●●●●●	●●●●●●	●—	—	—	—●	●◇◇◇◇●		
C-25 STA								●●●●●●	●●●●●●	●●●●●●	—	—	—	—●
C-23/C-44 Interconnect				●●●●●●	●●●●●●	●●●●●●	—	●◇◇◇◇●						
Natural Water Quality Storage Areas, Muck Removal and Artificial Habitat Creation (Phase 2) - PACR and PPA					●●●●●●	●●●●●●	●●●●●●							

## LEGEND

■ Non-federal  
 ■ Federal  
 □ Fiscal Closeout  
 △ Monitoring

++ Does not reflect budgetary development dollars  
 W Expected WRDA year  
 ●XXXX● Project Implementation Report  
 ●XXXX● Project Implementation Report with Waiver

●●●●● Design, PPA Execution, Real Estate Acquisition  
 ●—● Construction (Initiated by award of construction contract)  
 ○○○○ Operational Plan  
 ◇◇◇◇ Operational Testing and Monitoring Period





## IDS 2020: CERP Generation 2, WRDA 2014

Project		2018 W	2019	2020 W	2021	2022 W	2023	2024 W	2025	2026 W	2027	2028 W	2029	2030 W
Caloosahatchee River (C-43) West Basin Storage	CERP Generation 2 (Authorized in 2014 WRDA)										●□□□□	□□□□●		
Pump Station and Reservoir		■	■	■	■	■	■●	●○○○○○	○○○○○●					
Broward County Water Preserve Areas														
Mitigation Area A Berm (complete)		■	■●											
C-11 Impoundment		●●●●●	●●●●●	●●●●●	●●●●●	●●●●●	■	■	■	■	■●	●○○○○○	○○○○○●	
WCA 3A & 3B Seepage Management							●●●●●	●●●●●	●●●●●	●●●●●	■	●○○○○○		
C-9 Impoundment										●●●●●	●●●●●	●●●●●	●●●●●	■
Biscayne Bay Coastal Wetlands Phase 1										●□□□□	□□□□●			
L-31 East Flow-way S-709 Pump Station (PS)		●●●●●	●●●●●	●●●●●	■	■	●○○○○○							
L-31 East Flow-way S-705 PS			●●●●●	●●●●●	■	■	■	●○○○○○						
L-31 East Flow-way S-703 PS, S-710 PS, S-711 PS, and C-711W Seepage Canal			●●●●●	●●●●●	●●●●●	■	■	■	●○○○○○					
Cutler Wetlands				●●●●●	●●●●●	■	■	■	●○○○○○					
C-111 Spreader Canal Western Project (Requires PPA - To Be Reconciled in parallel to BBSEER)								●●●●●	●□□□□	□□□□●				

## LEGEND

■	Non-federal
■	Federal
□□□□●	Fiscal Closeout
△△△△●	Monitoring

++	Does not reflect budgetary development dollars
W	Expected WRDA year
●XXXX●	Project Implementation Report
●XXXX●	Project Implementation Report with Waiver

●●●●●	Design, PPA Execution, Real Estate Acquisition
●●●●●	Construction (Initiated by award of construction contract)
○○○○○	Operational Plan
○○○○○	Operational Testing and Monitoring Period



## IDS 2020: Central Everglades Planning Project, WRDA 2016

Project	2018 W	2019	2020 W	2021	2022 W	2023	2024 W	2025	2026 W	2027	2028 W	2029	2030 W
<b>Central Everglades Planning Project and Everglades Agricultural Area Project (2016 WRDA)</b>													
Decomp Physical Model (work performed under Master Design Agreement)	●●●●●●	●●●●●●	●●●●●●	●●●●●●									
<b>CEPP South: Additional outlet structures needed to move more water south</b>													
Validation Report		●●●●●●											
Remove Old Tamiami Trail (ENP Prepared NEPA)		●●●●●●	●●●●●●	●●●●●●	●●●●●●								
Structures S-631, S-632, S-633 & gap in L-67C Levee S Spoil Removal		●●●●●●	●●●●●●	●●●●●●	●●●●●●	●●●●●●	●●●●●●	●●●●●●	●●●●●●				
Increase S-356 Pump Station			●●●●●●	●●●●●●	●●●●●●	●●●●●●	●●●●●●	●●●●●●	●●●●●●	●●●●●●	●●●●●●		
Spillway S-355W			●●●●●●	●●●●●●	●●●●●●	●●●●●●	●●●●●●	●●●●●●	●●●●●●	●●●●●●	●●●●●●		
Structure S-333N	●●●●●●	●●●●●●	●●●●●●	●●●●●●	●●●●●●								
Removal L-67C & L-67 Ext, Construct L-67D Levee and gap in L-67C Levee N					●●●●●●	●●●●●●	●●●●●●	●●●●●●	●●●●●●	●●●●●●	●●●●●●		
Removal L-29 Levee & Backfill L-67 Extension						●●●●●●	●●●●●●	●●●●●●	●●●●●●	●●●●●●	●●●●●●	●●●●●●	
<b>CEPP North: Inflow facilities needed to restore northern WCA-3A and move additional water south to Everglades</b>													
Validation Report				●●●●●●	●●●●●●								
L-4 Degrade & Pump Station S-630				●●●●●●	●●●●●●	●●●●●●	●●●●●●	●●●●●●	●●●●●●	●●●●●●	●●●●●●		
S-8 Pump Station Modifications				●●●●●●	●●●●●●	●●●●●●	●●●●●●	●●●●●●	●●●●●●	●●●●●●	●●●●●●		
L-6 Diversion				●●●●●●	●●●●●●	●●●●●●	●●●●●●	●●●●●●	●●●●●●	●●●●●●	●●●●●●		
Miami Canal Backfill/Tree Islands					●●●●●●	●●●●●●	●●●●●●	●●●●●●	●●●●●●	●●●●●●	●●●●●●		
L-5 Canal Improvements					●●●●●●	●●●●●●	●●●●●●	●●●●●●	●●●●●●	●●●●●●	●●●●●●		
<b>CEPP New Water: Moves New Water South, Stores It, and Treats It Before Going to the Everglades</b>													
Validation Report				●●●●●●	●●●●●●								
Seepage Barrier L-31N						●●●●●●	●●●●●●	●●●●●●	●●●●●●	●●●●●●	●●●●●●		

## LEGEND

■	Non-federal
■	Federal
●●●●●●	Fiscal Closeout
△△△△△△	Monitoring

++	Does not reflect budgetary development dollars
W	Expected WRDA year
●XXXX●	Project Implementation Report
●XXXX●	Project Implementation Report with Waiver

●●●●●●	Design, PPA Execution, Real Estate Acquisition
●●●●●●	Construction (Initiated by award of construction contract)
●●●●●●	Operational Plan
●●●●●●	Operational Testing and Monitoring Period



# IDS 2020: CEPP Everglades Agricultural Area Phase, WRDA 2018

Project	2018 W	2019	2020 W	2021	2022 W	2023	2024 W	2025	2026 W	2027	2028 W	2029	2030 W
CERP EAA: Moves New Water South, Stores It, and Treats It Before Going to the Everglades (WRDA 2018)													
CERP EAA Follow Up Report (Section 1308b, WRDA18)		●●●●●●	●●●●●●										
EAA Reservoir - A-2 STA		●●●●●●	●●●●●●	●●●●●●	●●●●●●	●●●●●●	●●●●●●	●●●●●●					
EAA Reservoir - Canal Conveyance Improvements to North New River and Miami River Canals				●●●●●●	●●●●●●	●●●●●●	●●●●●●	●●●●●●					
EAA Reservoir - Seepage Canal (8.2 miles)			●●●●●●	●●●●●●	●●●●●●	●●●●●●	●●●●●●	●●●●●●					
EAA Reservoir - Inflow/Outflow Canal and Gated Spillway				●●●●●●	●●●●●●	●●●●●●	●●●●●●	●●●●●●	●●●●●●	●●●●●●			
EAA Reservoir - Cutoff Wall, Outlet Work Structures, & Embankment ●			●●●●●●	●●●●●●	●●●●●●	●●●●●●	●●●●●●	●●●●●●	●●●●●●	●●●●●●	●●●●●●	●●●●●●	
EAA Reservoir - Inflow Pump Station ●			●●●●●●	●●●●●●	●●●●●●	●●●●●●	●●●●●●	●●●●●●	●●●●●●	●●●●●●	●●●●●●	●●●●●●	

## LEGEND

■	Non-federal
■	Federal
□	Fiscal Closeout
△	Monitoring

++	Does not reflect budgetary development dollars
W	Expected WRDA year
●XXXX●	Project Implementation Report
●XXXX●	Project Implementation Report with Waiver

●●●●●●	Design, PPA Execution, Real Estate Acquisition
●●●●●●	Construction (Initiated by award of construction contract)
○●●●●○	Operational Plan
○●●●●○	Operational Testing and Monitoring Period


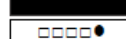
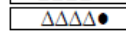

South Florida Water Management District @SPWMD - Sep 3  
[ICYMI] #EAAReservoir Project milestone: "With the help of 4,000 pounds of explosives, we took another major step to reduce harmful estuary discharges to our estuaries and get more clean water in the #Everglades." -SFWMD Chairman @ChaunceyGoss. Learn more: [sfwmd.link/2FM4oAO](https://sfwmd.link/2FM4oAO)

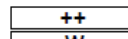
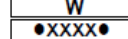
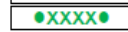



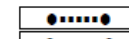
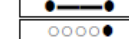
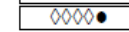

# IDS 2020: Planning Projects

Project	2018 W	2019	2020 W	2021	2022 W	2023	2024 W	2025	2026 W	2027	2028 W	2029	2030 W
Loxahatchee River Watershed Restoration Project	XXXXXX	XXXXXX	XXXXXX●		Anticipate Authorization in WRDA 2020. Construction and funding TBD.								
Lake Okeechobee Watershed Restoration Project	XXXXXX	XXXXXX	XXXXXX	XXXXXX●		Anticipate Authorization in WRDA 2022. Construction and funding TBD.							
Western Everglades Restoration Project	XXXXXX	XXXXXX	XXXXXX	XXXXXX	XXXXXX●	Anticipate Authorization in WRDA 2022. Construction and funding TBD.							
Biscayne Bay Southeastern Everglades Ecosystem Restoration (BBSEER)			●XX	XXXXXX	XXXXXX	XXXXXX	XXXXXX●	Anticipate Authorization in WRDA 2026. Construction & funding TBD.					
Southern Everglades						●XXXXX	XXXXXX	XXXXXX	XXXXXX●	Anticipate Authorization in WRDA 2026. Construction & funding TBD.			

## LEGEND

 Non-federal  
 Federal  
 Fiscal Closeout  
 Monitoring

 Does not reflect budgetary development dollars  
 Expected WRDA year  
 Project Implementation Report  
 Project Implementation Report with Waiver

 Design, PPA Execution, Real Estate Acquisition  
 Construction (Initiated by award of construction contract)  
 Operational Plan  
 Operational Testing and Monitoring Period



LTG Todd Semonite @ESSAYONS54 · Apr 16

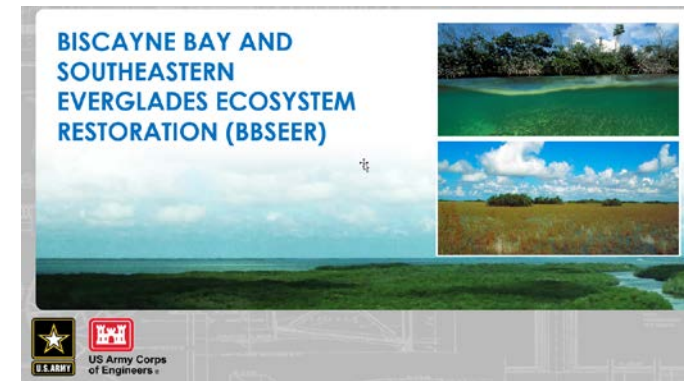
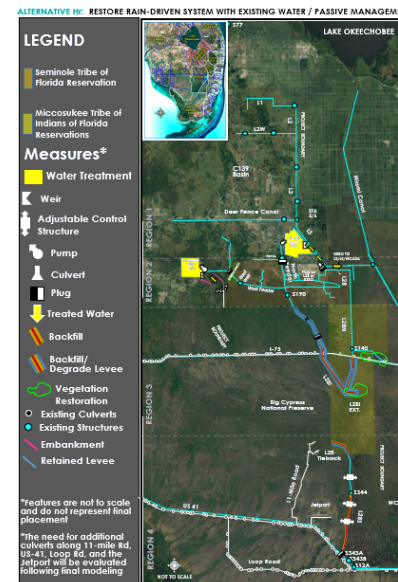
The Chief's Report for the Loxahatchee River Watershed Restoration Project has been SIGNED! Thanks to the @JaxStrong team for all your efforts to reach this important milestone. ESSAYONS!



COMPREHENSIVE EVERGLADES RESTORATION PLAN  
LAKE OKEECHOBEE WATERSHED  
RESTORATION PROJECT  
FINAL INTEGRATED PROJECT  
IMPLEMENTATION REPORT  
AND ENVIRONMENTAL  
IMPACT STATEMENT



August 2020





# IDS 2020: Status of Yellow Book Components

- The Yellow Book continues to be our roadmap
- 68 components



# IDS 2020: Getting the Water Right

## SYSTEM OPERATING MANUALS: THE CRITICAL LAST STEP IN GETTING THE WATER RIGHT AND ACHIEVING MAXIMUM SYSTEM-WIDE BENEFITS

