



Project Partnership Agreement for the Central Everglades Planning Project Everglades Agricultural Area Phase



Jennifer Reynolds, Division Director
Ecosystem Restoration & Capital Projects Division

Governing Board Meeting – April 8, 2021

Everglades Restoration Depends on Our Ability to Convey Water South

EAA Reservoir Project STA



S-333N Construction

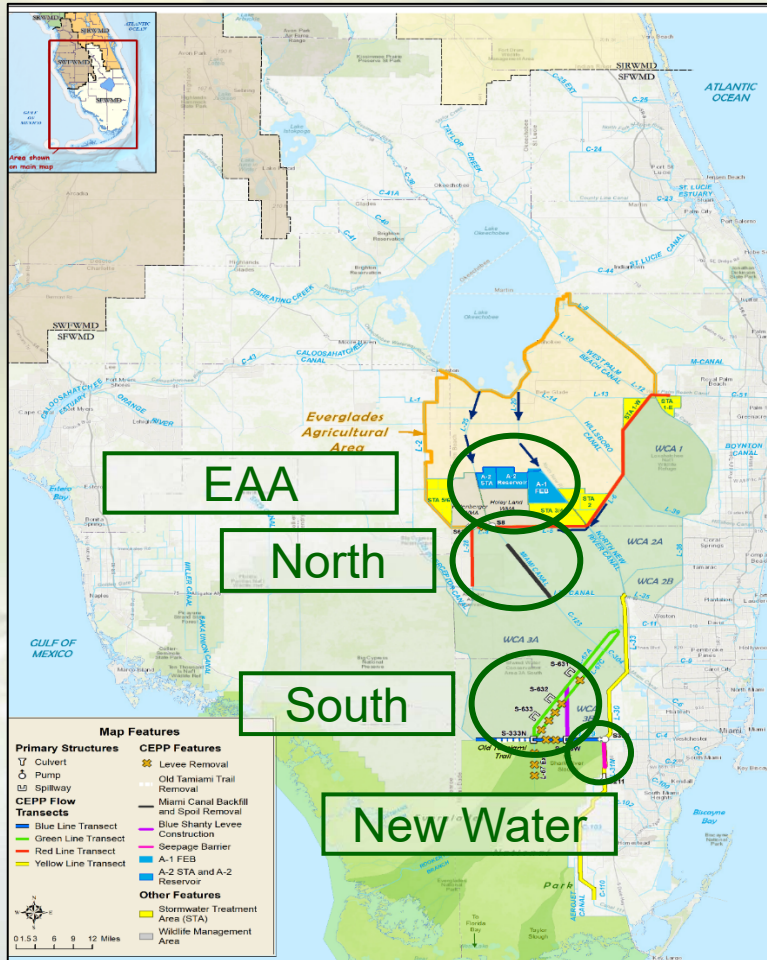


Old Tamiami Trail Roadbed Removal

EAA Reservoir Project STA

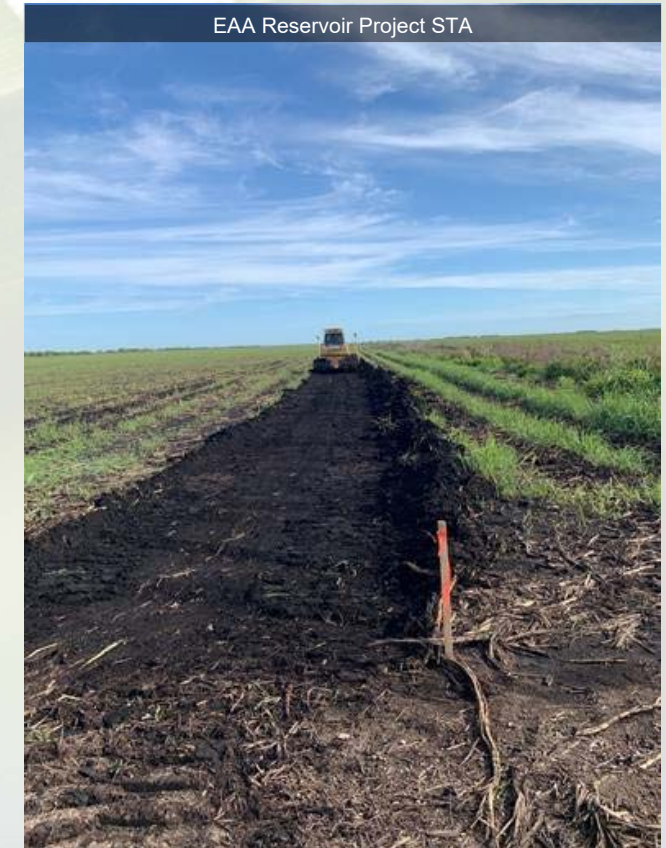


Central Everglades Planning Project



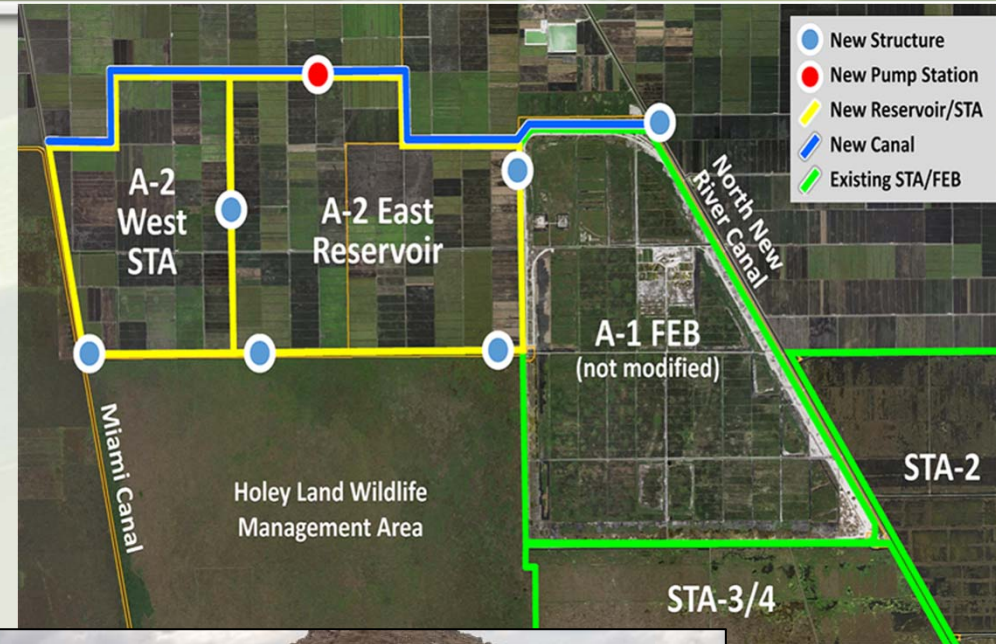
➤ CEPP contains four phases each requiring their own Project Partnership Agreement (PPA):

- South
- Everglades Agricultural Area (EAA)
- North
- New Water



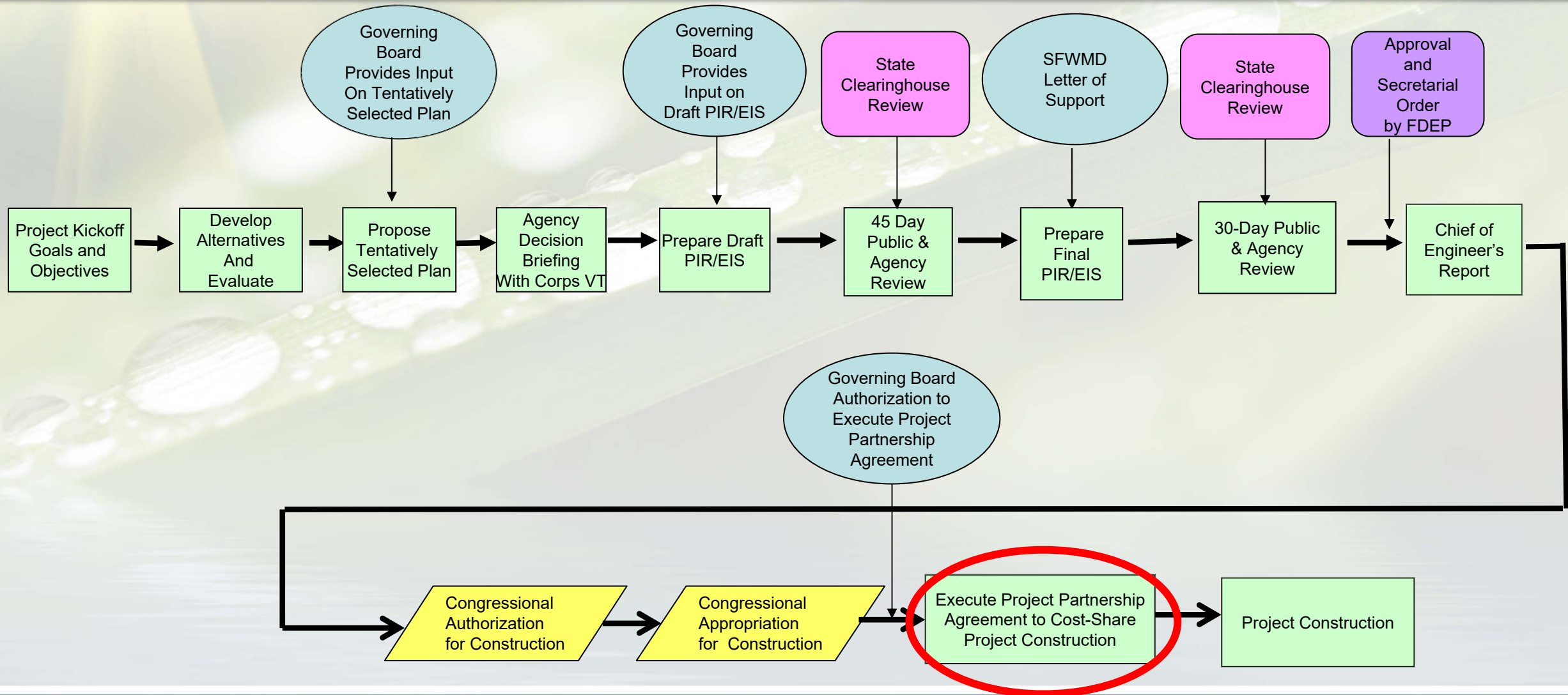
CEPP EAA Phase

- Stores and treats water before it moves south
- Features include:
 - Storage reservoir
 - Stormwater Treatment Area (STA)
 - Canal conveyance improvements
- Pre-Partnership Credit Agreement (PPCA) executed May 2020



EAA Reservoir Project STA

CERP Planning And Implementation



Project Partnership Agreement (PPA) For CEPP EAA Phase



EAA Reservoir Project STA

- Project cost of \$3,402,742,000
 - District construction cost-share: \$1,701,371,000
 - Lands, easements, rights of way, and relocation: \$96,746,000 in
 - District annual Operation and Maintenance, Repair, Replacement and Rehabilitation (OMRR&R) costs: \$10,397,00

Questions / Discussion