

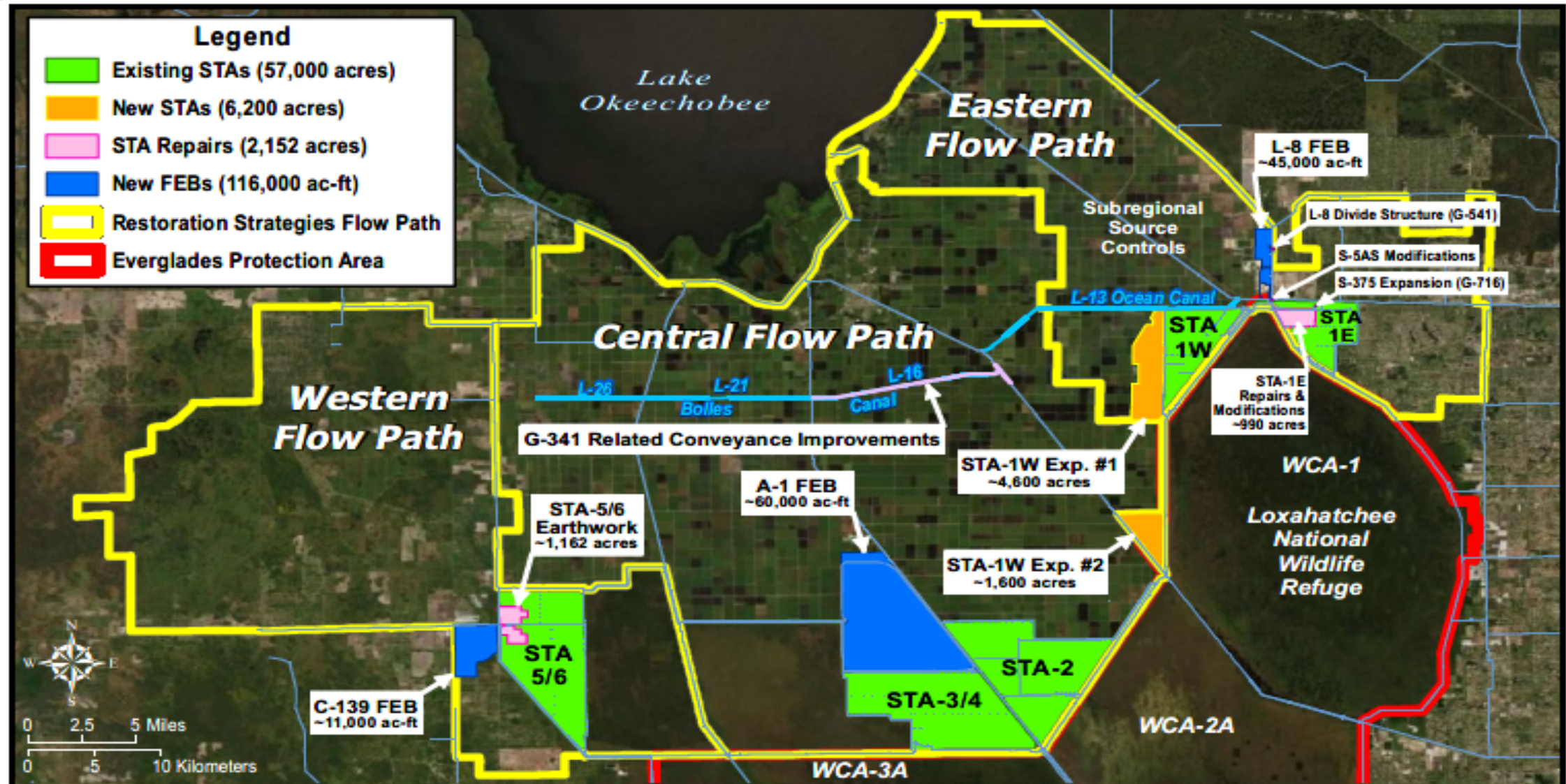
C-139 Flow Equalization Basin (FEB) Project



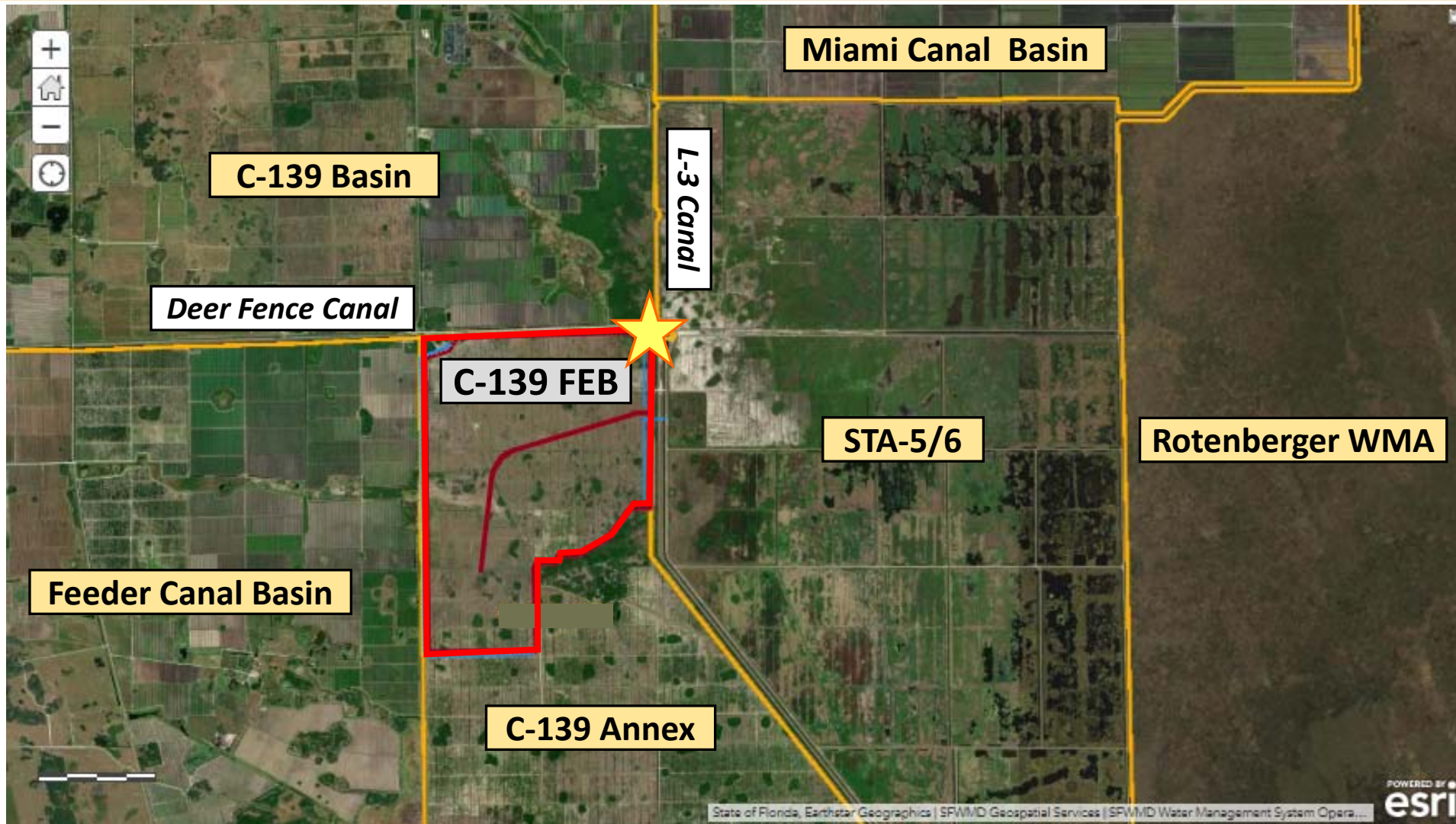
Alan Shirkey, P.E.
Bureau Chief, Engineering and Construction
South Florida Water Management District
Governing Board
December 10, 2020



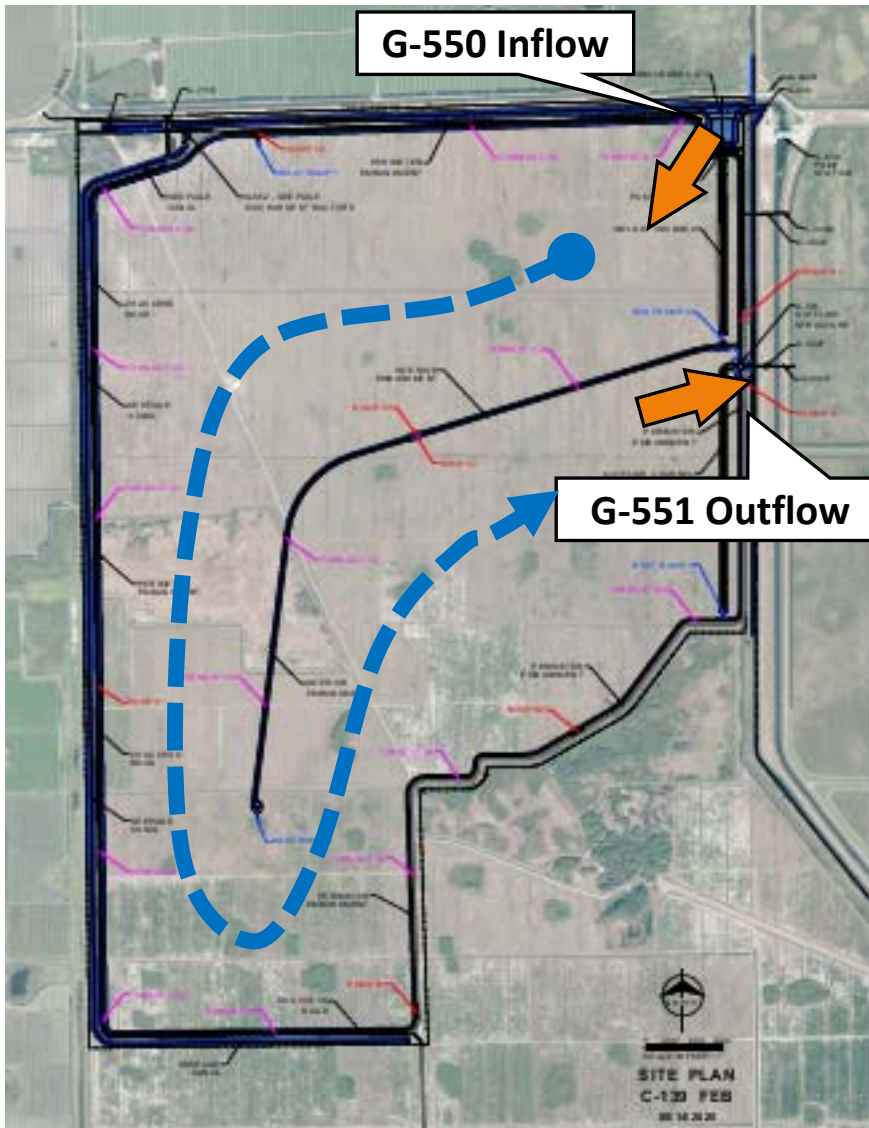
Location



C-139 FEB and Surrounding Watersheds



C-139 FEB Features



- Inflow Pump Station captures runoff from the C-139 Basin
- FEB provides approximately 10,500 acre-feet of storage and pre-treatment at its maximum storage of 4-feet deep
- Discharges stored water to STA-5/6 for treatment
- Includes 690 cfs inflow structure and 690 cfs outflow structure



Bid Summary

- RFB Advertised: October 21, 2020
- Bid Opening: November 30, 2020
- Number of Bids Received: 5
- Bid Range: \$79,933,411 to 110,410,250
- Engineer's Estimate: \$102,000,000 to \$113,000,000.00

Resolution

A Resolution of the Governing Board of the South Florida Water Management District to authorize entering into a 900-day contract with Condotte-Ryan, JV, the lowest responsive and responsible bidder, for the C-139 Flow Equalization Basin Project, in the amount of \$79,933,411 for which \$22,500,000 in dedicated funds (Land Acquisition Trust Fund, Save Our Everglades Trust Fund and Everglades Trust Fund) and Ad Valorem funds are budgeted in Fiscal Year 2020-2021 and the remainder is subject to Governing Board approval of future years budgets; providing an effective date. (Contract No. 4600004345)

RS STA-1E Western Flow-way Modifications – Regrading Project

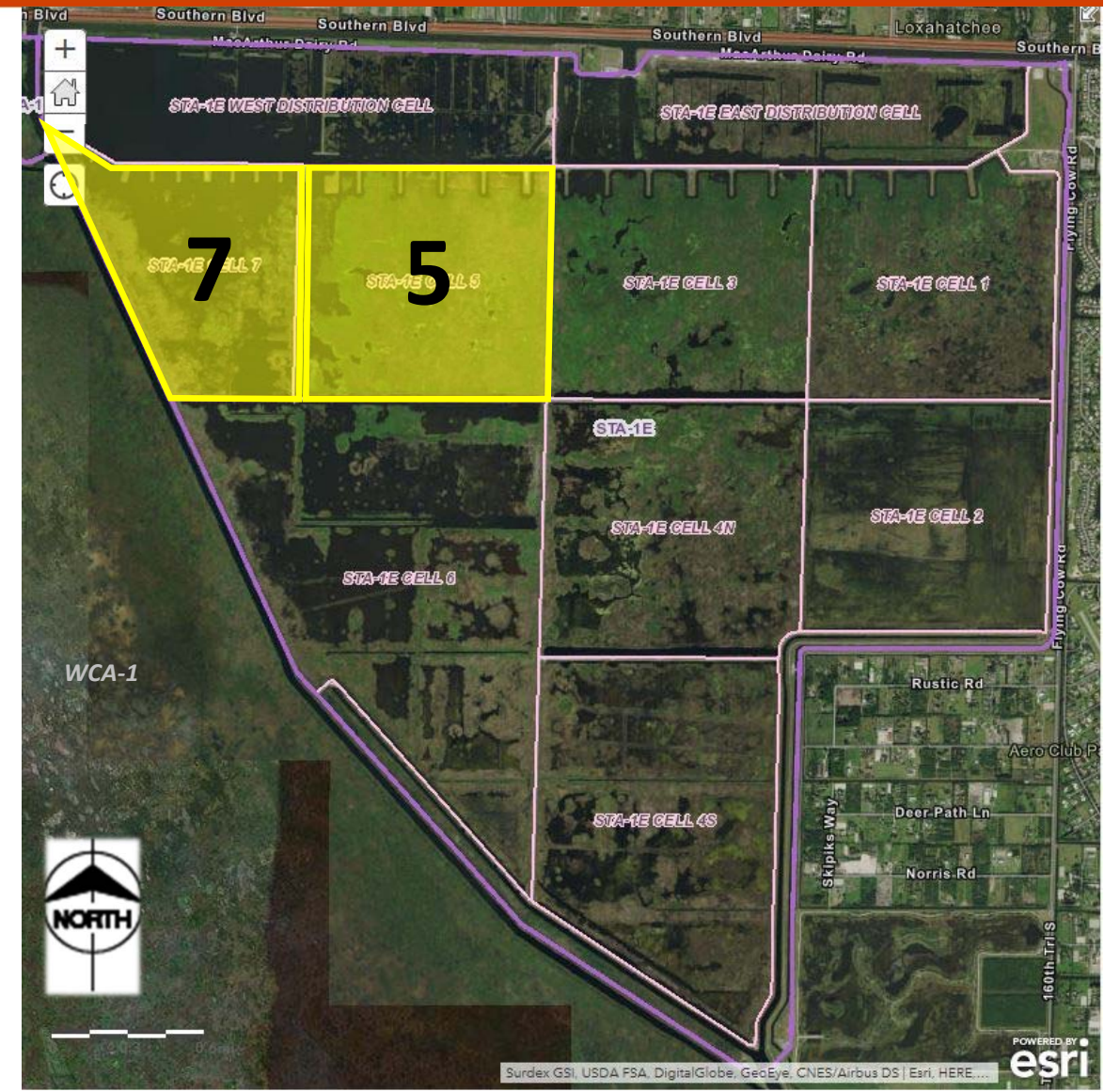


Alan Shirkey, P.E.
Bureau Chief, Engineering and Construction
South Florida Water Management District
Governing Board Meeting
December 10, 2020



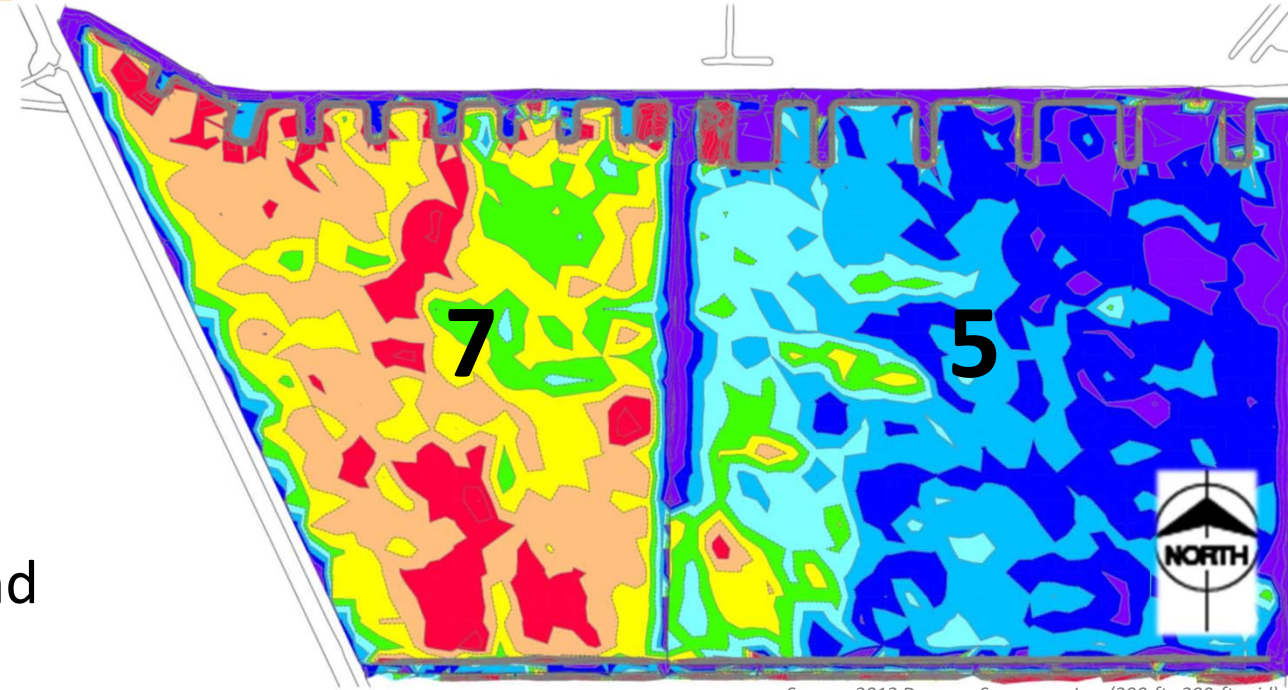
STA-1E Background

- USACE Designed and Constructed STA-1E
 - Adjacent to northeast side of WCA-1 (Loxahatchee National Wildlife Refuge)
 - Flood control by stormwater retention
 - Stormwater treatment
 - Re-establish WCA-1 hydro-periods
- Transferred to SFWMD in October 2005
 - Cells 5 & 7 experienced performance issues related to excessive water depths
 - Consent Order OGC# 12-1148: Complete Re-grading of Cells 5 & 7 by December 31, 2022



Restoration Strategies STA-1E Modifications Project

- Regrade Cells 5 & 7 to 11.5-ft NAVD
- Cell 5
 - Level and redistribute existing material
- Cell 7
 - Entire cell is below target elevation
 - Imported sandy soil required to raise and regrade Cell 7
- District awarded two Contracts to support project
 - Palm Beach Aggregates - Imported Soil Feb 2020
 - Thalle Construction Co - Regrading April 2020



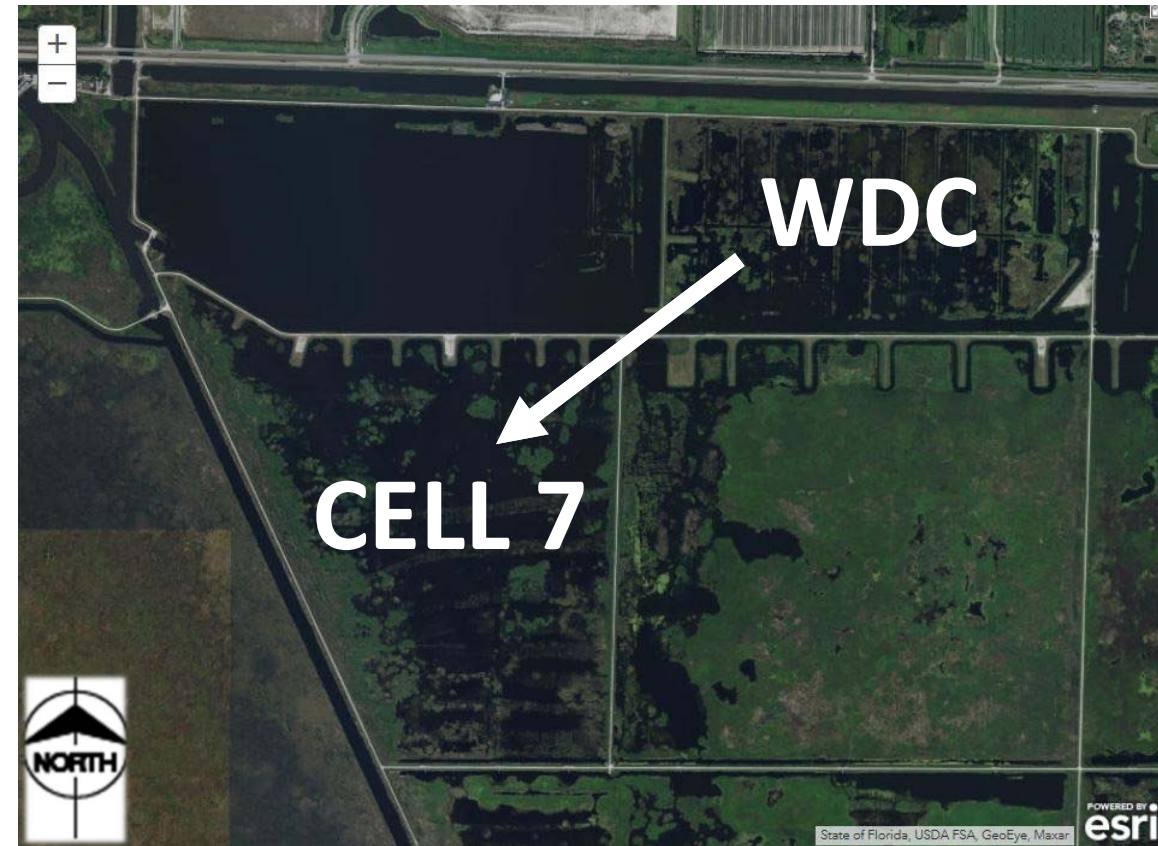
Source: 2012 Degrove Surveyors, Inc. (200-ft x 200-ft grid)

RED = LOW
TARGET
ELEVATION
BLUE = HIGH

EXISTING GRADE NAVD			
NUMBER	MINIMUM	MAXIMUM	COLOR
1	3.1	9.5	RED
2	9.5	10.0	ORANGE
3	10.0	10.5	YELLOW
4	10.5	11.0	GREEN
5	11.0	11.5	CYAN
6	11.5	12.0	BLUE
7	12.0	12.5	DARK BLUE
8	12.5	14.0	PURPLE

Change Order No. 2

- Thalle Contract Additive Change Order
 - WDC: Excavate 300,000 cubic yards of sandy soil (current Contract includes 150,000)
 - Cell 7: Transport and fill
 - Contract Unit Price \$8.00/cubic yard
 - Total Change Order \$1,200,000
- Palm Beach Aggregates Deductive Change Order
- \$460,000 net savings to District





Resolution

A Resolution of the Governing Board of the South Florida Water Management District to authorize Change Order No. 2 to Contract No. 4600004206 with Thalle Construction Co., Inc., for the RS STA-1E Western Flowway Modifications - Regrading Project – Palm Beach County, for an additional amount of \$1,200,000.00, for which \$1,200,000.00 of dedicated funds (Land Acquisition Trust Fund) and Ad Valorem funds are budgeted in Fiscal Year 2020-2021; providing an effective date. (Contract No. 4600004206)