

# C-139 Flow Equalization Basin (FEB) Project

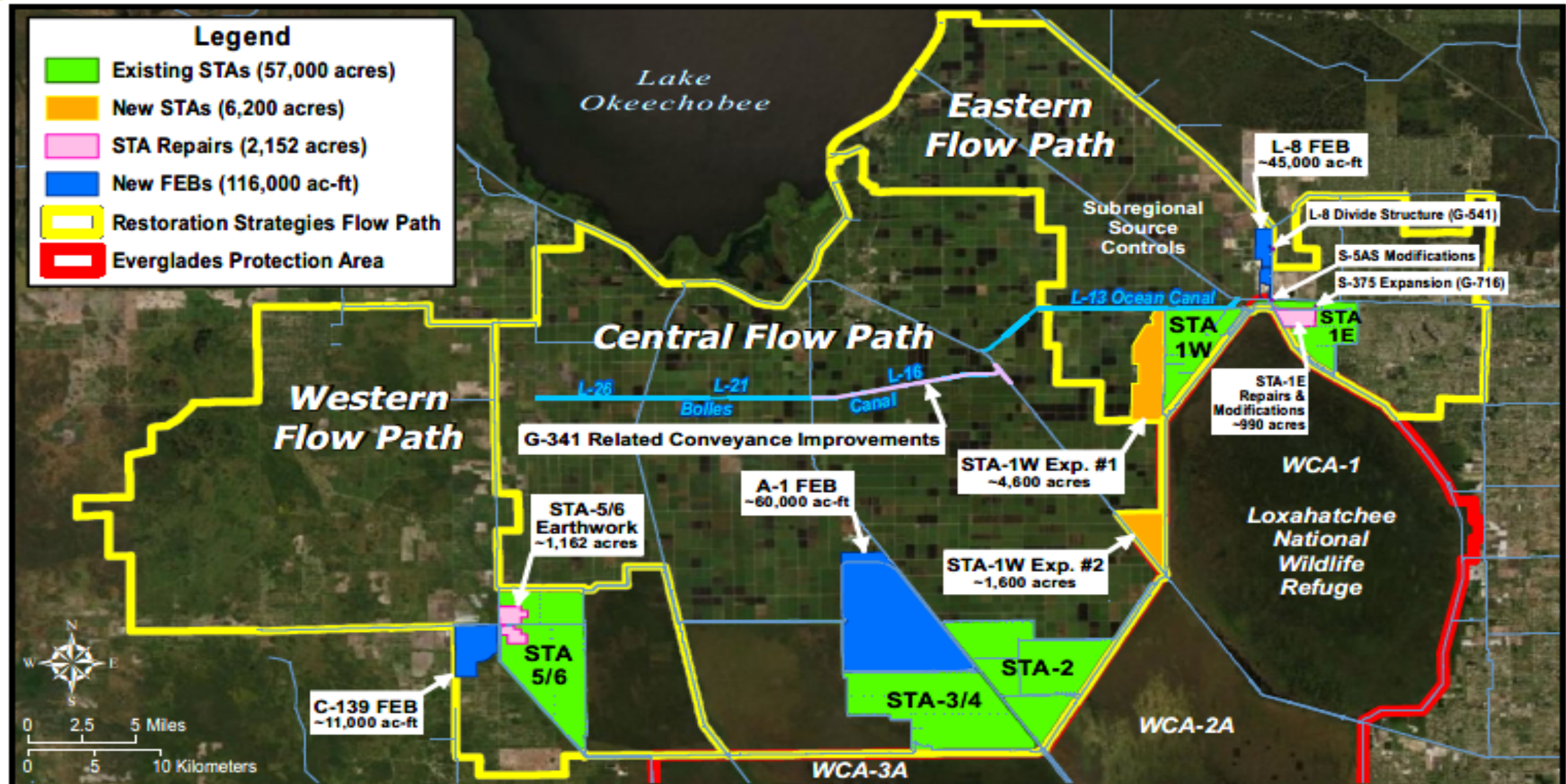


**Alan Shirkey, P.E.**  
**Bureau Chief, Engineering and Construction**  
**South Florida Water Management District**  
**Governing Board**  
**December 10, 2020**



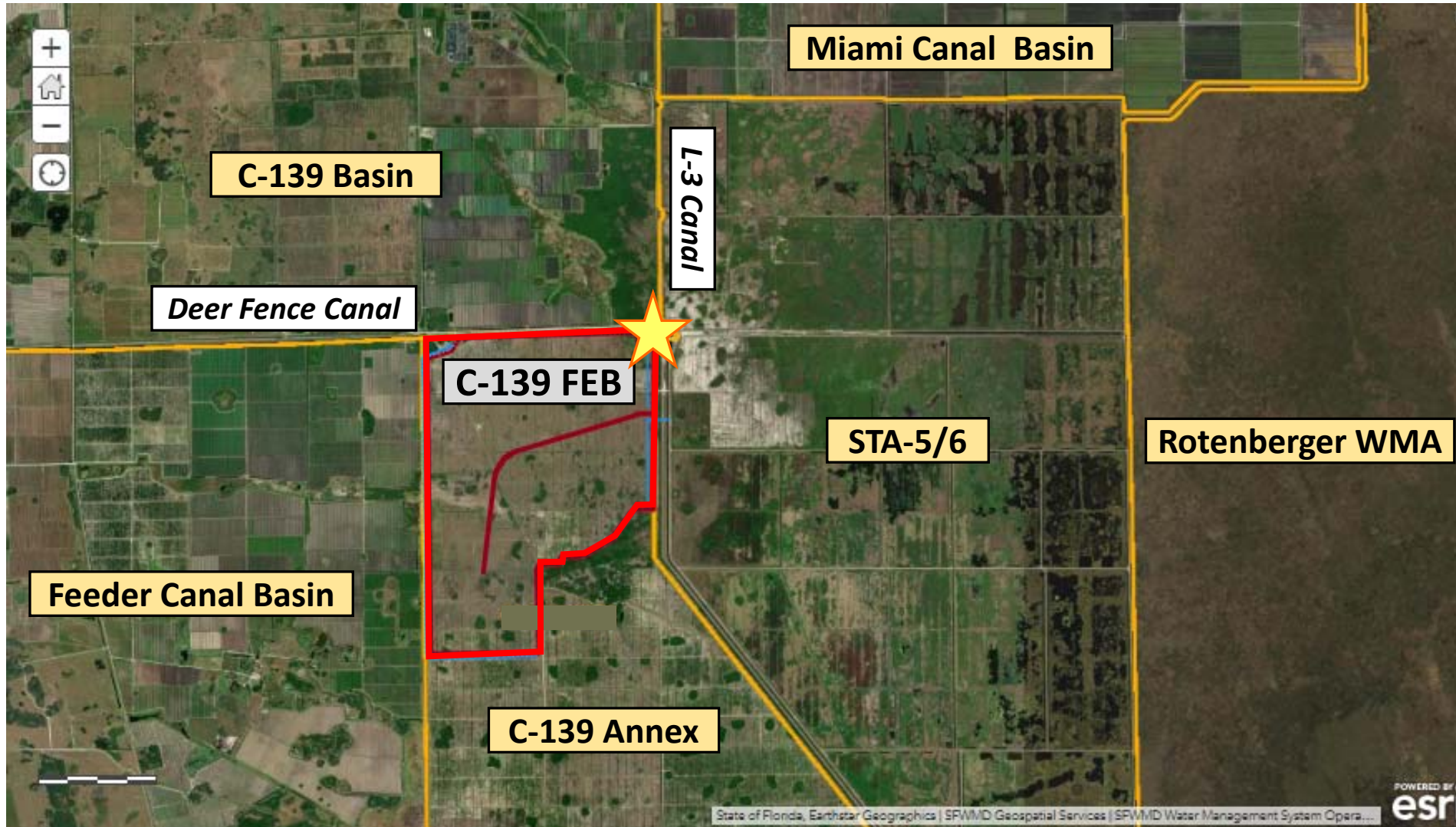


# Location



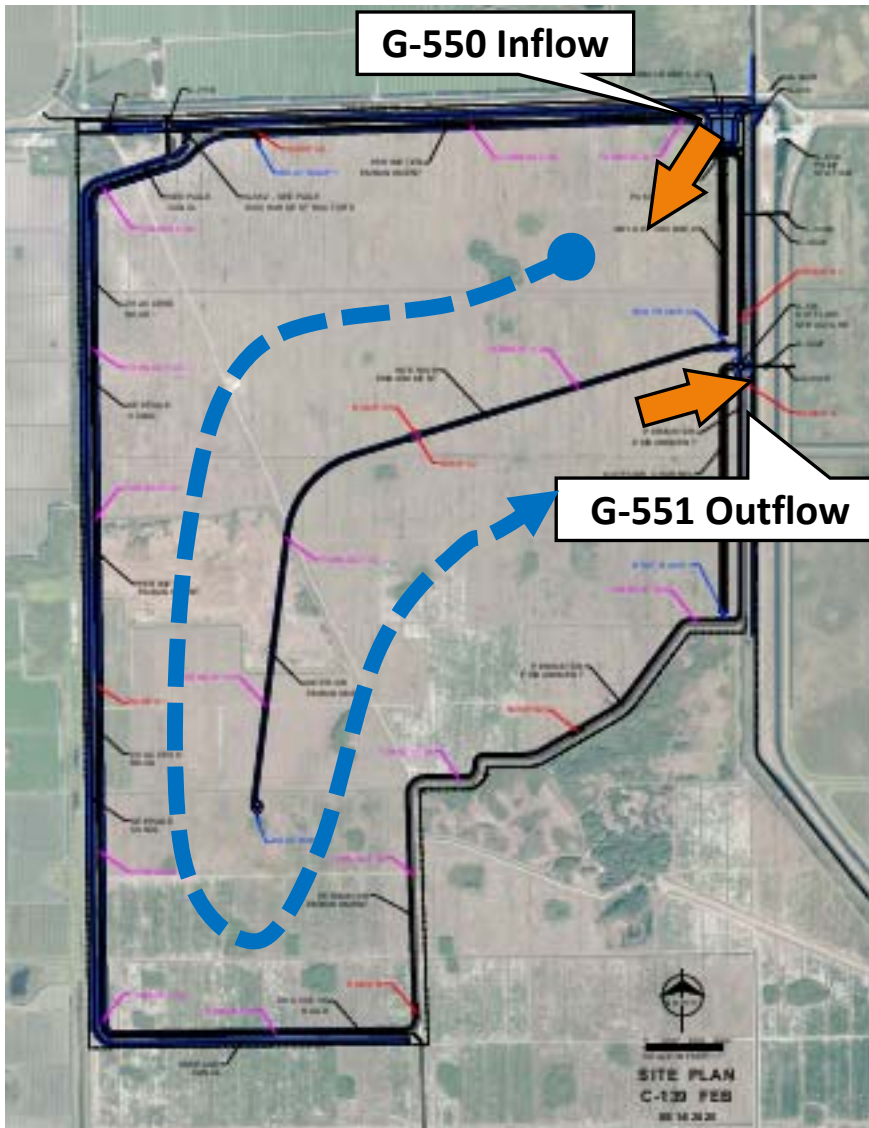


# C-139 FEB and Surrounding Watersheds





# C-139 FEB Features



- Inflow Pump Station captures runoff from the C-139 Basin
- FEB provides approximately 10,500 acre-feet of storage and pre-treatment at its maximum storage of 4-feet deep
- Discharges stored water to STA-5/6 for treatment
- Includes 690 cfs inflow structure and 690 cfs outflow structure

# Bid Summary

- RFB Advertised: October 21, 2020
- Bid Opening: November 30, 2020
- Number of Bids Received: XX
- Bid Range: \$XXX to \$XXX
- Engineer's Estimate: \$102,000,000 to \$113,000,000.00



# Resolution

**A Resolution of the Governing Board of the South Florida Water Management District to authorize entering into a 900-day contract with XXXXX, the lowest responsive and responsible bidder, for the C-139 Flow Equalization Basin Project, in the amount of \$xx,xxx,xxx for which \$xx,xxx,xxx in dedicated funds (Land Acquisition Trust Fund, Save Our Everglades Trust Fund and Everglades Trust Fund) and Ad Valorem funds are budgeted in Fiscal Year 2020-2021 and the remainder is subject to Governing Board approval of future years budgets; providing an effective date. (Contract No. 460000xxxx)**