



DRAFT

BIG CYPRESS BASIN BOARD MEETING

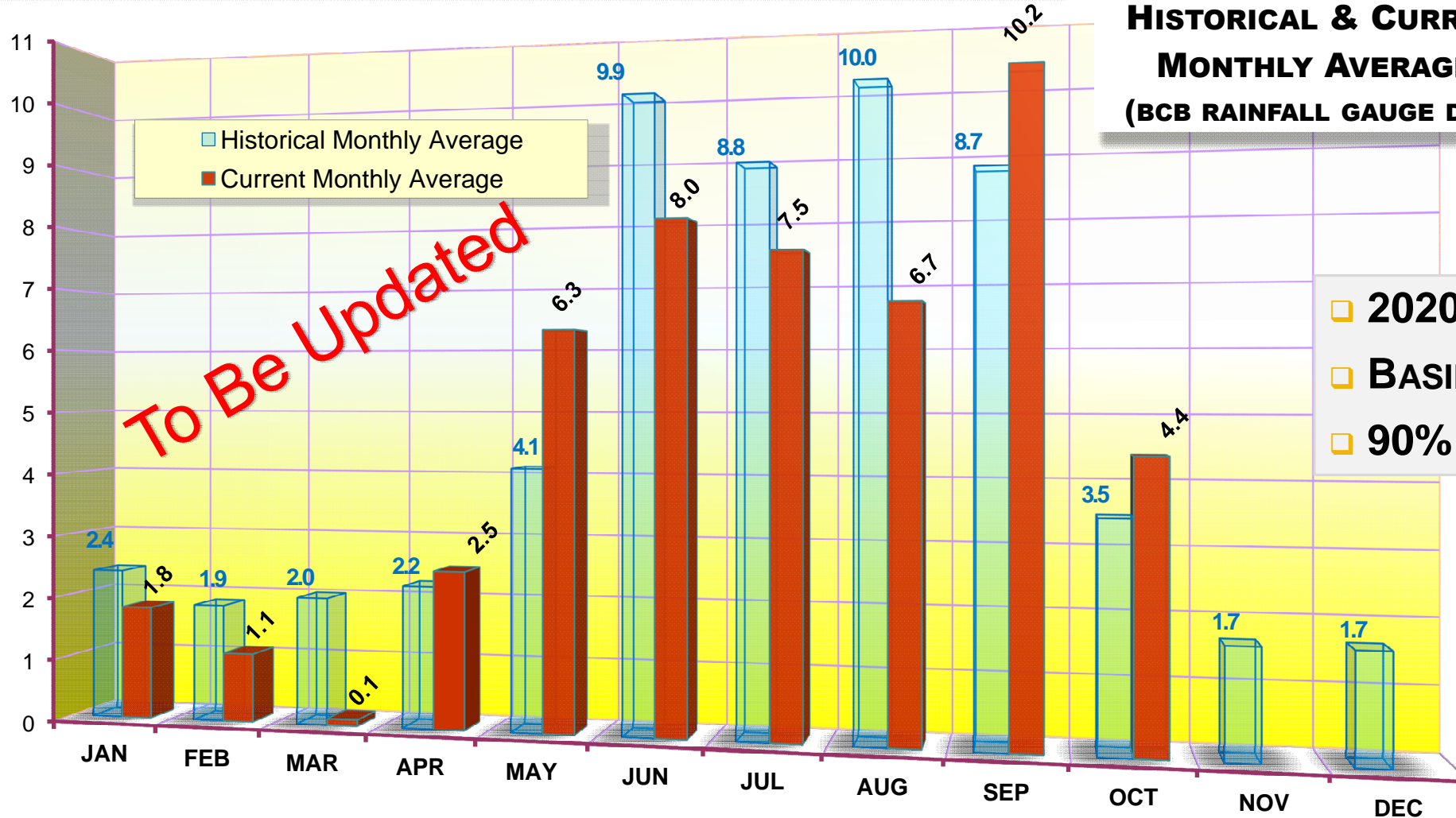
BCB WATER CONDITIONS REPORT
November 18, 2020

Brad J Jackson, P.E., CFM
Principal Engineer
Big Cypress Basin

Hydrologic Conditions ~ BCB Gauge Rainfall

2020 MONTHLY SUMMARY

BCB ANNUAL RAINFALL HISTORICAL & CURRENT MONTHLY AVERAGES (BCB RAINFALL GAUGE DATA)



- 2020 YTD TOTAL = 48.6 IN
- BASIN AVG TOTAL = 53.6 IN
- 90% OF NORMAL YTD

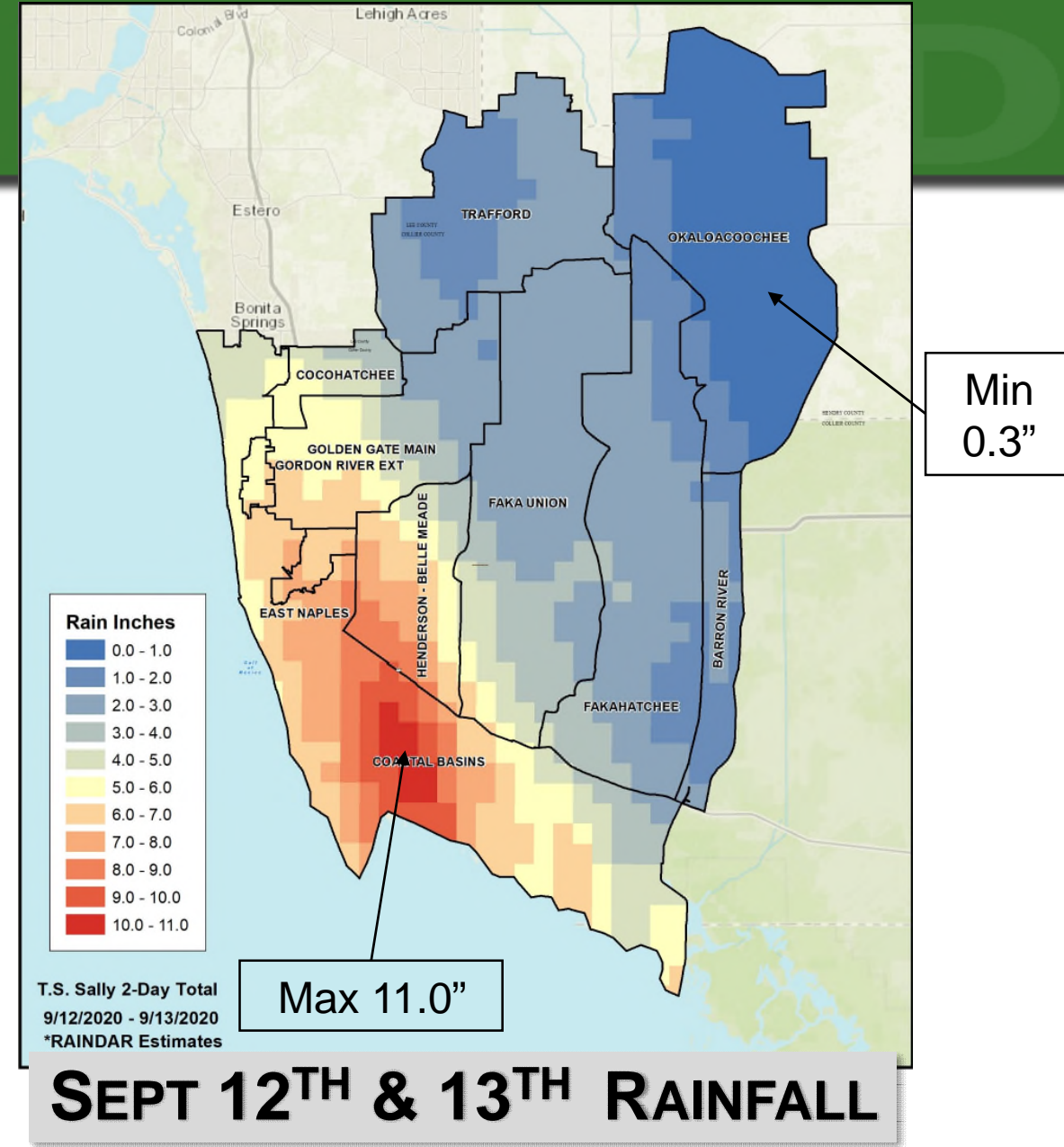
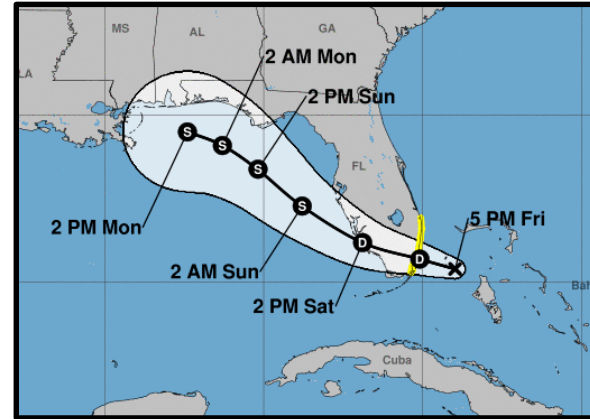
NOTE: COVERAGE FOR LOCALITIES
WITHIN BCB GAUGE NETWORK ONLY

Tropical Storm Sally

September 12th & 13th

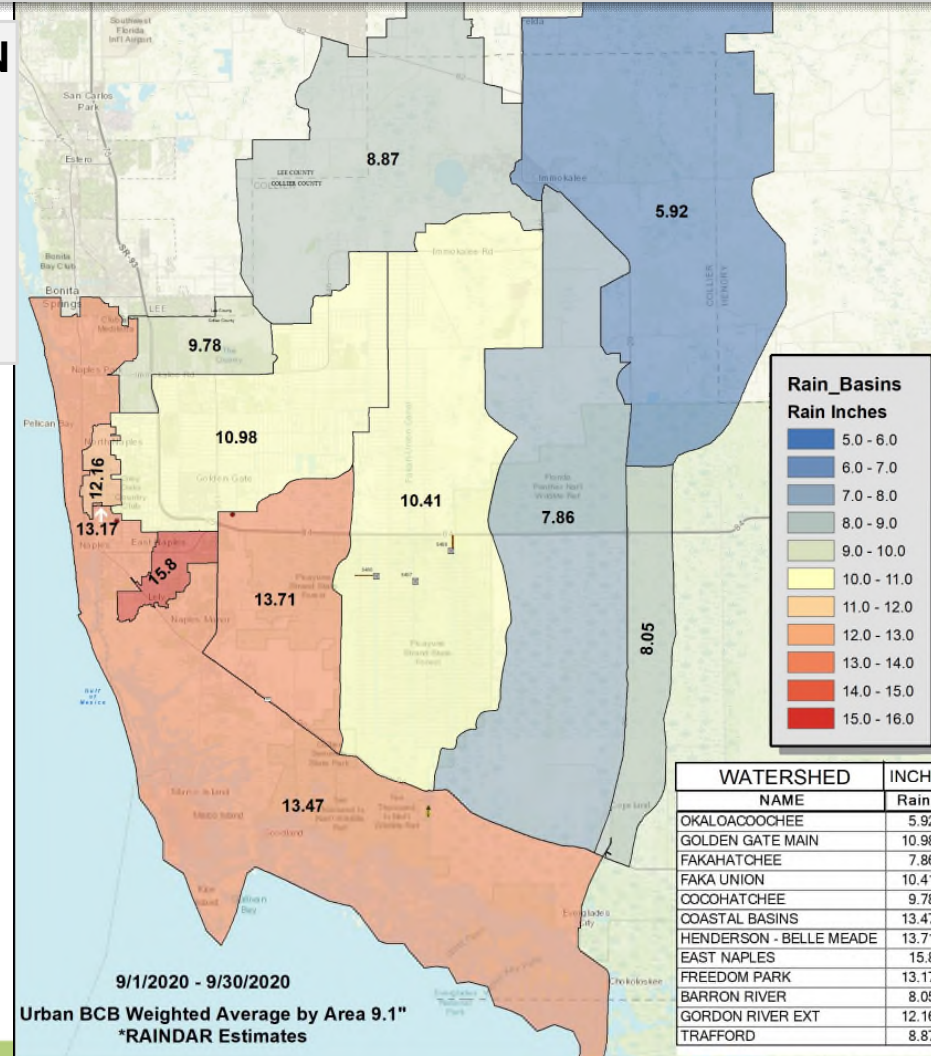


BCB Drainage Basins	Rainfall (in)
BARRON RIVER	1.91
COASTAL BASINS	6.58
COCOHATCHEE	4.27
EAST COLLIER	1.00
EAST NAPLES	6.73
FAKAHATCHEE	2.34
FAKA UNION	3.09
FREEDOM PARK	6.13
GOLDEN GATE MAIN	4.16
GORDON RIVER EXT	5.95
HENDERSON - BELLE MEADE	6.40
OKALOACOOCHEE	0.80
TRAFFORD	2.08

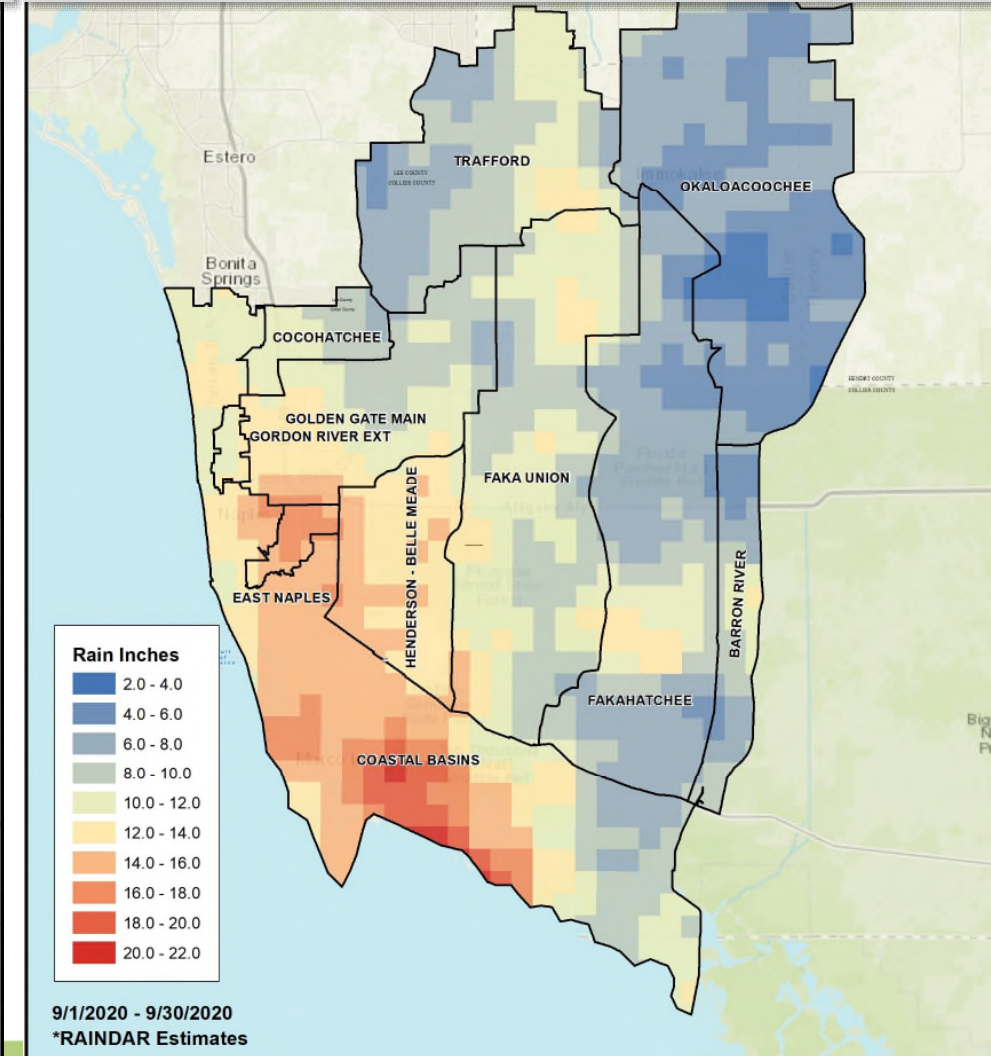


Hydrologic Conditions ~ BCB Rainfall

SEPT. 2020 RAIN BY BASIN



SEPT. 2020 RAINDAR

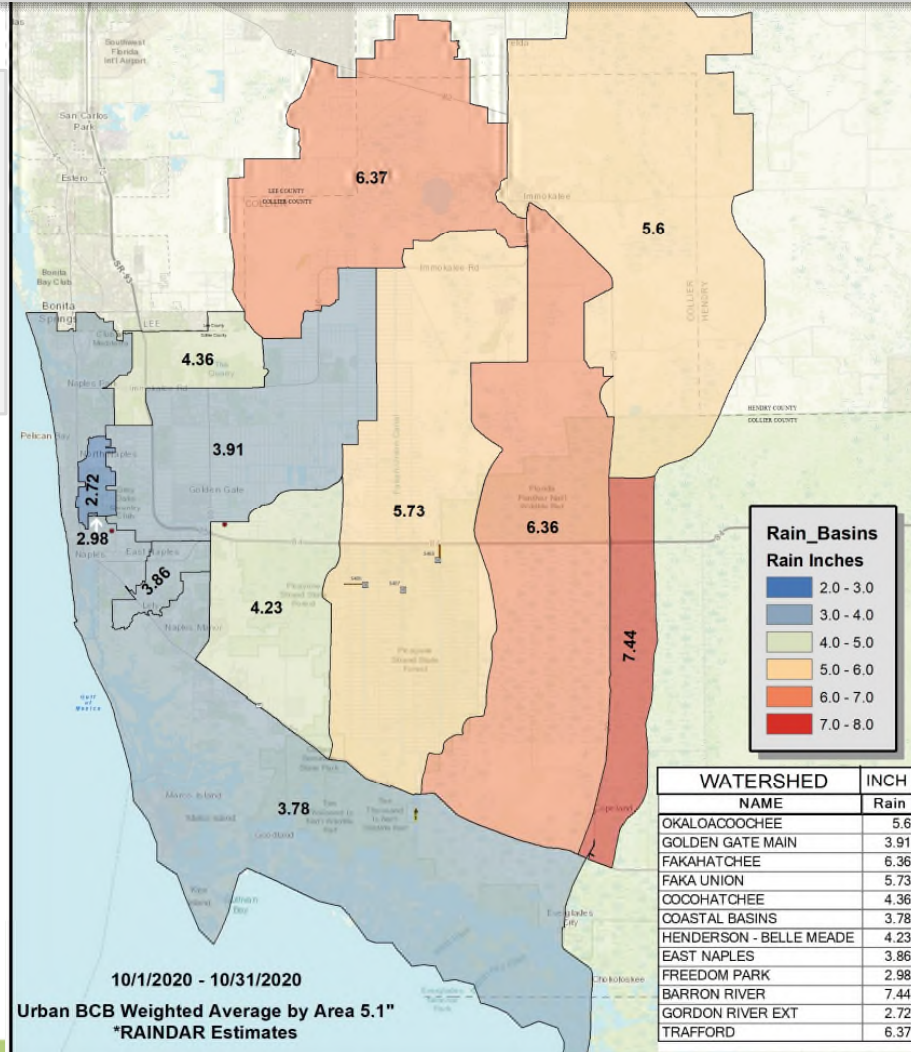


HISTORICAL COMPARISON
2020: 9.1"
HIGH: 17.6" (2017)
LOW: 2.4" (2019)
AVG: 8.7"

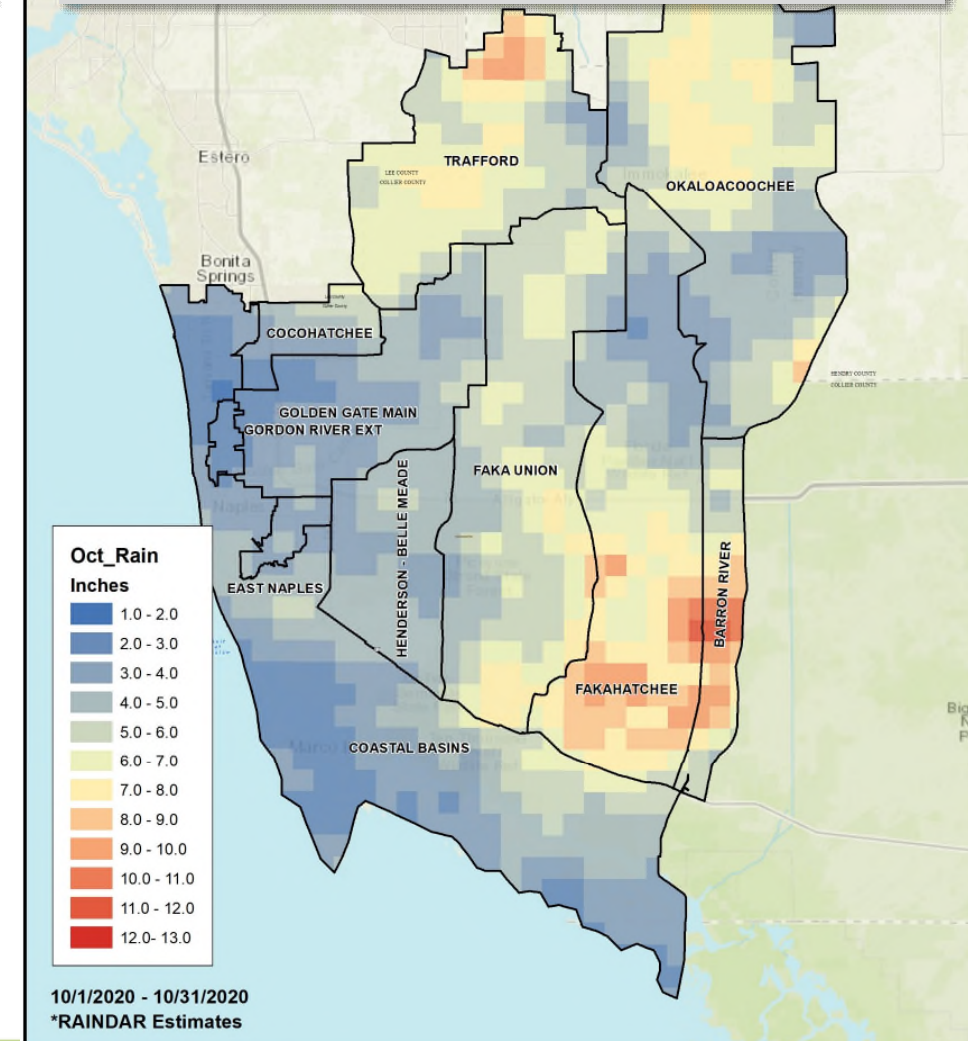


Hydrologic Conditions ~ BCB Rainfall

OCTOBER 2020 BY BASIN



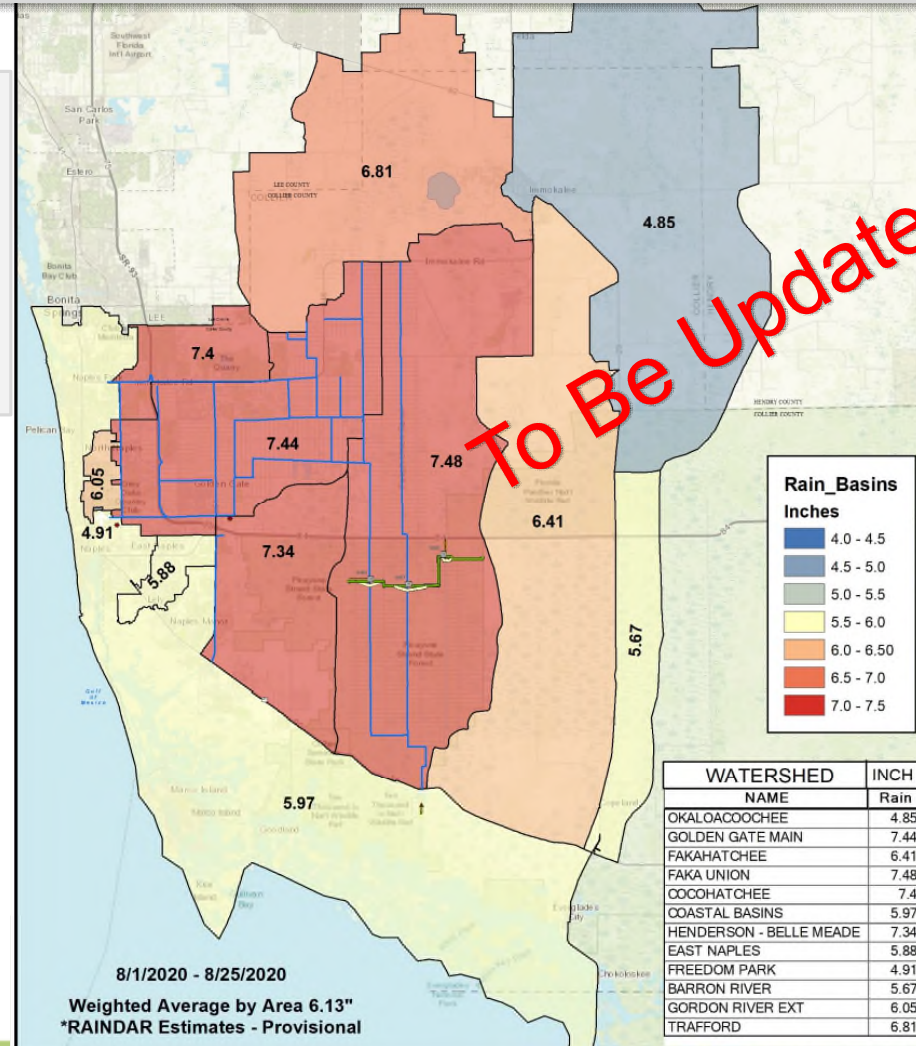
OCTOBER 2020 RAINDAR



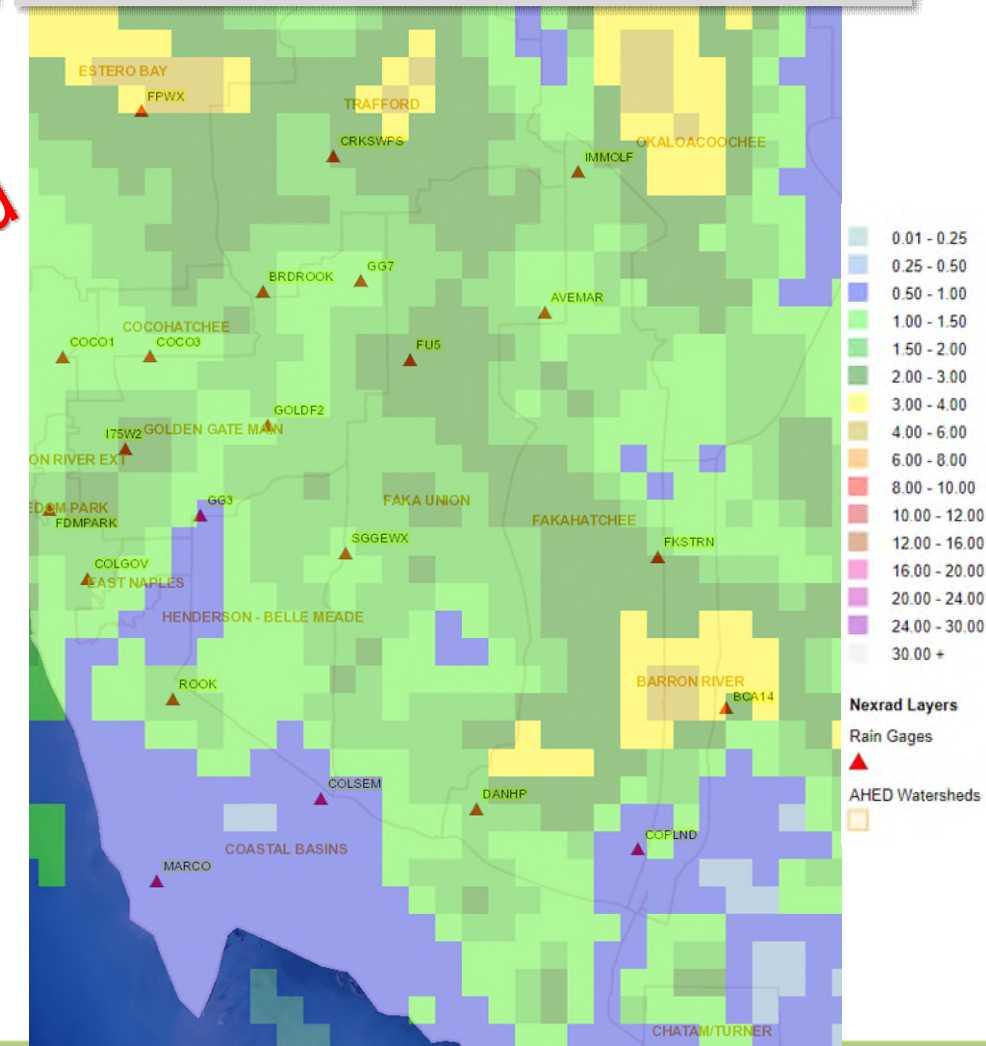
HISTORICAL COMPARISON
2020: 4.4"
HIGH: 13.3" (1995)
LOW: 0.7" (2003)
AVG: 3.5"

Hydrologic Conditions ~ BCB Rainfall

NOVEMBER 2020 BY BASIN



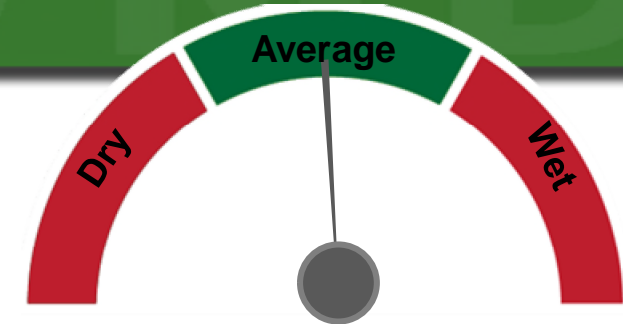
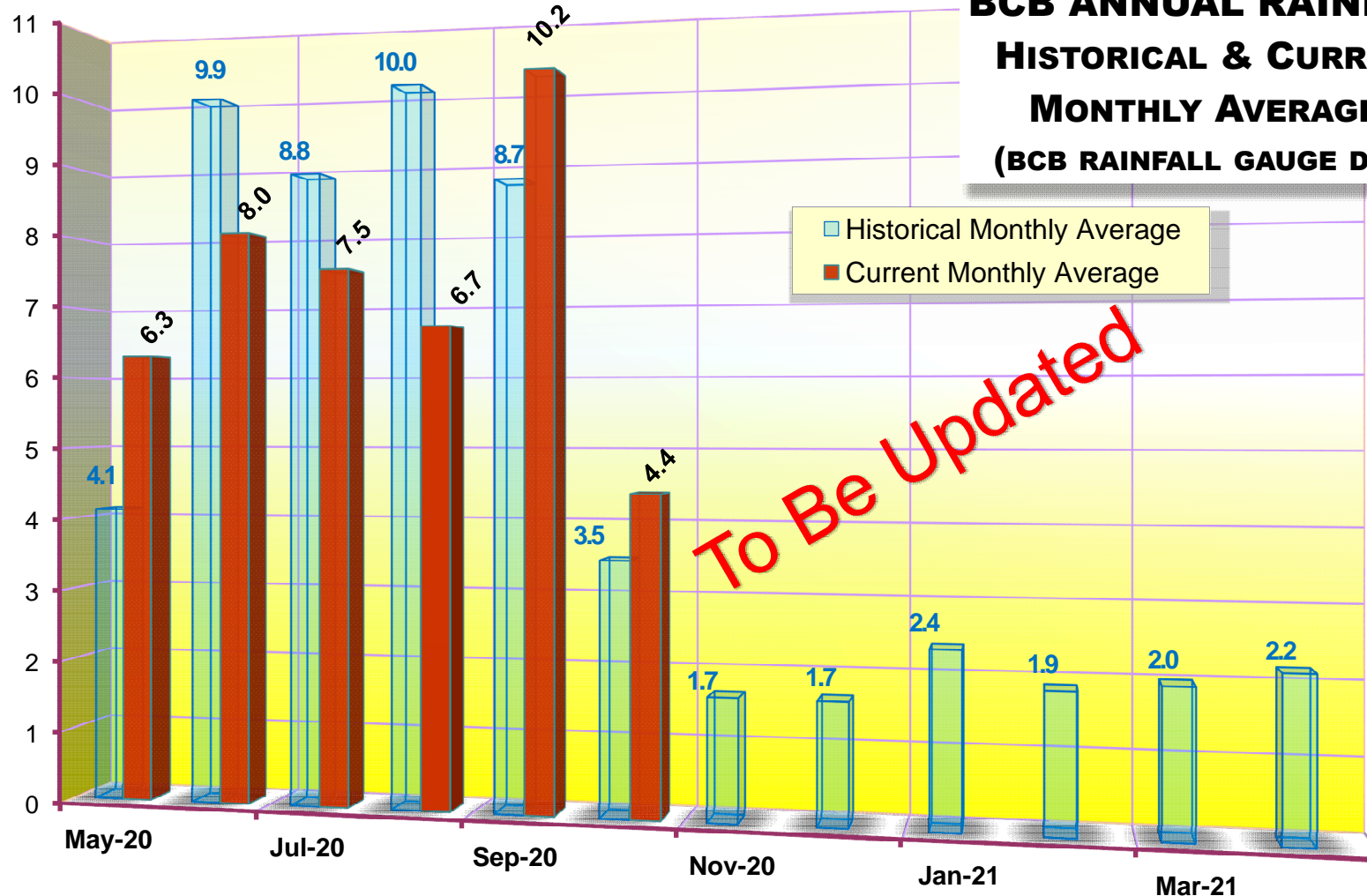
NOVEMBER 2020 RAINDAR



HISTORICAL COMPARISON
2020: x.x" (11/1-11/17)
HIGH: 7.5" (1998)
LOW: 0.2" (2000)
AVG: 1.7"

BCB Water Year Summary

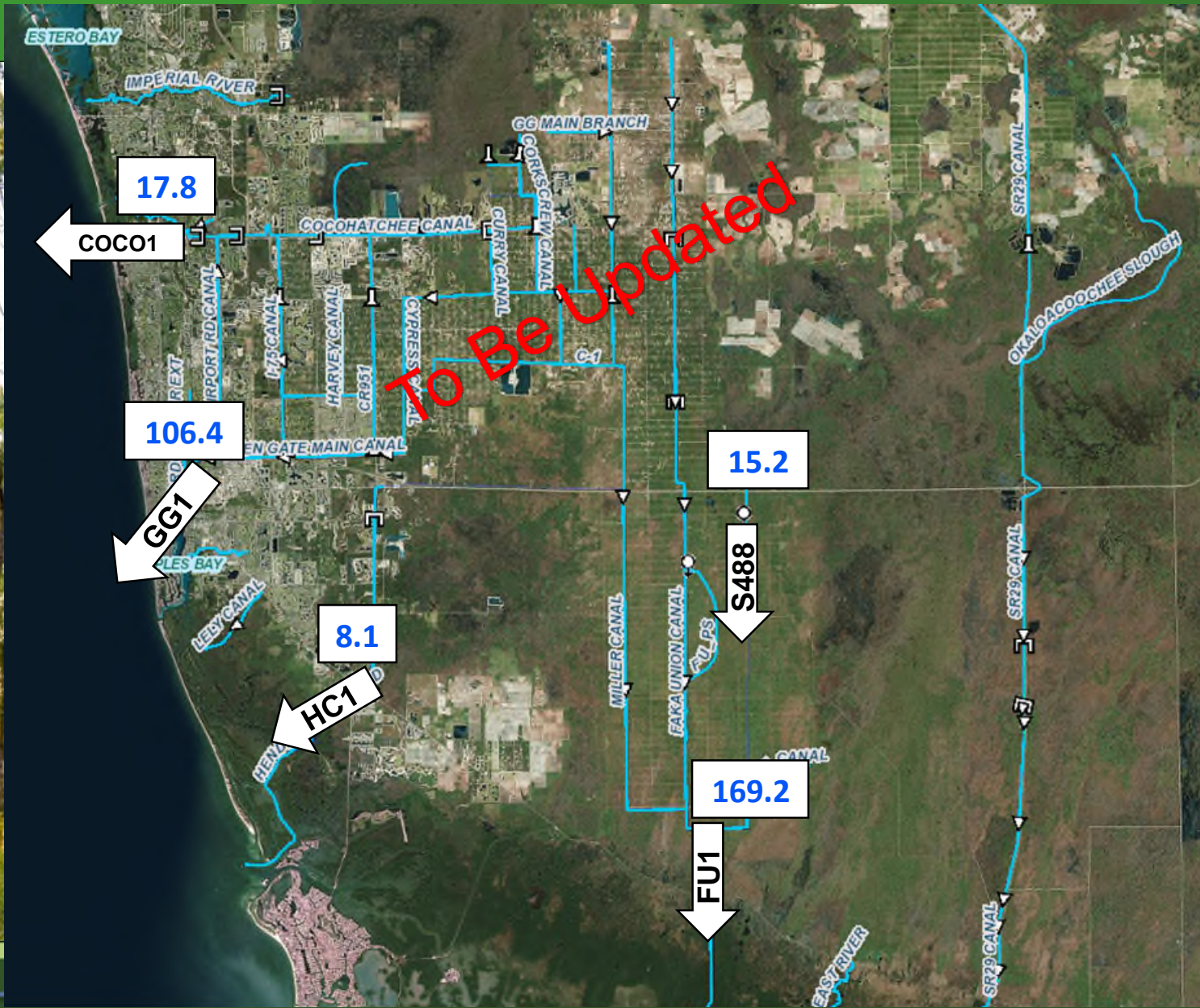
BCB ANNUAL RAINFALL HISTORICAL & CURRENT MONTHLY AVERAGES (BCB RAINFALL GAUGE DATA)



Water Year Rainfall
May 1, 2020 –
Oct 31, 2020
BCB Total Rainfall: 43.1"

- 96% of average
- Approx. 1.9" deficit
- Wet Season Start - May 15, 2020
- Wet Season End – Oct xx, 2020

BCB - Outflow Volumes

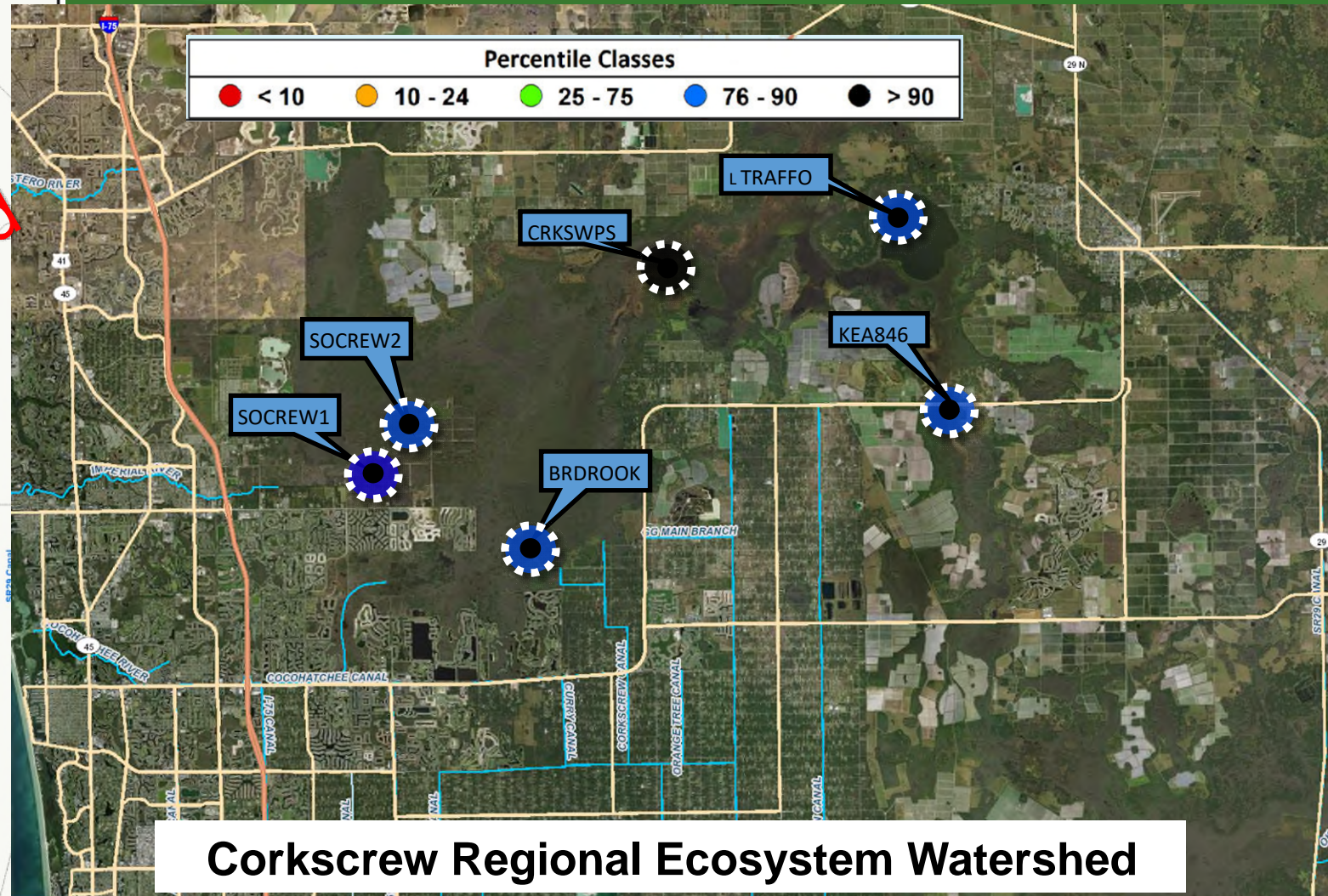


BCB – Release Volumes
(volumes in 1,000 acre-feet)

Water Year - Volume discharges
05/01/20 to 10/31/20

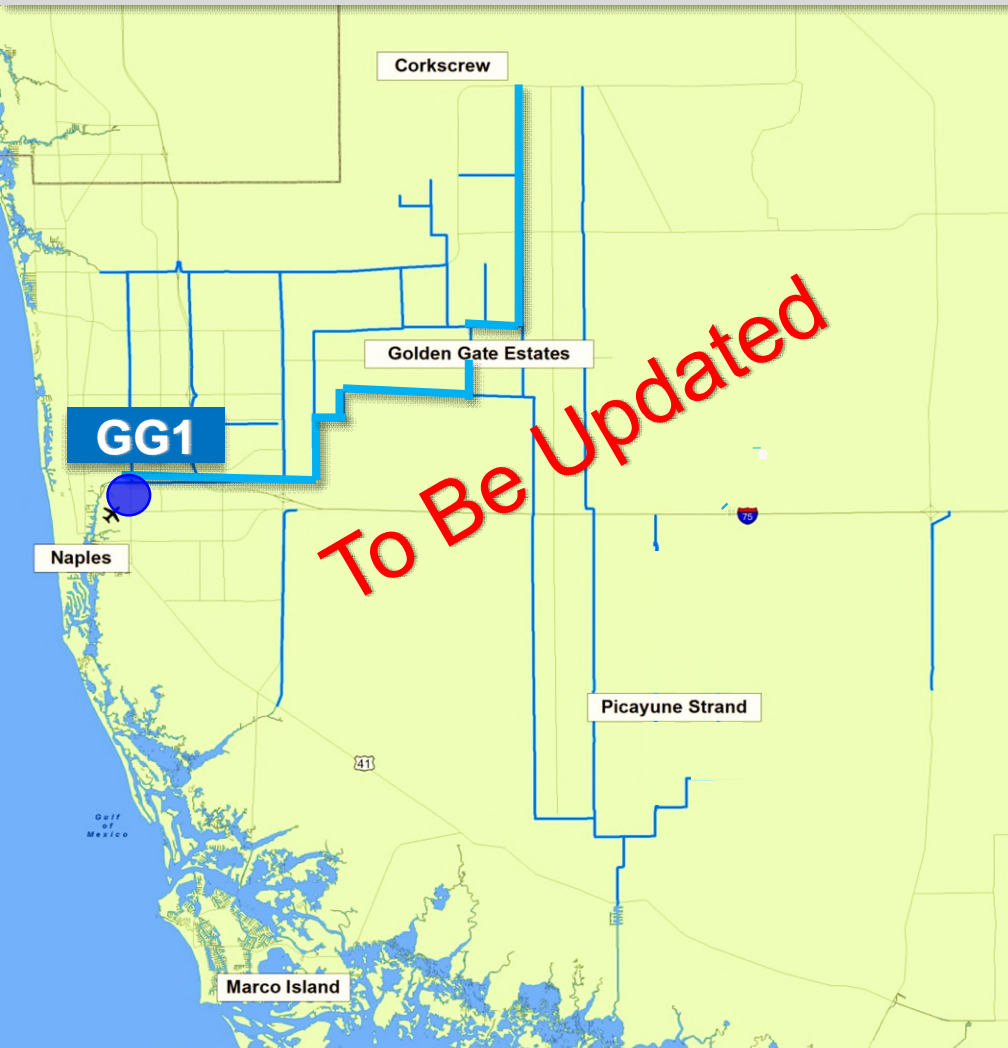
Date of Initial Flood Control Discharges
- Water Year 2020-2021

COCO1 & HC1 – Early June 2020
GG1 & FU1 – Late May 2020
S488 – Late June 2020

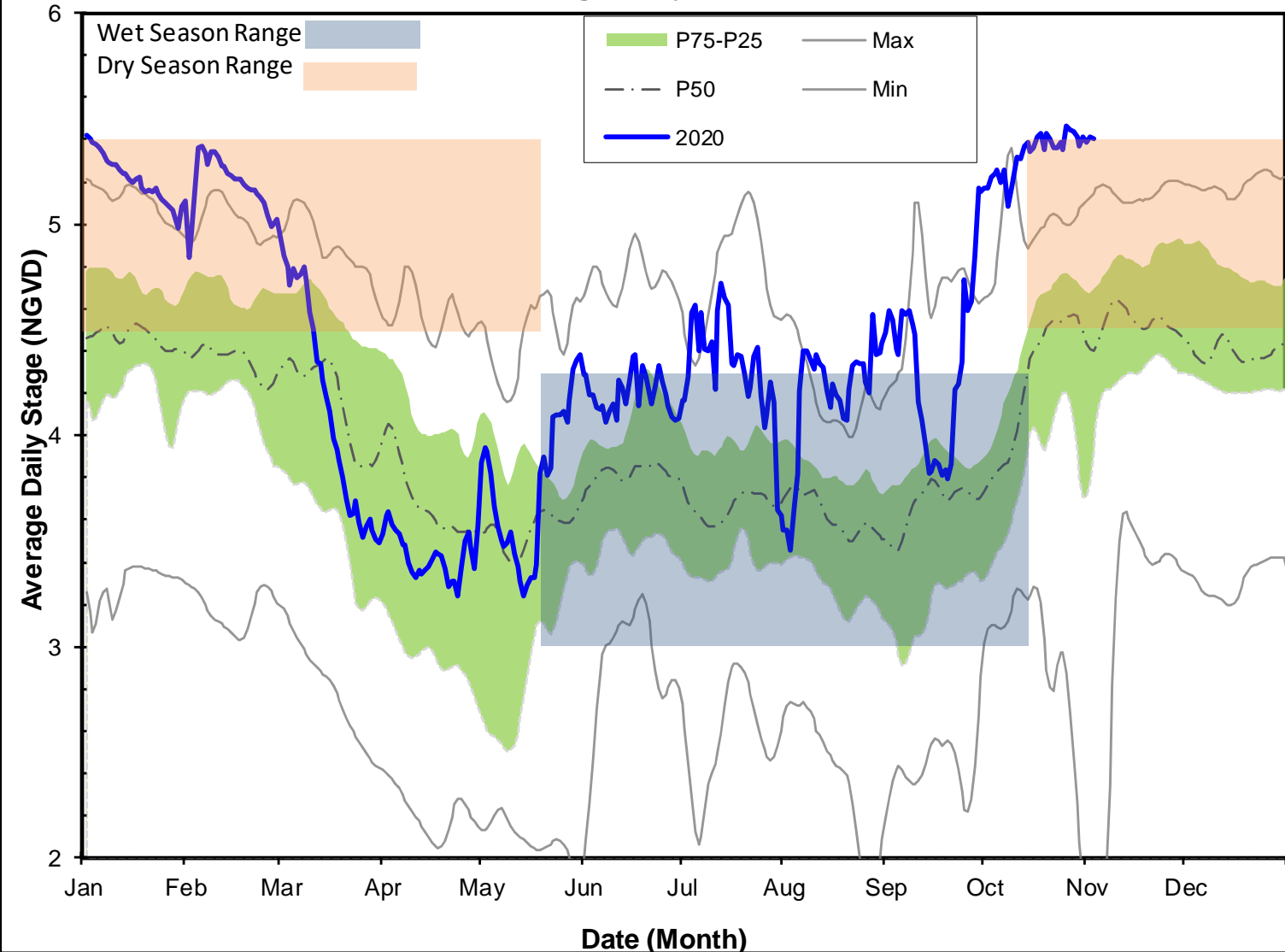


BCB Canal Levels ~ Daily Average Track

GOLDEN GATE MAIN

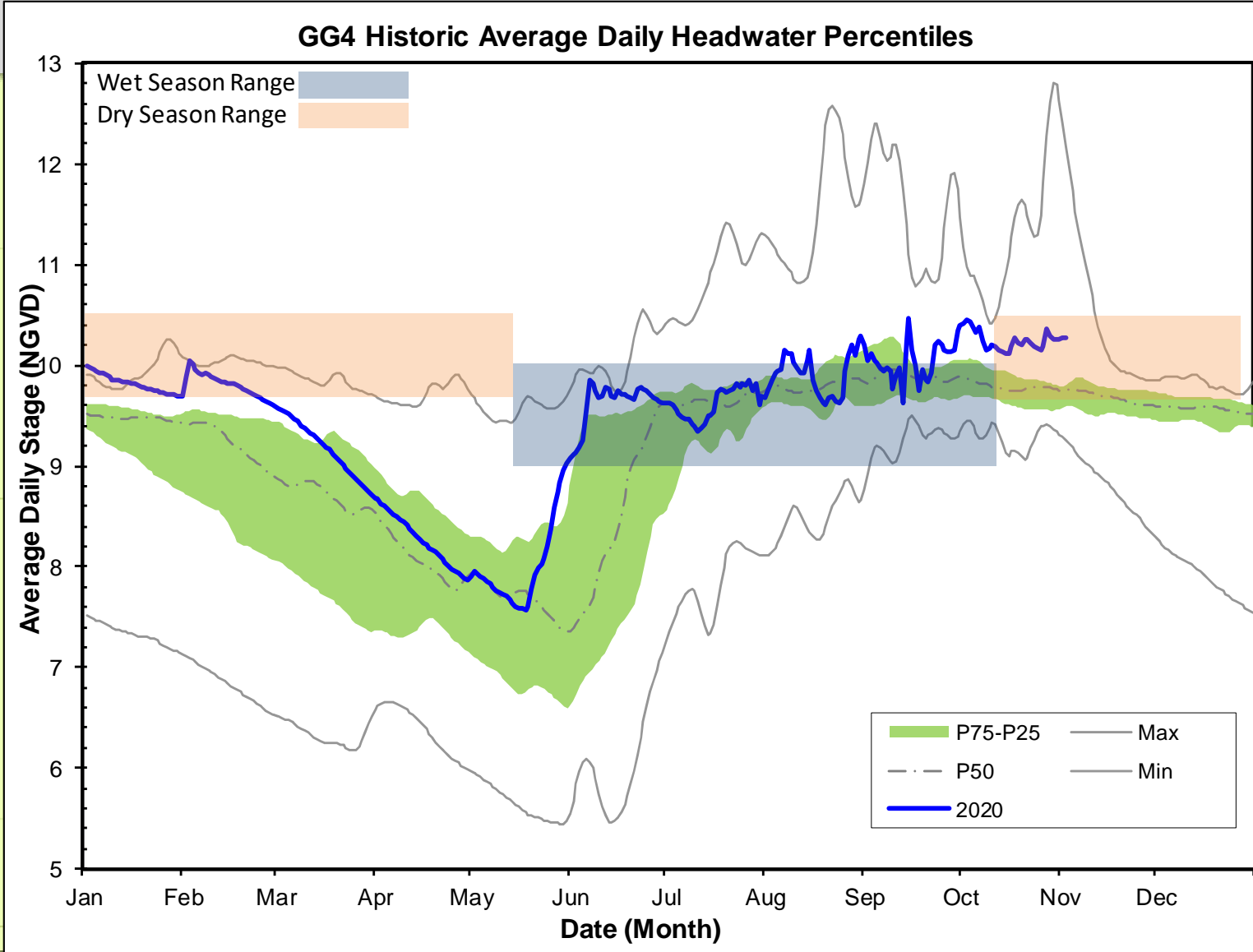
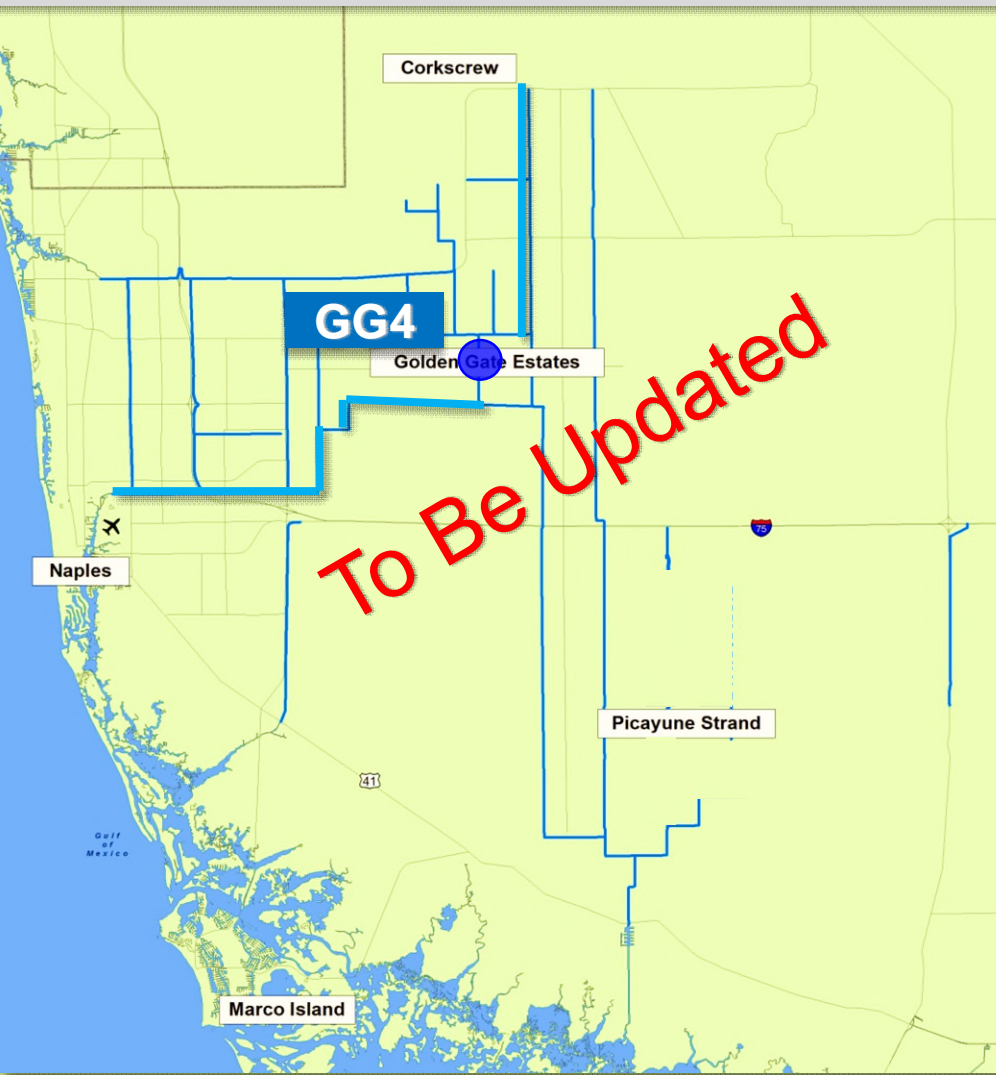


GG1 Historic Average Daily Headwater Percentiles



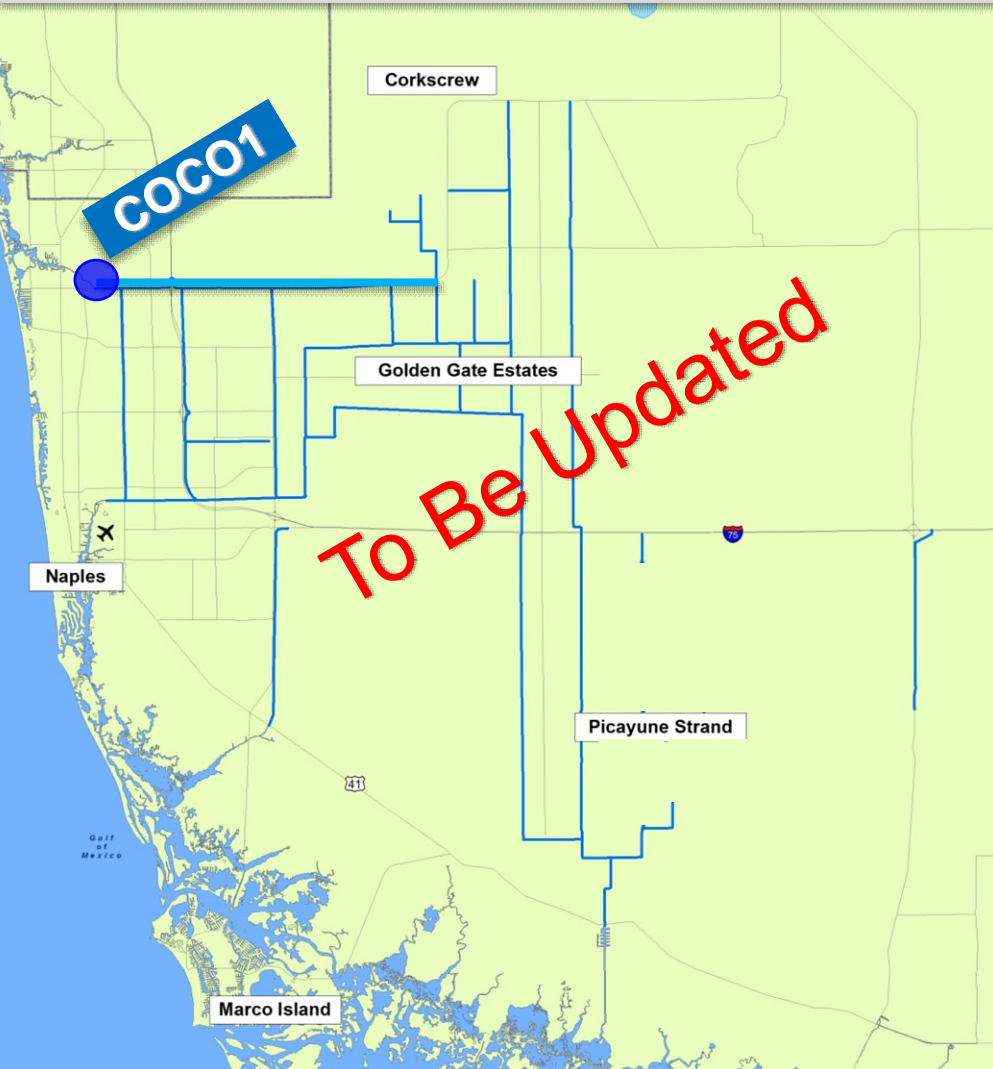
BCB Canal Levels ~ Daily Average Track

GOLDEN GATE MAIN

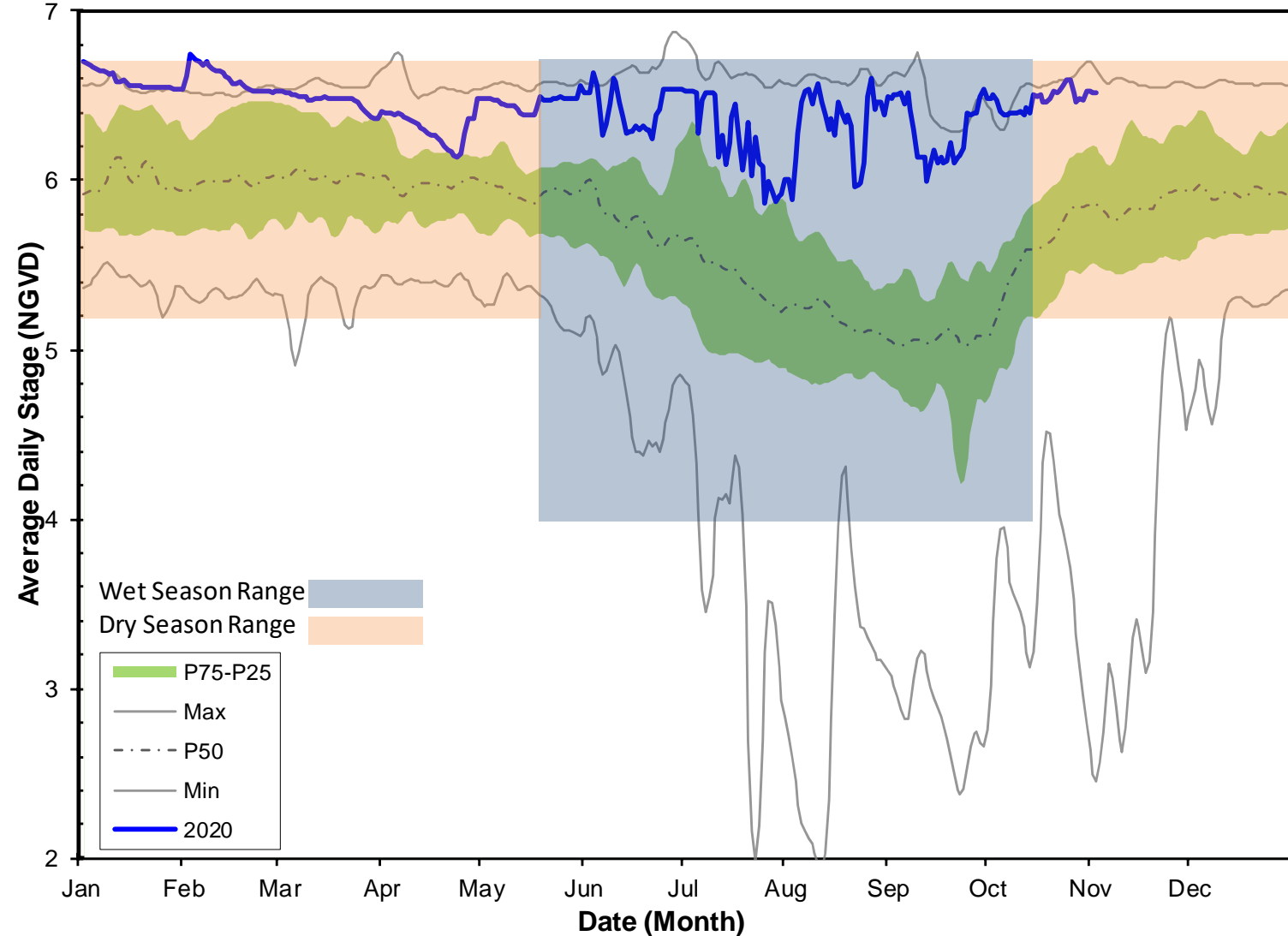


BCB Canal Levels ~ Daily Average Track

COCO HATCHEE CANAL

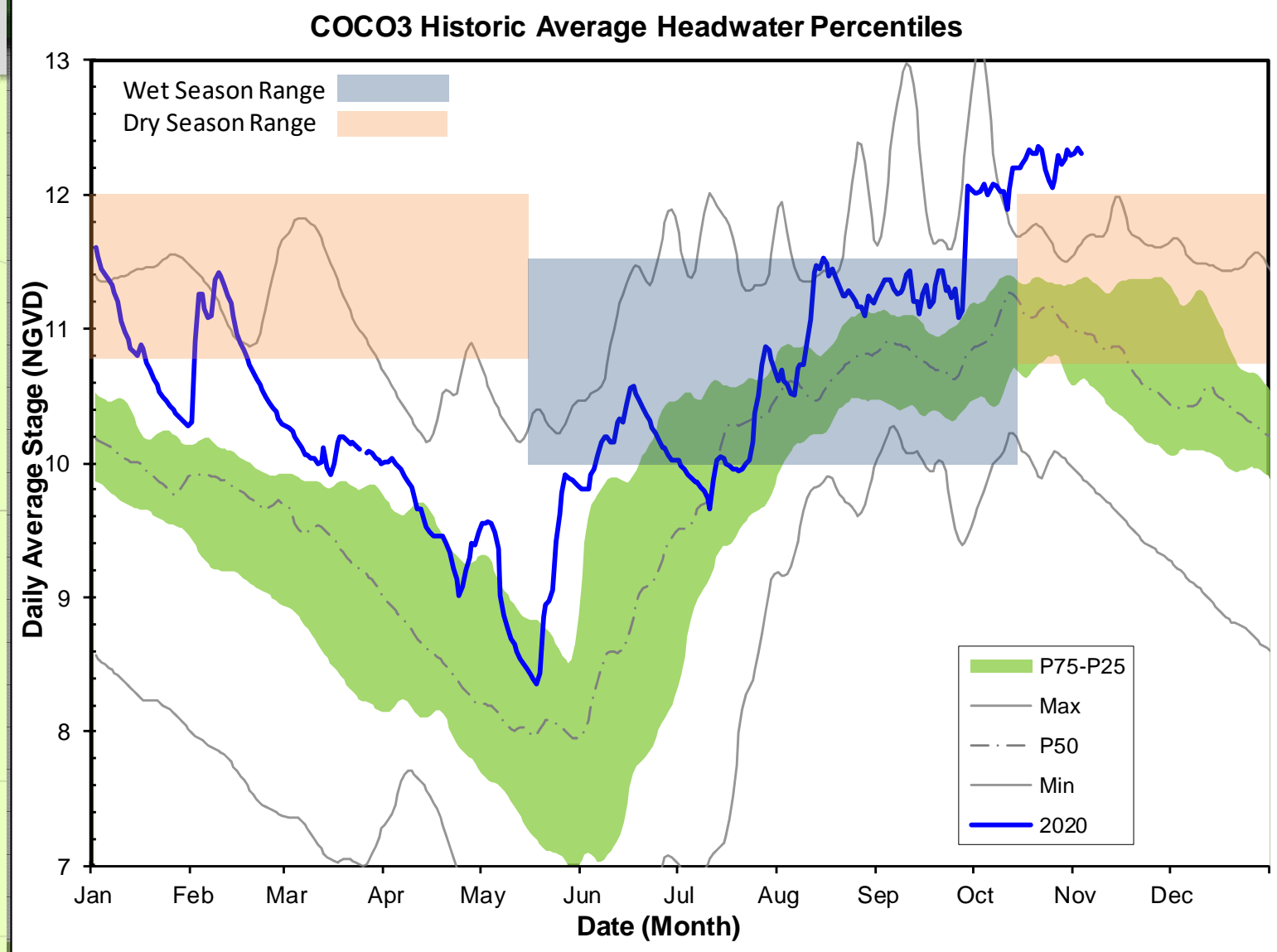
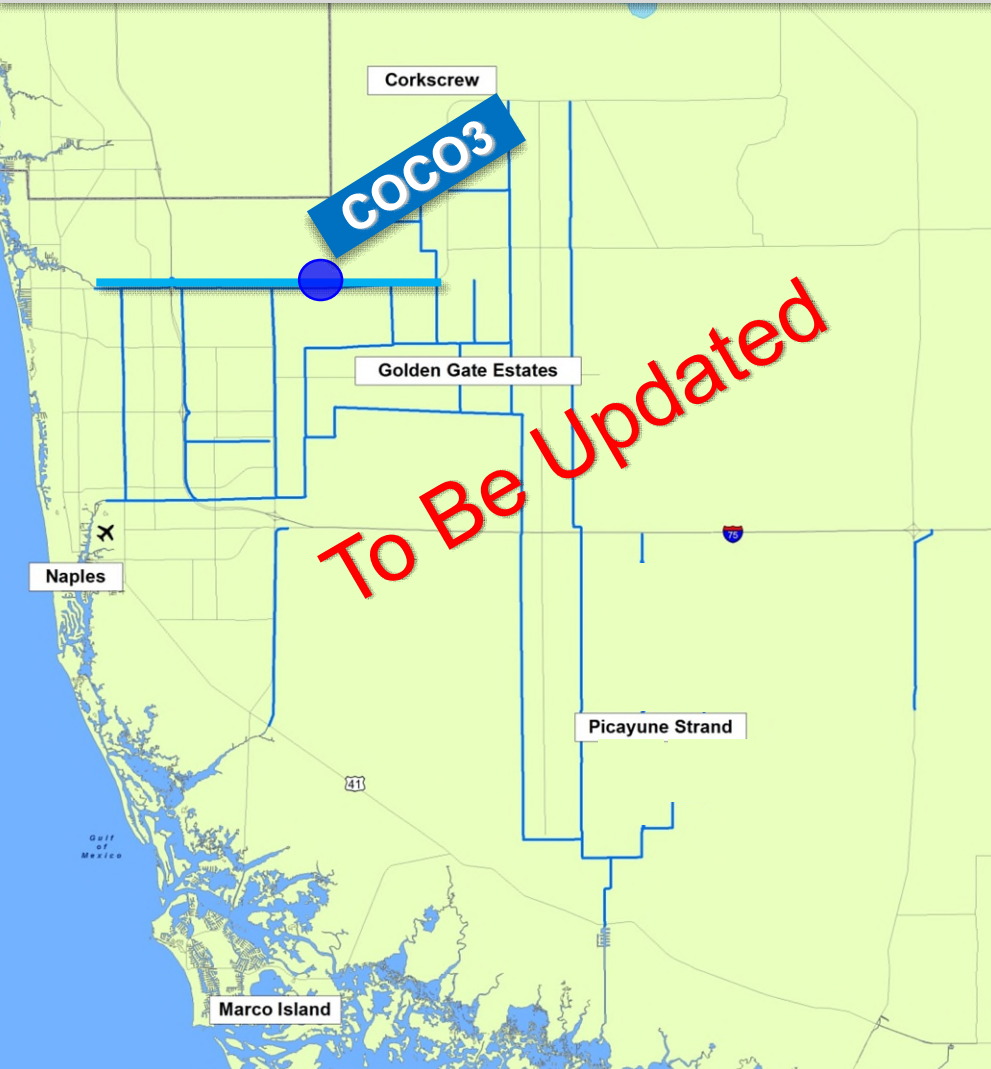


COCO1 Historic Daily Headwater Percentiles



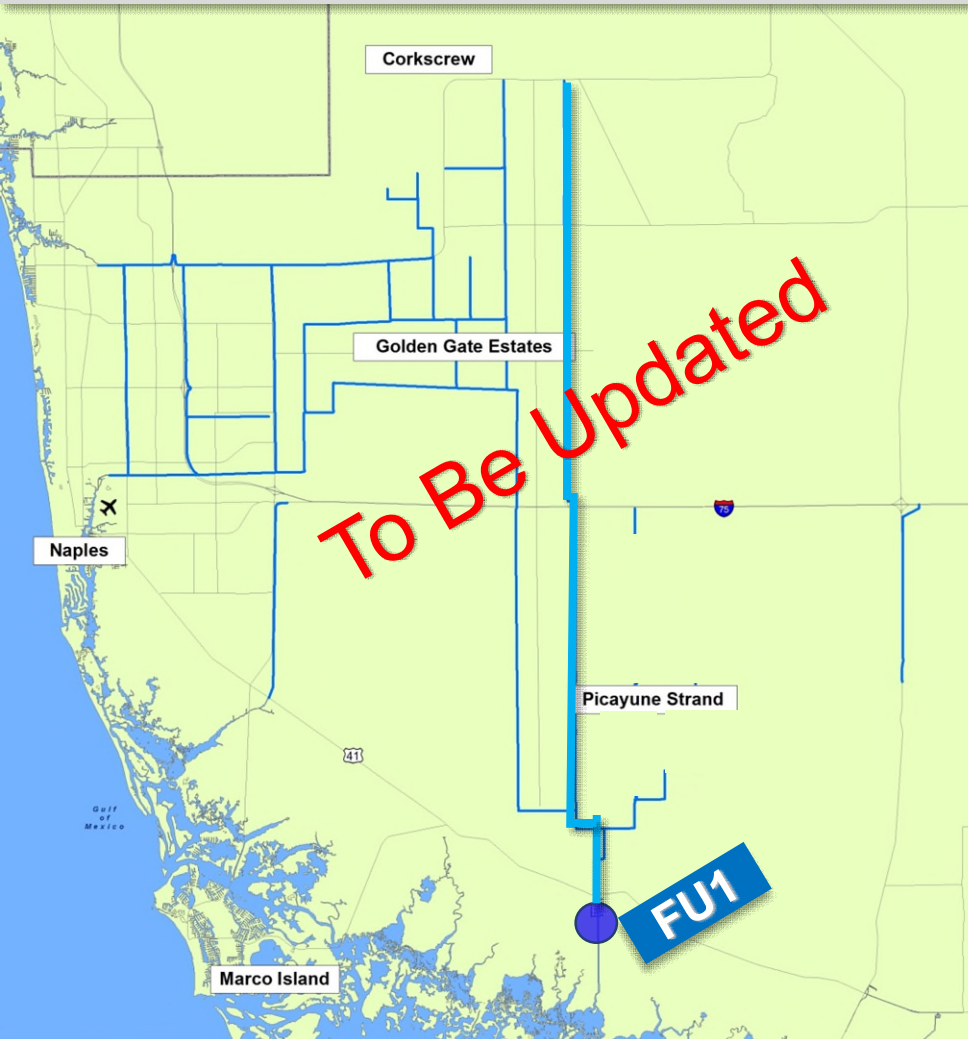
BCB Canal Levels ~ Daily Average Track

COCO HATCHEE CANAL

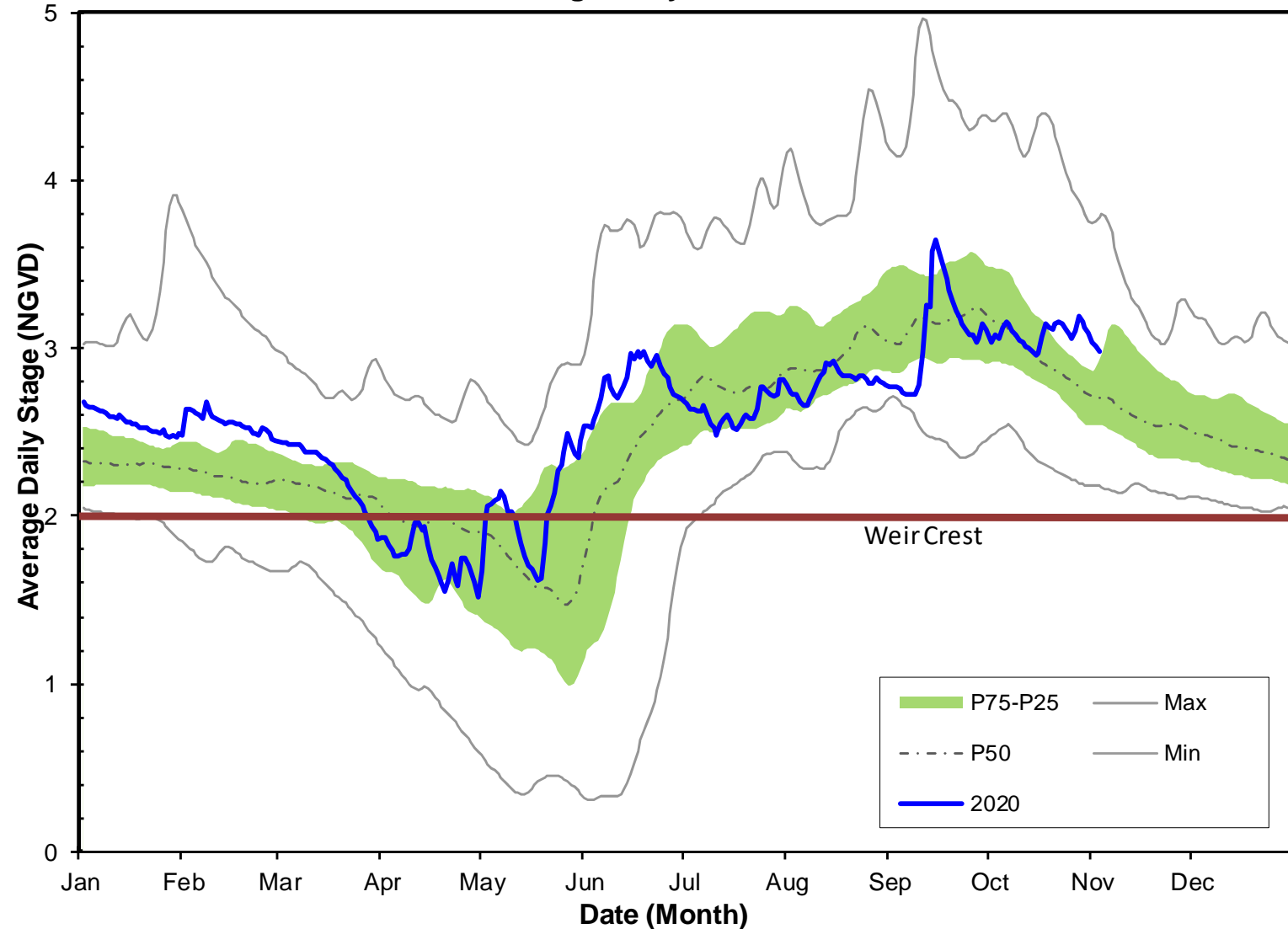


BCB Canal Levels ~ Daily Average Track

FAKA UNION CANAL

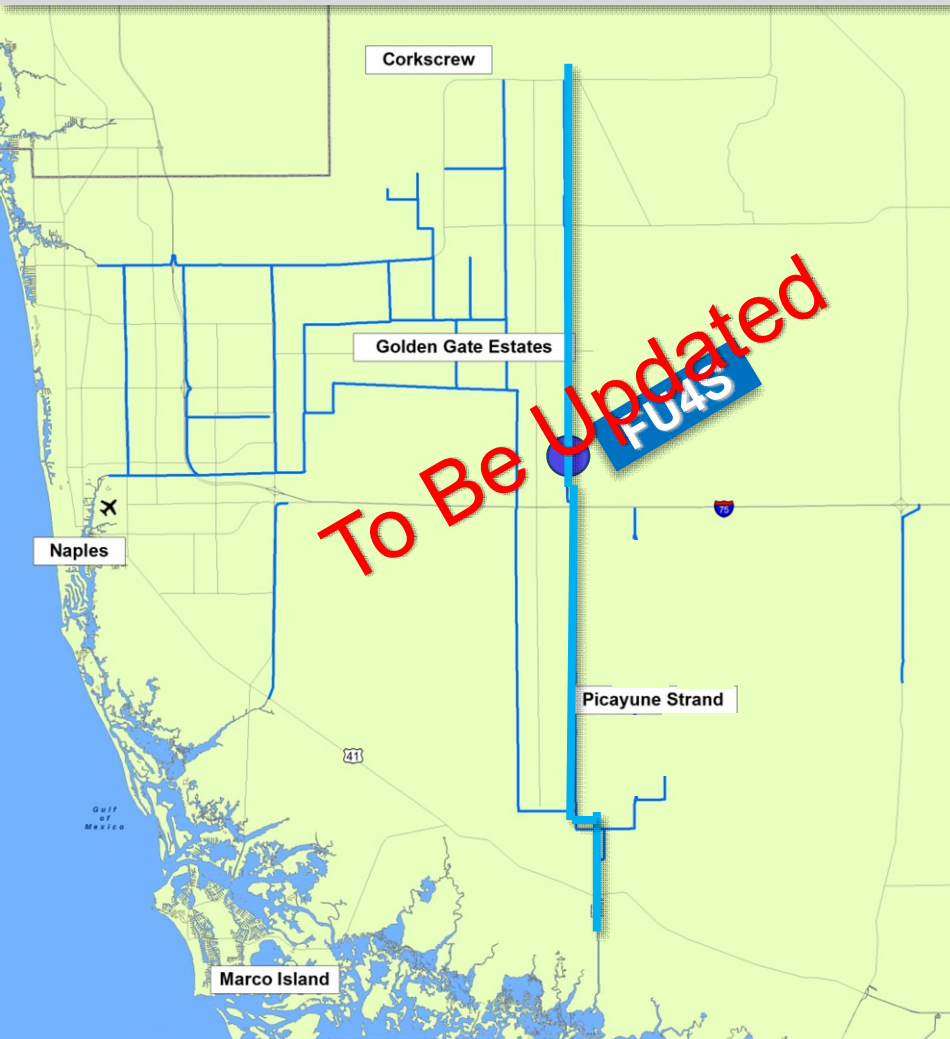


FU1 Historic Average Daily Headwater Percentiles

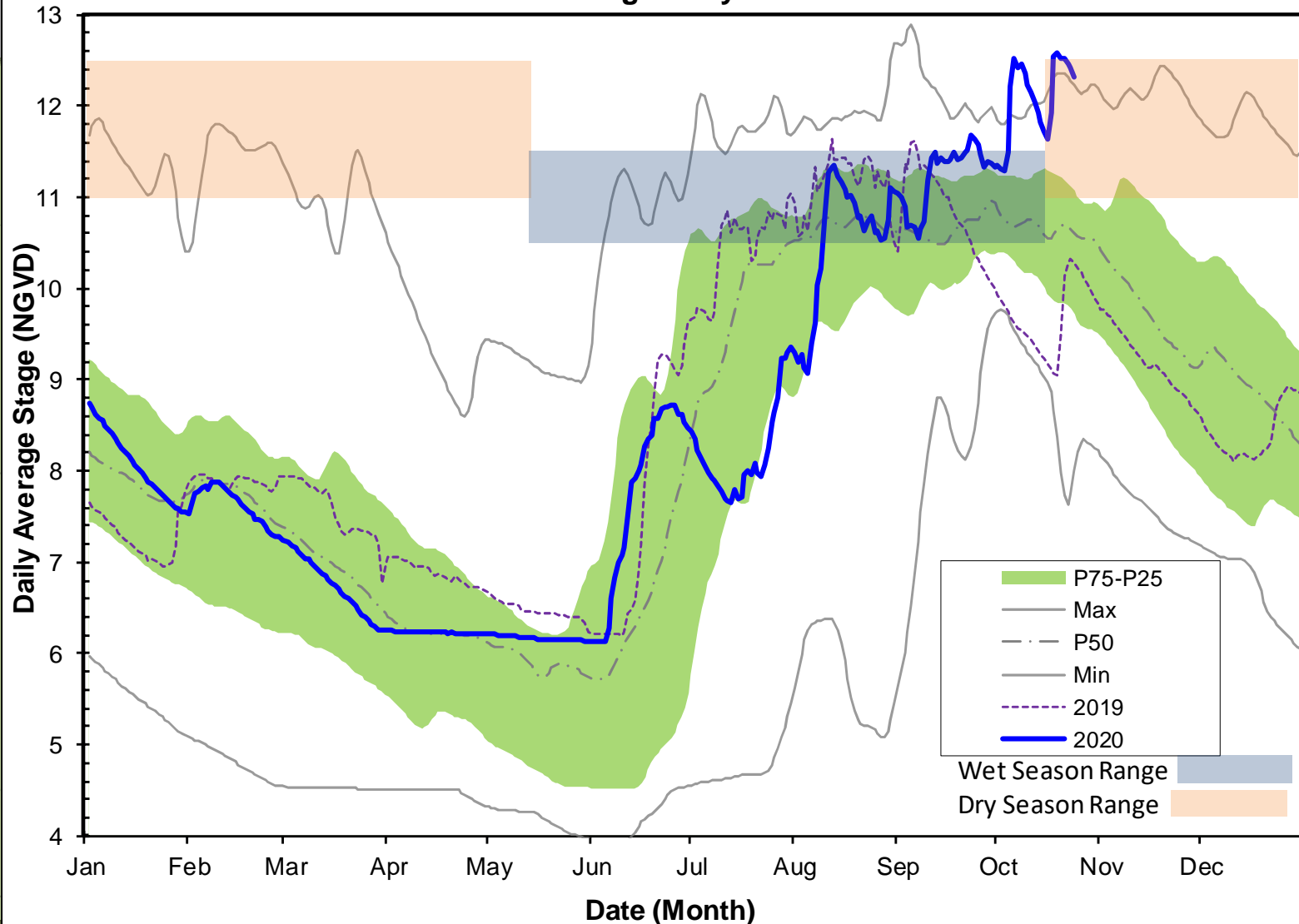


BCB Canal Levels ~ Daily Average Track

FAKA UNION CANAL

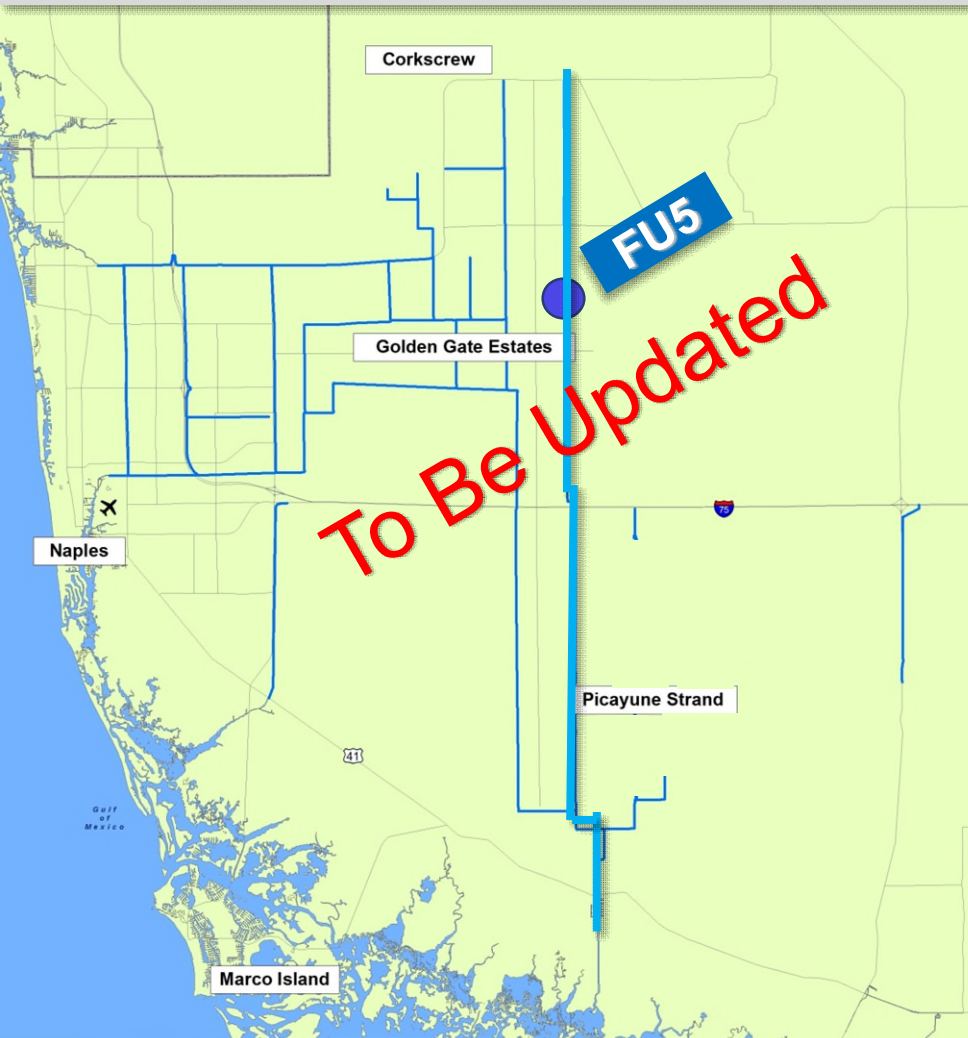


FU4S Historic Average Daily Water Percentiles

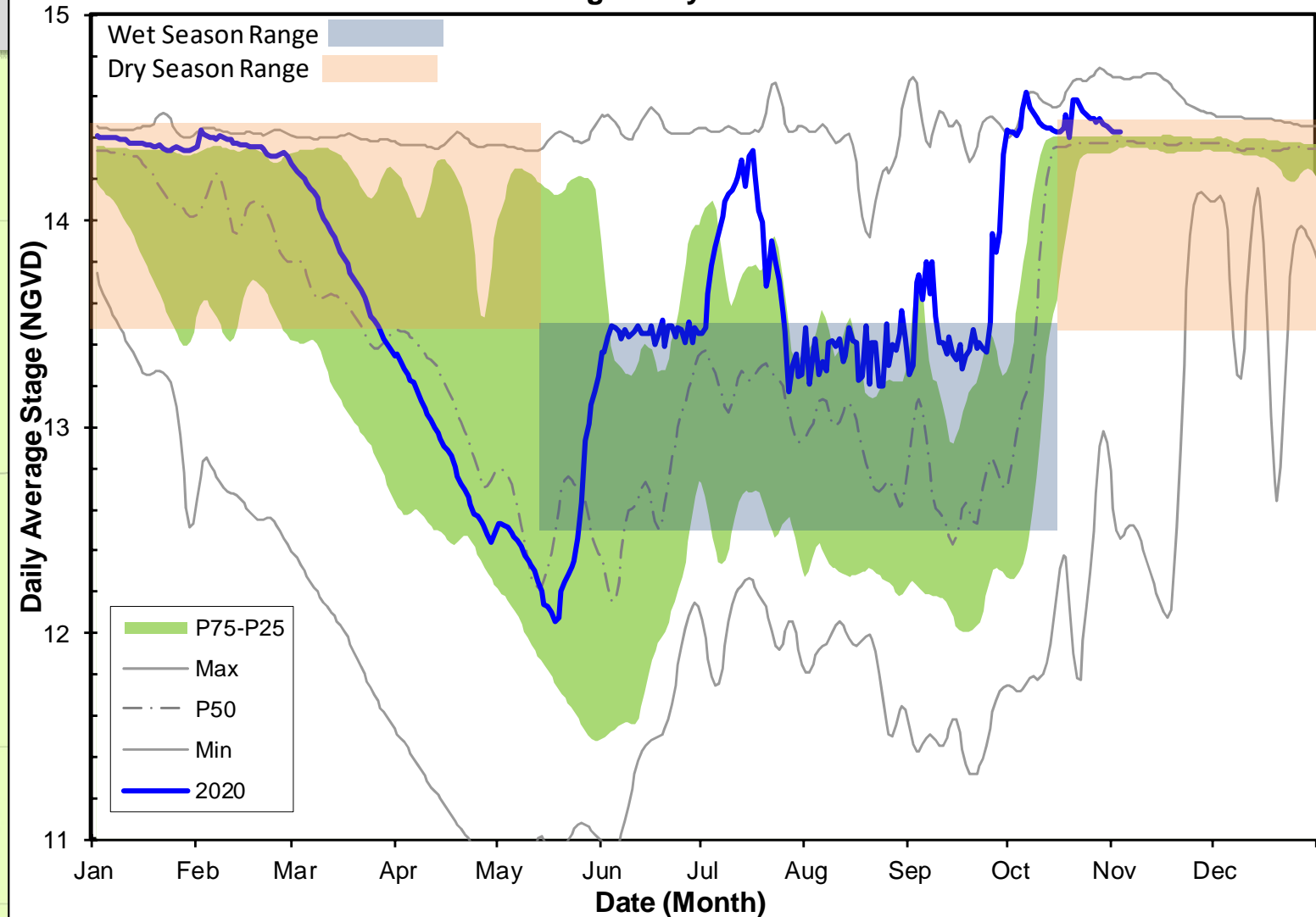


BCB Canal Levels ~ Daily Average Track

FAKA UNION CANAL

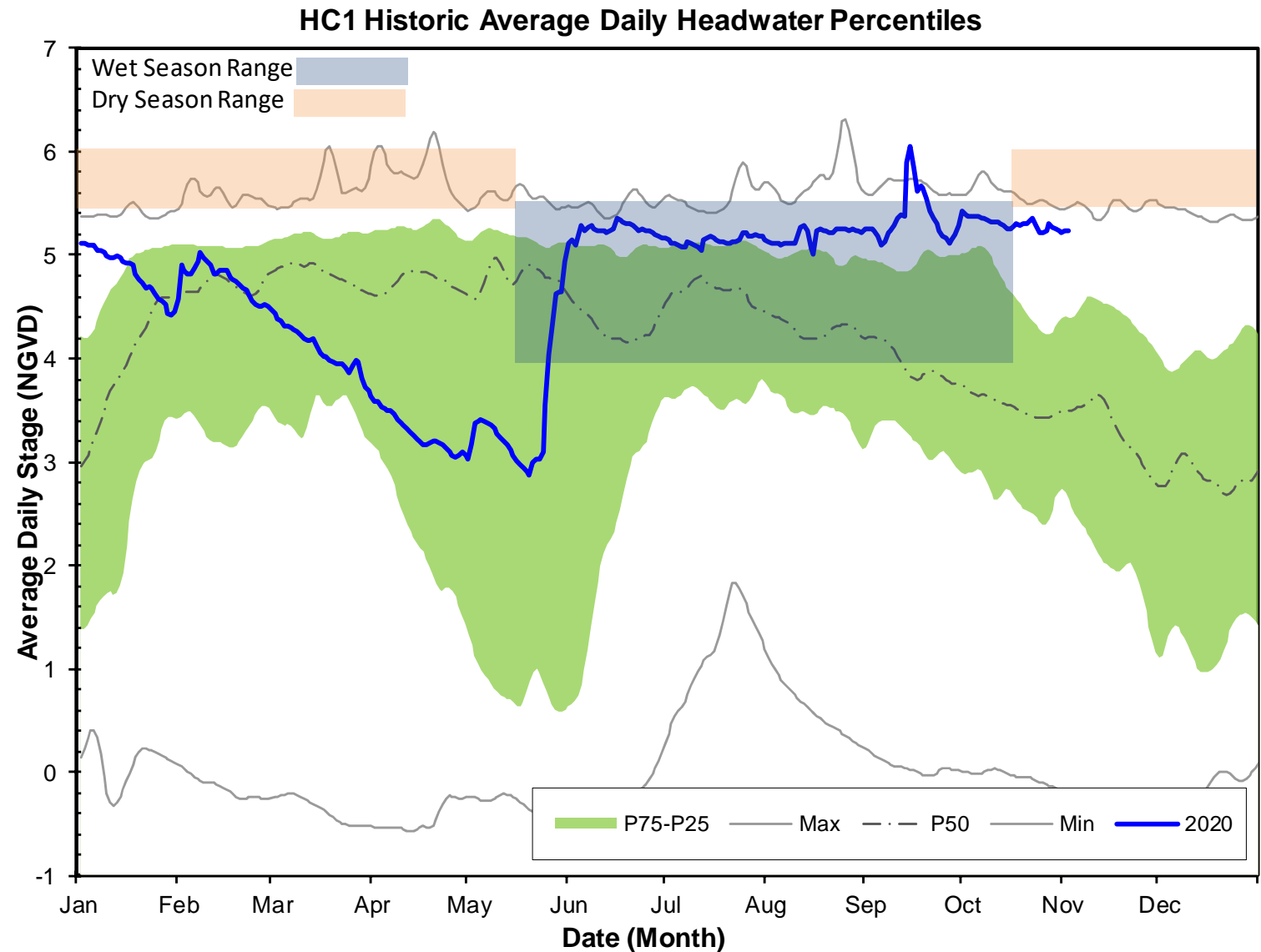
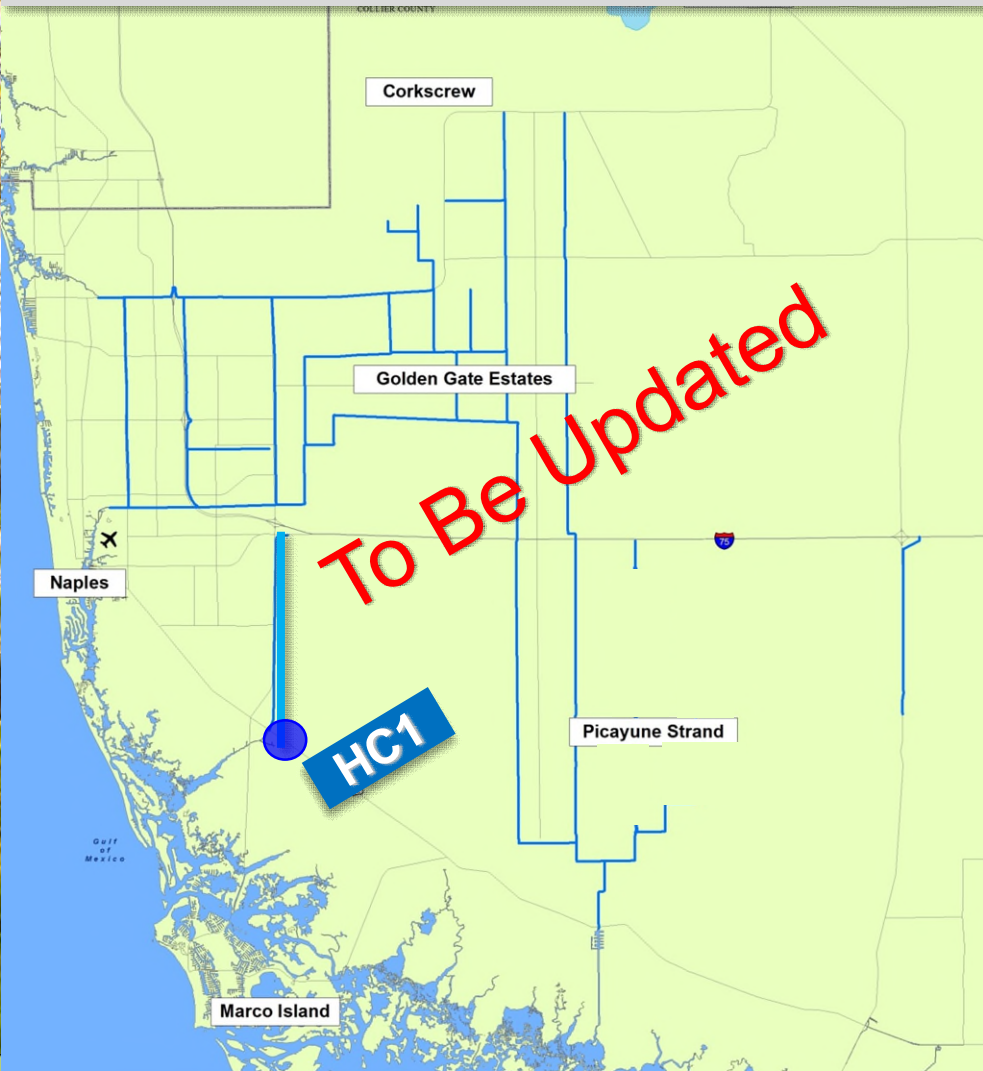


FU5 Historic Average Daily Headwater Percentiles



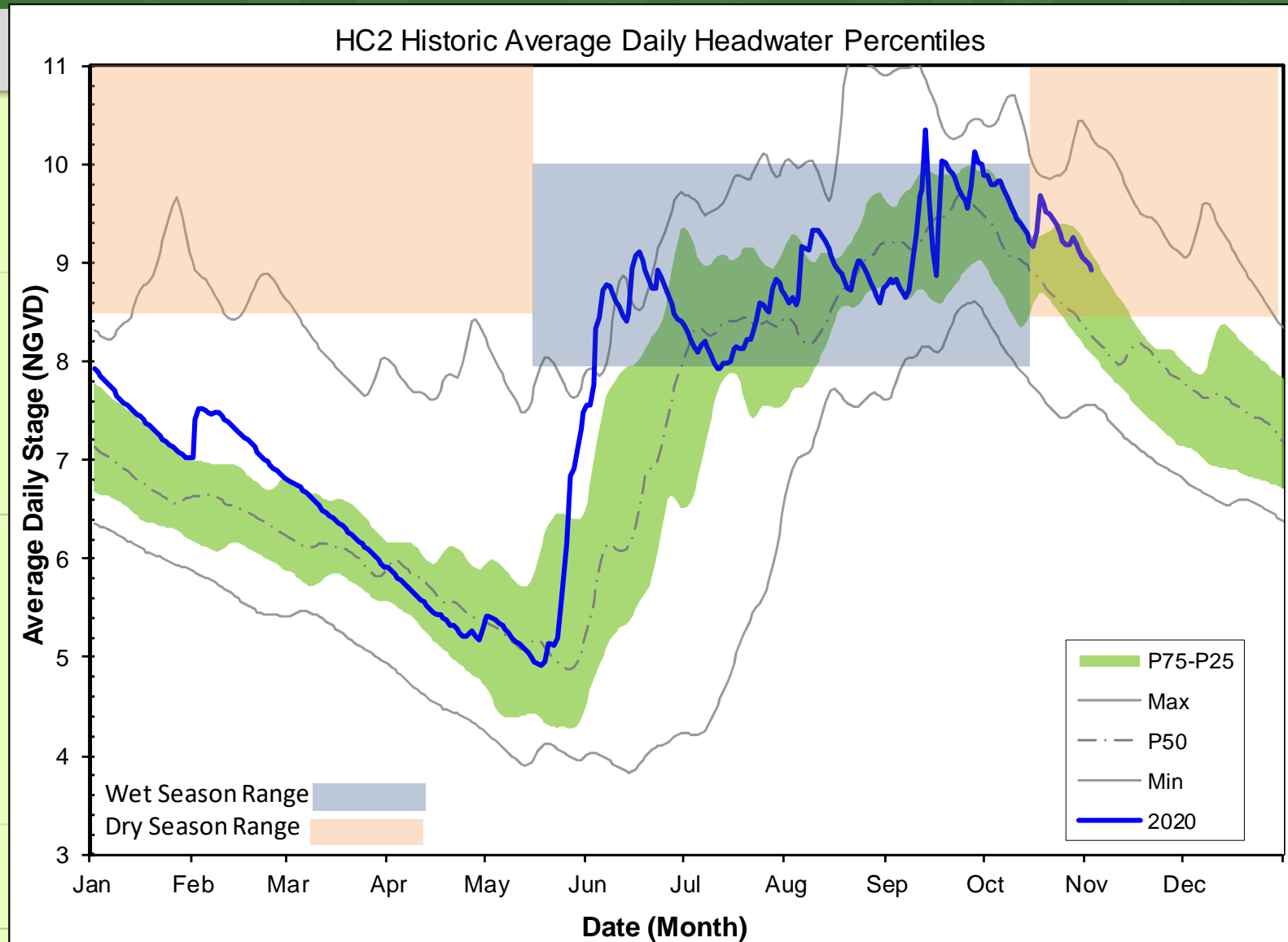
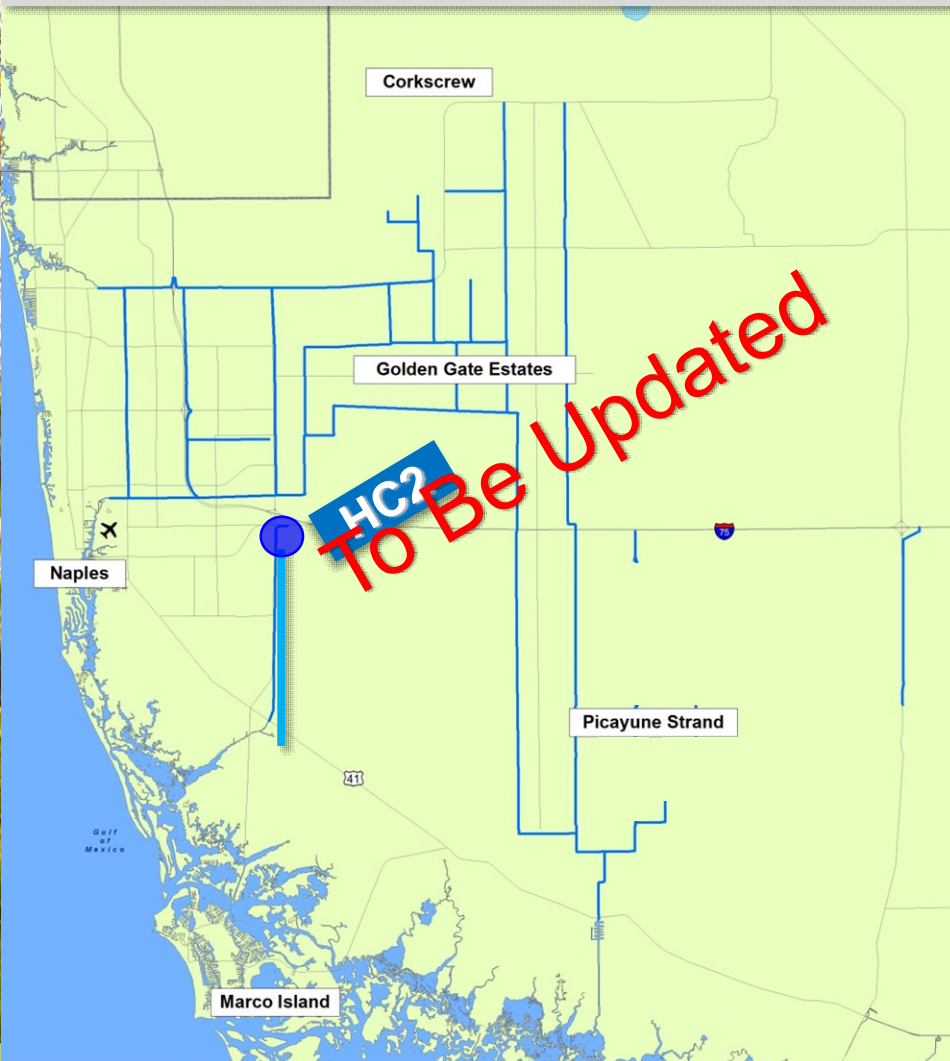
BCB Canal Levels ~ Daily Average Track

HENDERSON CREEK



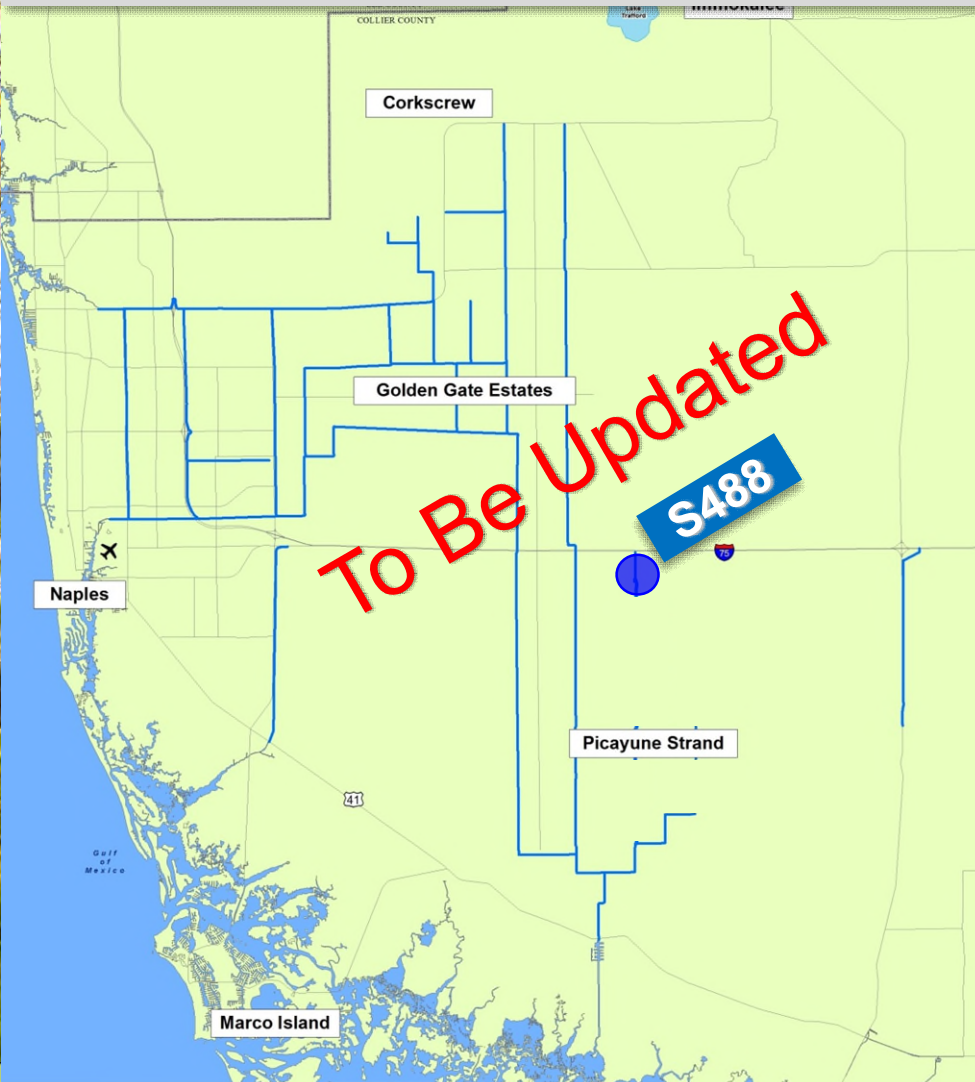
BCB Canal Levels ~ Daily Average Track

HENDERSON CREEK

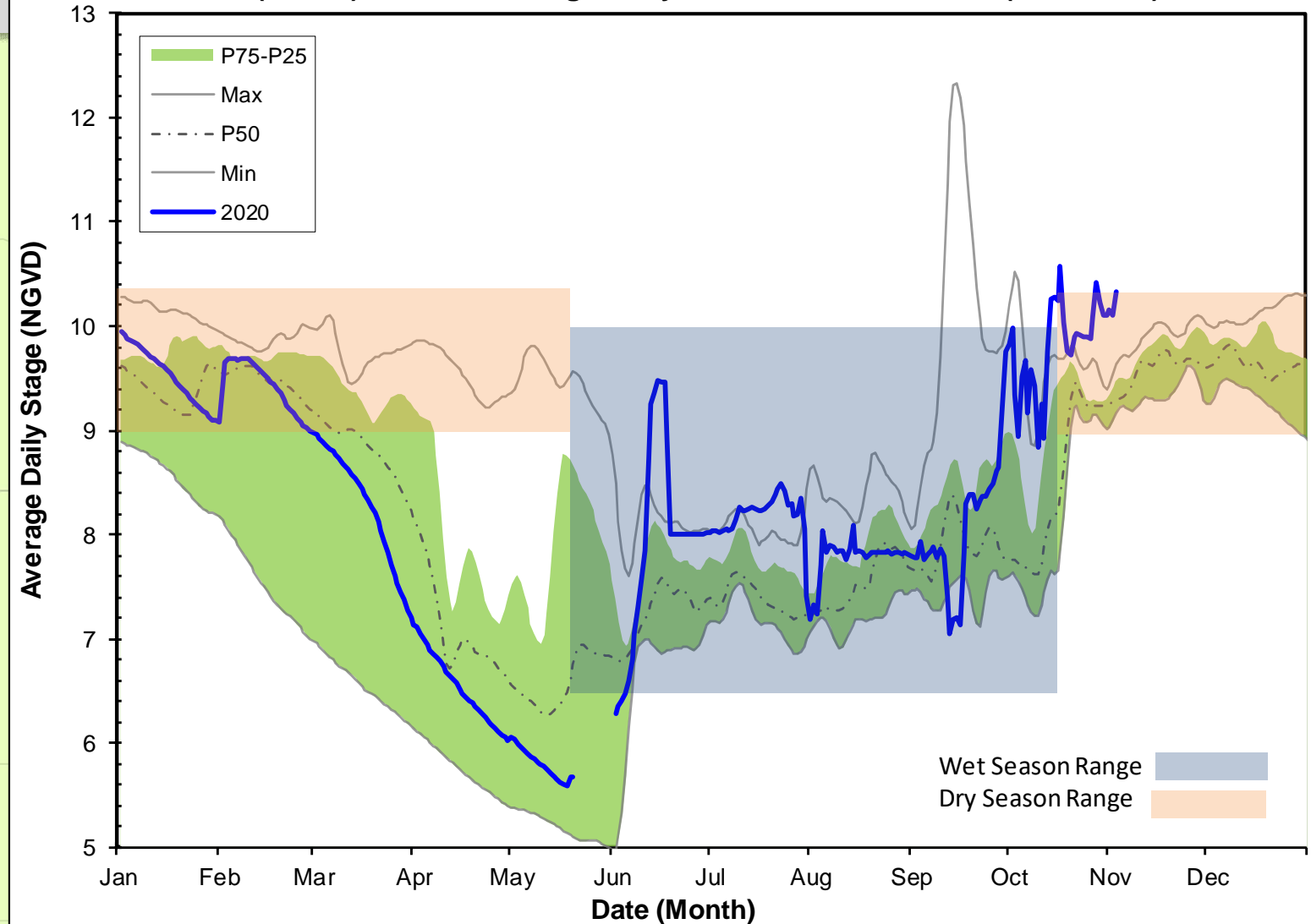


CERP PSRP Operations ~ Daily Average Stage

MERRITT PUMP STATION

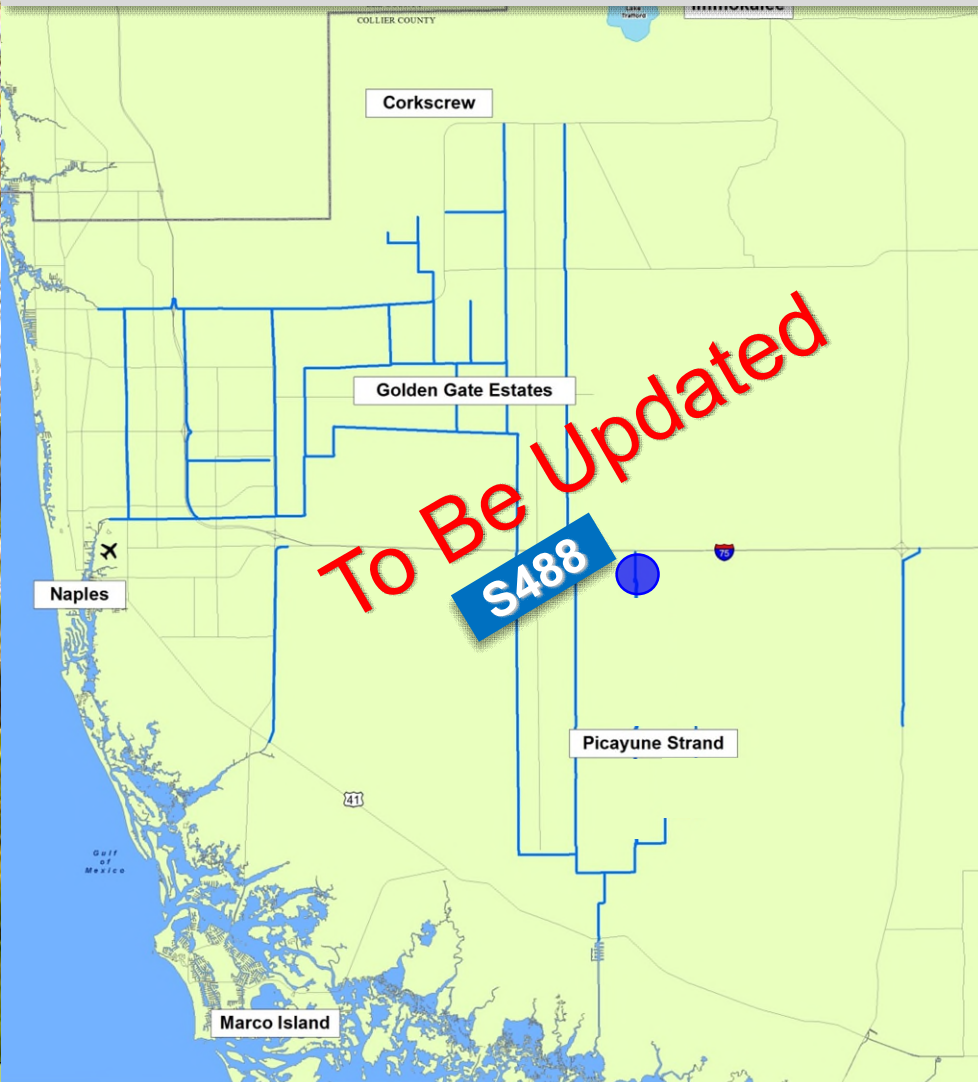


S488 (Merritt) Historic Average Daily Headwater Percentiles (2015-2019)

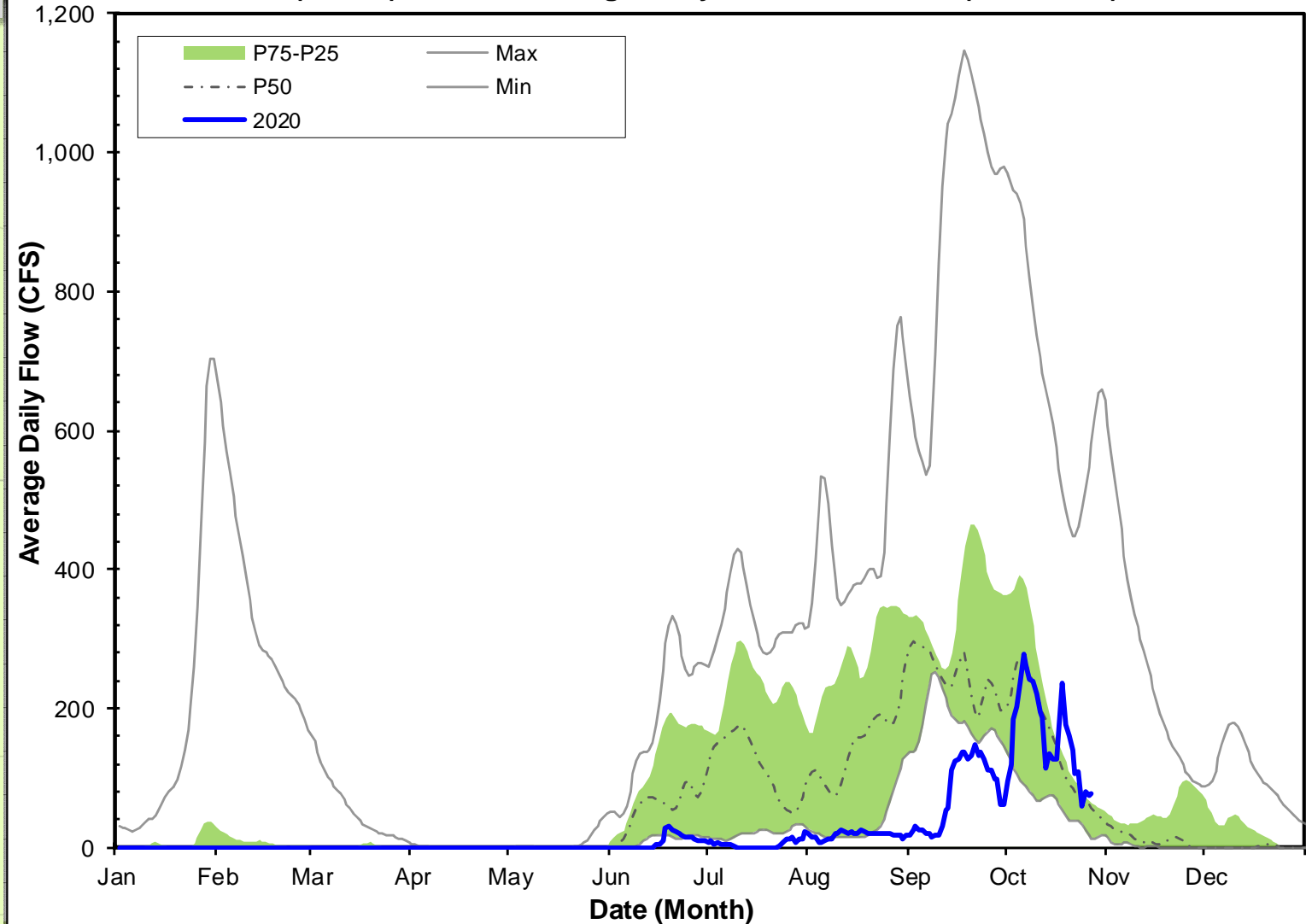


CERP PSRP Operations ~ Daily Average Flow

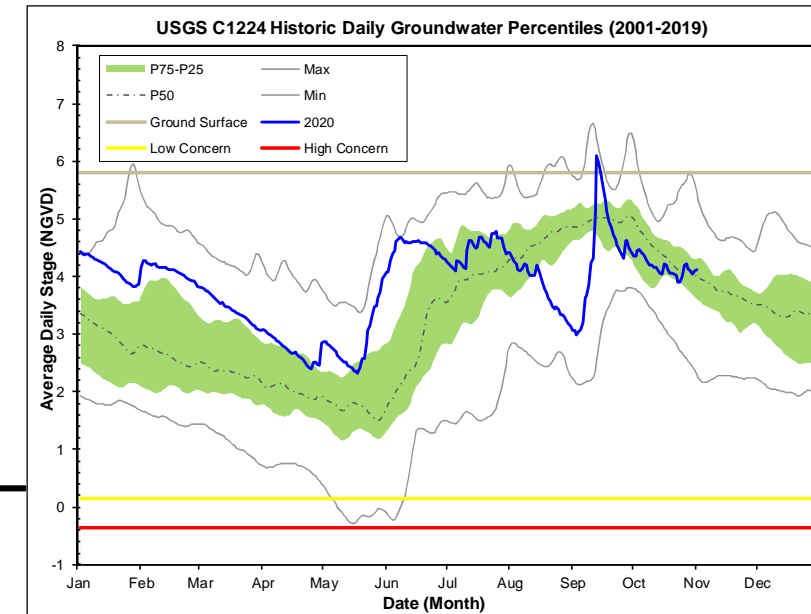
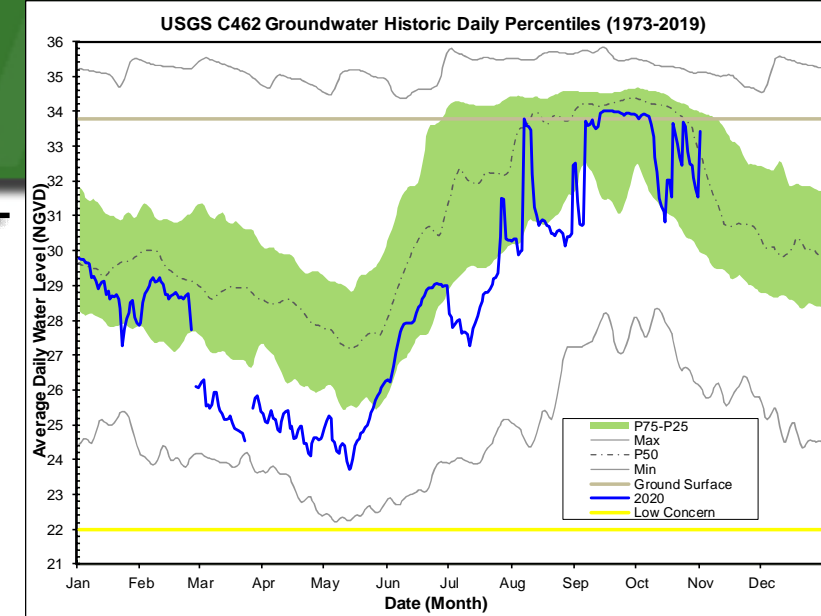
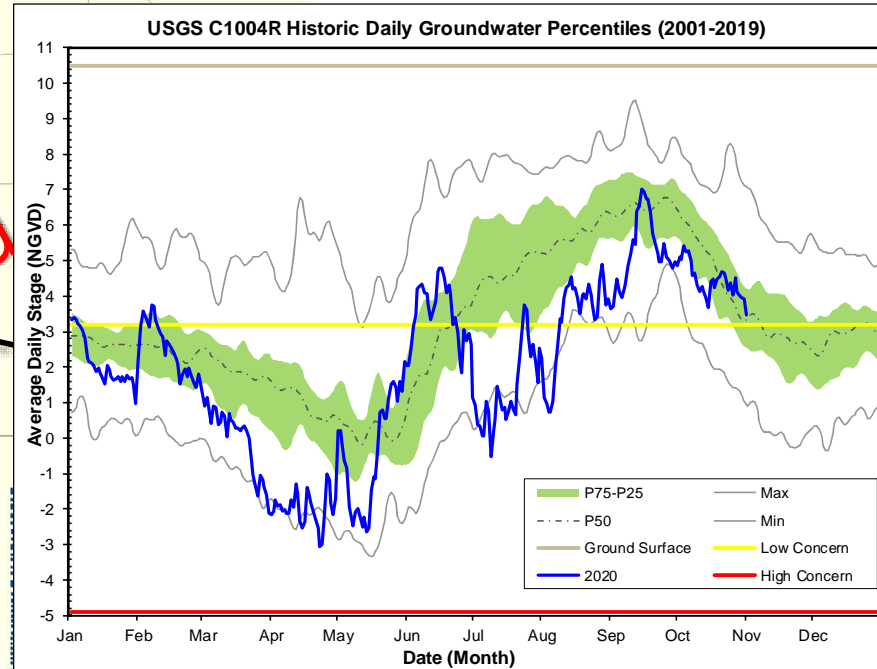
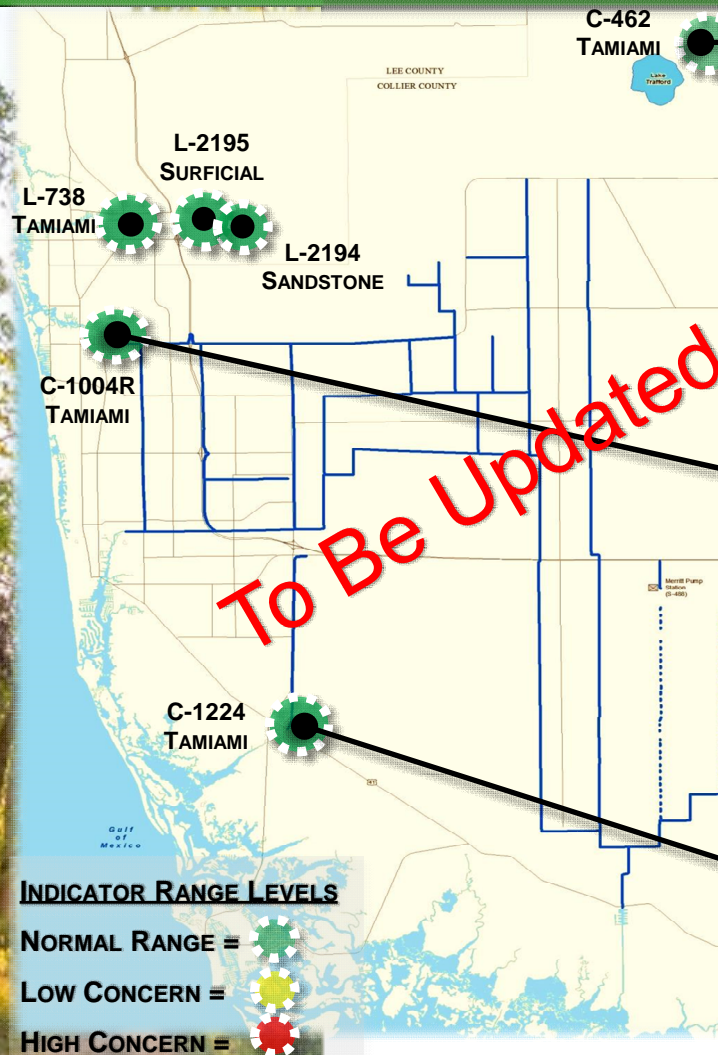
MERRITT PUMP STATION



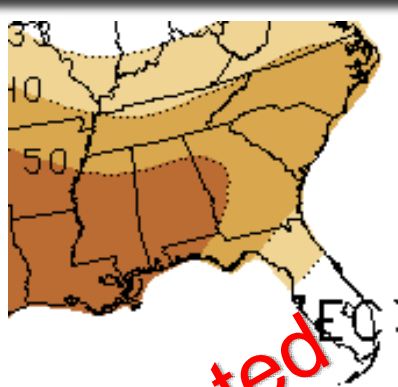
S488 (Merritt) Historic Average Daily Flow Percentiles (2015-2019)



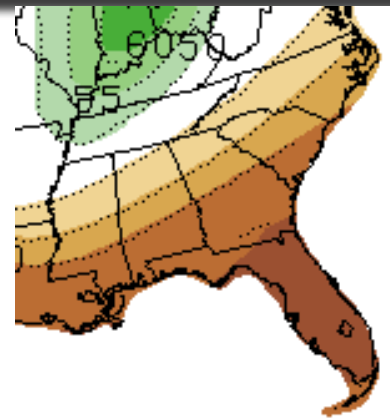
Groundwater Level Trends



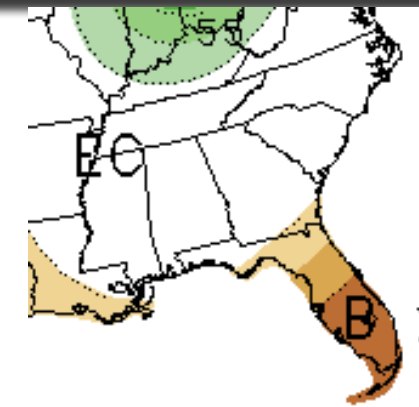
Long-Range Precipitation Outlook



November 2020

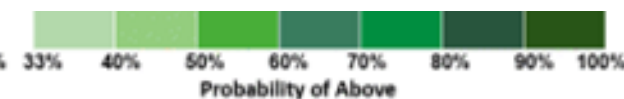
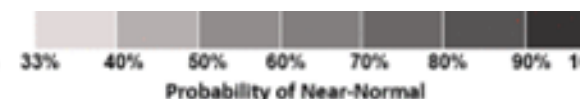
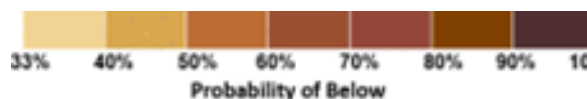


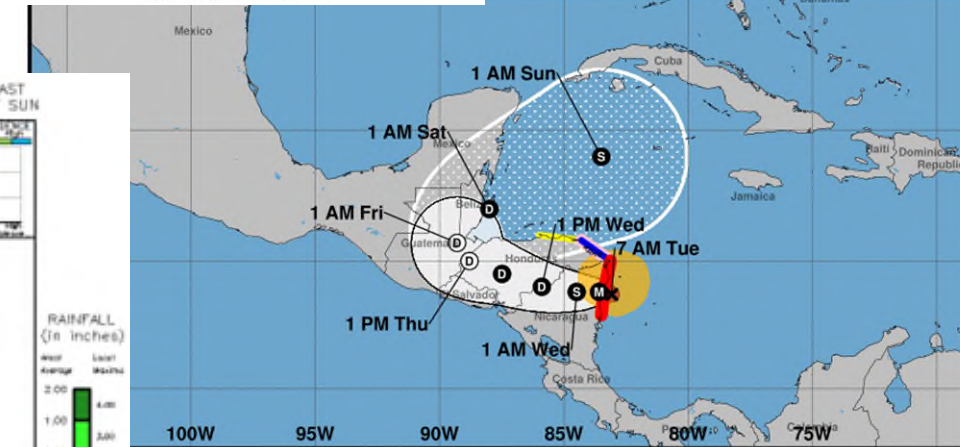
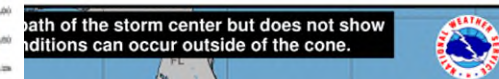
Dec. 2020 – Feb. 2021



Mar. 2021 – May 2021

- The most recent CPC precipitation outlook for November 2020 calls for equal chances for above, below, or average rainfall for south Florida.
- The CPC precipitation outlook for December - February calls for above average chance for below-normal rainfall.
- The CPC precipitation outlook for March - May calls for above average chance for below-normal rainfall.





Forecast positions:
 ● Tropical Cyclone ○ Post/Potential TC
 Sustained winds: D < 39 mph
 S 39-73 mph H 74-110 mph M > 110 mph

track area: Watches: Warnings: Current wind extent:

BCB Water Conditions Report

QUESTIONS ?



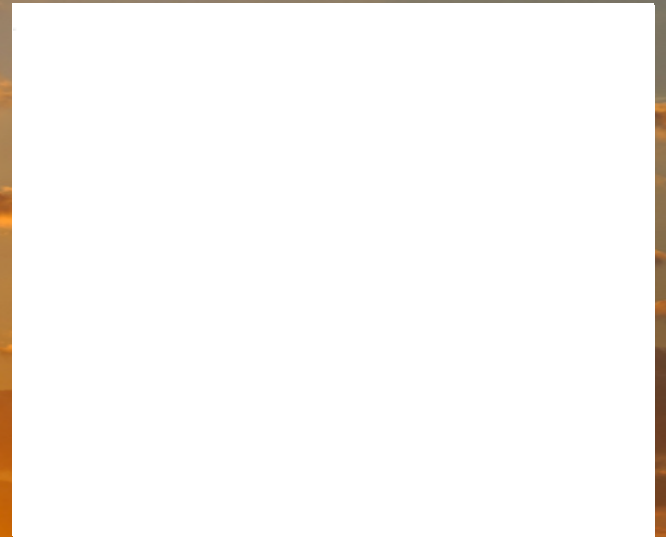
Public Comment on Item #13

If you're participating via Zoom –
use the Raise Hand feature

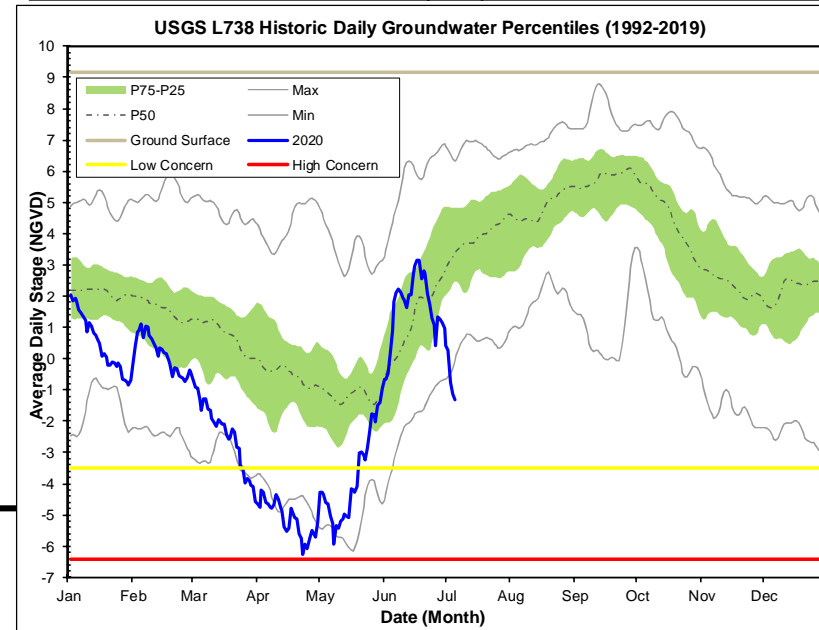
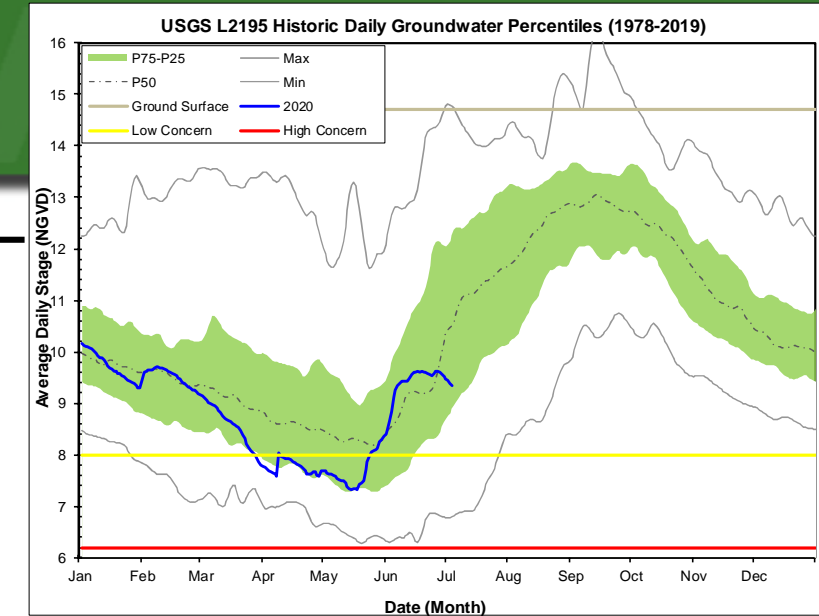
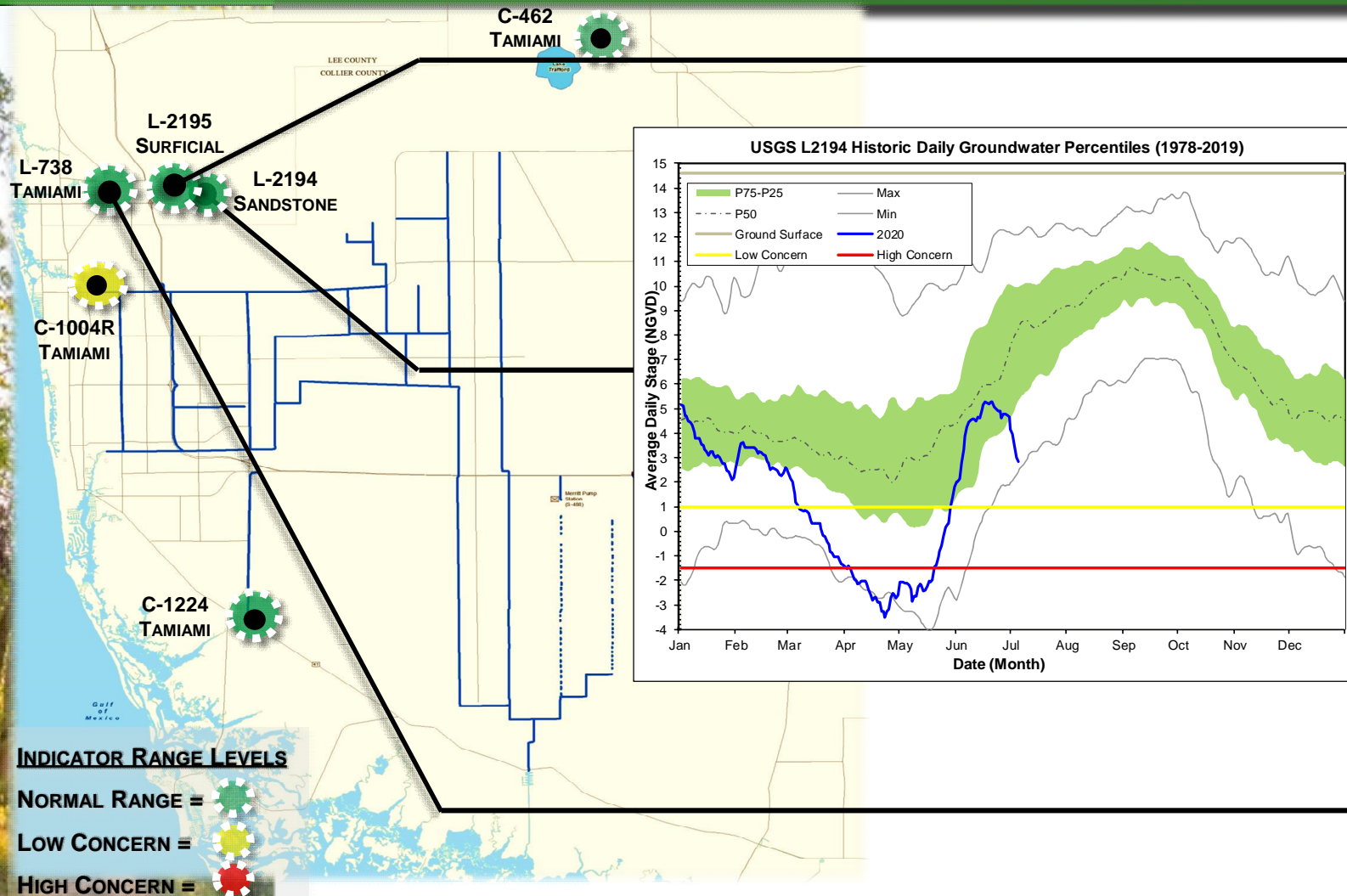
If you're participating via Phone –

*9 Raises Hand

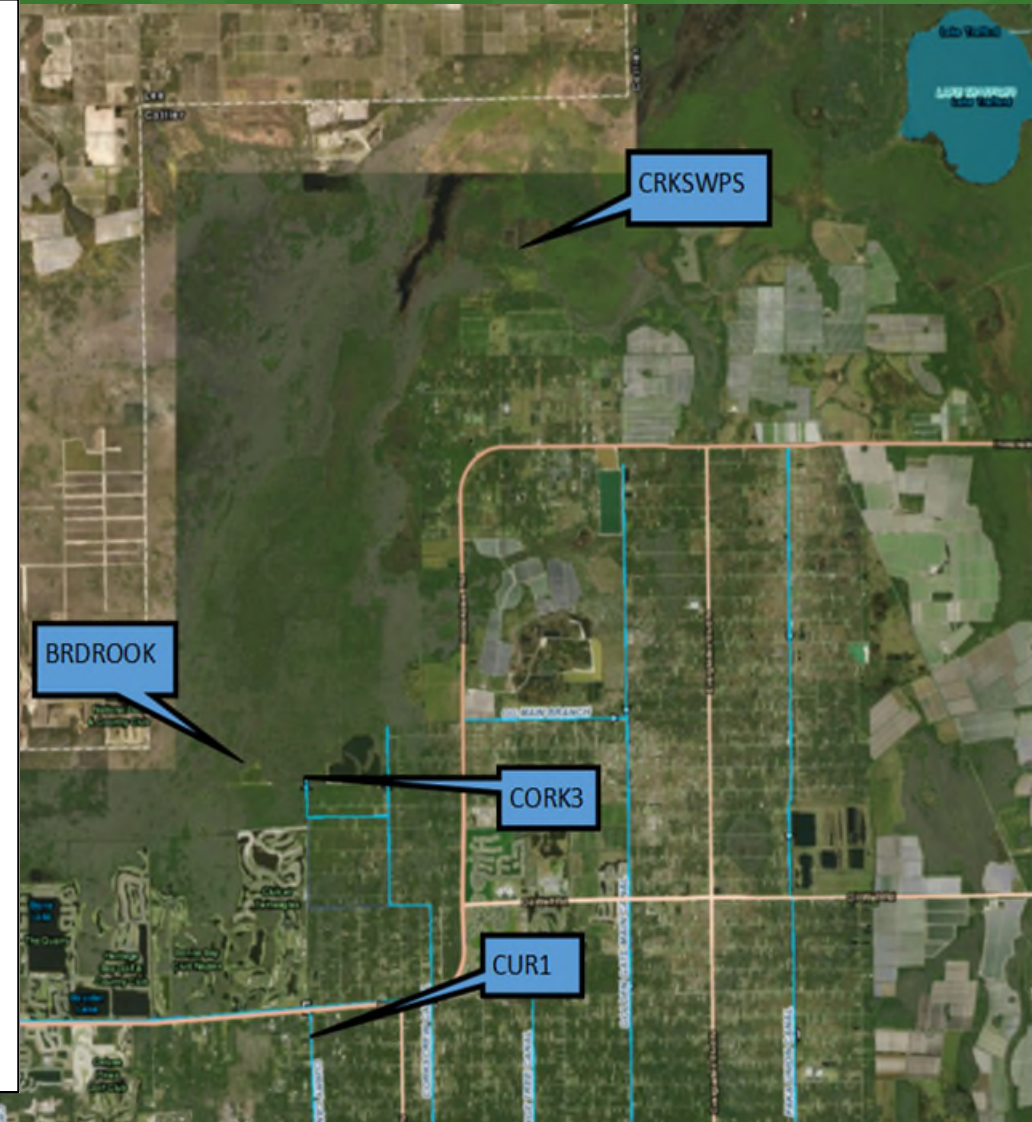
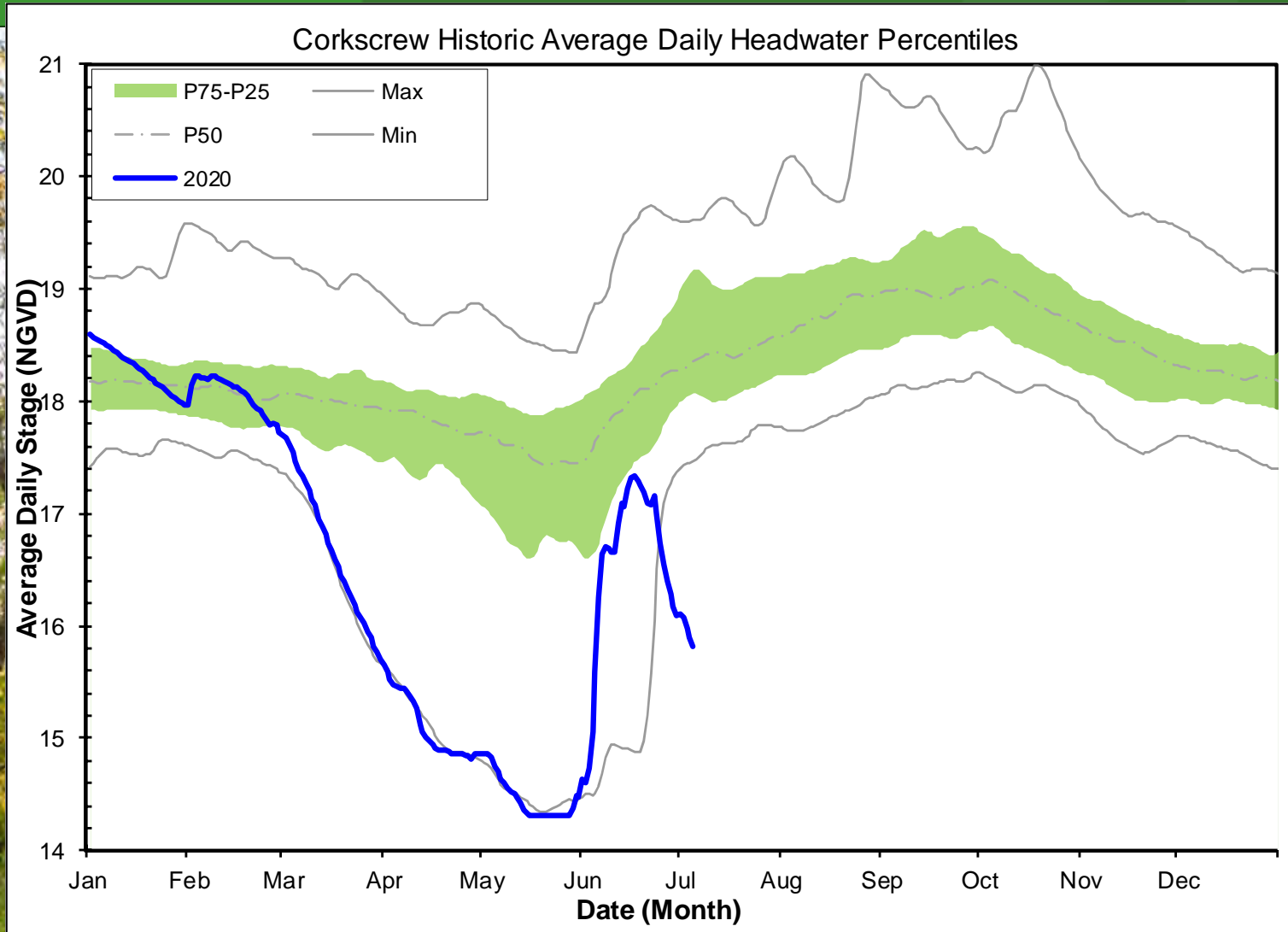
*6 Mutes/Unmutes



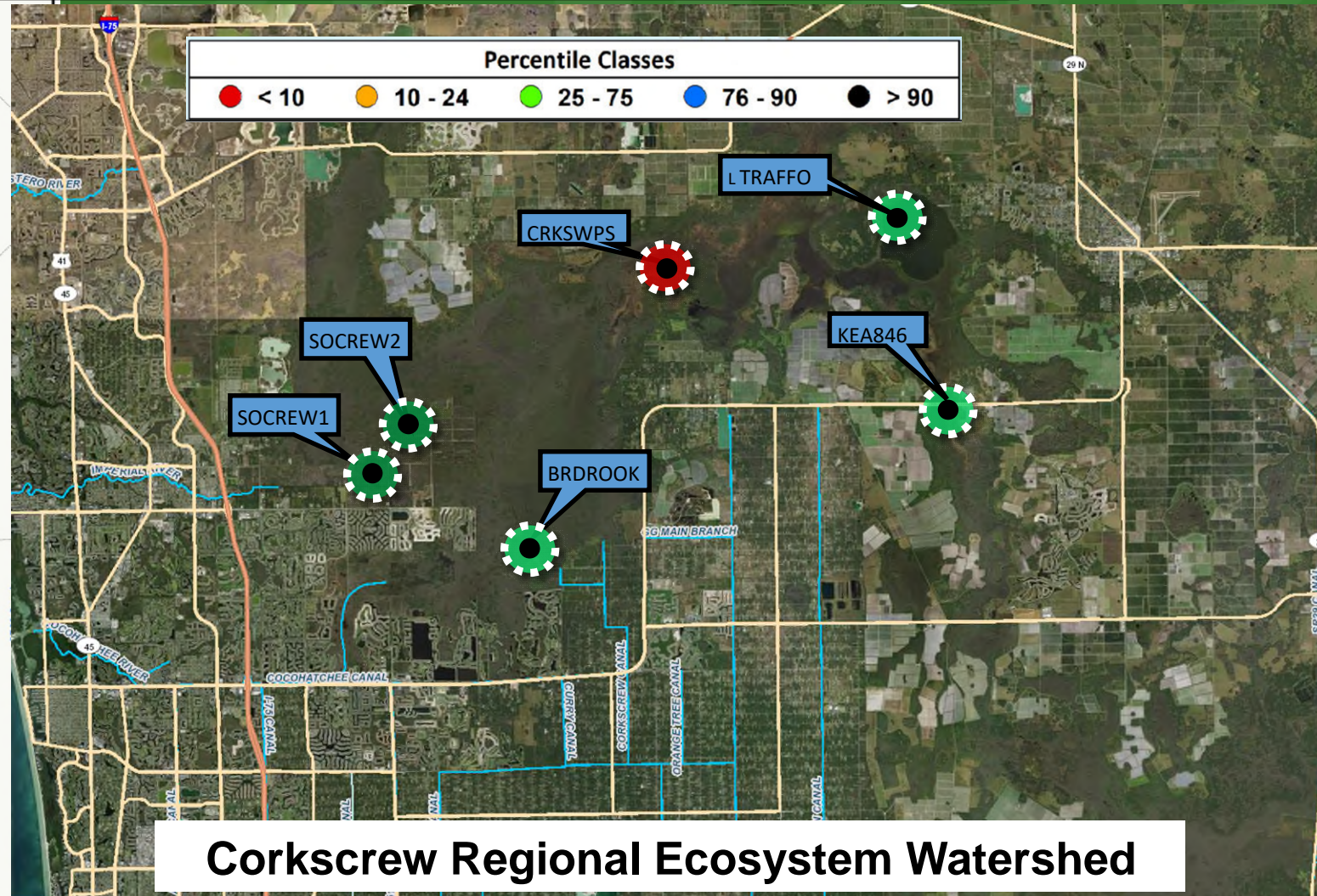
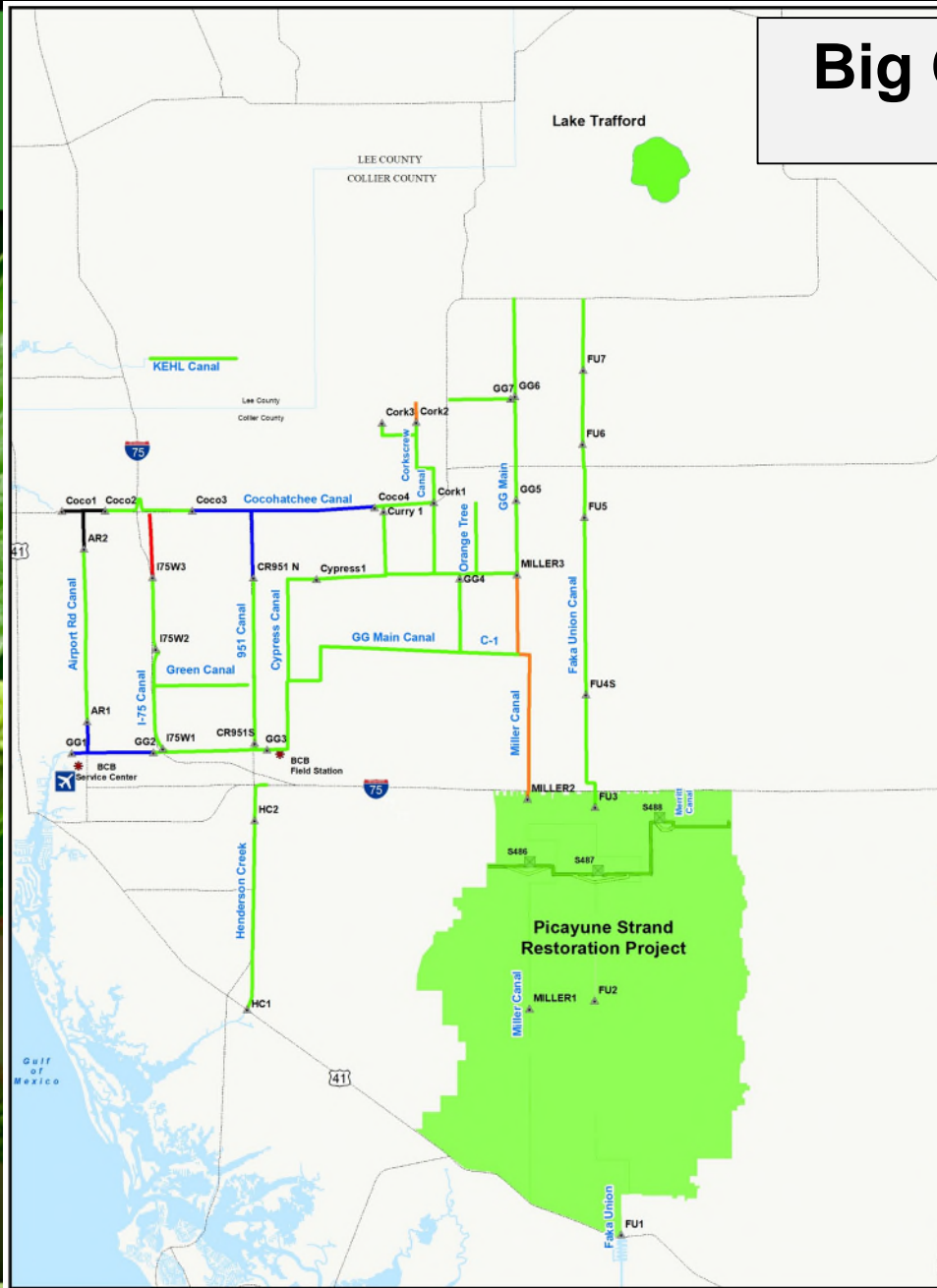
Groundwater Level Trends



Corkscrew Swamp Trend

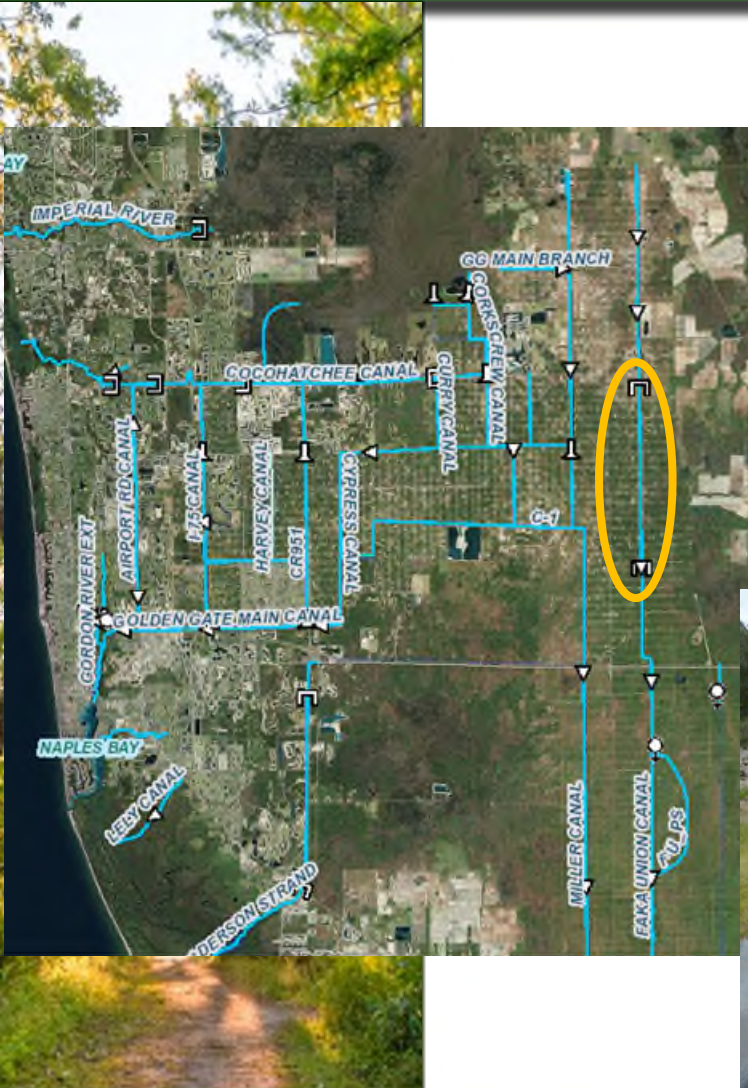


Big Cypress Basin Hydrologic Conditions as of 5/21/2020



Corkscrew Regional Ecosystem Watershed

Faka Union Drought Recovery



June 2020



May 2020

Faka Union Canal @ GG Blvd looking North

May 2009



May 2008



May 2009