

WESTERN EVERGLADES RESTORATION PROJECT (WERP)

Water Resources Accountability and Collaboration: Public Forum

Prepared by Zulamet Vega-Liriano

Jacksonville District, USACE

27 August 2020

"The views, opinions and findings contained in this report are those of the authors(s) and should not be construed as an official Department of the Army position, policy or decision, unless so designated by other official documentation."



**US Army Corps
of Engineers**



PRESENTATION OVERVIEW

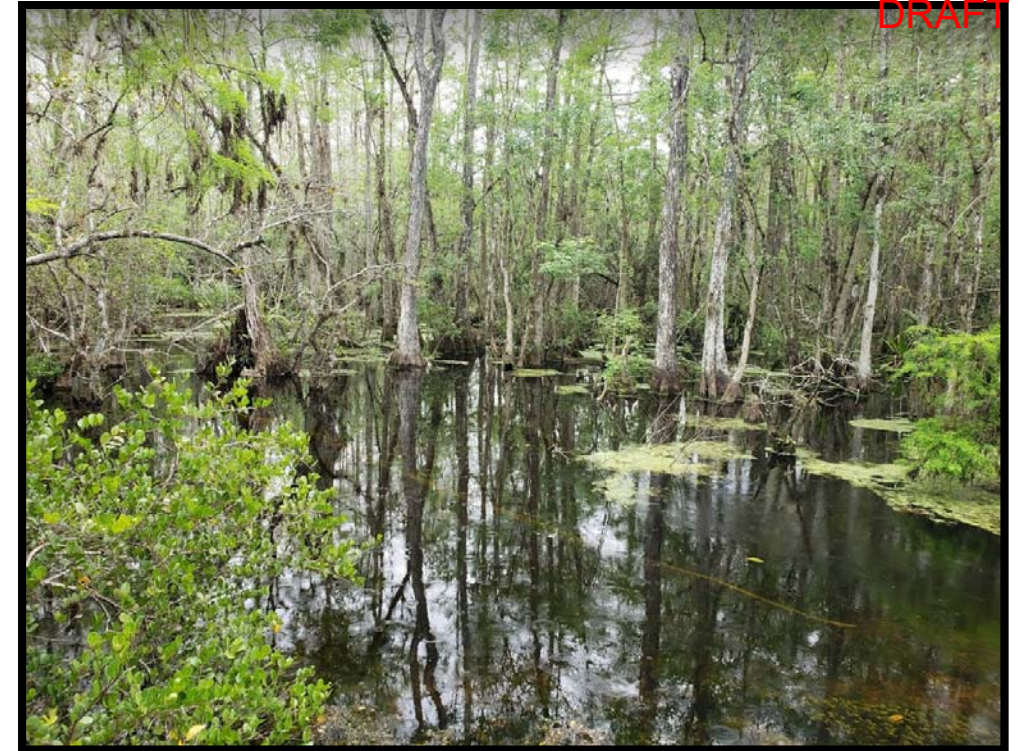
I. WERP Overview

- Background
- Project area
- Objectives

II. Alternative Hr Project Features

III. How the WERP Alternative Hr relates to WCA-3A?

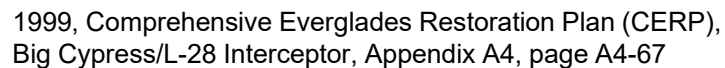
- Project Features that could impact water levels along WCA-3A



US Army Corps
of Engineers

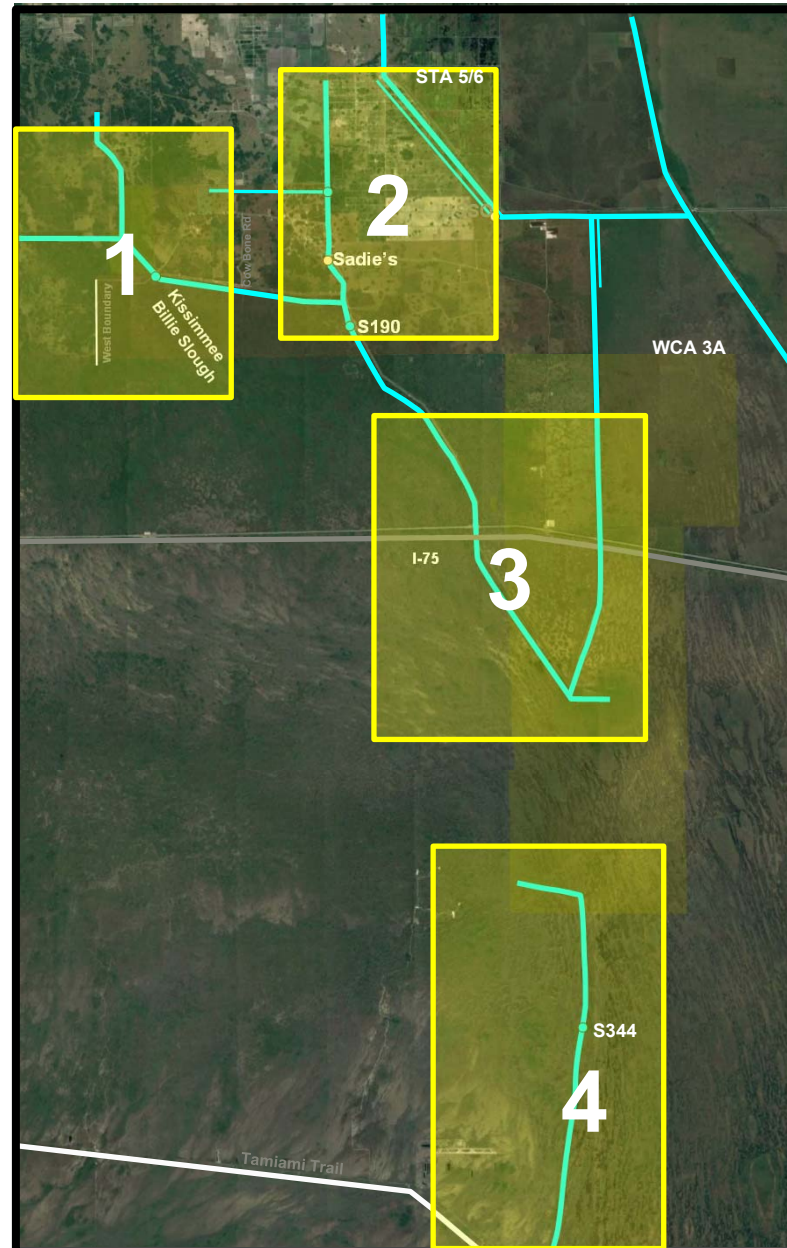


ALTERNATIVE H₁: RESTORE RAIN-DRIVEN SYSTEM WITH EXISTING WATER / PASSIVE MANAGEMENT



Study Objectives:

-
- LEGEND**
- Seminole Tribe of Florida Reservation
 - Miccosukee Tribe of Indians of Florida Reservations
- Measures***
- Water Treatment
 - Weir
 - Adjustable Control Structure
 - Pump
 - Culvert
 - Plug
 - Treated Water
 - Backfill
 - Backfill/Degrade Levee
 - Vegetation Restoration
 - Existing Culverts
 - Existing Structures
 - Embankment
 - Retained Levee
- *Features are not to scale and do not represent final placement
- *The need for additional culverts along 11-mile Rd, US-41, Loop Rd, and the Jetport will be evaluated following final modeling
- LAKE OKEECHOBEE**
- DRAFT**
- REGION 1
- REGION 2
- REGION 3
- REGION 4
- Deer Fence Canal
- C139 Basin
- Big Cypress National Preserve
- 11-mile Road
- US 41
- Loop Road
- Jetport
- WCA-3
- WCA-1
- WCA-2
- WCA-4
- WCA-5
- WCA-6
- WCA-7
- WCA-8
- WCA-9
- WCA-10
- WCA-11
- WCA-12
- WCA-13
- WCA-14
- WCA-15
- WCA-16
- WCA-17
- WCA-18
- WCA-19
- WCA-20
- WCA-21
- WCA-22
- WCA-23
- WCA-24
- WCA-25
- WCA-26
- WCA-27
- WCA-28
- WCA-29
- WCA-30
- WCA-31
- WCA-32
- WCA-33
- WCA-34
- WCA-35
- WCA-36
- WCA-37
- WCA-38
- WCA-39
- WCA-40
- WCA-41
- WCA-42
- WCA-43
- WCA-44
- WCA-45
- WCA-46
- WCA-47
- WCA-48
- WCA-49
- WCA-50
- WCA-51
- WCA-52
- WCA-53
- WCA-54
- WCA-55
- WCA-56
- WCA-57
- WCA-58
- WCA-59
- WCA-60
- WCA-61
- WCA-62
- WCA-63
- WCA-64
- WCA-65
- WCA-66
- WCA-67
- WCA-68
- WCA-69
- WCA-70
- WCA-71
- WCA-72
- WCA-73
- WCA-74
- WCA-75
- WCA-76
- WCA-77
- WCA-78
- WCA-79
- WCA-80
- WCA-81
- WCA-82
- WCA-83
- WCA-84
- WCA-85
- WCA-86
- WCA-87
- WCA-88
- WCA-89
- WCA-90
- WCA-91
- WCA-92
- WCA-93
- WCA-94
- WCA-95
- WCA-96
- WCA-97
- WCA-98
- WCA-99
- WCA-100
- WCA-101
- WCA-102
- WCA-103
- WCA-104
- WCA-105
- WCA-106
- WCA-107
- WCA-108
- WCA-109
- WCA-110
- WCA-111
- WCA-112
- WCA-113
- WCA-114
- WCA-115
- WCA-116
- WCA-117
- WCA-118
- WCA-119
- WCA-120
- WCA-121
- WCA-122
- WCA-123
- WCA-124
- WCA-125
- WCA-126
- WCA-127
- WCA-128
- WCA-129
- WCA-130
- WCA-131
- WCA-132
- WCA-133
- WCA-134
- WCA-135
- WCA-136
- WCA-137
- WCA-138
- WCA-139
- WCA-140
- WCA-141
- WCA-142
- WCA-143
- WCA-144
- WCA-145
- WCA-146
- WCA-147
- WCA-148
- WCA-149
- WCA-150
- WCA-151
- WCA-152
- WCA-153
- WCA-154
- WCA-155
- WCA-156
- WCA-157
- WCA-158
- WCA-159
- WCA-160
- WCA-161
- WCA-162
- WCA-163
- WCA-164
- WCA-165
- WCA-166
- WCA-167
- WCA-168
- WCA-169
- WCA-170
- WCA-171
- WCA-172
- WCA-173
- WCA-174
- WCA-175
- WCA-176
- WCA-177
- WCA-178
- WCA-179
- WCA-180
- WCA-181
- WCA-182
- WCA-183
- WCA-184
- WCA-185
- WCA-186
- WCA-187
- WCA-188
- WCA-189
- WCA-190
- WCA-191
- WCA-192
- WCA-193
- WCA-194
- WCA-195
- WCA-196
- WCA-197
- WCA-198
- WCA-199
- WCA-200
- WCA-201
- WCA-202
- WCA-203
- WCA-204
- WCA-205
- WCA-206
- WCA-207
- WCA-208
- WCA-209
- WCA-210
- WCA-211
- WCA-212
- WCA-213
- WCA-214
- WCA-215
- WCA-216
- WCA-217
- WCA-218
- WCA-219
- WCA-220
- WCA-221
- WCA-222
- WCA-223
- WCA-224
- WCA-225
- WCA-226
- WCA-227
- WCA-228
- WCA-229
- WCA-230
- WCA-231
- WCA-232
- WCA-233
- WCA-234
- WCA-235
- WCA-236
- WCA-237
- WCA-238
- WCA-239
- WCA-240
- WCA-241
- WCA-242
- WCA-243
- WCA-244
- WCA-245
- WCA-246
- WCA-247
- WCA-248
- WCA-249
- WCA-250
- WCA-251
- WCA-252
- WCA-253
- WCA-254
- WCA-255
- WCA-256
- WCA-257
- WCA-258
- WCA-259
- WCA-260
- WCA-261
- WCA-262
- WCA-263
- WCA-264
- WCA-265
- WCA-266
- WCA-267
- WCA-268
- WCA-269
- WCA-270
- WCA-271
- WCA-272
- WCA-273
- WCA-274
- WCA-275
- WCA-276
- WCA-277
- WCA-278
- WCA-279
- WCA-280
- WCA-281
- WCA-282
- WCA-283
- WCA-284
- WCA-285
- WCA-286
- WCA-287
- WCA-288
- WCA-289
- WCA-290
- WCA-291
- WCA-292
- WCA-293
- WCA-294
- WCA-295
- WCA-296
- WCA-297
- WCA-298
- WCA-299
- WCA-300
- WCA-301
- WCA-302
- WCA-303
- WCA-304
- WCA-305
- WCA-306
- WCA-307
- WCA-308
- WCA-309
- WCA-310
- WCA-311



WERP FOCUS AREAS:

1. WESTERN AREA
2. EASTERN AREA
3. CENTRAL AREA
4. SOUTHERN AREA



US Army Corps
of Engineers

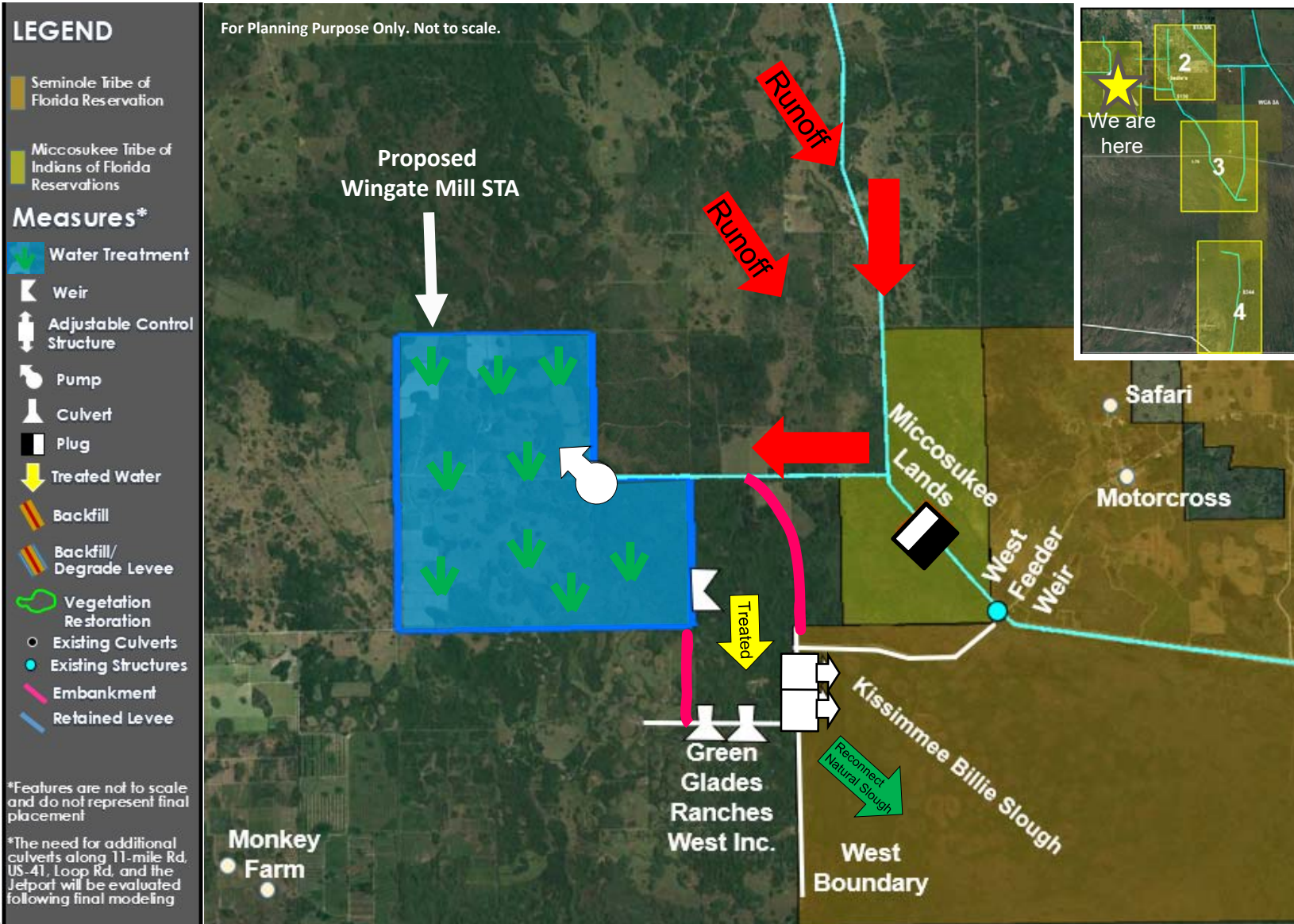


ALTERNATIVE HR - WESTERN AREA (1)

New Features Proposed by WERP

DRAFT

5



- 4,050-acre acre of Storm Treatment Area (STA)
- Inflow pump station
- Inflow distribution canal
- Outflow collection canal
- Embankment to keep water in slough
- Culverts along existing roads
- Plug or gated structure on Wingate Mill Canal



**US Army Corps
of Engineers®**

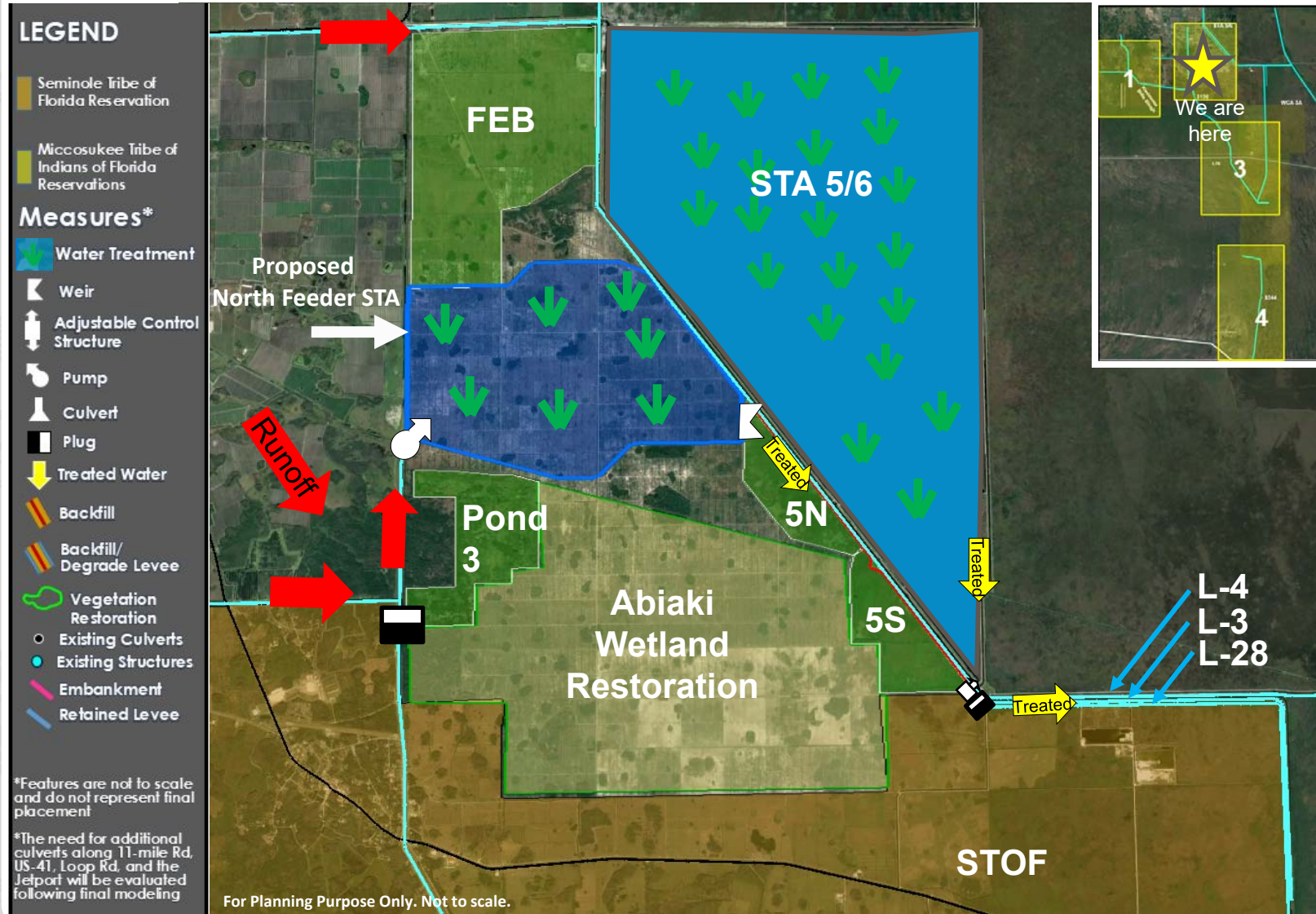


ALTERNATIVE HR - Eastern Area (2)

New Features Proposed by WERP

DRAFT

6



- 3,420 acre of Storm Treatment Area (STA)
- Intake canal
- Inflow pump station
- Inflow distribution canal
- Outflow collection canal
- Gated culvert outlet
- 2 Plugs



US Army Corps of Engineers

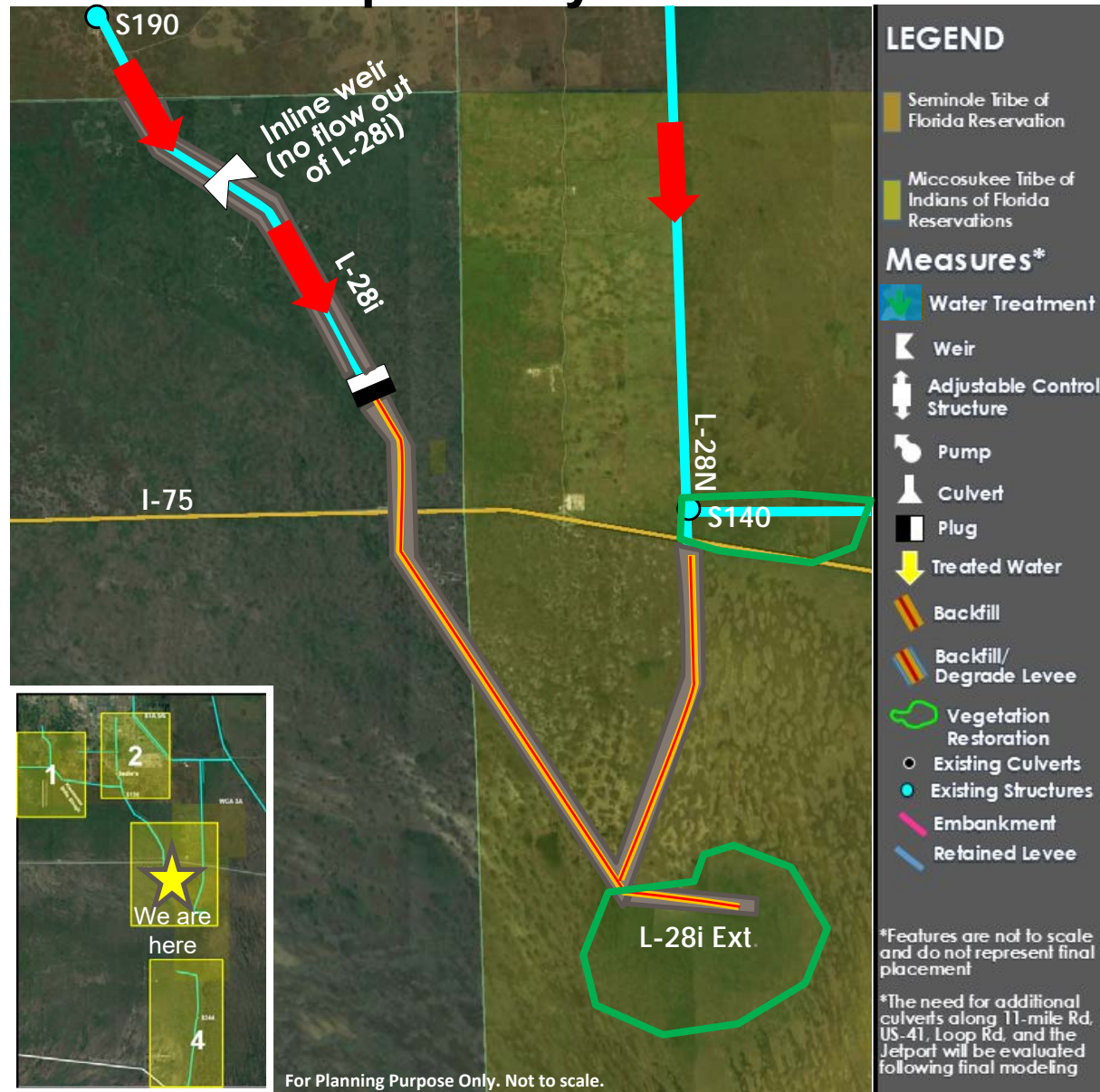


ALTERNATIVE HR – Central Area (3)

New Features Proposed by WERP

DRAFT

7



- Inline Weir on L-28i, to prevent water level drawdowns on Big Cypress Reservation
- Plug and backfill of L-28i extending approximately 1.5 miles north of I-75 (no flow out of L-28i)
- Levee degrade and backfill of L-28i, L-28i ext., and L-28N south of I-75 (“Triangle”)
- Tree Island Restoration along L-28i
- Vegetation restoration near L-28 ext. and S-140.



US Army Corps of Engineers

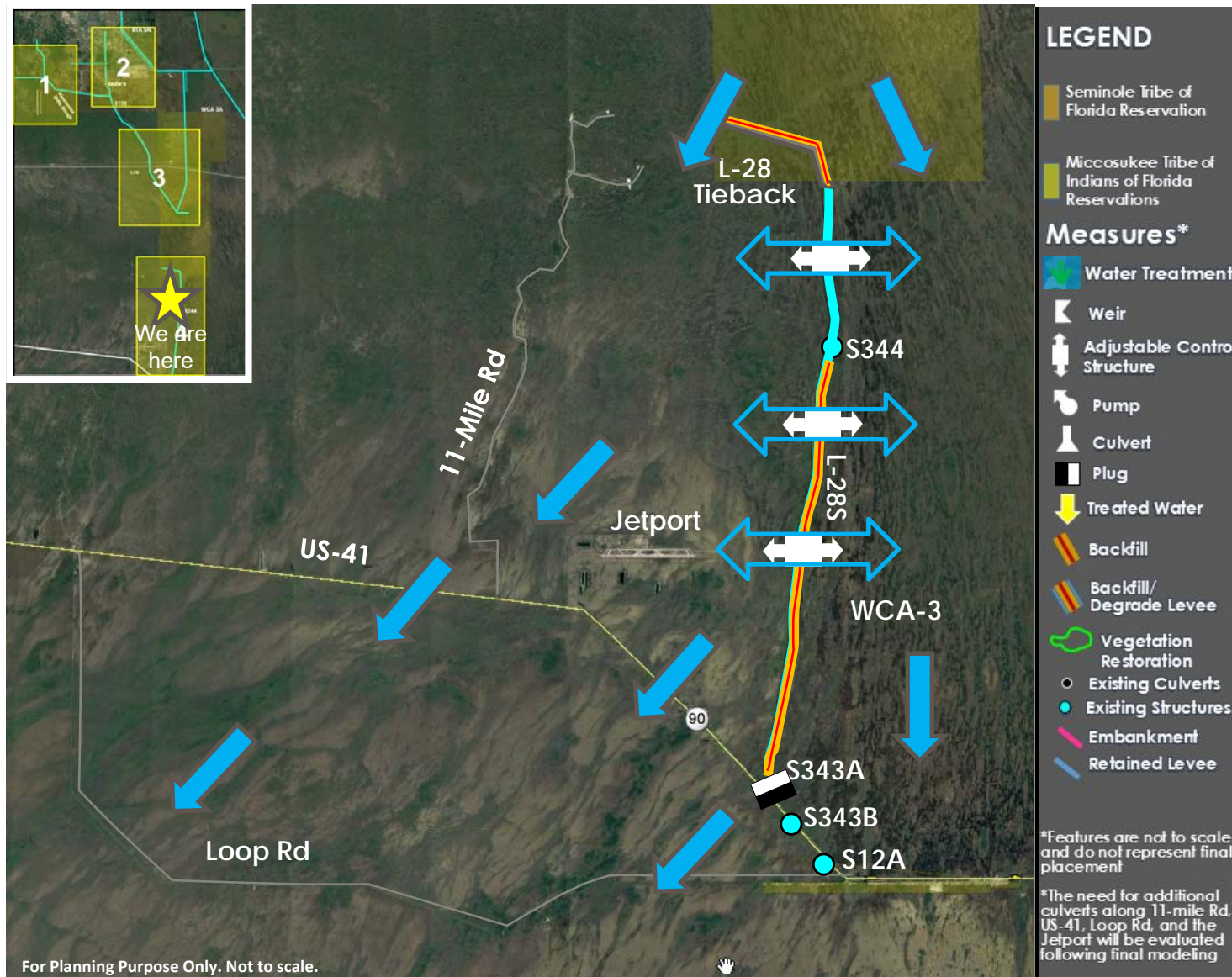


ALTERNATIVE HR – Southern Area (4)

New Features Proposed by WERP

DRAFT

8



- Degrade of L-28 Tieback levee and canal backfill
- Backfill of approximately 9 miles of L-28S canal south of S344
- 3 gated control structures to allow flow from east to west
- Need for additional culverts on US-41, Loop Rd, 11 mile Rd, and Jetport will be evaluated following modeling
- Evaluate need for plug on US-41 canal



US Army Corps
of Engineers



HOW THE WERP ALTERNATIVE Hr RELATES TO WCA-3A?

- Three out of four areas in WERP will have an effect on WCA-3A. These areas are:
 - ☐ Eastern
 - ☐ Central
 - ☐ Southern
- WERP ALTHR is currently evaluating the system wide response to the environmental, water supply, flood protection, real estate and economic effects within the project area and surrounding areas.



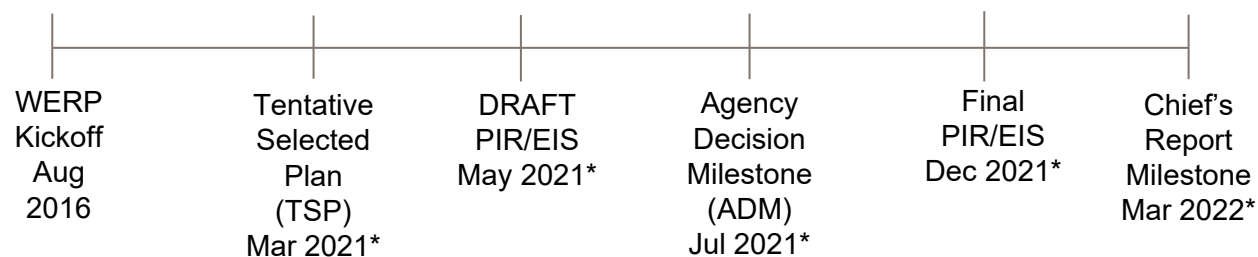
US Army Corps
of Engineers



QUESTIONS?



Projected Project Timeline



* Pending 2nd Waiver Approval



US Army Corps
of Engineers

