

SOUTH FLORIDA WATER MANAGEMENT DISTRICT

# WELCOME! DBHYDRO



## Overview of DBHYDRO Web Map March 16, 2020

Sharon M. Peterkin, B. Sc.  
Staff Environmental Scientist



[sfwmd.gov](http://sfwmd.gov)

## DBHYDRO System Overview

### Web

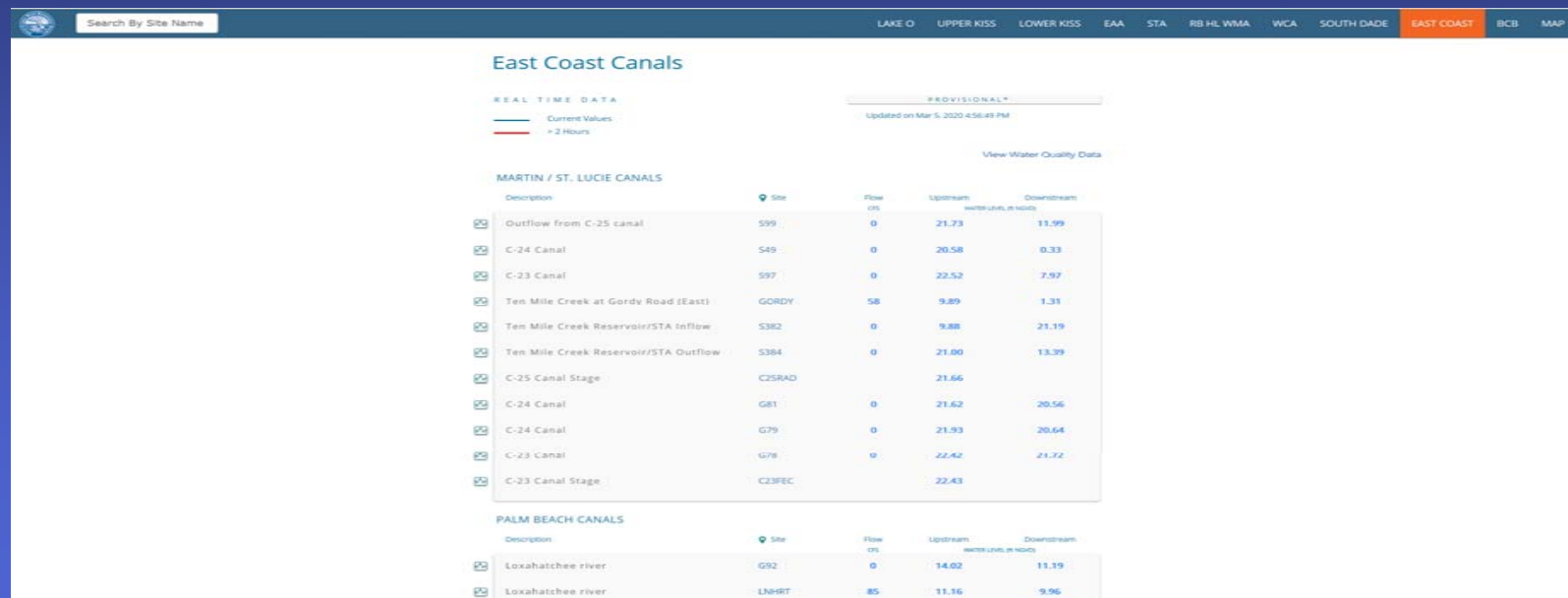
- URL: [www.sfwmd.gov/dbhydro](http://www.sfwmd.gov/dbhydro)
- <http://my.sfwmd.gov/WAB/EnvironmentalMonitoring/index.html#>
- DBHYDRO Technical Support (561) 686-8800 Ext. 4594
- DBHYDRO User's Guide & FAQ

## Types of Data Available

- Hydrologic and Physical Data
- Water Quality Data
- Hydrogeologic Data
  - Groundwater
  - Lithologic
  - Geophysical
- **Real Time Data**

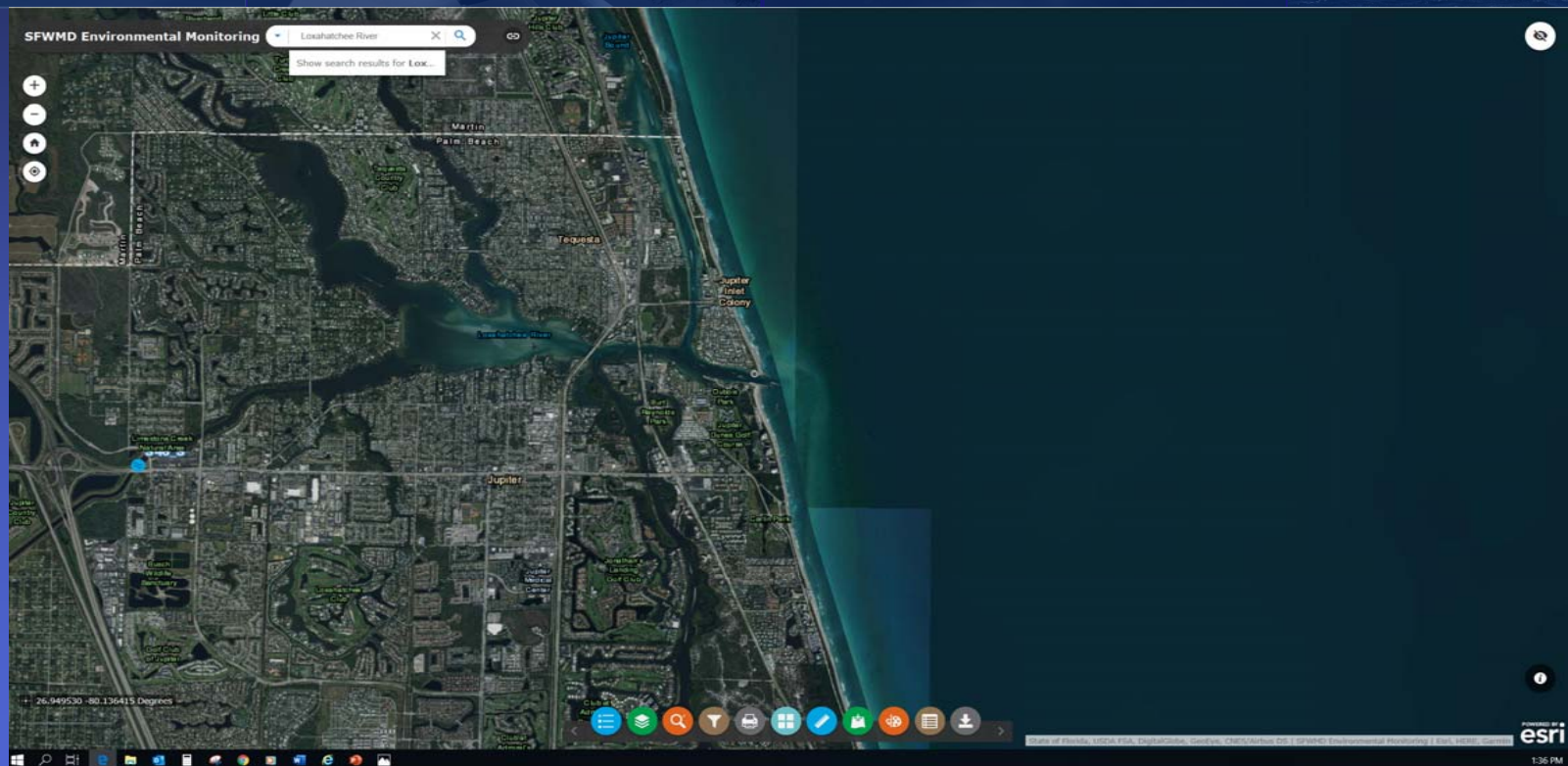
# Real Time Data

- Real Time Data from SFWMD Website
- Check Current Status of Flows and Water Levels





# Loxahatchee River Image



SOUTH FLORIDA WATER MANAGEMENT DISTRICT

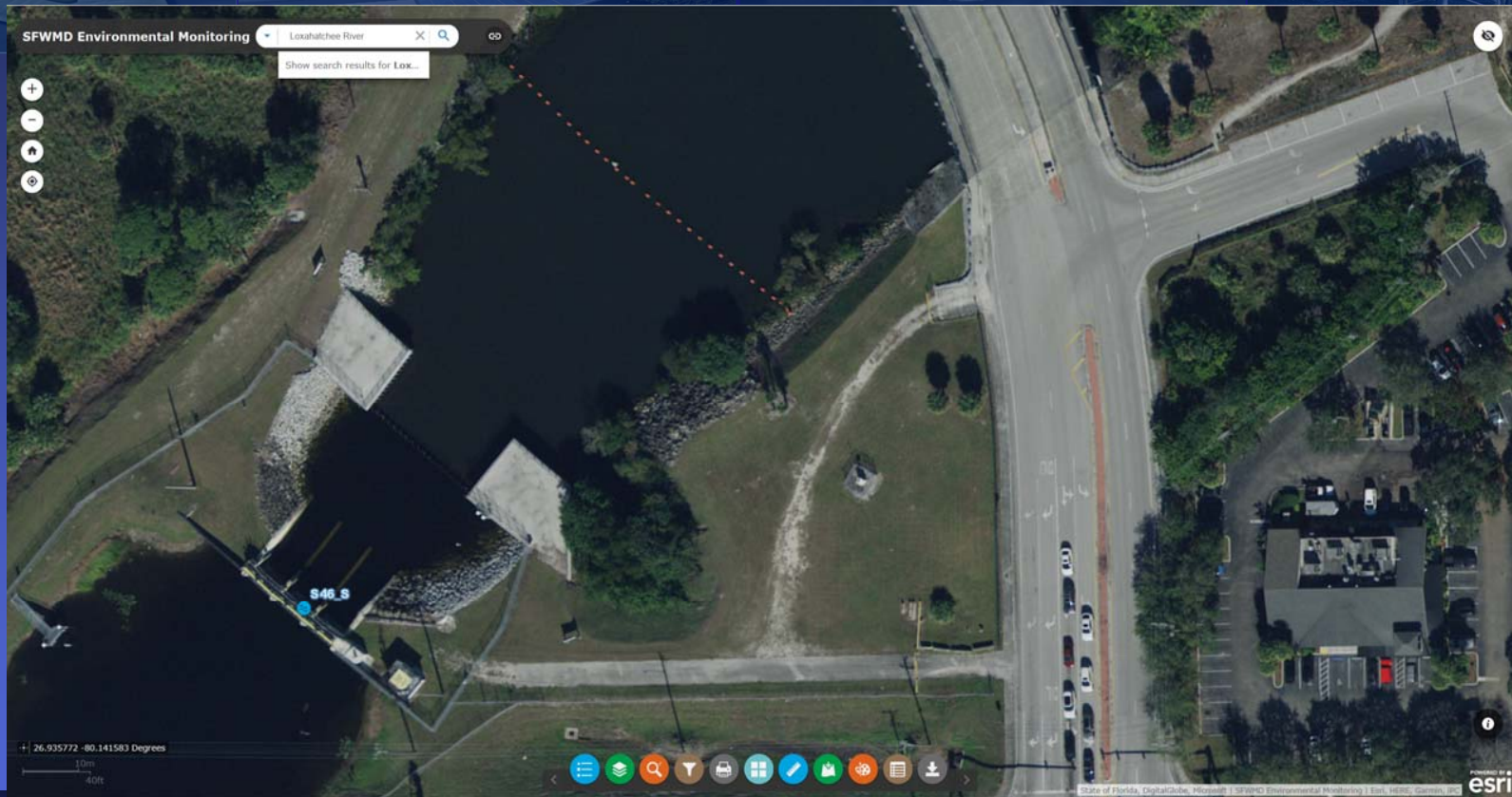
**Gate Opening/Visible Flow =  
Good Fishing!!!**



[sfwmd.gov](http://sfwmd.gov)



# Where is the snook???



SOUTH FLORIDA WATER MANAGEMENT DISTRICT

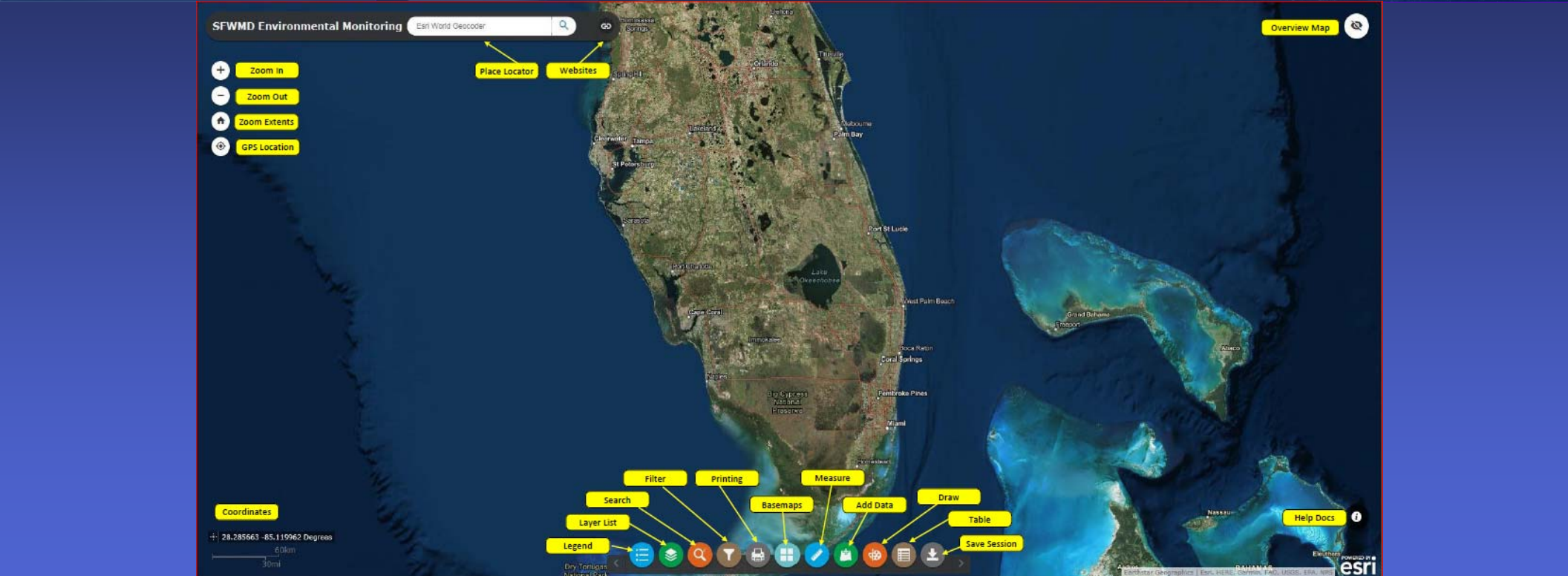
# SFWMD Environmental Monitoring Web Map



<https://apps.sfwmd.gov/WAB/EnvironmentalMonitoring/index.html>

**sfwmd.gov**



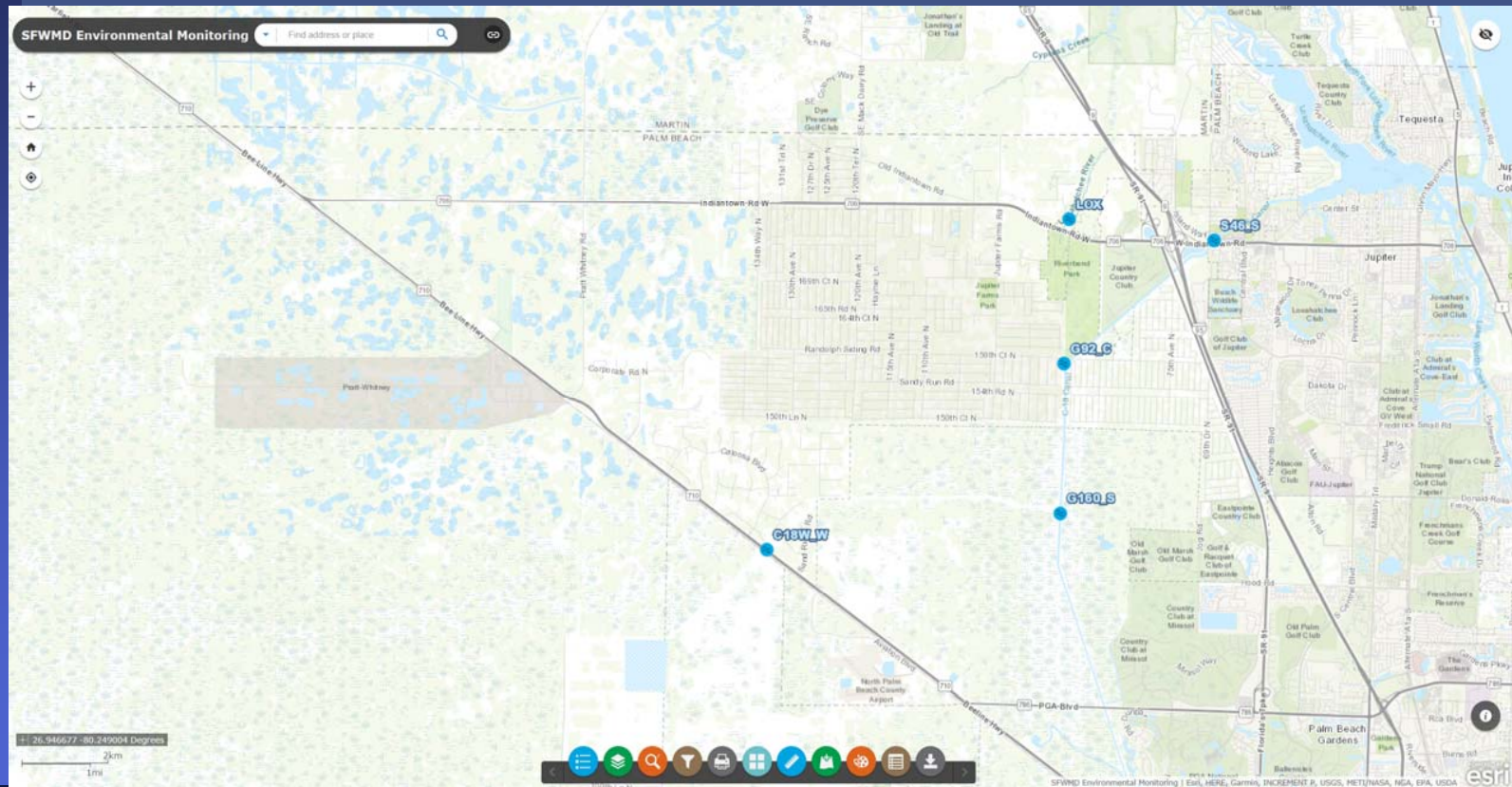


**[sfwmd.gov](http://sfwmd.gov)**



# SOUTH FLORIDA WATER MANAGEMENT DISTRICT

## S46 - SW FORK LOXAHATCHEE RIVER NORTH OF INDIANTOWN ROAD



[sfwmd.gov](http://sfwmd.gov)



## S46 MONITORING

- 1) S46 Gate Openings (Three Gates)
- 2) S46 Water Levels (Headwater & Tailwater)
- 3) S46 Flow (Structure Type Spillway)
- 4) C18S46 (Surface Water Grab Samples)



SOUTH FLORIDA WATER MANAGEMENT DISTRICT

# Gated Spillway



[sfwmd.gov](http://sfwmd.gov)



Water Quality -  
Grab sample collected from  
platform and analyzed at  
SFWMD

# Acknowledgments

## Special

**Acknowledgments:** Mike Wright, Laboratory Director  
Stuart Van Horn, P.E. Bureau Chief  
Lawrence Glenn, Division Director  
Brian Turcotte, P.E. Enterprise Scientific Data Mgr.



SOUTH FLORIDA WATER MANAGEMENT DISTRICT

**Thank You!**



**sfwmd.gov**

## Contact Information

**Sharon Peterkin  
a.k.a. Data Diva**

**561-686-8800 x4594  
speterk@sfwmd.gov**