



Collier County Impaired Water Bodies

Kevin O'Donnell

Environmental Administrator

Division of Environmental Assessment & Restoration

Watershed Assessment Section

Kevin.ODonnell@floridadep.gov

850.245.8469

February 2020

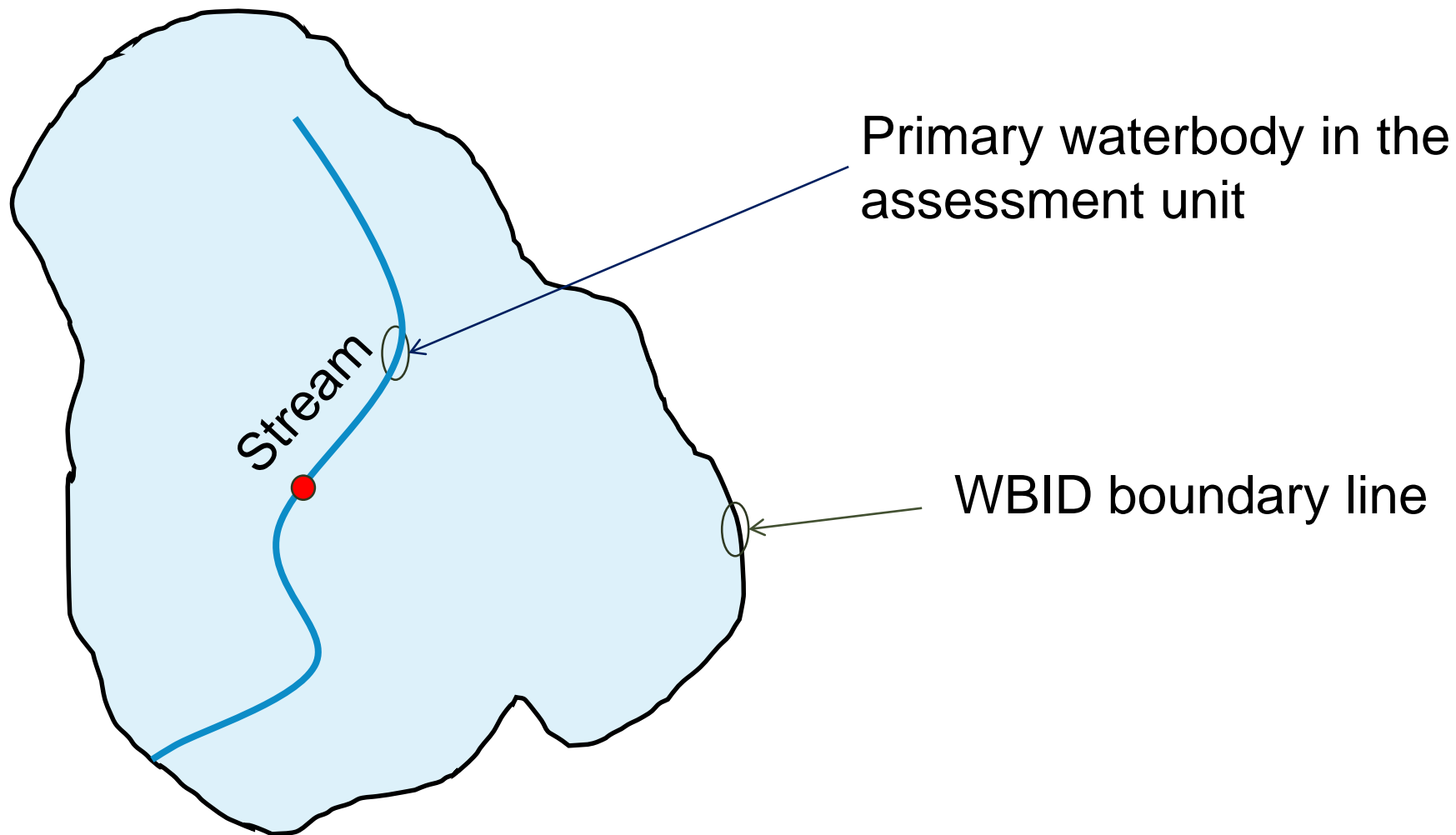




Waterbody Identification Number - WBID

Within each basin we have delineated watersheds or waterbody assessment units. These are known as WBIDs. Each WBID has a name and an ID

WBIDs are important to group and track water quality in a watershed





Watershed Management Approach

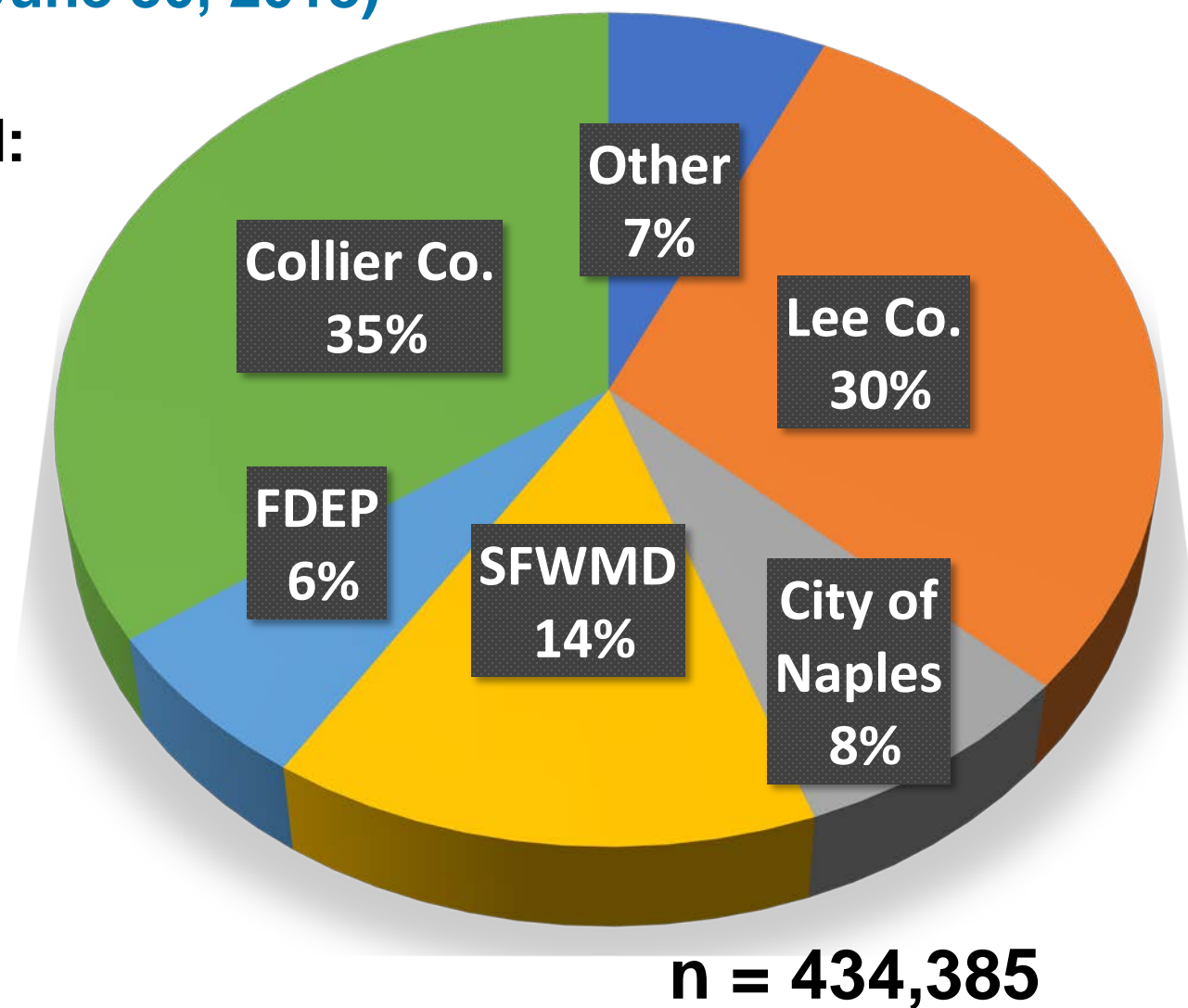
- **Standards are designed to protect designated uses for each WBID:**
 - Class I (Potable Water Supplies)
 - Class II (Shellfish Propagation or Harvesting)
 - Class III (Fish Consumption; Recreation, Propagation and Maintenance of a Healthy, Well-Balanced Population of Fish and Wildlife)
- **Florida submits lists of “Impaired” waterbodies every two years that do not meet water quality standards**
- **Impaired waterbodies are scheduled for the development of a Total Maximum Daily Load (TMDL) which will restore water quality over time**
- **Once the TMDL is adopted a Basin Management Action Plan (BMAP) brings stakeholders together to implement the requirements of the TMDL**



Everglades West Coast Data Providers % for the Verified Period (Jan. 1, 2012 – June 30, 2018)

Parameters frequently assessed:

Bacteria
Turbidity
Metals (Iron and Copper)
Dissolved Oxygen
Chlorophyll
Nitrogen
Phosphorus





Watershed Integrated Network (WIN) Contacts

District	Coordinator	Phone	E-mail
WIN Administrator	Julie Zimmerman	850-245-8508	Julie.Zimmerman@dep.state.fl.us
Central, South, & Southwest (that do not use the DMT)	Tommy Adams	850-245-8467	Thomas.l.adams@dep.state.fl.us
Northeast, Northwest, & Southeast	Justin Nelson	850-245-8510	Justin.m.nelson@dep.state.fl.us
Statewide Orgs (that use DMT)	Bashia Marks	850-245-8049	Bashia.Marks@dep.state.fl.us
WQX and SPA Coordinator	Lisa Schwenning	850-245-8509	Lisa.Schwenning@dep.state.fl.us



Collier County - Overview

Summary:

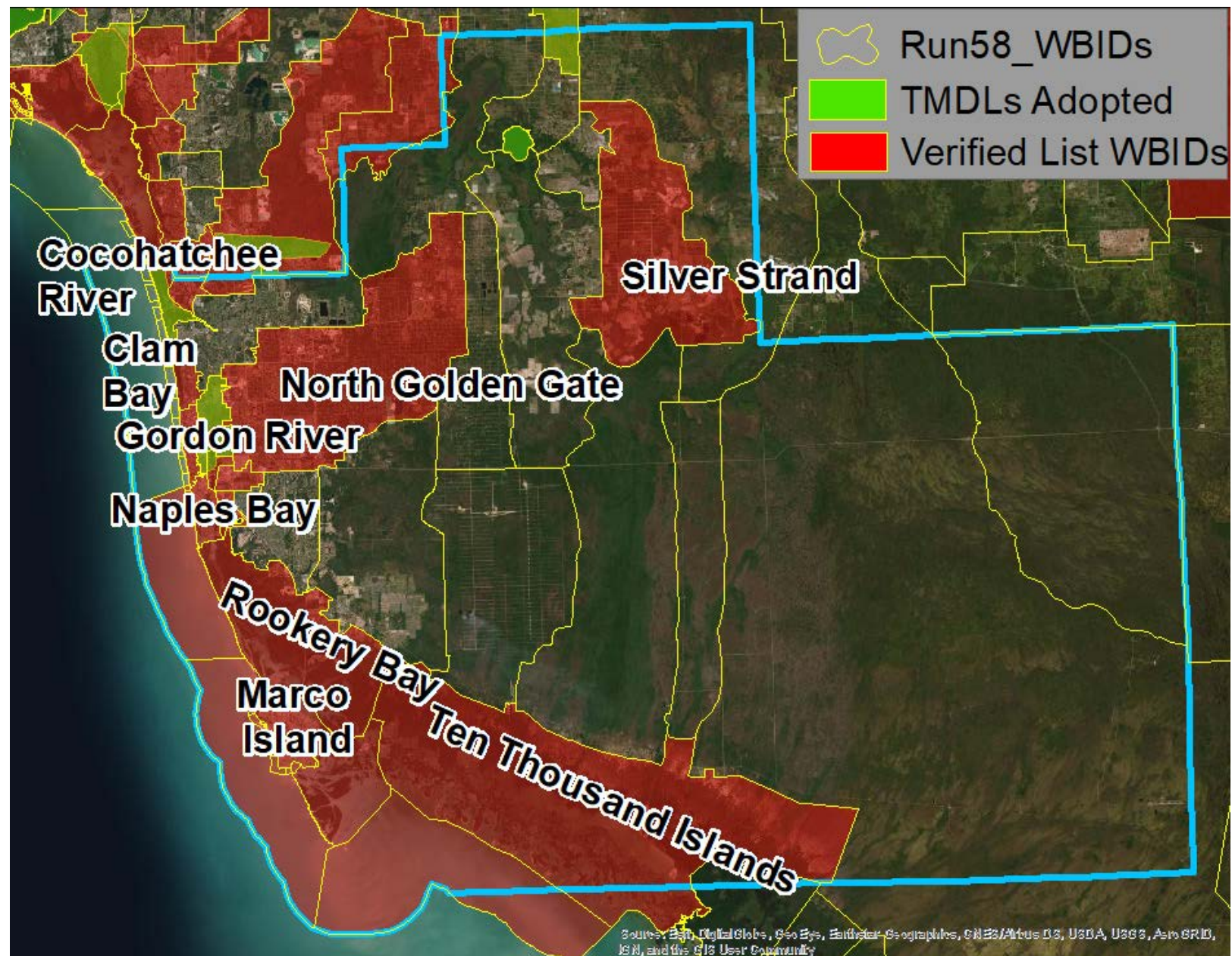
3 TMDLs:

Lake Trafford –Nutrients
Gordon River-Dissolved Oxygen
Cocohatchee River - Fecal Coliform

Summary:

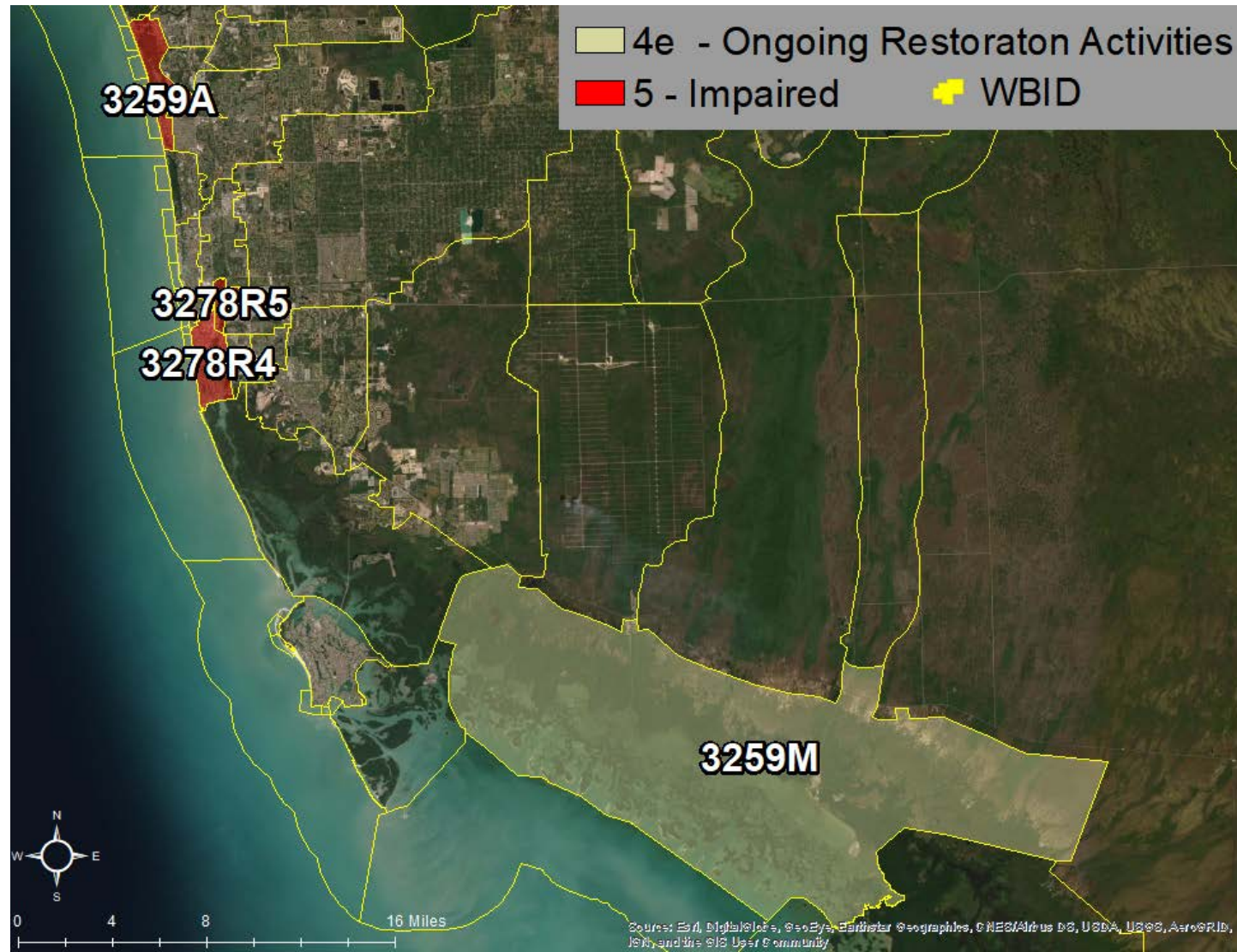
36 Verified Listings:

10 Metals
2 Dissolved Oxygen
12 Bacteria
12 Nutrients





Collier County – Chlorophyll-a

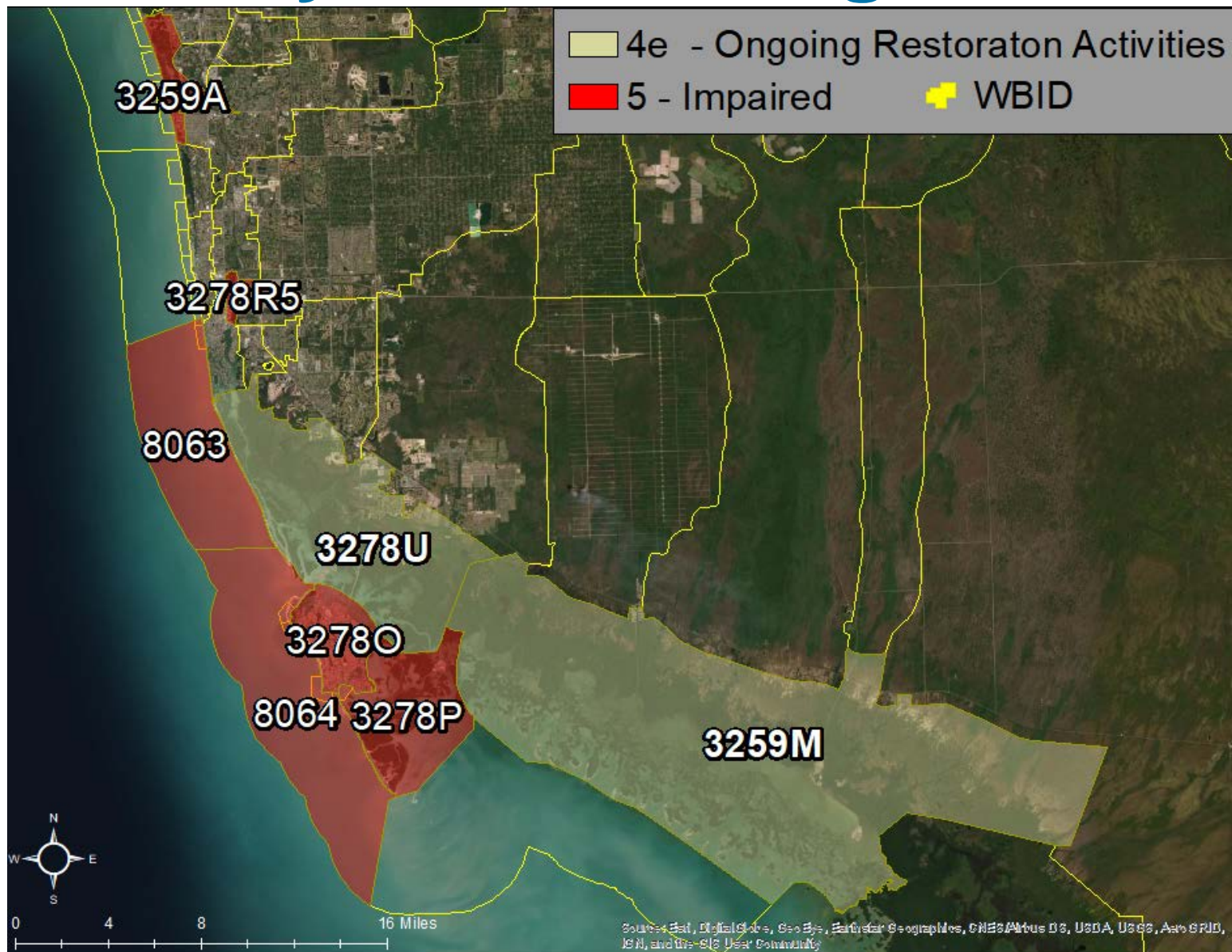


WBID	Waterbody Name
3259A	Cocohatchee River
3259M	Ten Thousand Islands
3278R4	Naples Bay (Coastal)
3278R5	Gordon River (Marine)



Collier County - Total Nitrogen

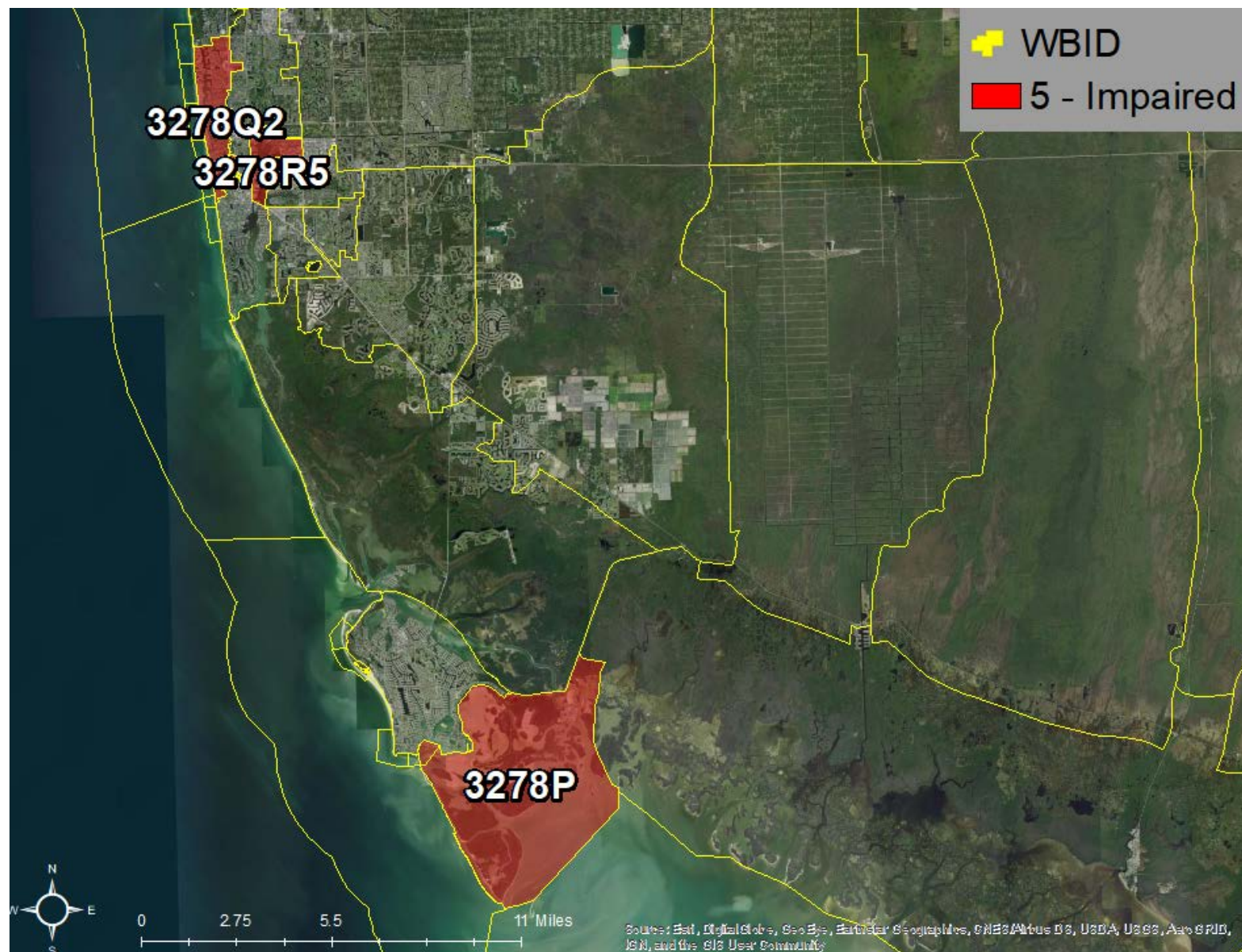
WBID	Waterbody Name
3259A	Cocohatchee River
3259M	Ten Thousand Islands
3278O	Marco Island
3278P	Marco Island (South)
3278R5	Gordon River (Marine)
3278U	Rookery Bay (Coastal)
8063	Gulf of Mexico (Rookery Bay-Naples)
8064	Gulf of Mexico (Marco Island)





Collier County - Total Phosphorus

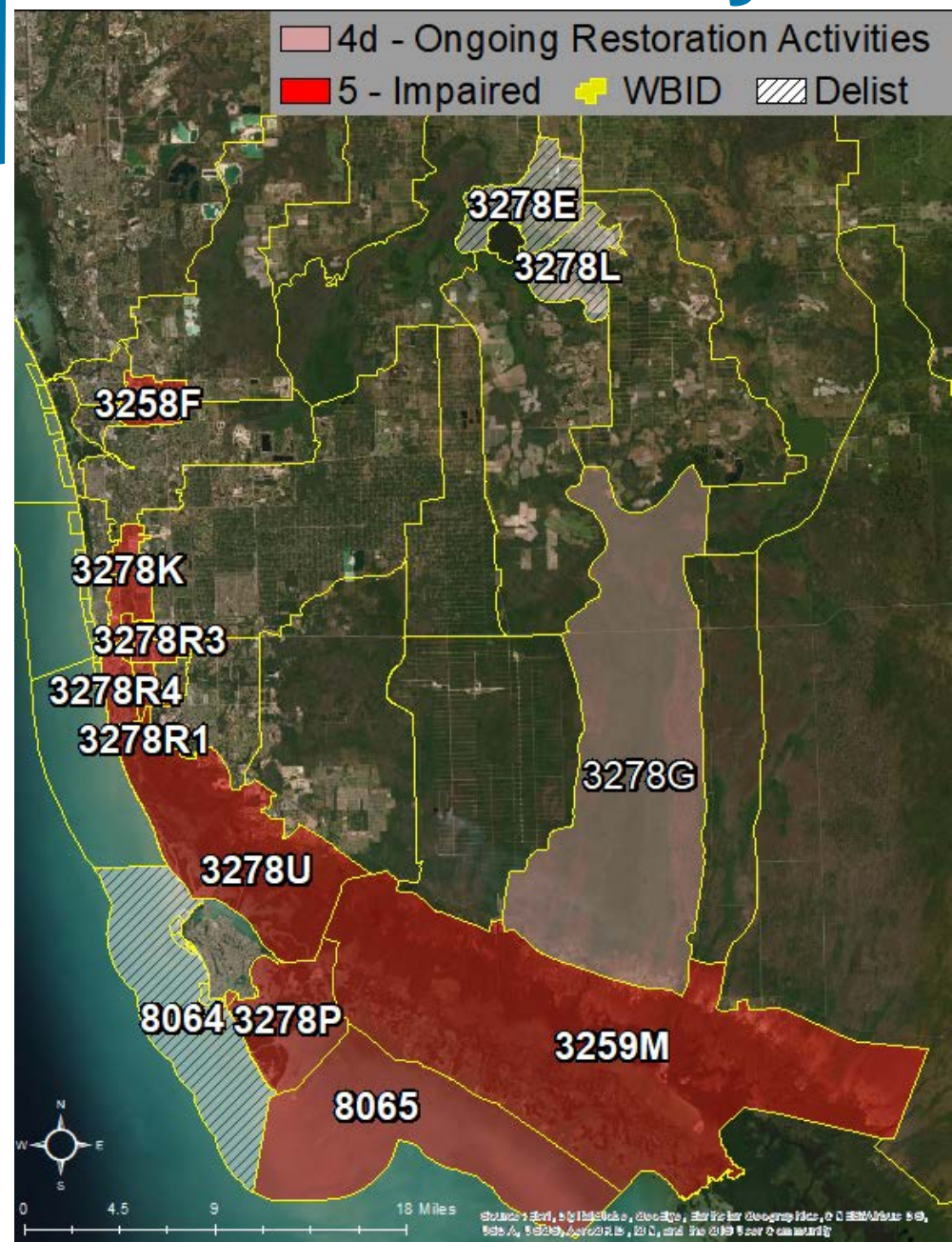
WBID	Waterbody Name
3278P	Marco Island (South)
3278Q2	Moorings Bay System
3278R5	Gordon River (Marine)





Collier County - Bacteria

- **Fresh:**
Escherichia coli
- **Marine:**
Enterococci
- Fecal
Coliform

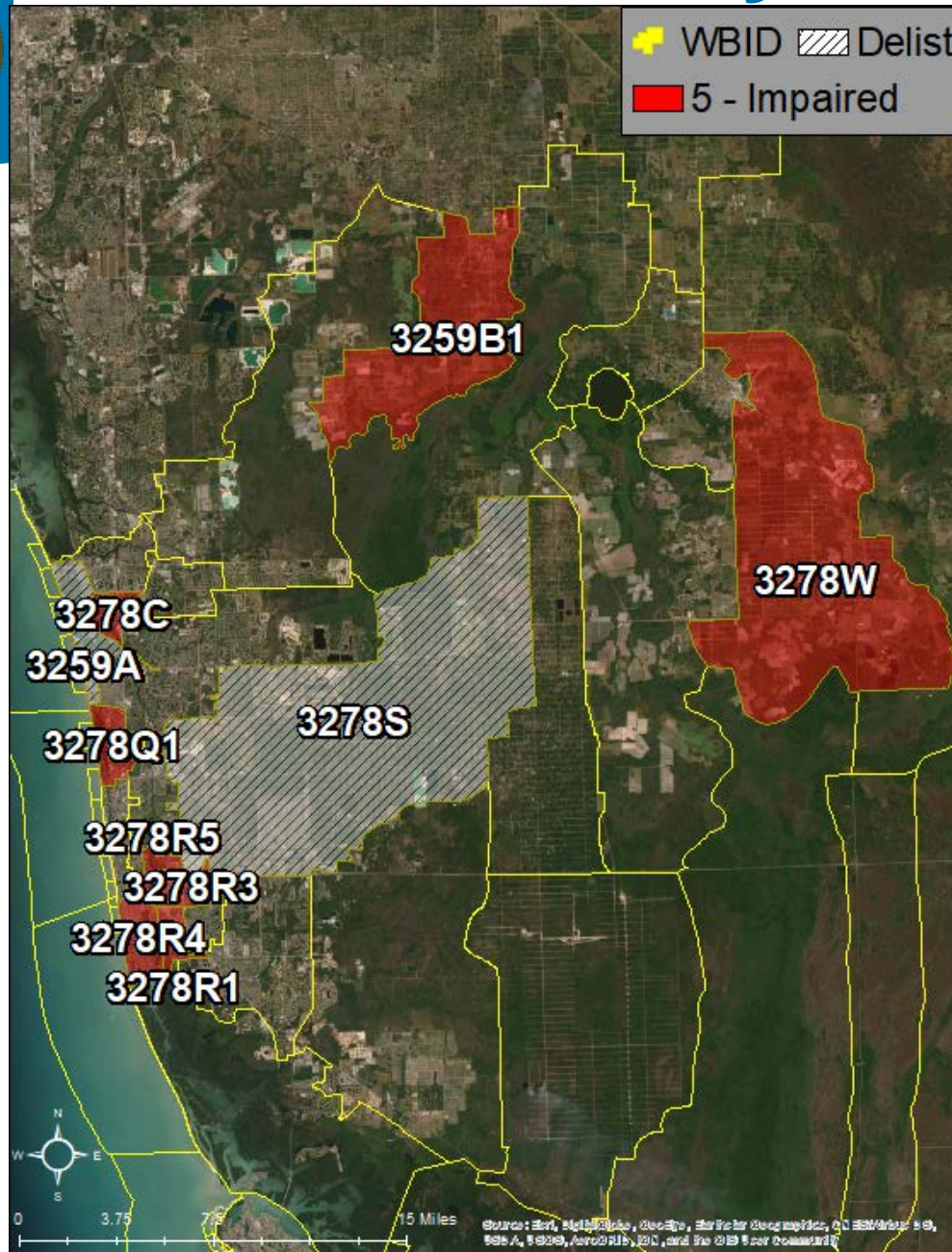


WBID	Waterbody Name
3258F	Oak Creek
3259M	Ten Thousand Islands
3278G	Fakahatchee Strand
3278K	Gordon River Extension
3278P	Marco Island (South)
3278R1	Haldeman Creek (Lower)
3278R3	Rock Creek
3278R4	Naples Bay (Coastal)
3278R5	Gordon River (Marine)
3278U	Rookery Bay (Coastal)
8065	Gulf of Mexico



Collier County - Metals

- Copper
- Iron



WBID	Waterbody Name
3259B1	Drainage To Corkscrew Swamp
3278C	Wiggins Bay Outlet
3278Q1	Clam Bay
3278R1	Haldeman Creek (Lower)
3278R3	Rock Creek
3278R4	Naples Bay (Coastal)
3278R5	Gordon River (Marine)
3278W	Silver Strand



How can the public get involved?

<https://floridadep.gov/dear/dear/content/subscribe#IWR>

<https://floridadep.gov/dear/dear/content/subscribe>

Florida Department of Environmental Protection

A-Z Index Forms News Events Contact

About DEP How Do I ▾ Divisions ▾ Air Lands Parks & Rec

SEARCH...

Subscribe

[Home](#) » [Divisions](#) » [Division of Environmental Assessment and Restoration](#) » [Division of Environmental Assessment and Restoration \(General\)](#) » [Subscribe](#)

Division of Environmental Assessment and Restoration Quick Links

- [Water Quality Assessment Program](#)
- [Water Quality Standards Program](#)

Basin Management Action Plan Notifications

Thank you for your interest in the Florida Department of Environmental Protection's Basin Management Action Plan (BMAP) process. If you would like to receive notifications on upcoming public meetings and the department's activities related to the development and implementation of BMAPs, please enter your email address in our [subscriber page](#) and you will be taken to the subscription page. You can update your subscription preferences at any time. Below is a brief description of each distribution list.

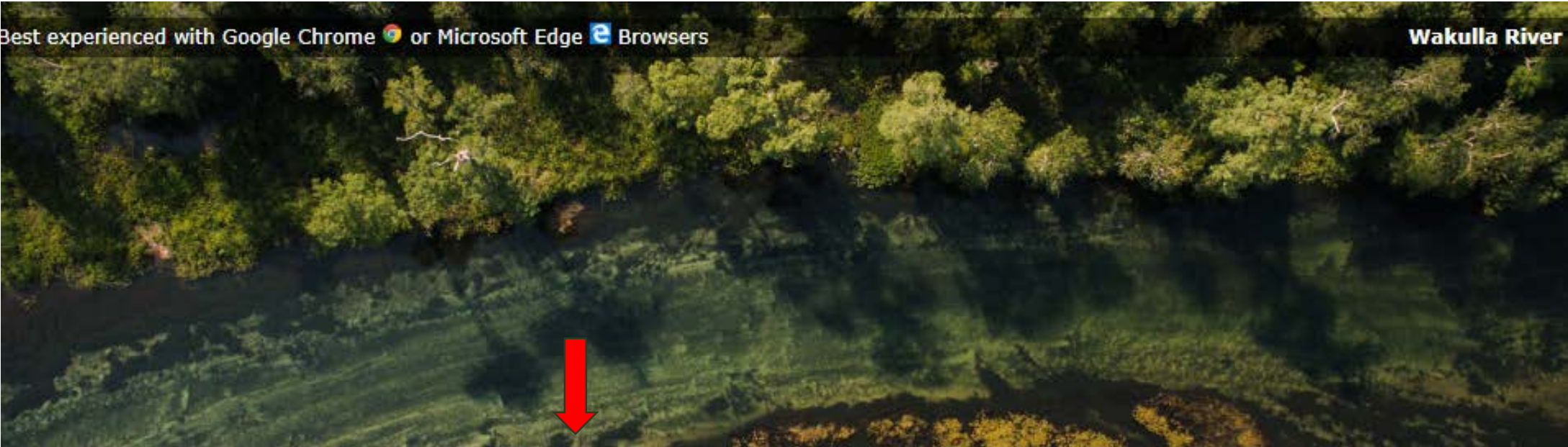


Interactive Maps Homepage


<https://fdep.maps.arcgis.com/home/index.html>

Best experienced with Google Chrome or Microsoft Edge Browsers


Wakulla River




A large red arrow points from the center of the aerial image of the Wakulla River down to the first thumbnail.




Our Lands. Our Legacy. A Resilient Florida.



Water Quality Assessments, TMDLs, and BMAPs



Islands Inventory and Assessment Project

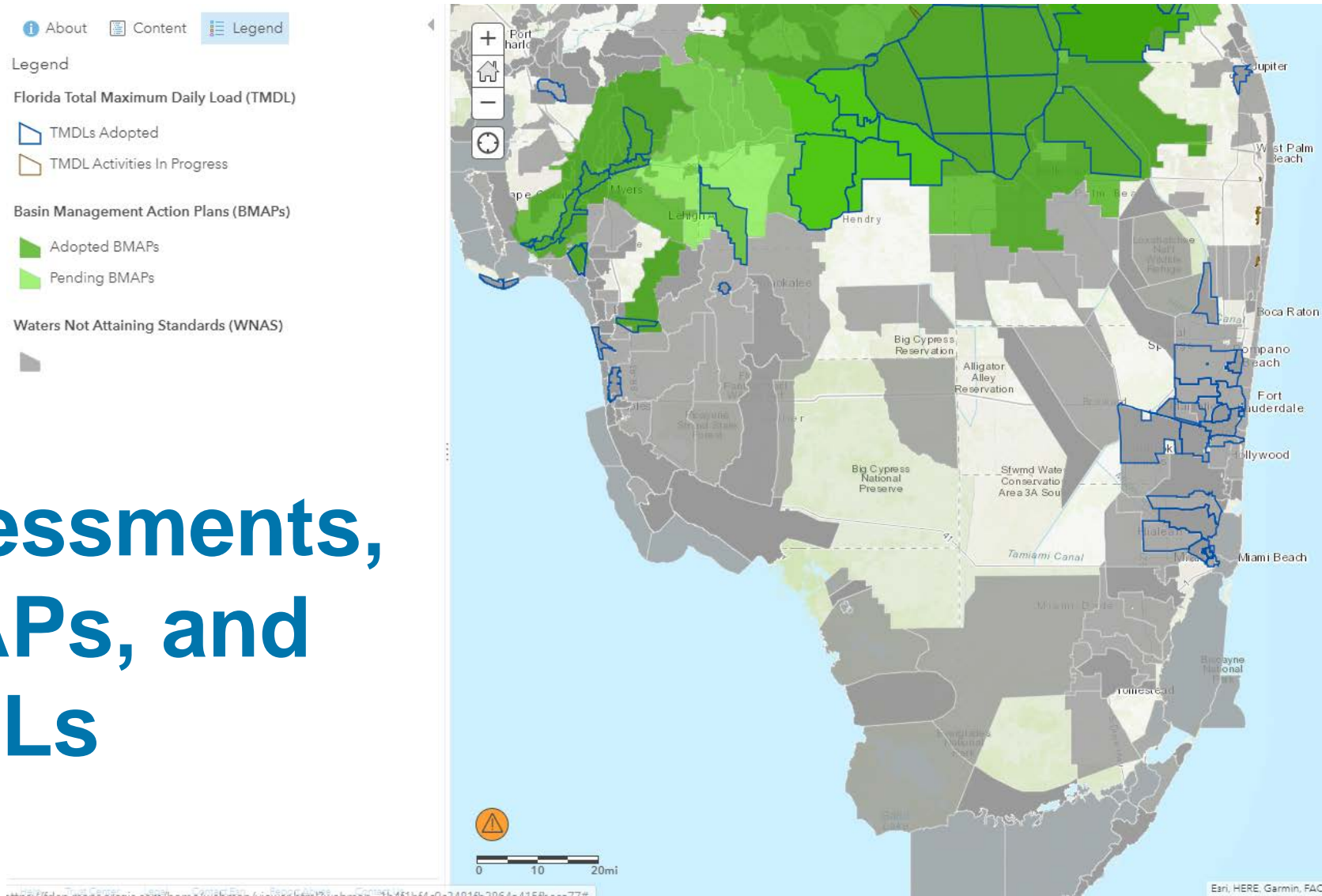


Southeast Florida Coral Reef Locator



Interactive Maps

<https://fdep.maps.arcgis.com/home/webmap/viewer.html?webmap=1b4f1bf4c9c3481fb2864a415fbeca77>



Assessments, BMAPs, and TMDLs



Division - Contacts

Julie Espy

Division Director

Division of Environmental
Assessment & Restoration

Julie.Espy@FloridaDEP.gov

850.245.7518

Greg DeAngelo

Deputy Director

Division of Environmental
Assessment & Restoration

Gregory.DeAngelo@FloridaDEP.gov

850.245.7609

Kevin O'Donnell

Environmental Administrator

Water Quality Assessment Program

Watershed Assessment Section

Kevin.ODonnell@FloridaDEP.gov

850.245.8469

David Tyler

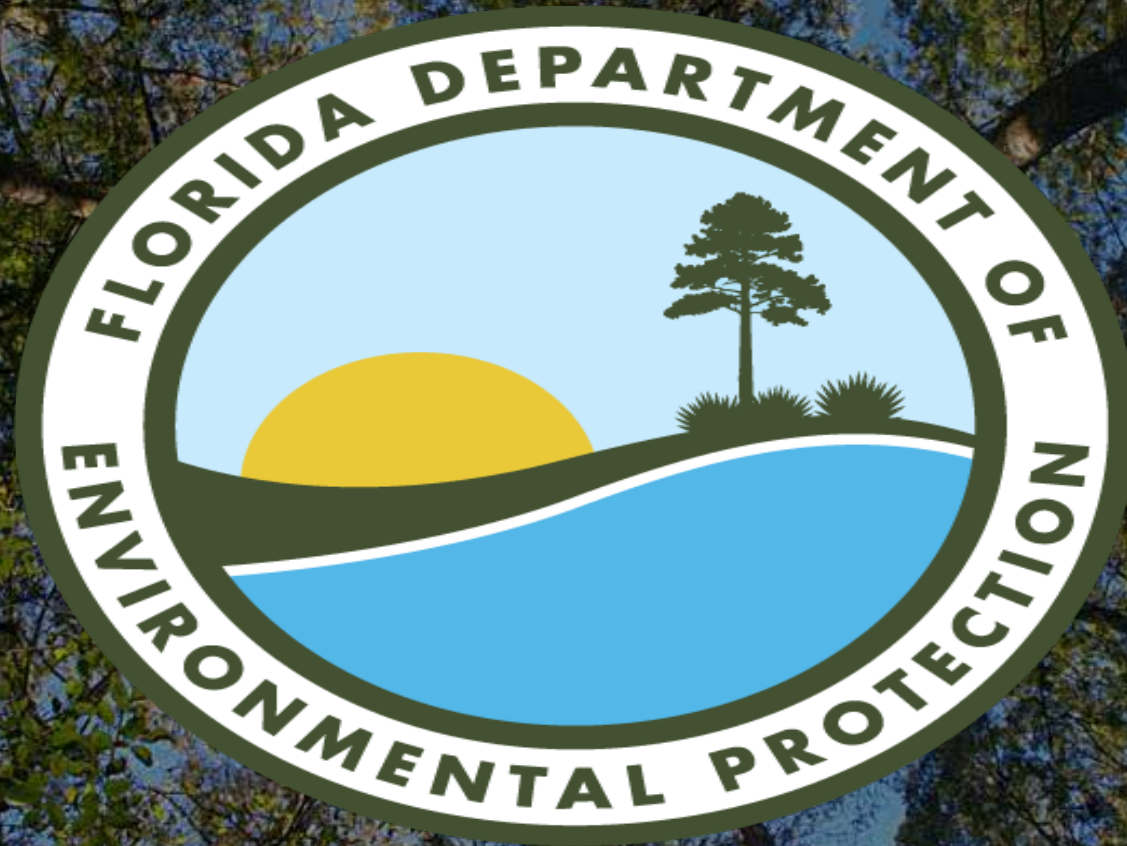
Environmental Manager

Water Quality Assessment Program

Watershed Assessment Section

David.Tyler@dep.state.fl.us

850.245.8458



FDEP Websites:

<https://floridadep.gov/dear/watershed-assessment-section>