



Recreational Facility & Volunteer Project Updates

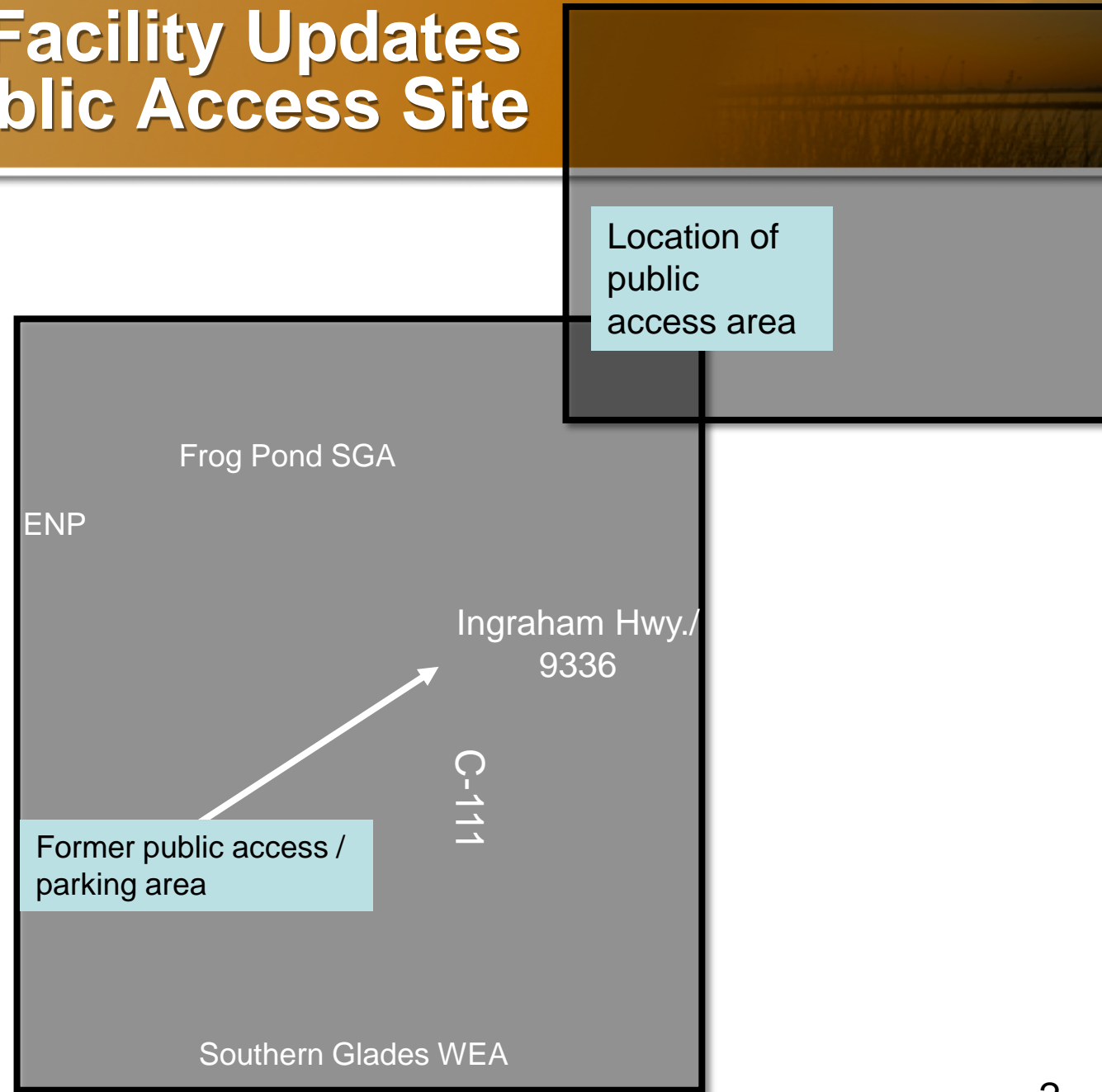
Recreational Forum December 16, 2019

Dan Cotter
SFWMD, Land Stewardship Section



Recreational Facility Updates Frog Pond Public Access Site

- Background:
 - Located in Miami-Dade County adjacent to the C-111.
 - In the past the District provided a public access parking area on the south side of Ingraham Hwy.
 - The parking area was no longer available due to the installation of the S-199 several years ago.





Recreational Facility Updates Frog Pond Public Access Site

- The District is proposing to replace and construct a grass parking area on the north side of Ingraham Hwy.
- The parking area will provide public access to the area and greenway trail, including hiking, biking, horseback riding, and the Frog Pond FWC managed dove hunting area.





Volunteer Program

- SFWMD Volunteer Program
 - Section 373.1391(3), Florida Statutes, encourages each District to use volunteers to provide land management and other services...
 - SFWMD welcomes volunteers to provide services and assistance with its mission.



Volunteer maintenance

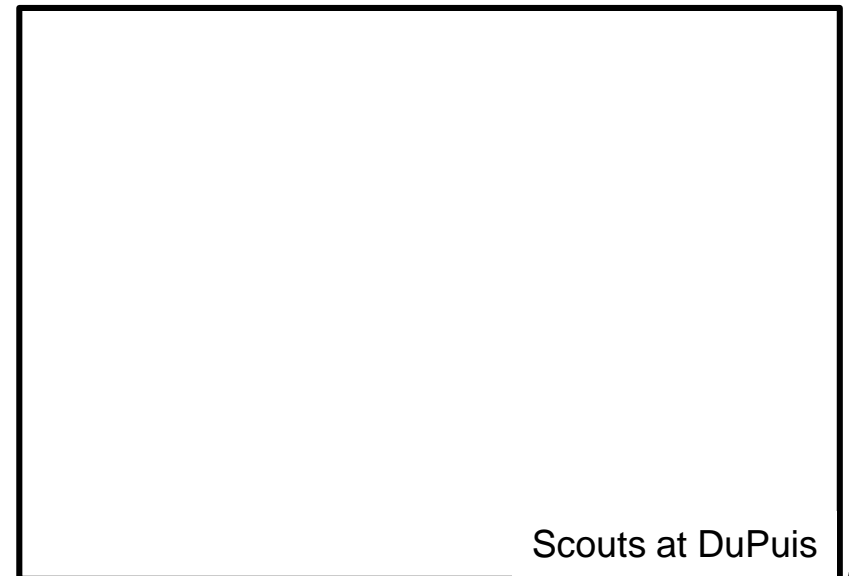


Volunteer env. education



Volunteer Program

- Types of Volunteer Opportunities on District Lands...
 - Group: Events or projects
 - Ex. plantings, litter and debris clean-ups, public use facility improvements...
 - Individual: On-going
 - Lead public tours, environmental education programs.
 - Trail and facility maintenance.
 - Field surveys and monitoring.
 - Campground hosts.





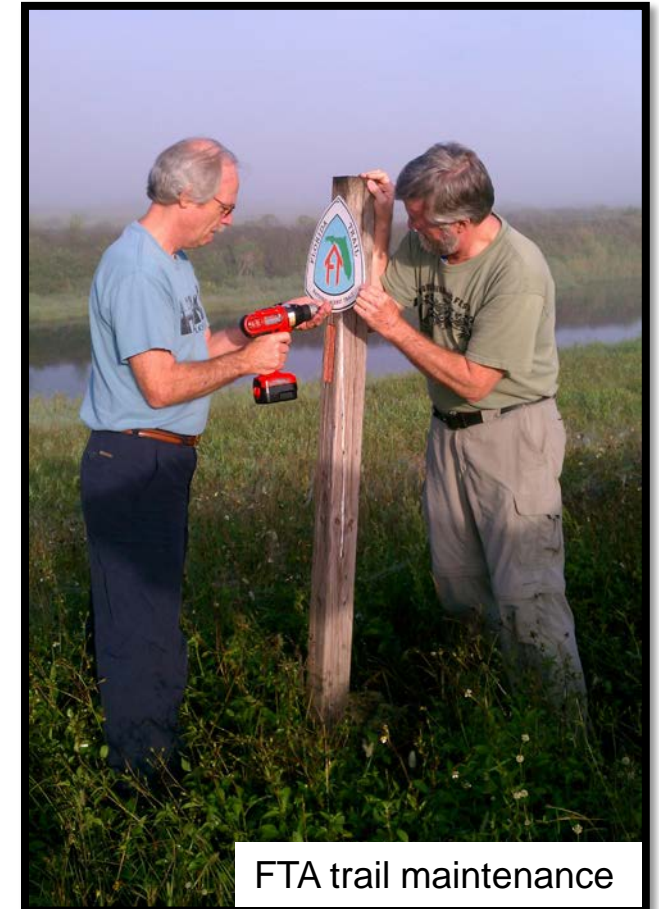
Volunteer Program

➤ Benefits of Volunteering:

- Rewarding, and a meaningful way to contribute to the conservation of Florida's water resources and public lands!



Volunteers assembling picnic tables



FTA trail maintenance



Volunteer Program

- Upcoming 2020 Volunteer Projects:
- Install signage and remove old fence posts if needed along the Kissimmee River at Blanket Bay Slough.
 - Remove old fence posts and debris in the Upper Chain of Lakes at Rough Island.
 - Collect native hibiscus seeds by airboat along the Kissimmee River for plantings at the C-139 Restoration Project.



Volunteer waterway cleanup



Volunteer Project Highlight

➤ Volunteer Project Background:

- New public use shelter requested to be built by volunteers located in Polk County within the Kissimmee Chain of Lakes (Rough Island West) on District lands.
- Prior to the project District staff and volunteers evaluated the existing “Cowboy Camp” that was located at the Rough Island West property. Structure was no longer functional and was removed.



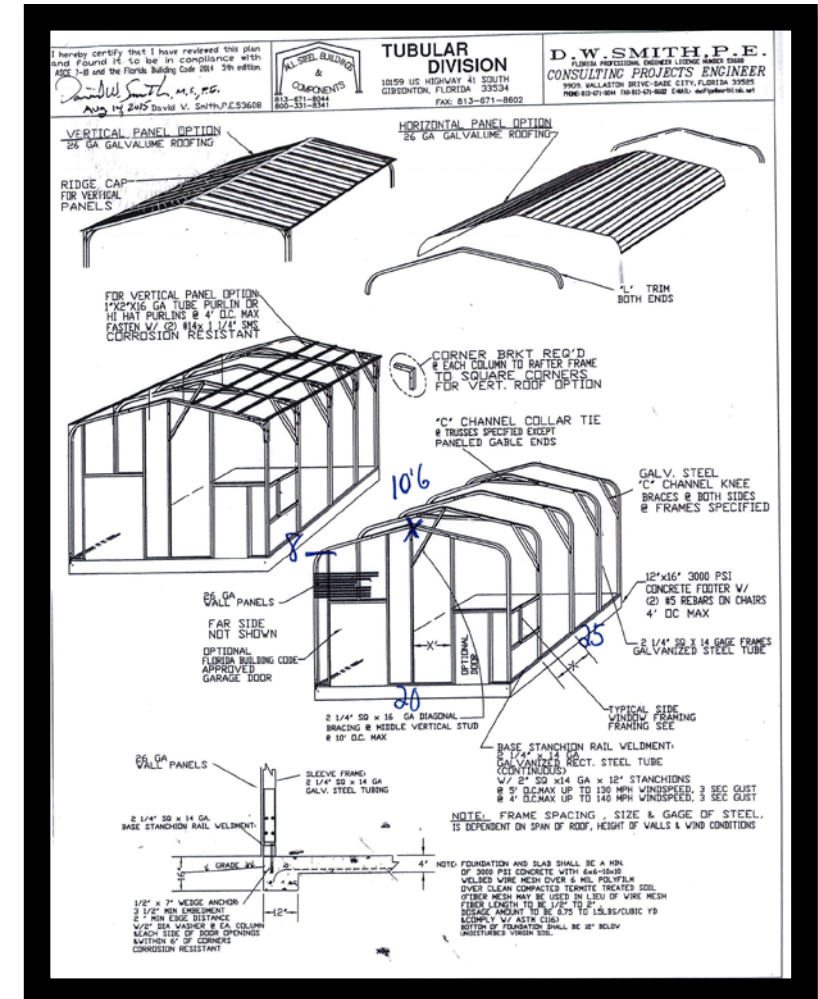
“Cowboy Camp”



Volunteer Project Highlight

➤ Volunteer Project Background:

- In early 2018 a volunteer project agreement was initiated with the Kissimmee River Valley Sportsmen's Association (KRVSA) to construct a public use shelter to be built where existing structure was removed.
- KRVSA supplied engineered designs of 20' x 25' shelter, permitting, and construction oversight.





Volunteer Project Highlight

➤ Project included:

- Cleaning area of debris.
- Hauling materials to the project area.
- Installation of concrete slab.
- Construction of shelter.





Volunteer Project Highlight

➤ Volunteer Project Costs:

- Equipment, tools & services: \$21,960
- Shelter & tables: \$ 4,600
- Volunteers- 560 hours \$13,462
- Total Project Cost: **\$40,022**



Finished shelter



Volunteer Project Highlight

- Dedication of Shelter on Saturday November 16th, 2019
 - Over 90 people in attendance.
 - A Big Thank You to KRVSA & all the volunteers who participated in making this happen!





THANK YOU!

➤ Interested in Volunteering for the District:

- Go to the District's website at:
- <https://www.sfwmd.gov/community-residents/volunteering>
- Participate in existing recreation organizations
- Contact Land Manager or District's Regional Representative
- Contact the District directly at:
 - 561-682-6640 or bjkattel@sfwmd.gov

