



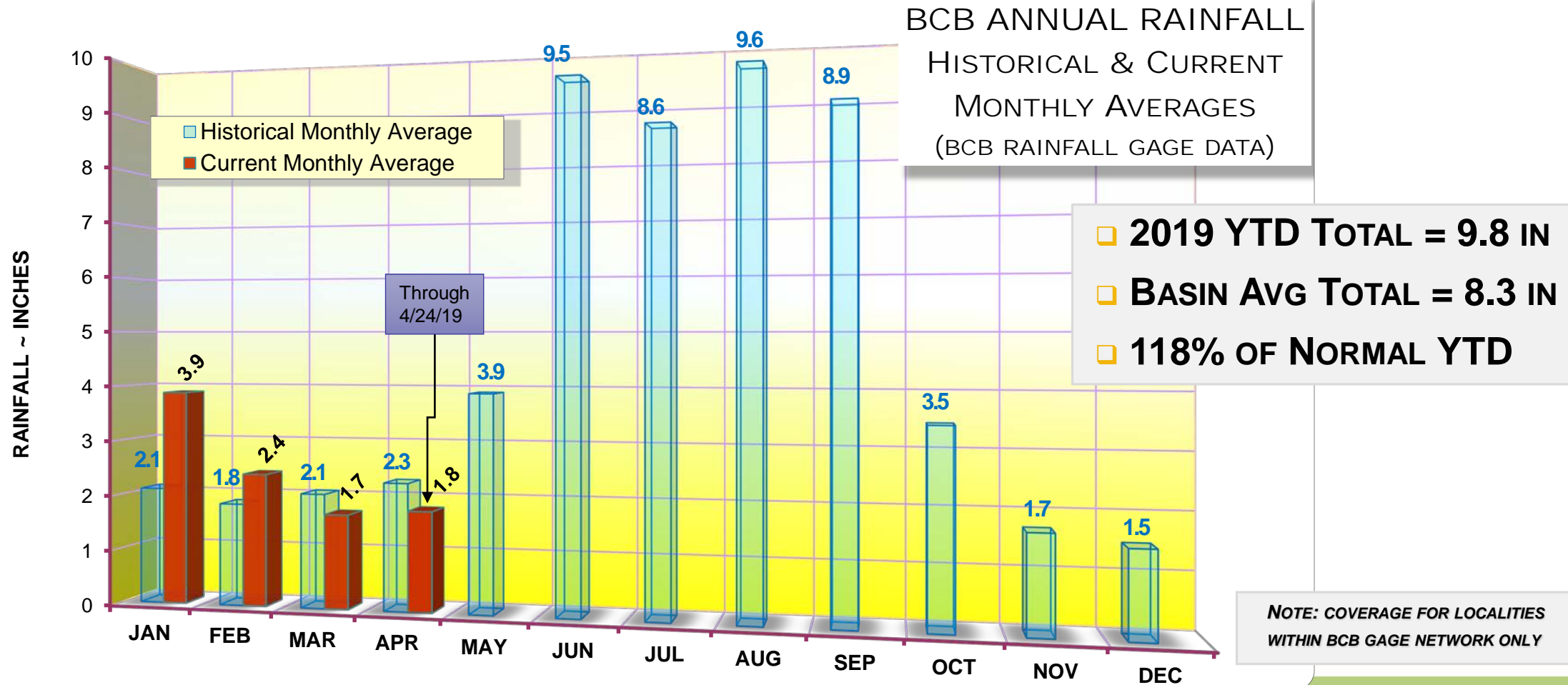
BIG CYPRESS BASIN BOARD MEETING

BCB WATER CONDITION REPORT
April 25, 2019

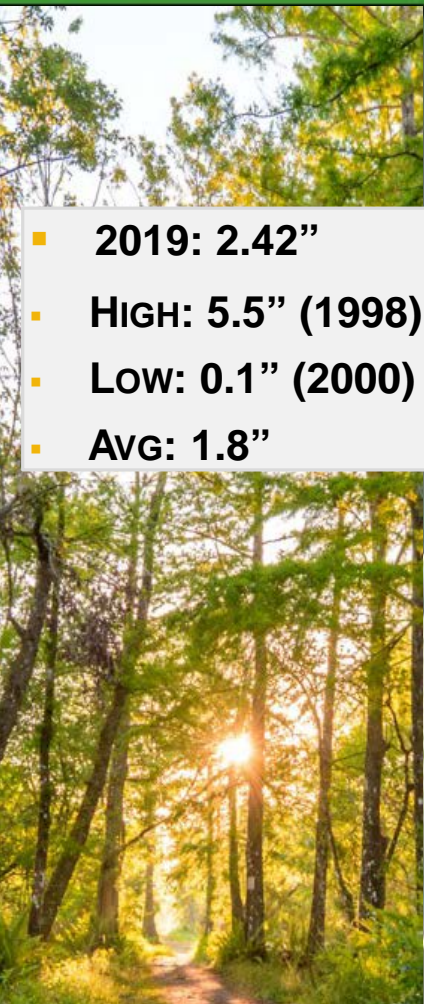
Brad J Jackson, P.E., CFM
Principal Engineer
Big Cypress Basin

Hydrologic Conditions ~ BCB Gage Rainfall

2019 MONTHLY SUMMARY



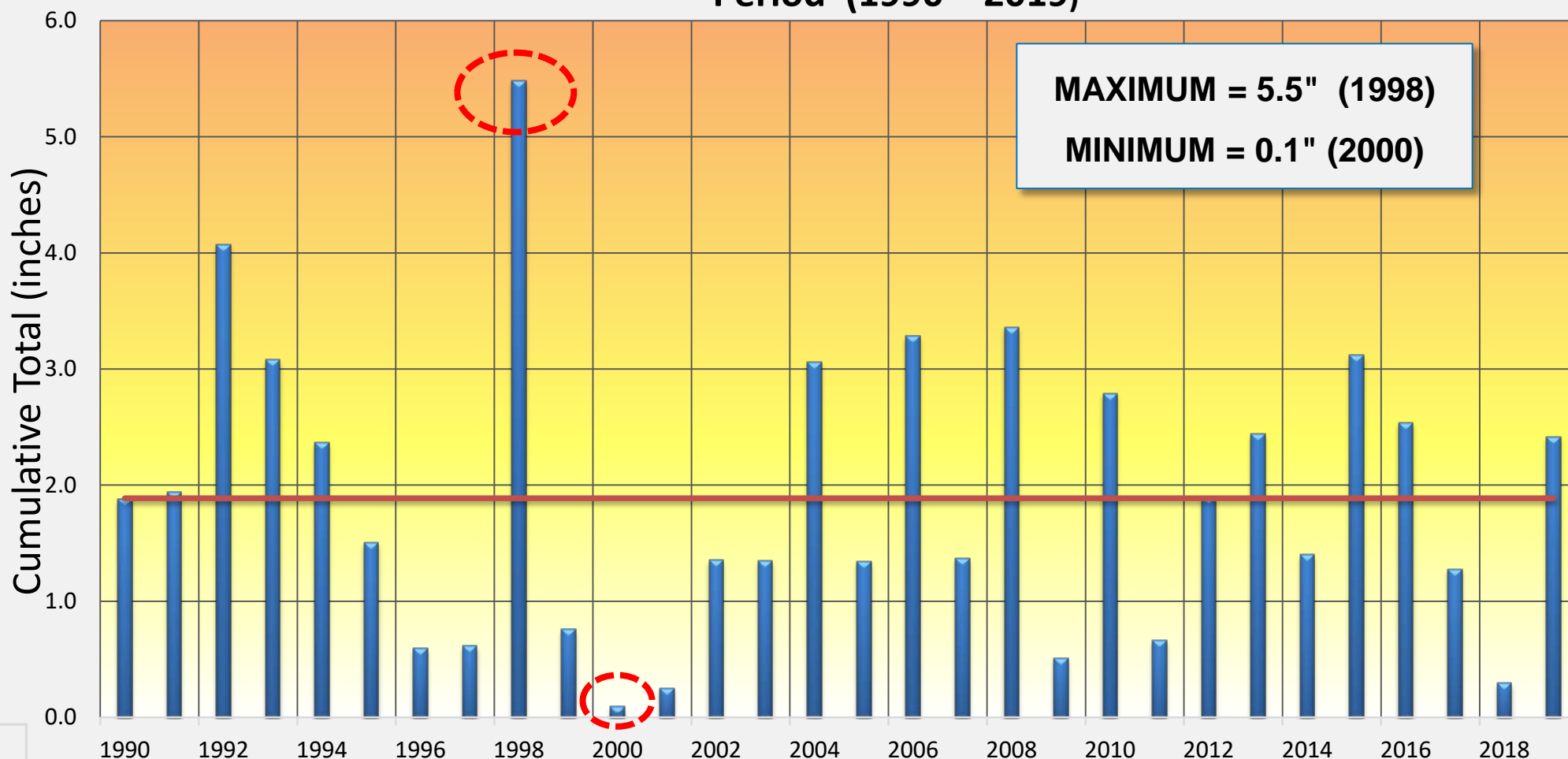
BCB February Rainfall ~ Historical



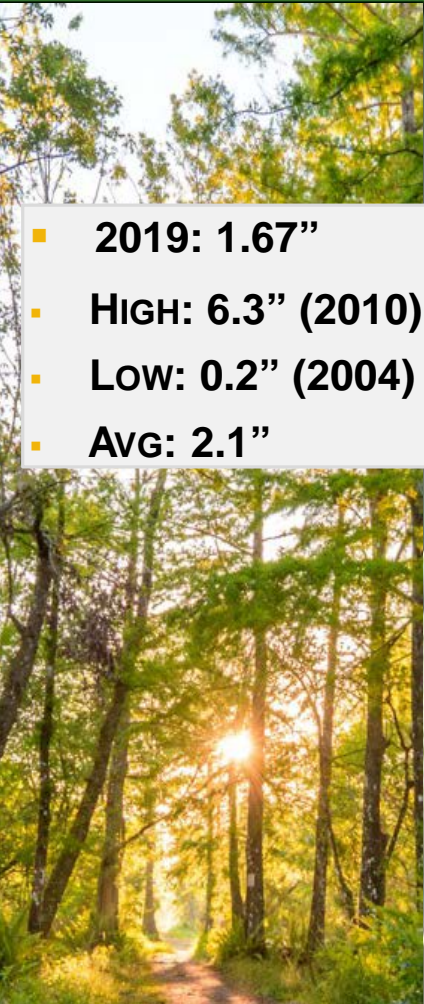
- 2019: 2.42"
- High: 5.5" (1998)
- Low: 0.1" (2000)
- Avg: 1.8"

NOTE: COVERAGE FOR LOCALITIES
WITHIN BCB GAGE NETWORK ONLY

BCB FEBRUARY RAINFALL
Period (1990 ~ 2019)

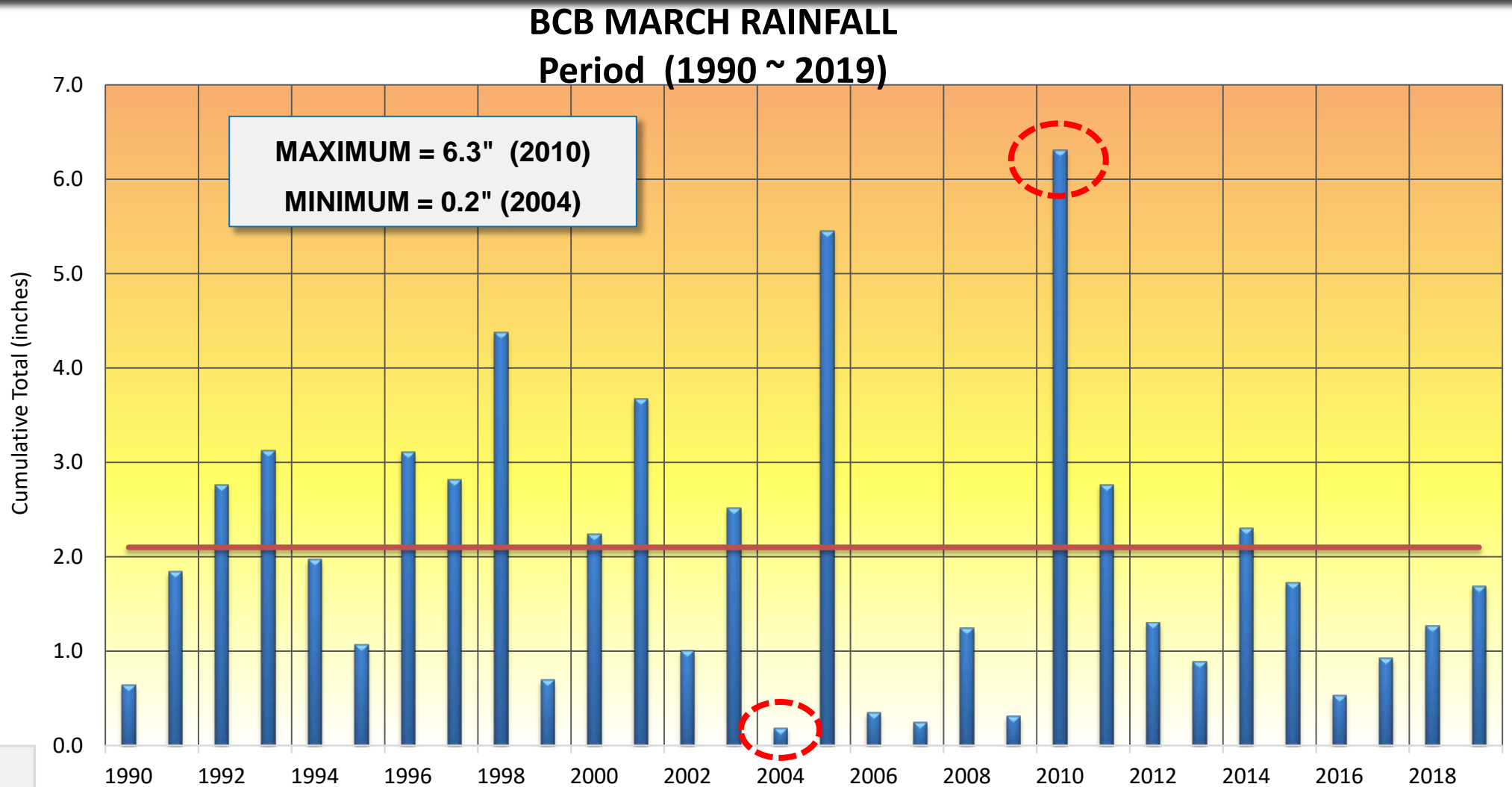


BCB March Rainfall ~ Historical

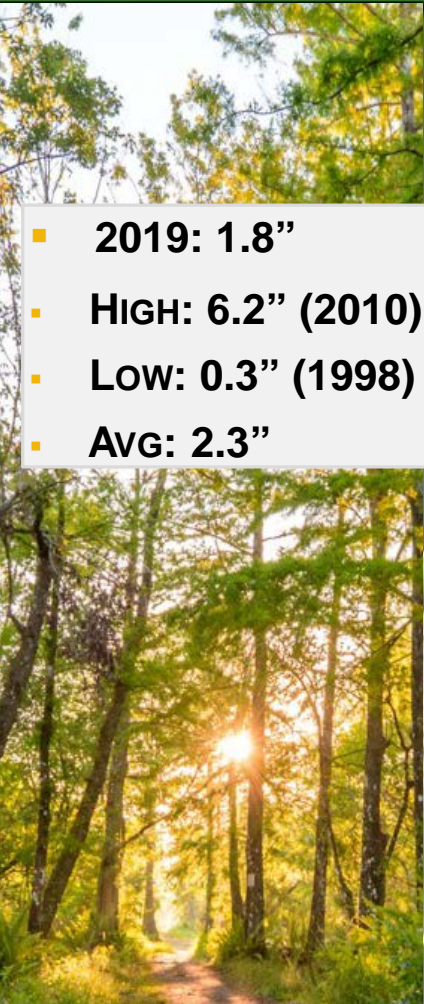


- 2019: 1.67"
- High: 6.3" (2010)
- Low: 0.2" (2004)
- Avg: 2.1"

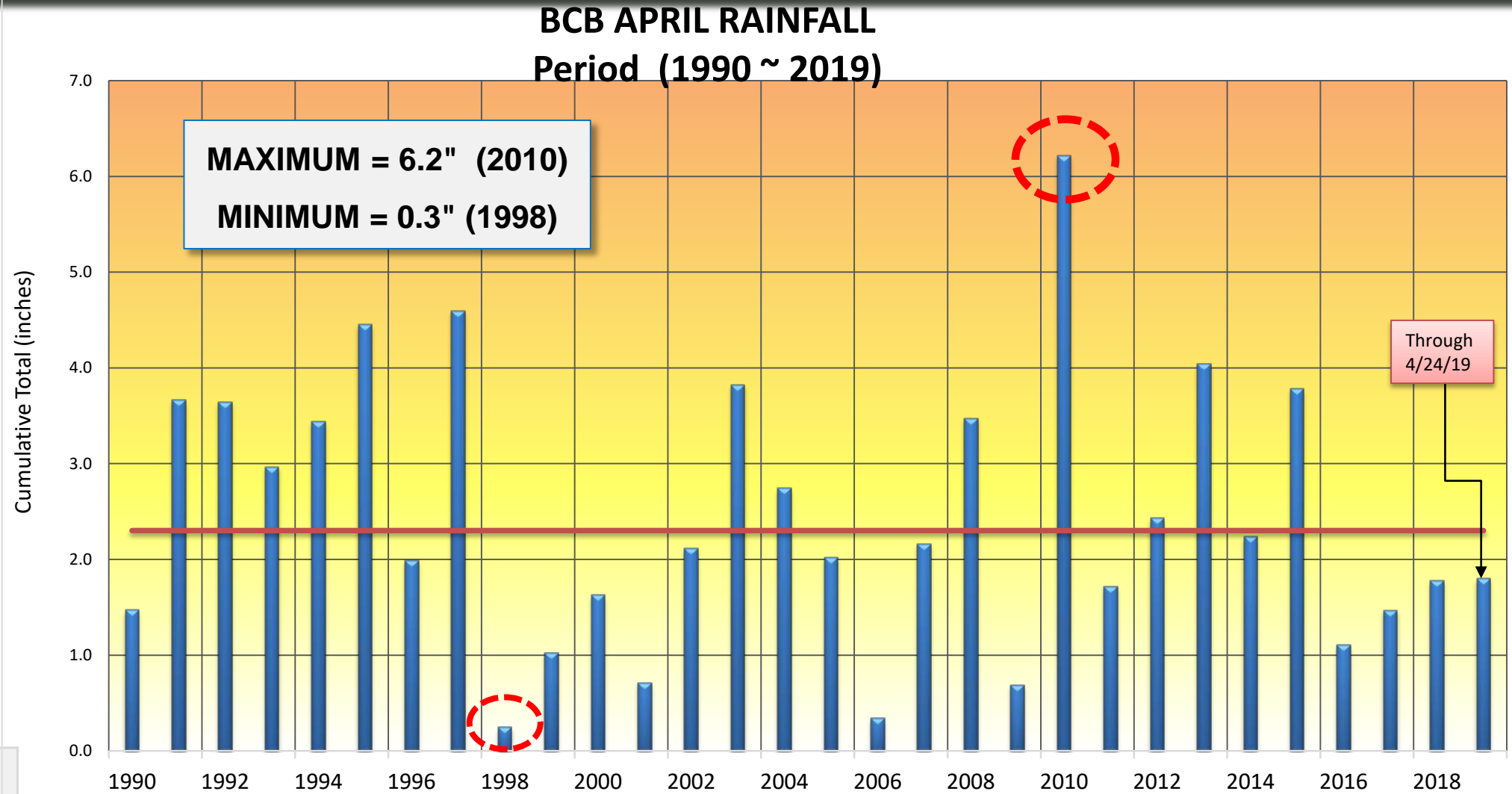
NOTE: COVERAGE FOR LOCALITIES
WITHIN BCB GAGE NETWORK ONLY



BCB April Rainfall ~ Historical

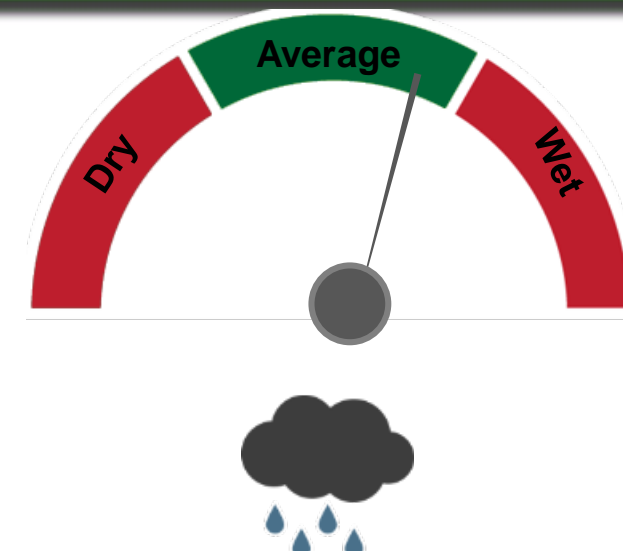
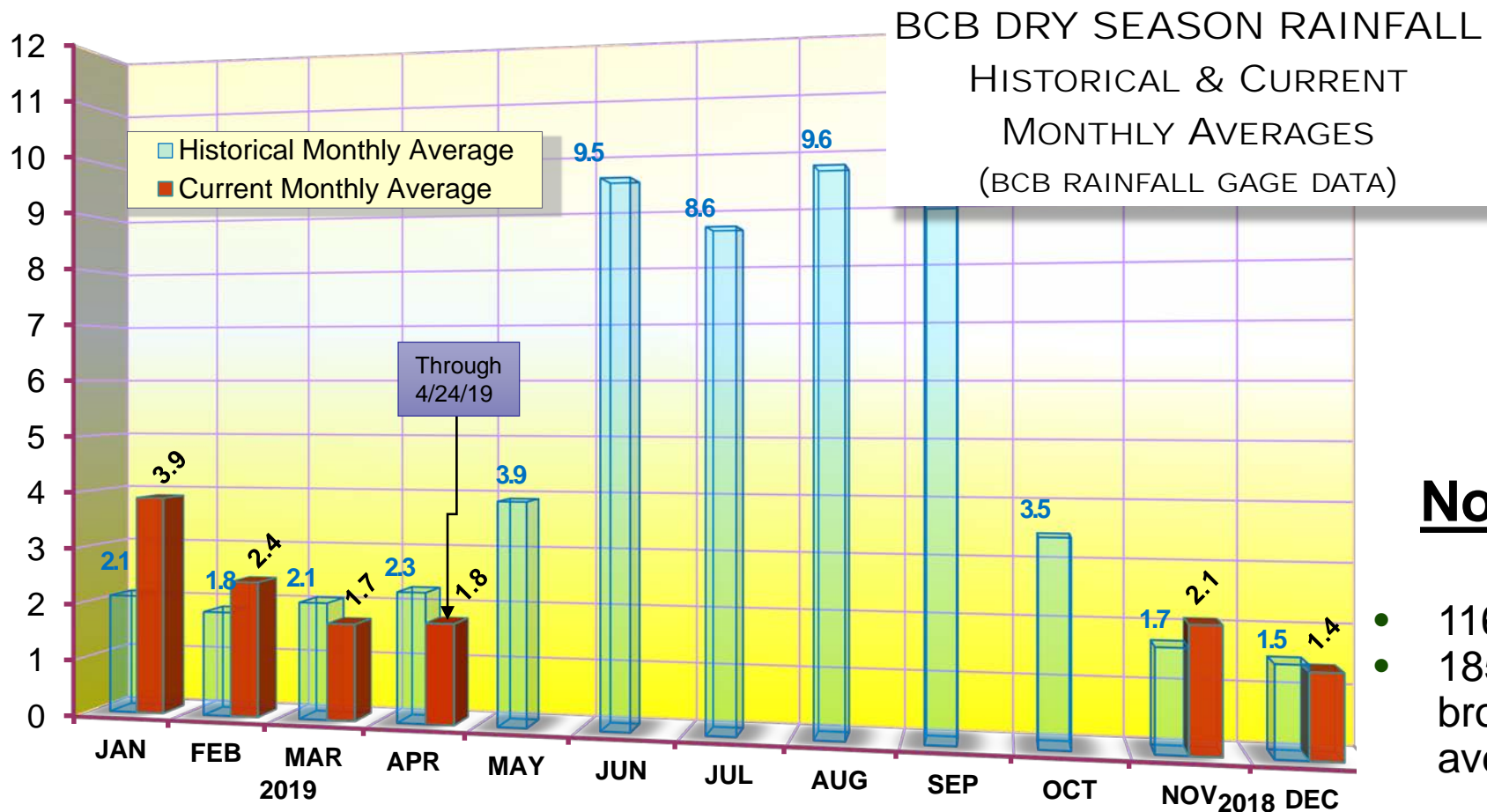


- 2019: 1.8"
- High: 6.2" (2010)
- Low: 0.3" (1998)
- Avg: 2.3"



NOTE: COVERAGE FOR LOCALITIES
WITHIN BCB GAGE NETWORK ONLY

BCB Dry Season Summary

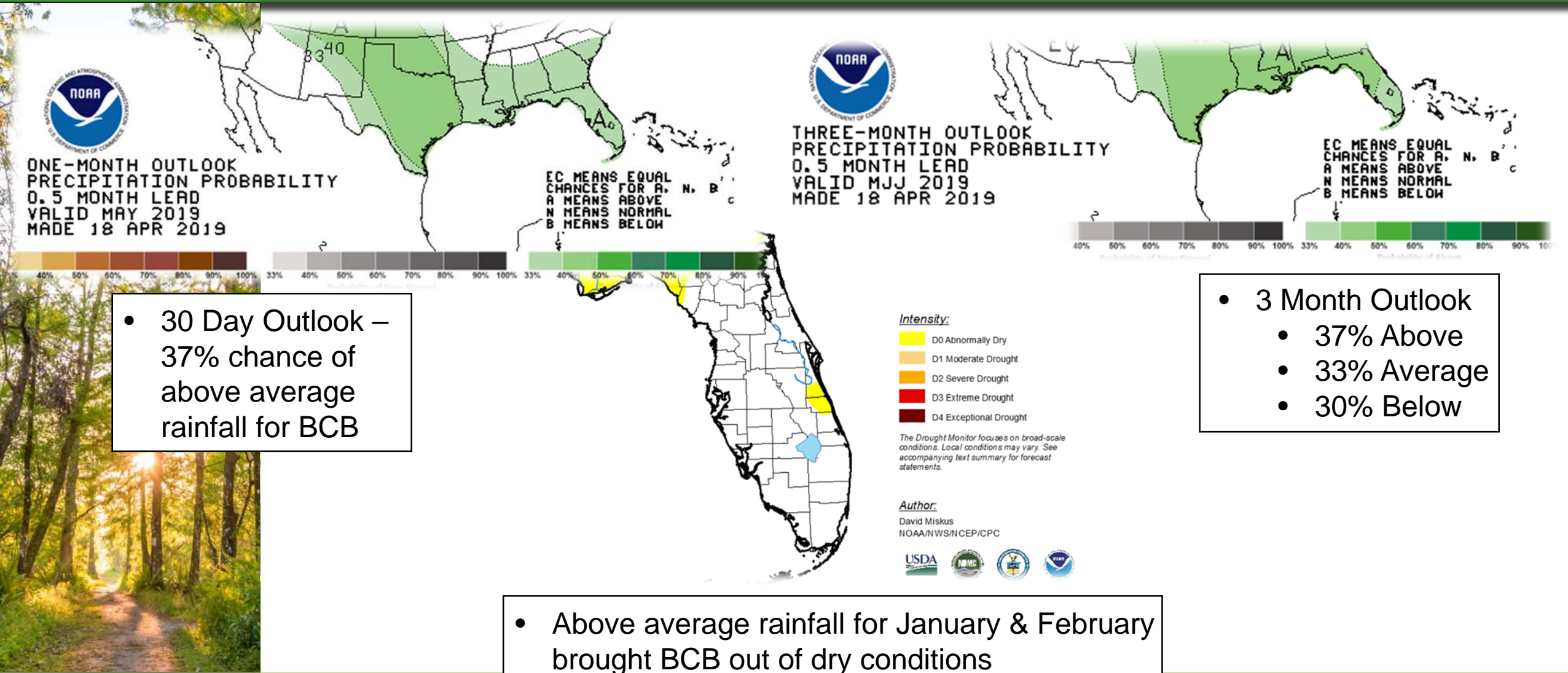


Dry Season Rainfall
Nov 1, 2018 – Apr 24, 2019

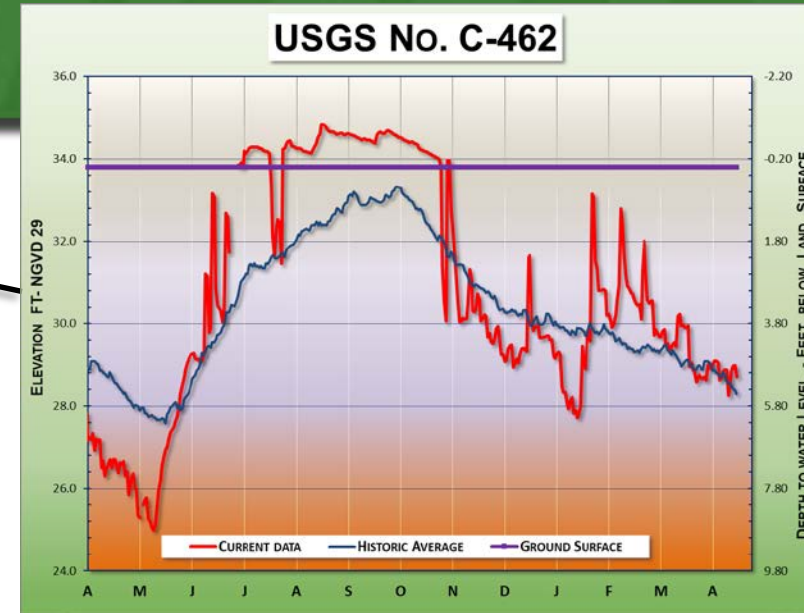
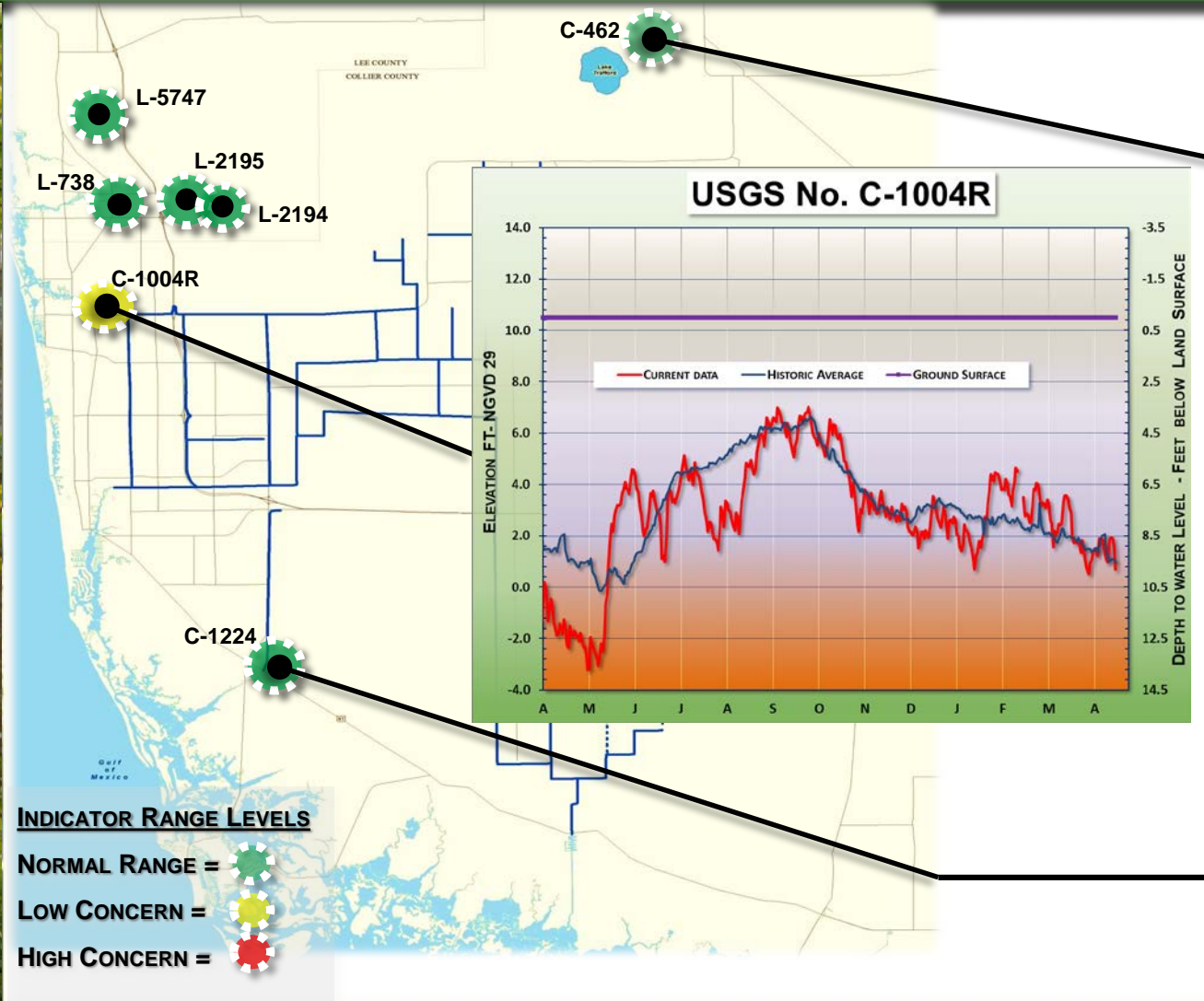
BCB Total Rainfall: 13.3"

- 116% of average, 1.8" surplus
- 185% of average January rainfall brought the dry season above average

Drought Monitor & Long-Range Rain Outlook



Groundwater Level Trends



Curry Dry Season Operation Comparison

CORKSCREW CANAL

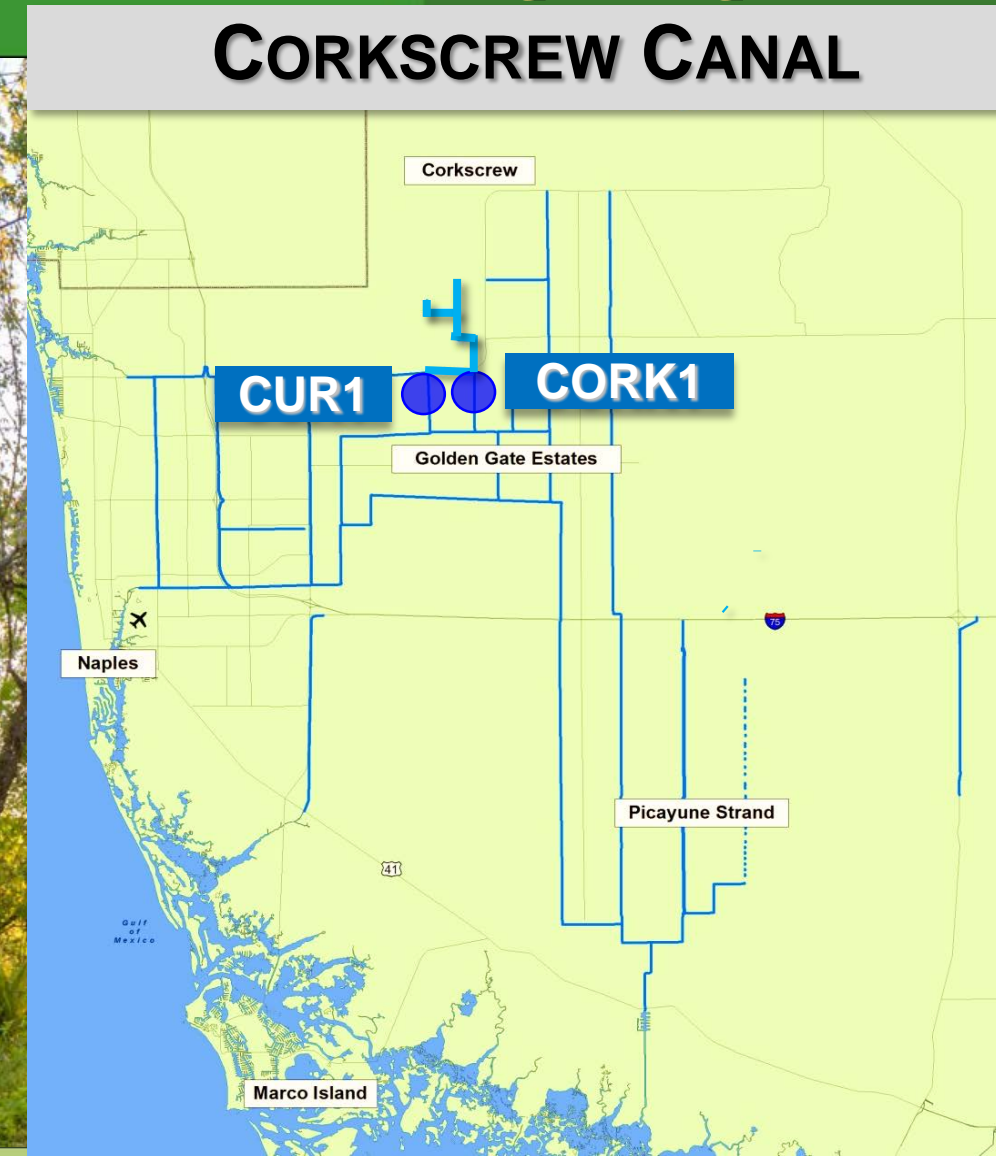
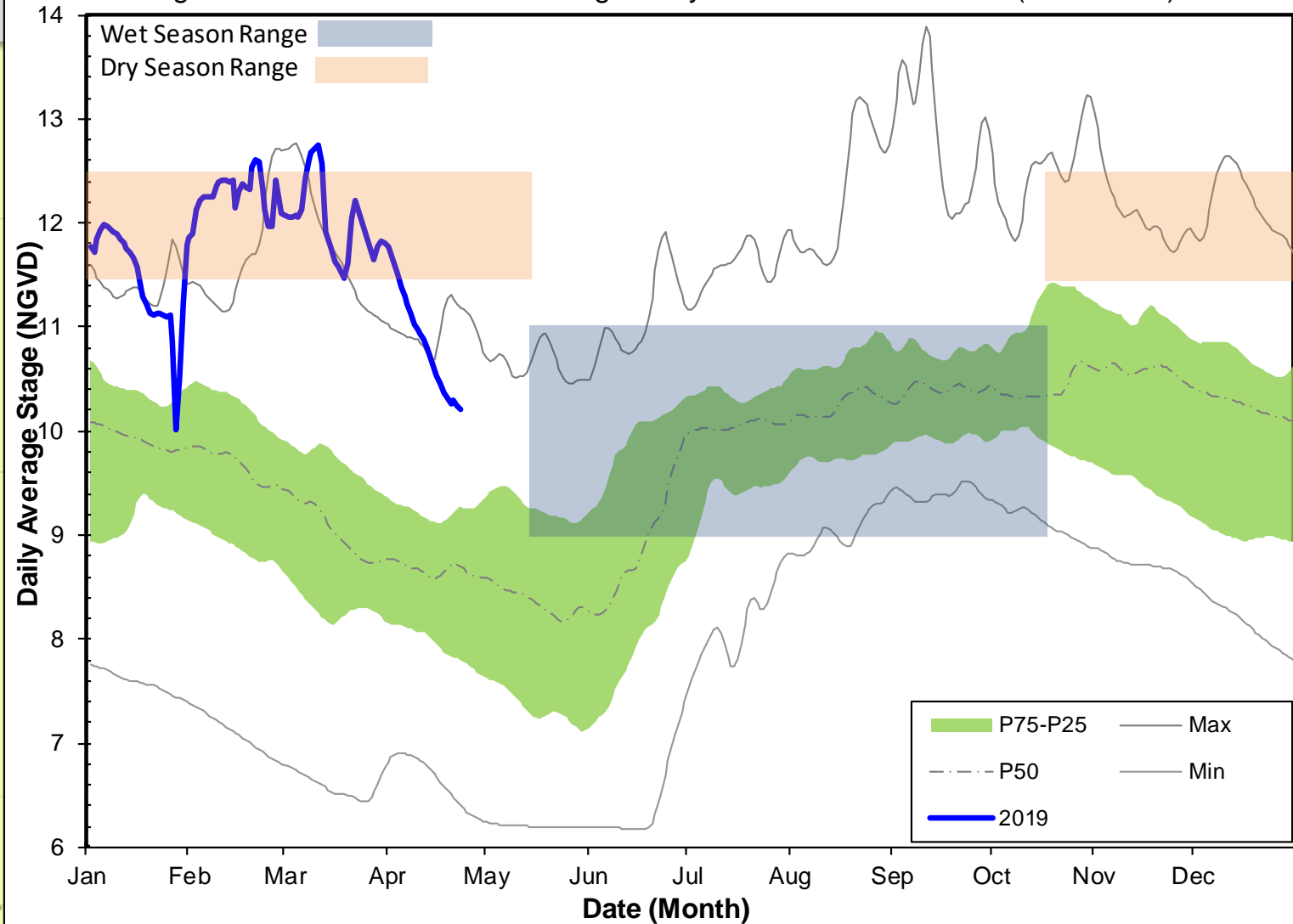
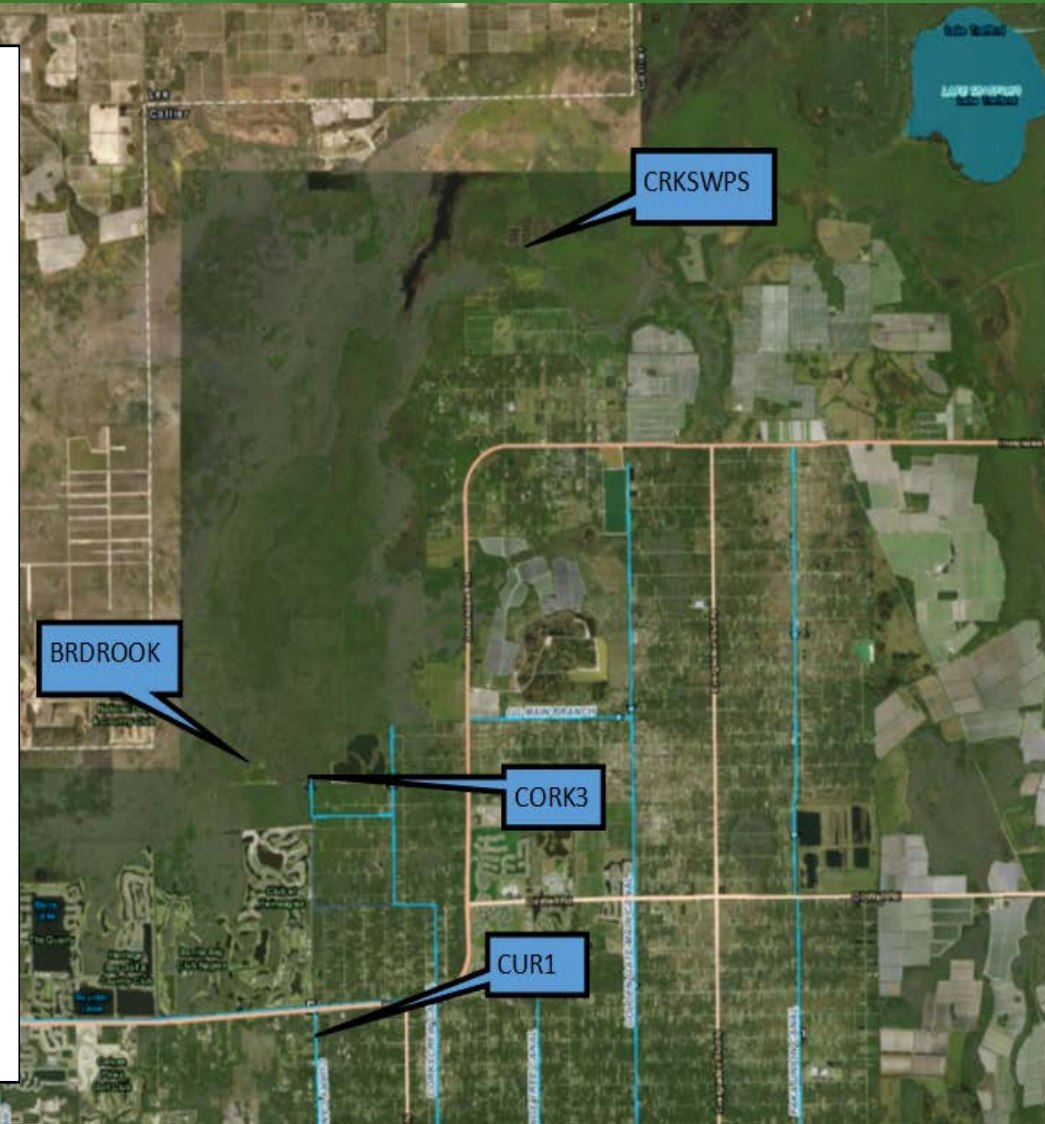
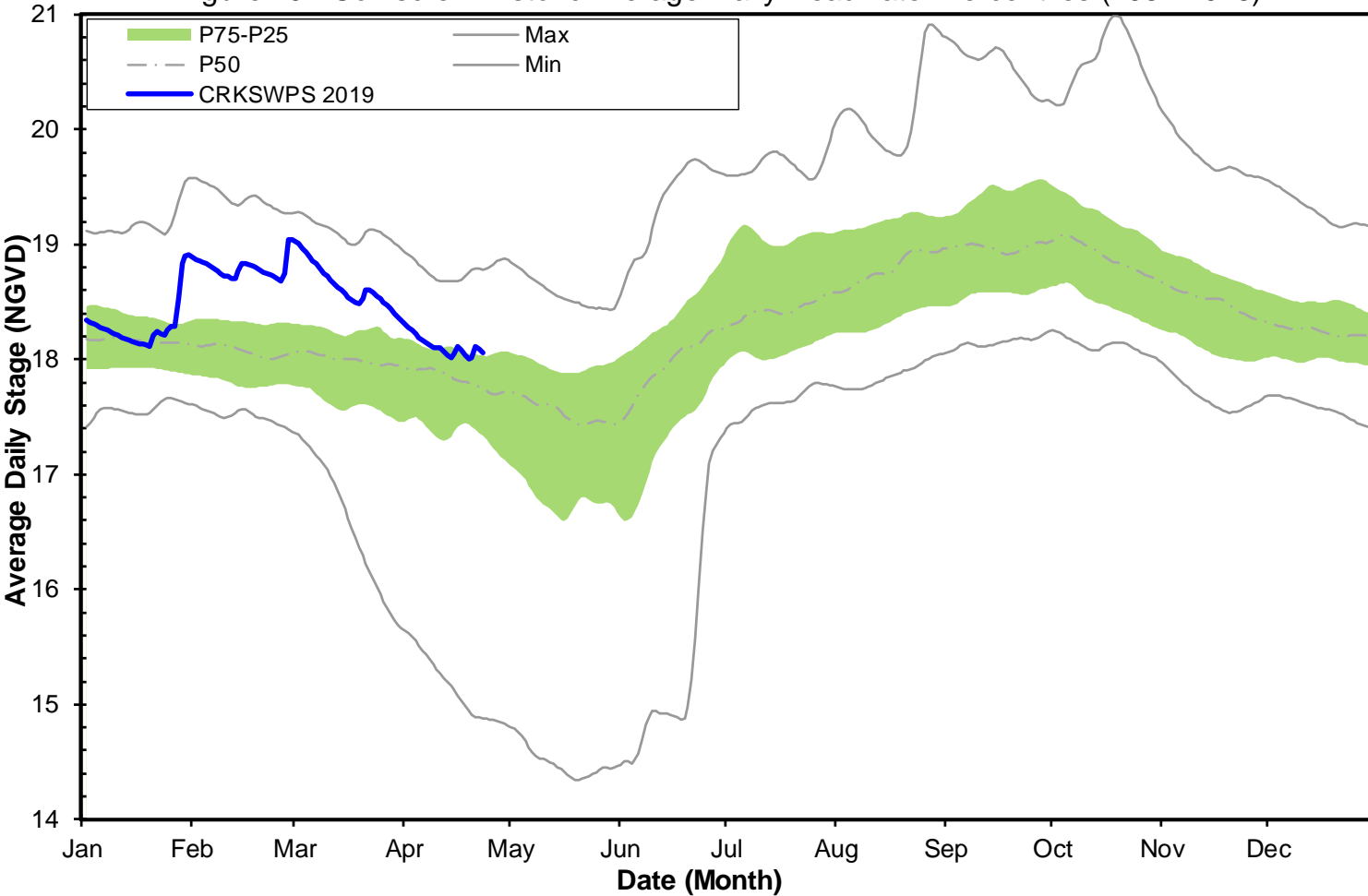


Figure 6C - CORK1 Historic Average Daily Headwater Percentiles (1989-2018)



Corkscrew Average Daily Track

Figure 10 - Corkscrew Historic Average Daily Headwater Percentiles (1984-2018)



BCB Canal Levels ~ Daily Average Track

GOLDEN GATE MAIN

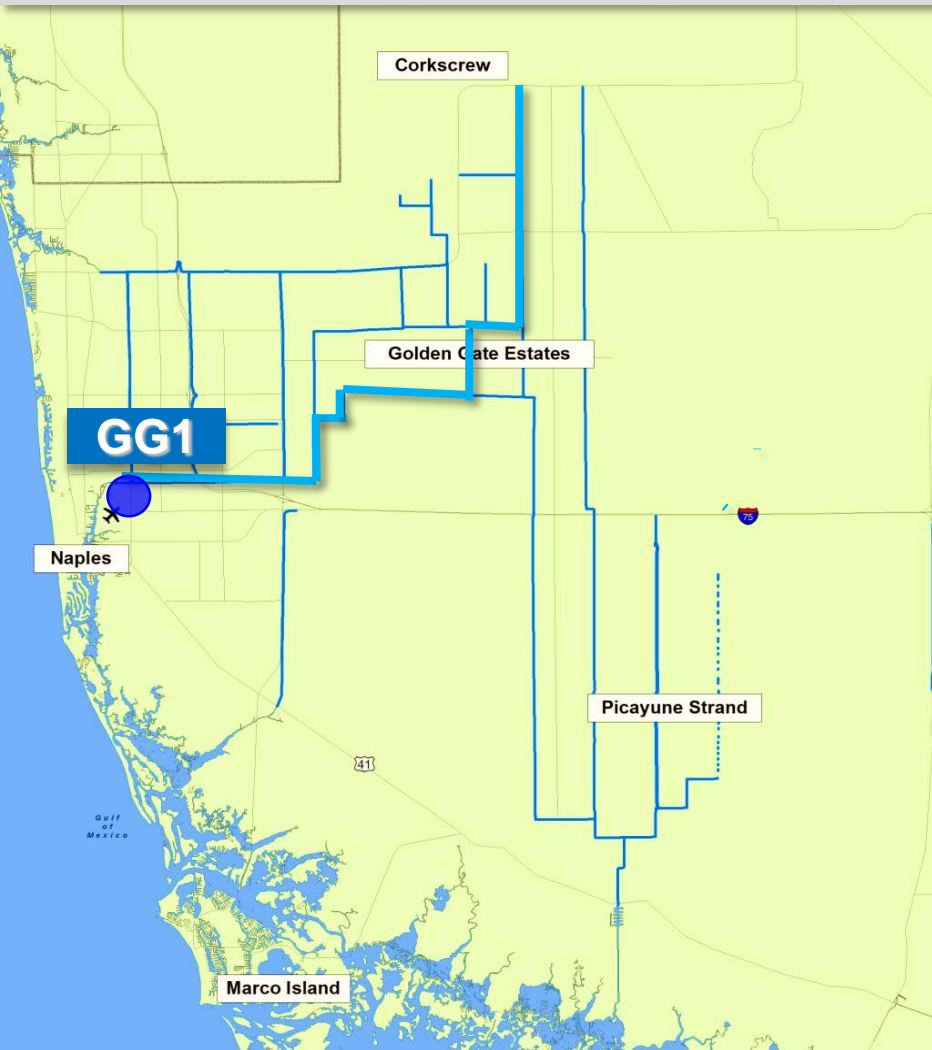
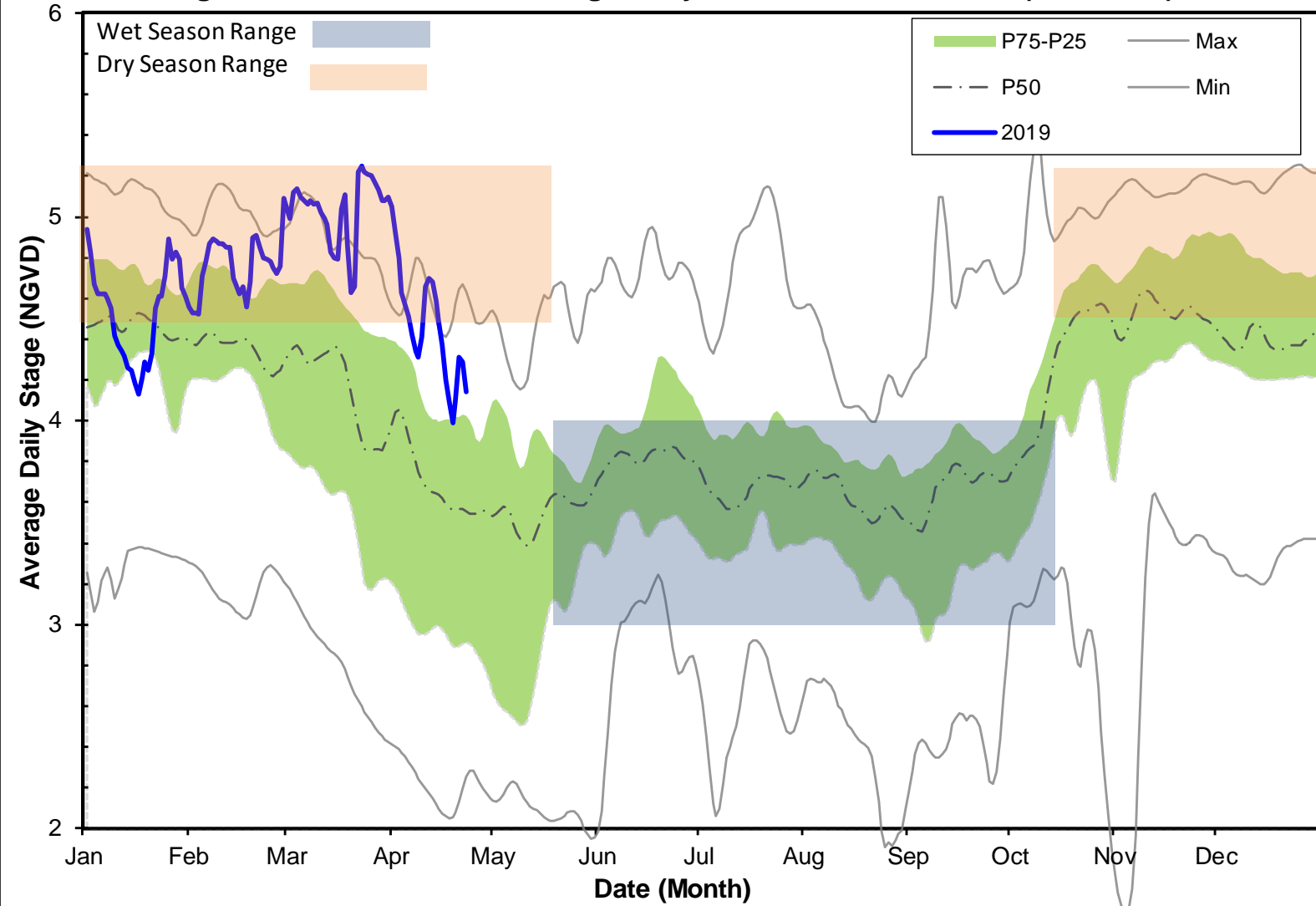


Figure 5A - GG1 Historic Average Daily Headwater Percentiles (2004-2018)



BCB Canal Levels ~ Daily Average Track

GOLDEN GATE MAIN

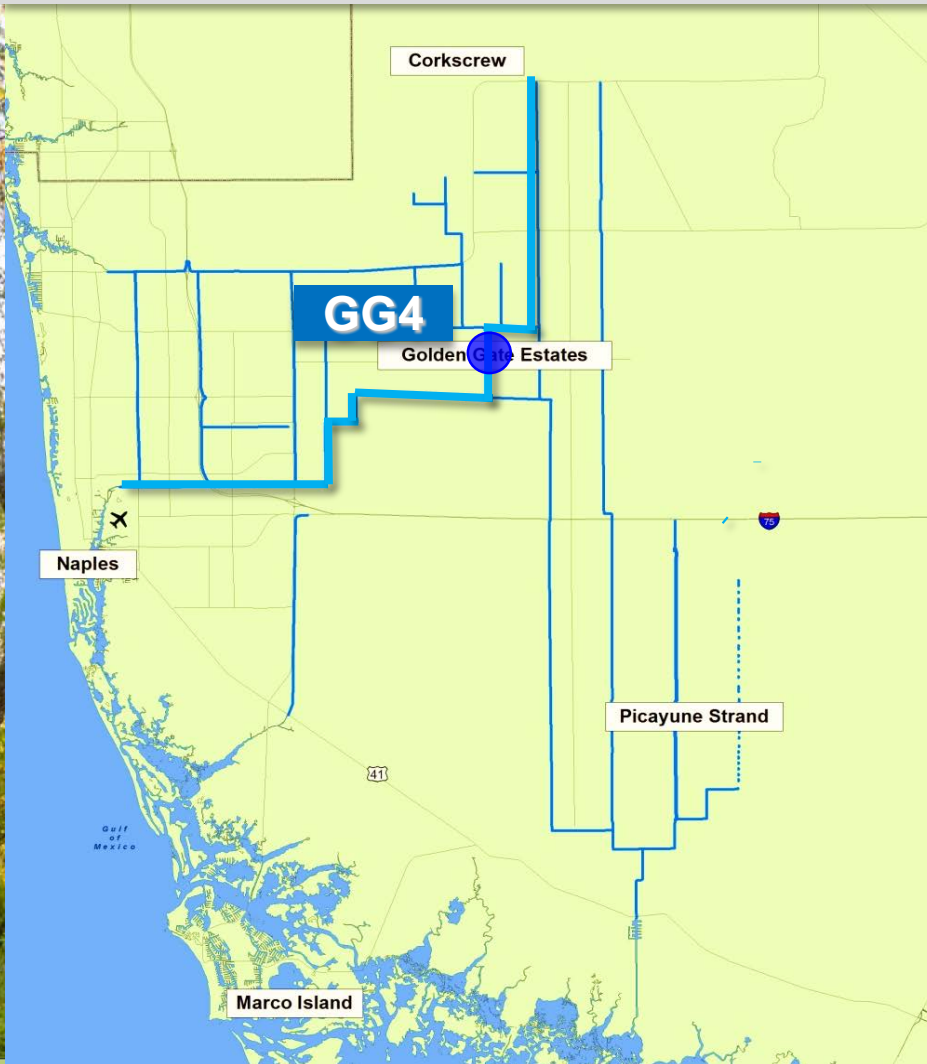
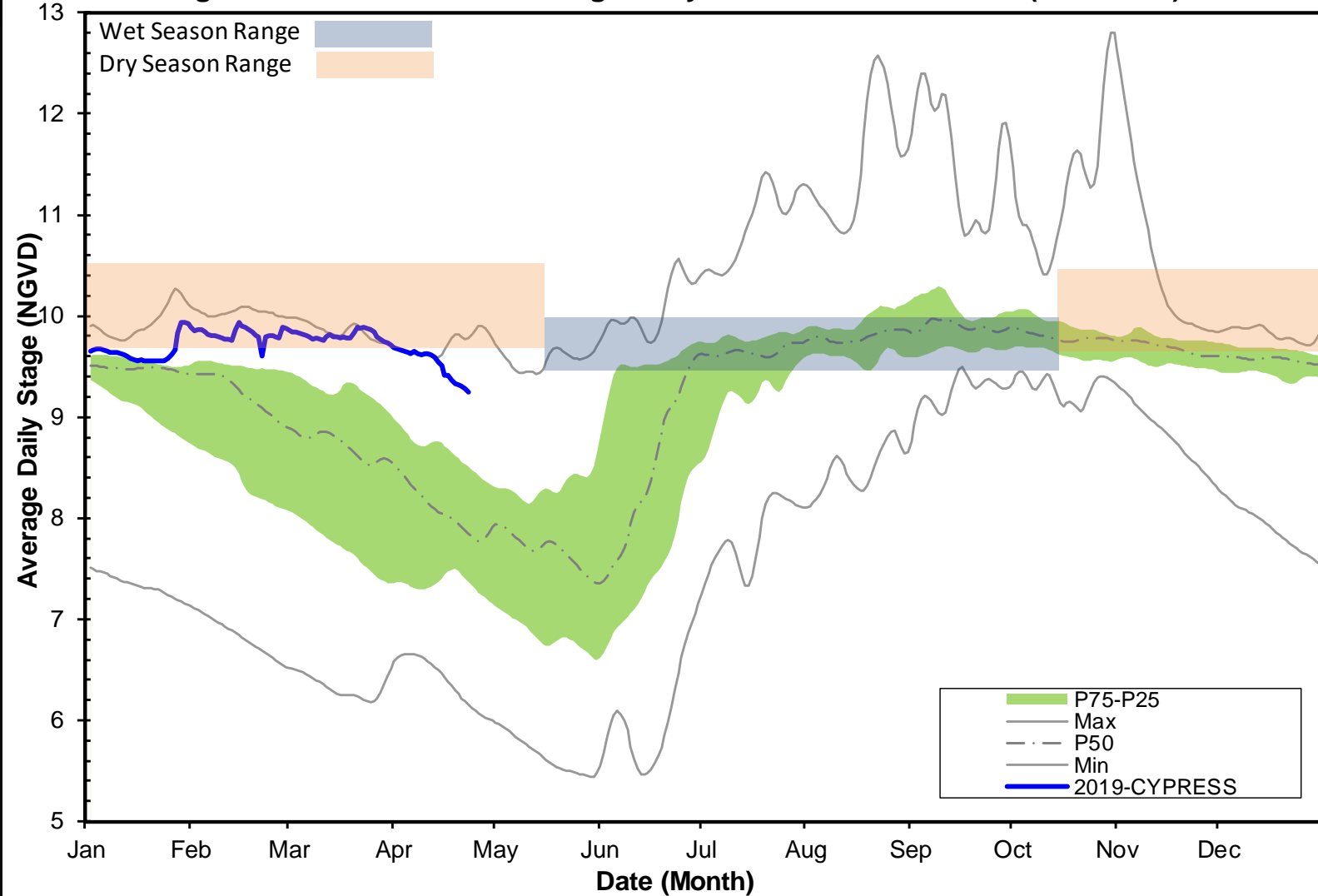


Figure 5B - GG4 Historic Average Daily Headwater Percentiles (1994-2017)



BCB Canal Levels ~ Daily Average Track

COCO HATCHEE CANAL

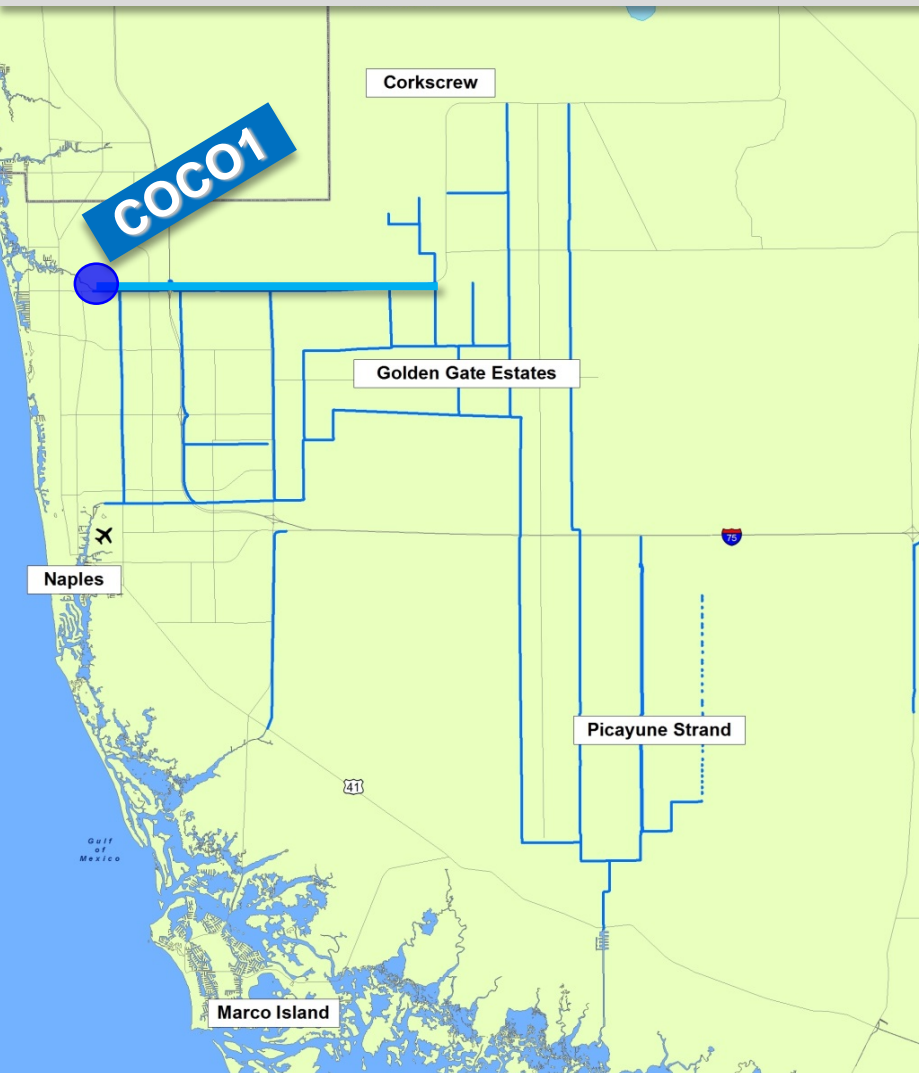
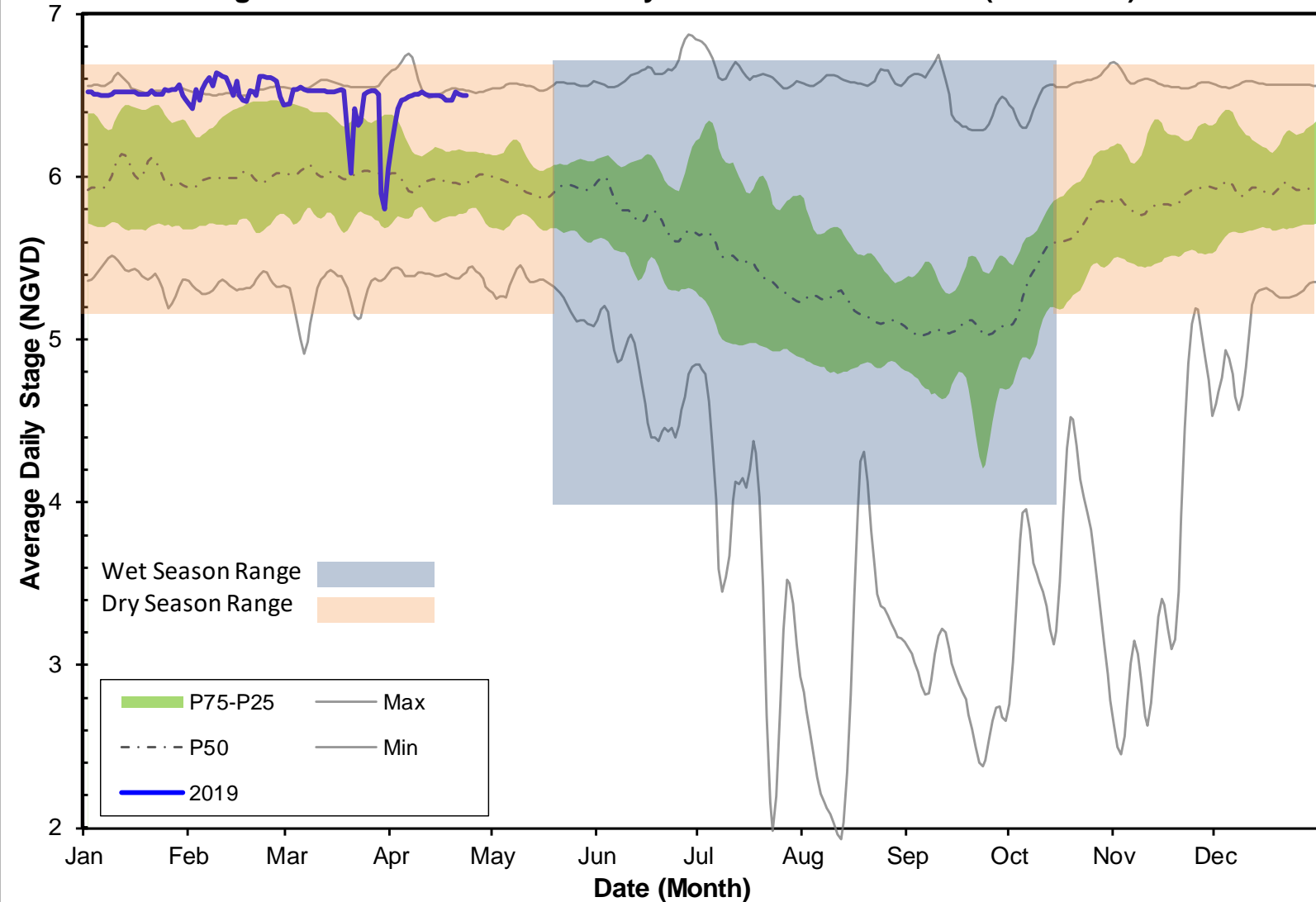


Figure 6A - COCO1 Historic Daily Headwater Percentiles (1994-2018)



BCB Canal Levels ~ Daily Average Track

COCO HATCHEE CANAL

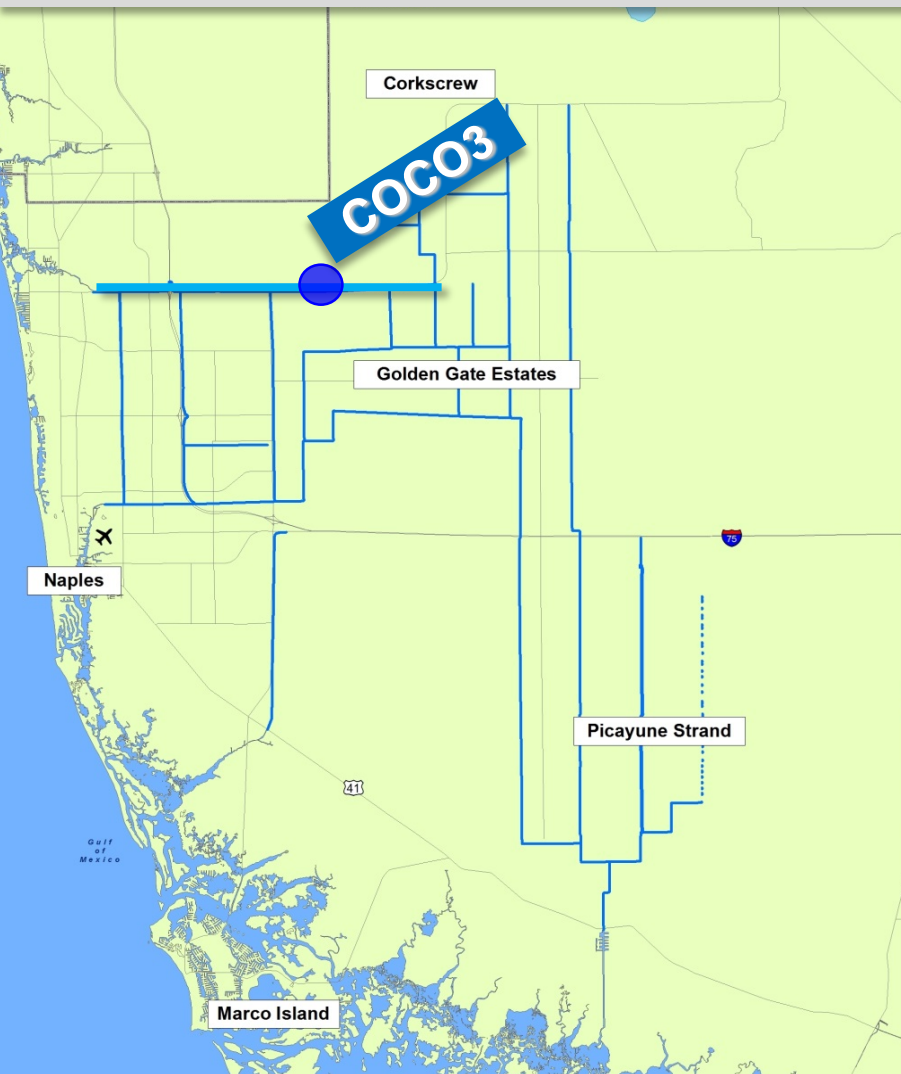
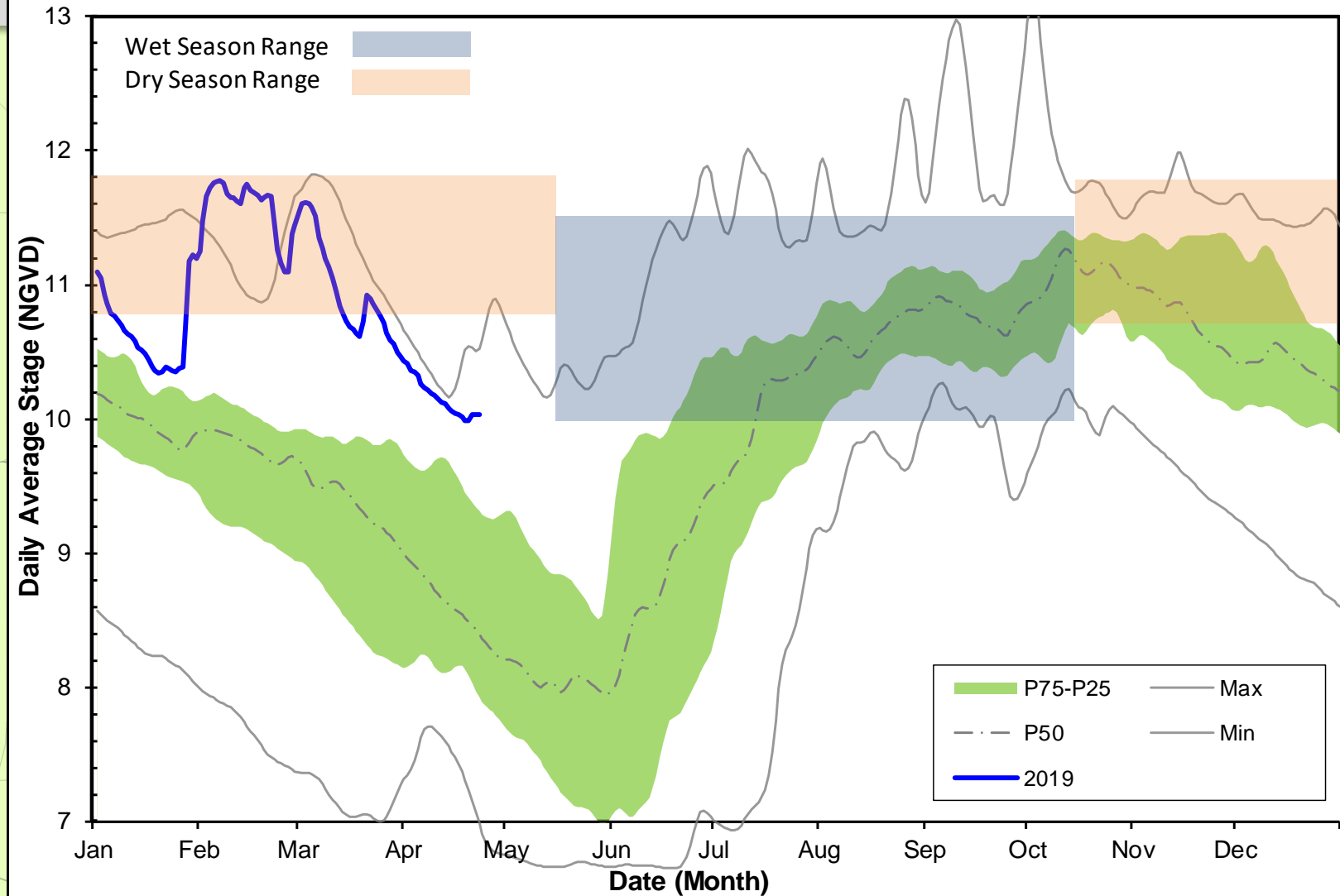


Figure 6B - COCO3 Historic Average Headwater Percentiles (2000-2018)



BCB Canal Levels ~ Daily Average Track

FAKA UNION CANAL

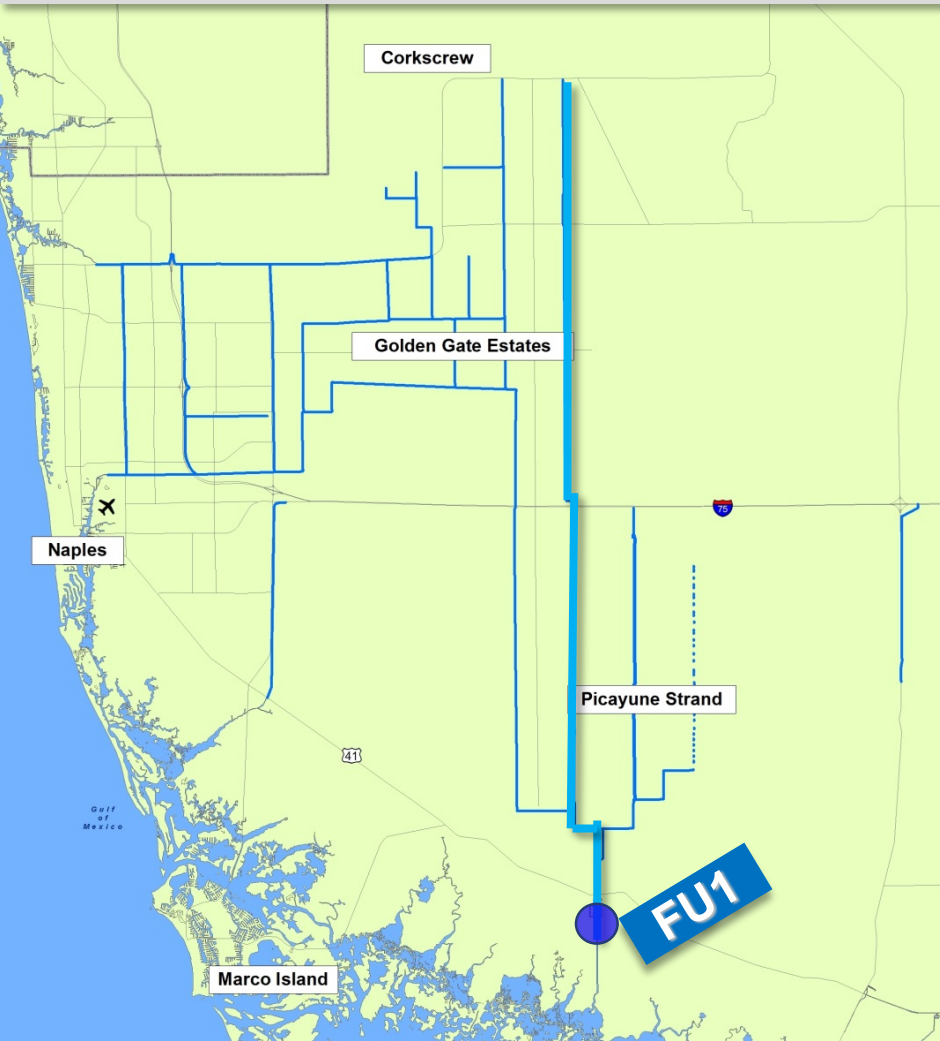
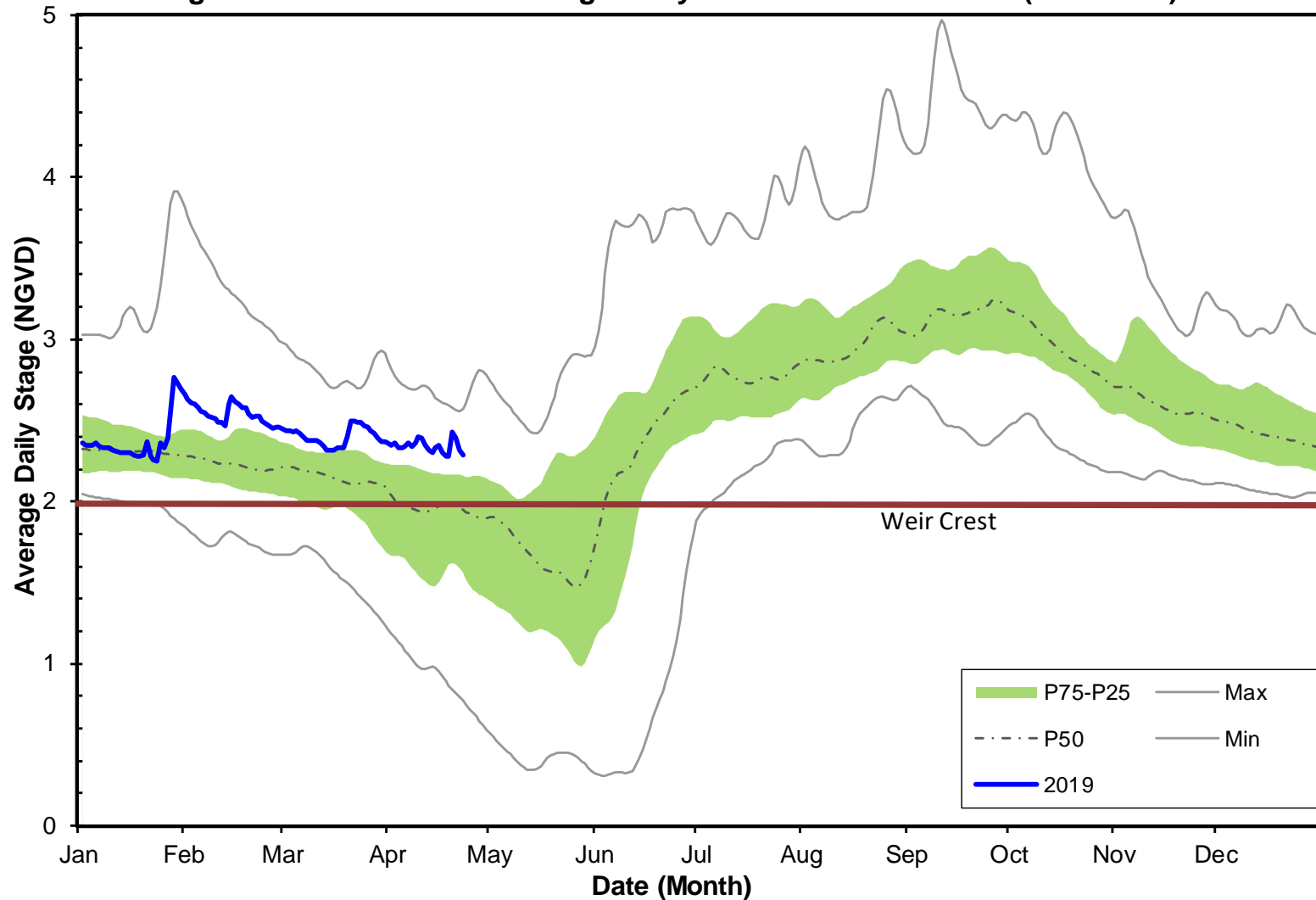


Figure 7A - FU1 Historic Average Daily Headwater Percentiles (1984-2018)



BCB Canal Levels ~ Daily Average Track

FAKA UNION CANAL

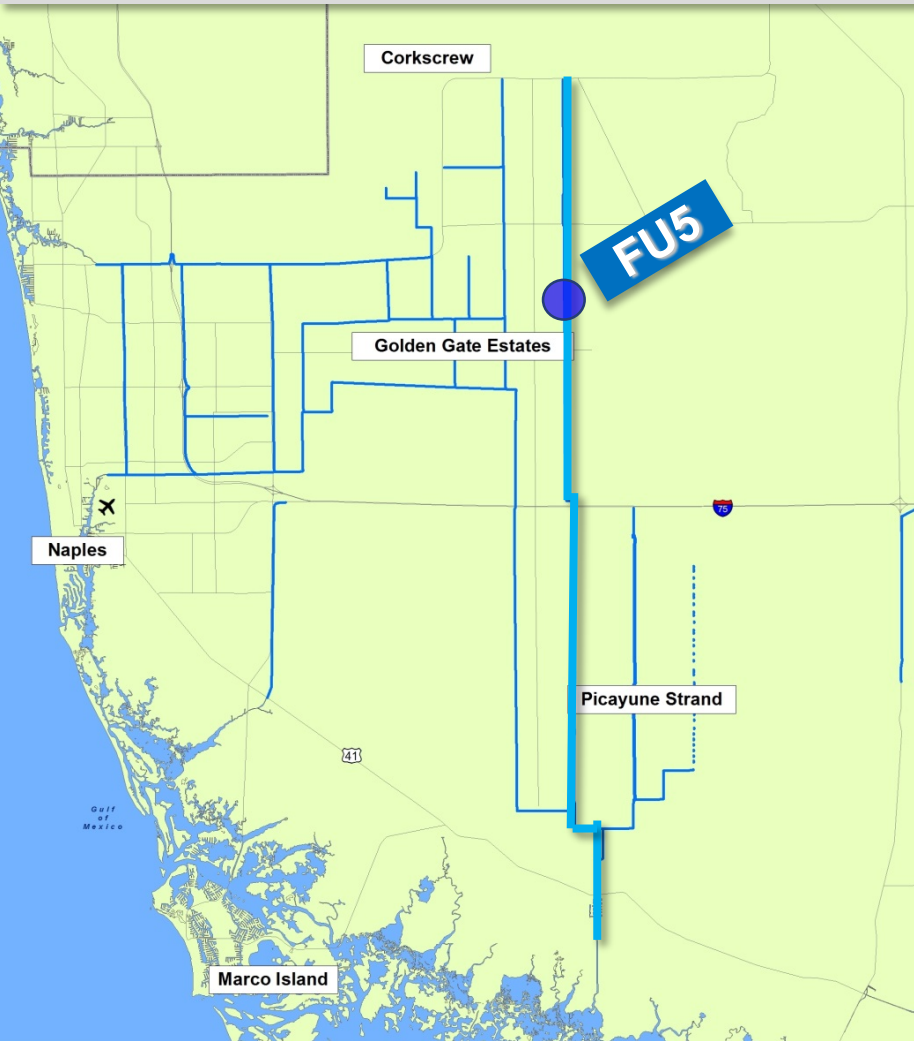
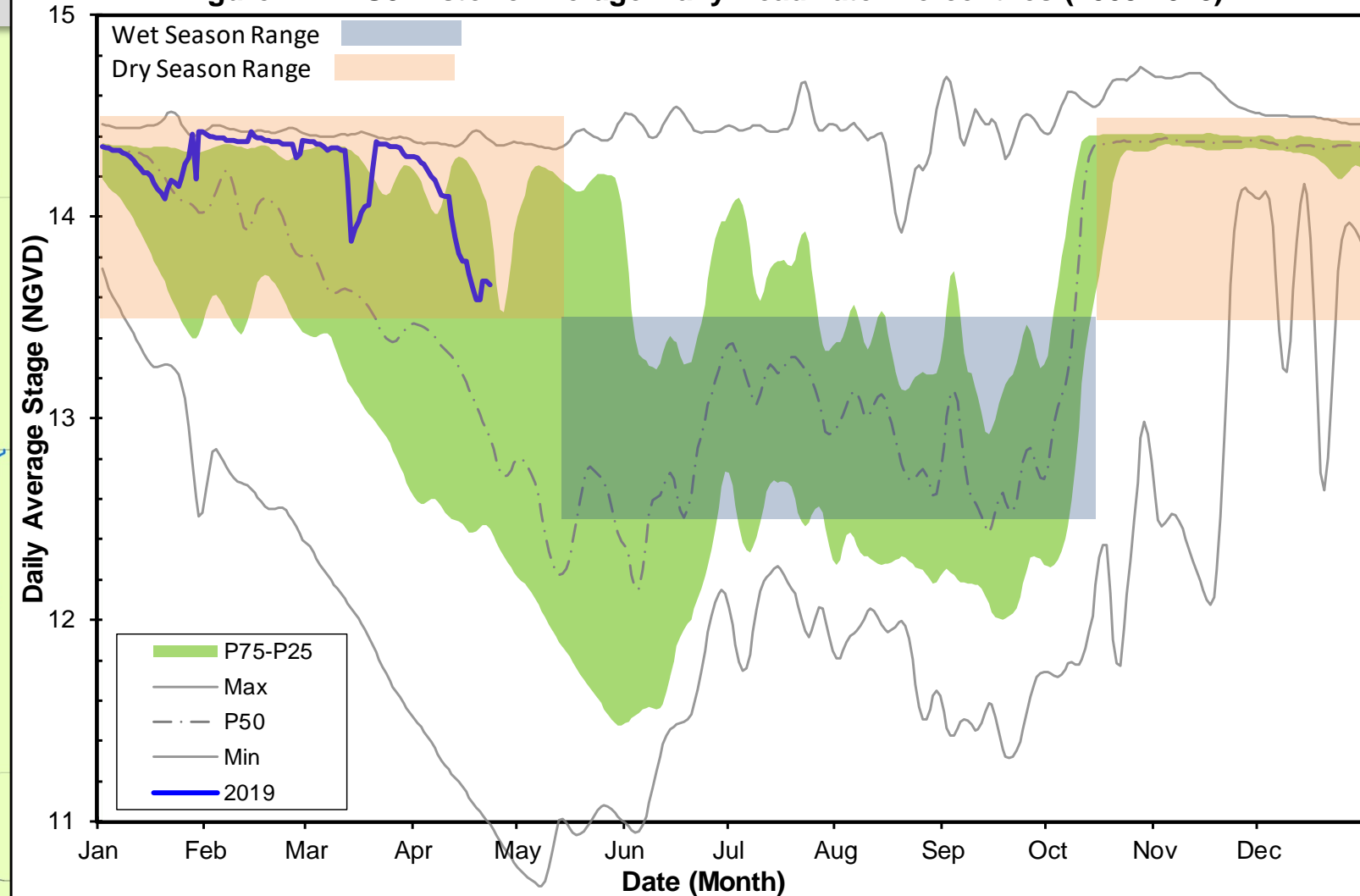


Figure 7B - FU5 Historic Average Daily Headwater Percentiles (2003-2018)



BCB Canal Levels ~ Daily Average Track

HENDERSON CREEK

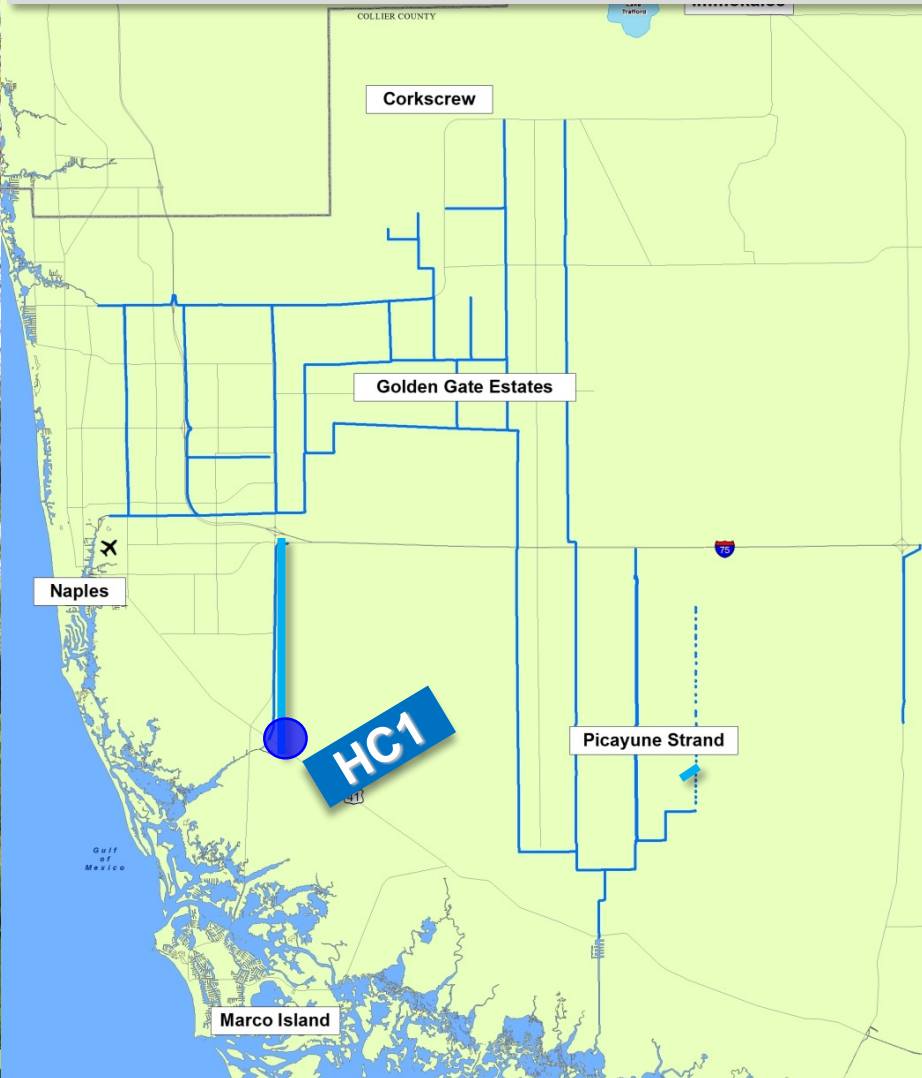
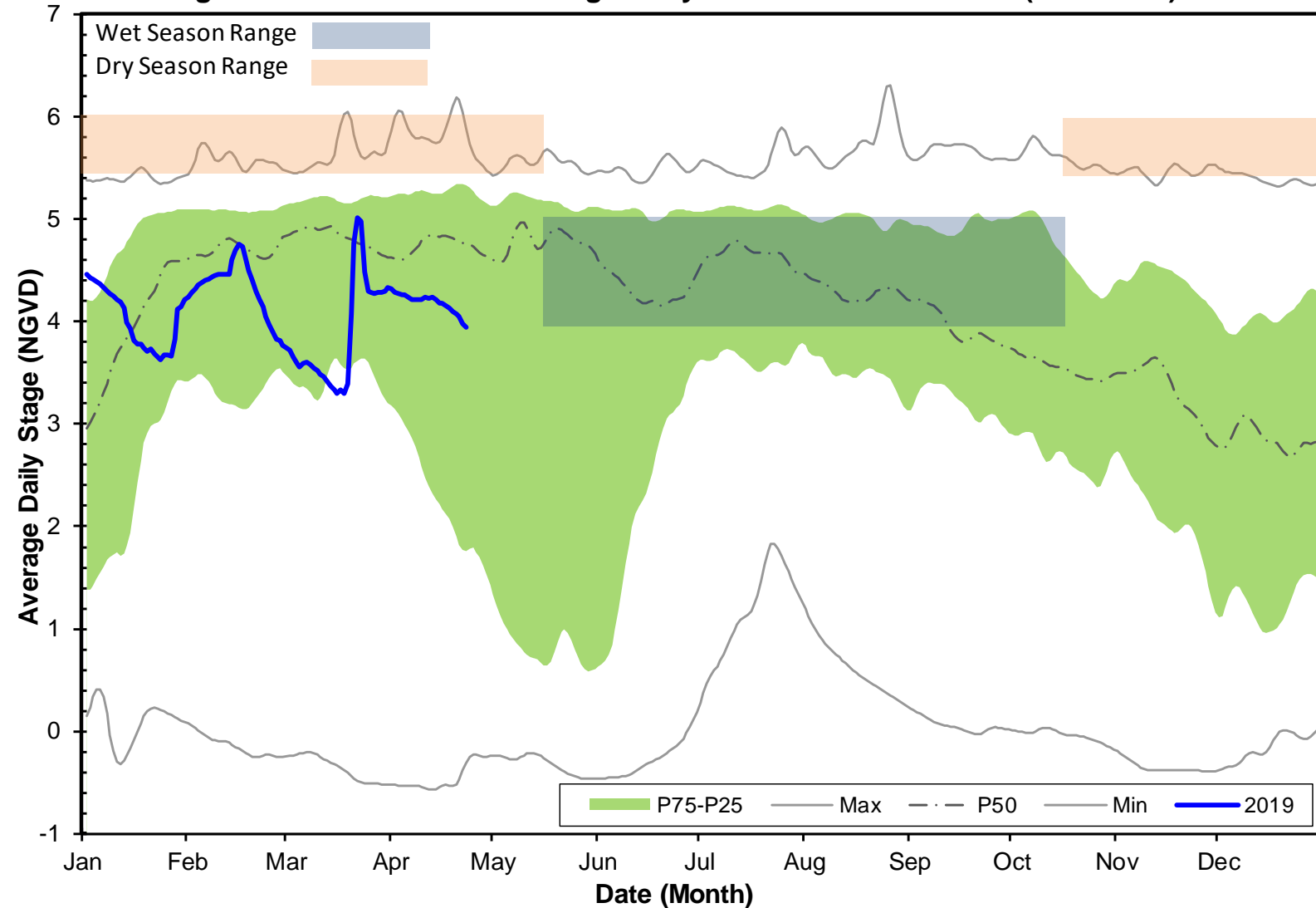


Figure 8A - HC1 Historic Average Daily Headwater Percentiles (1997-2018)



BCB Canal Levels ~ Daily Average Track

HENDERSON CREEK

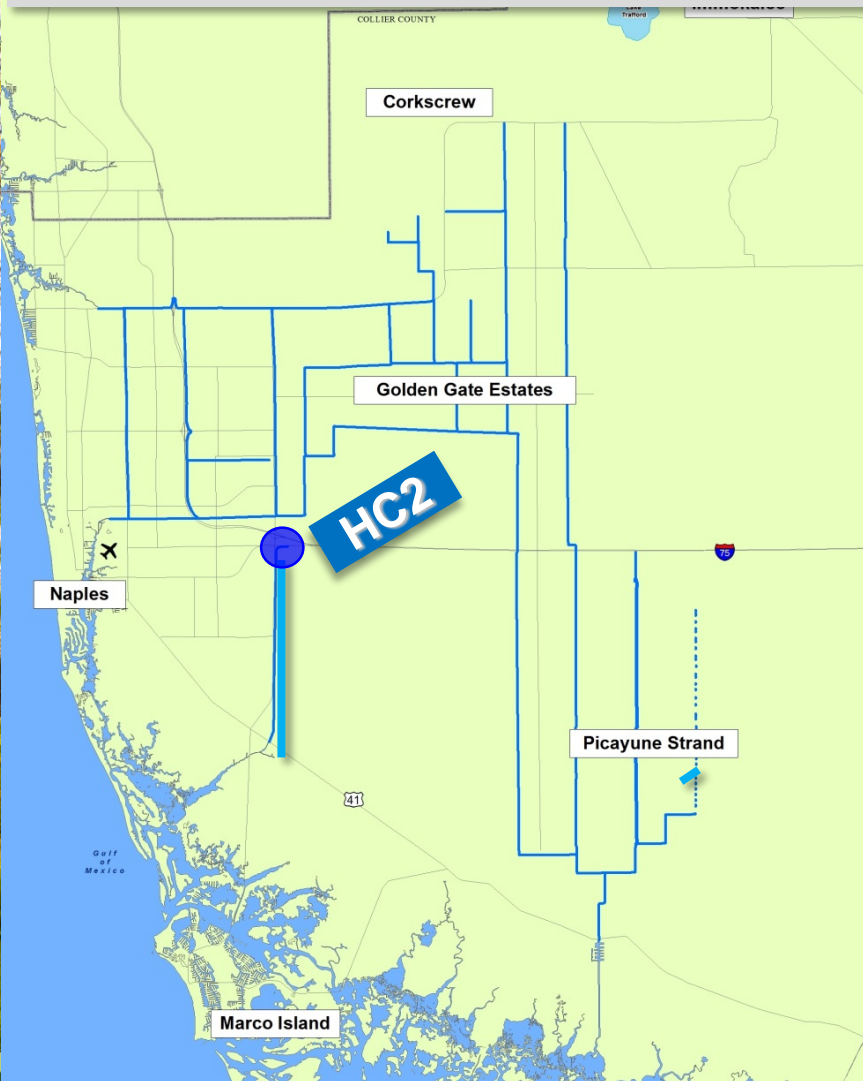
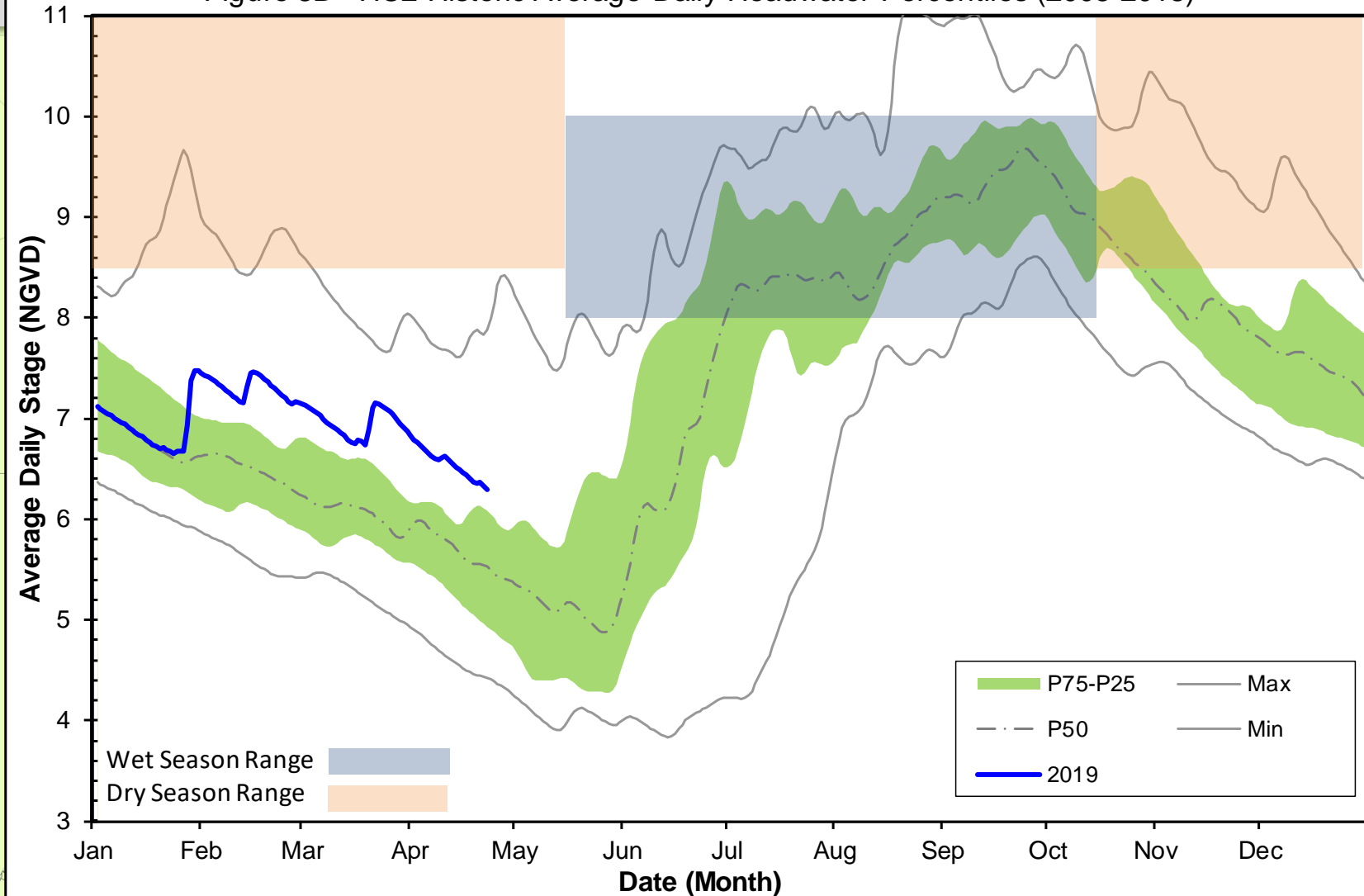
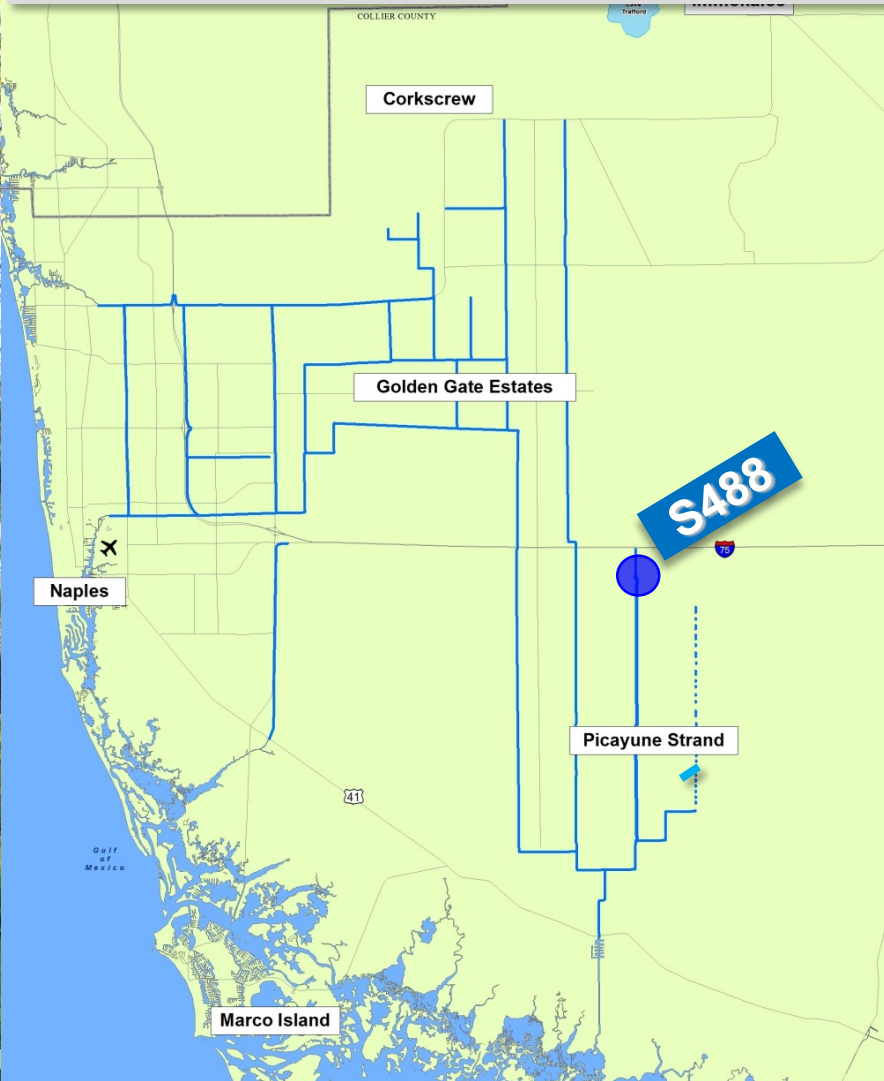


Figure 8B - HC2 Historic Average Daily Headwater Percentiles (2005-2018)

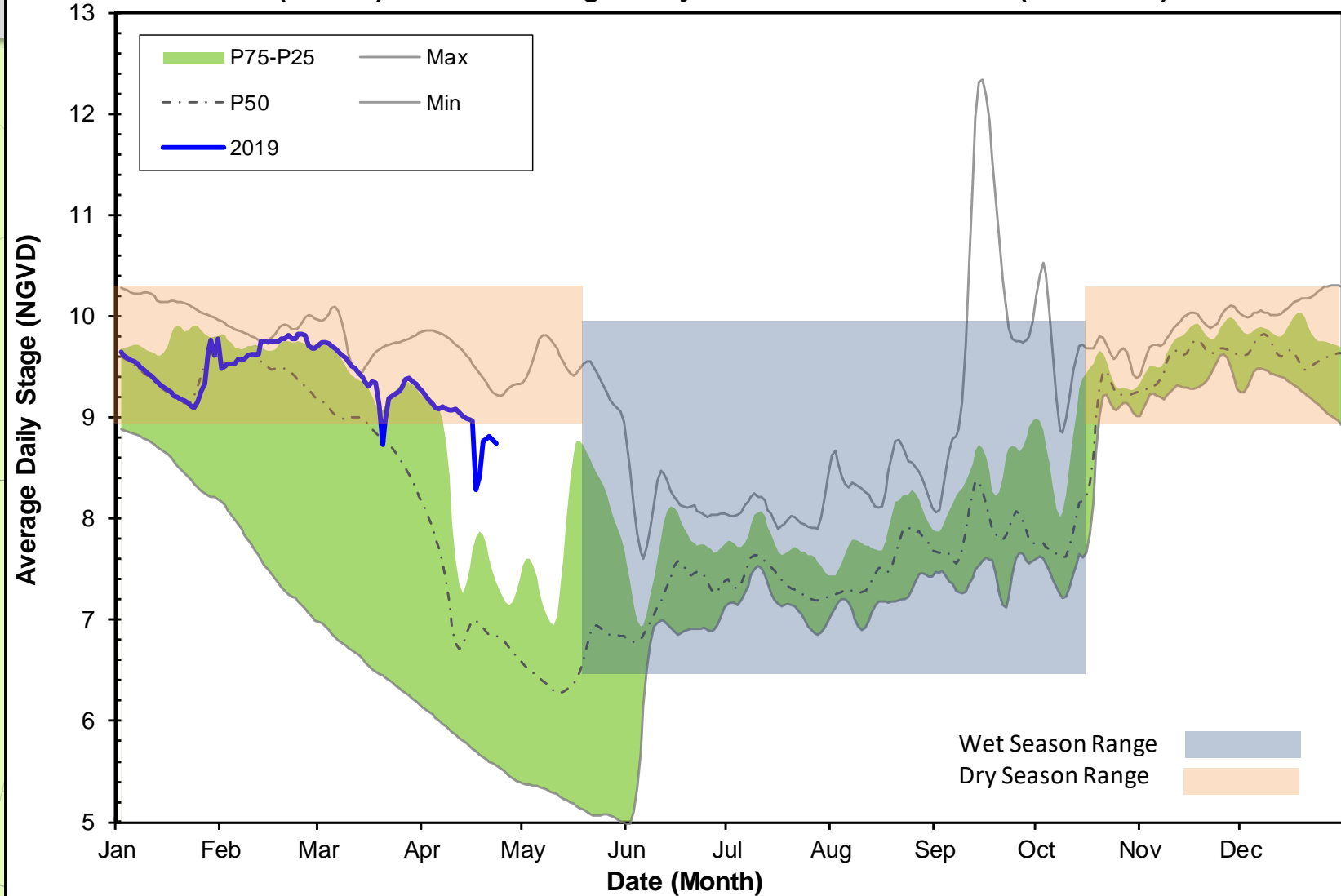


CERP PSRP Operations ~ Daily Average Flow/Stage

MERRITT PUMP STATION

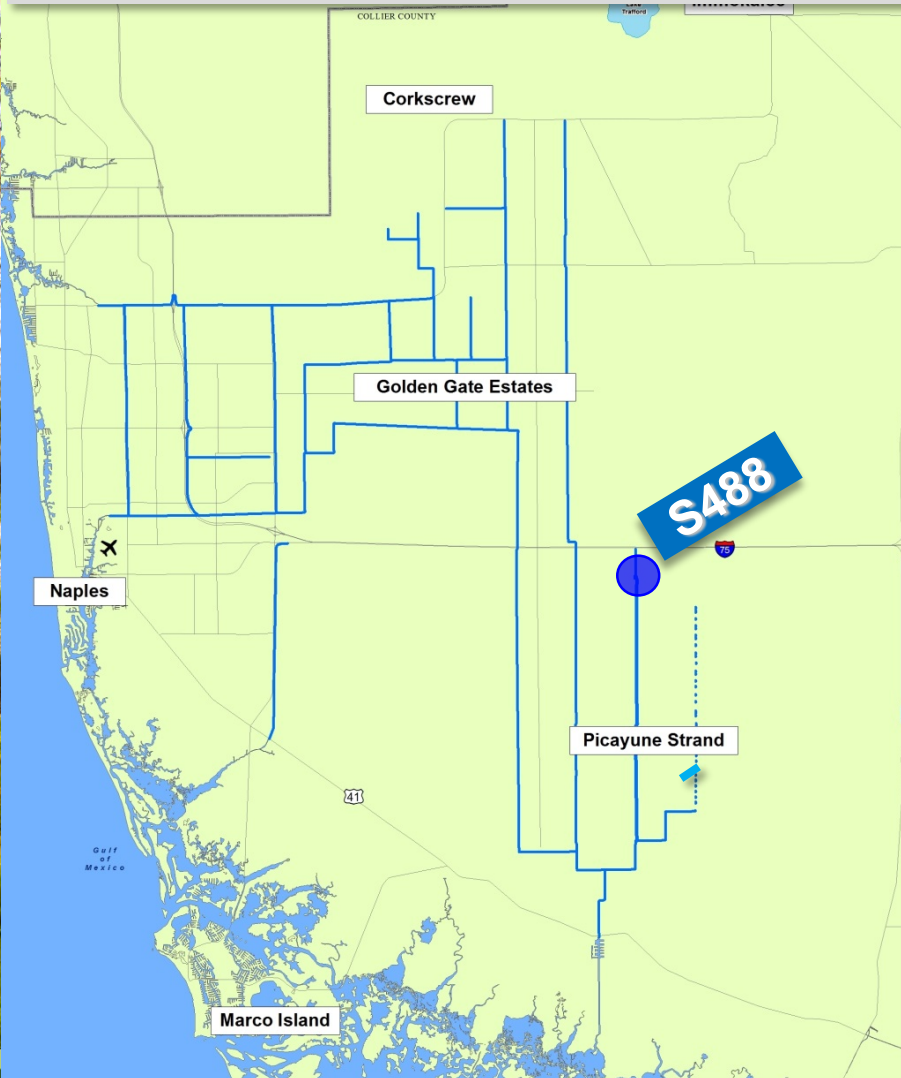


S488 (Merritt) Historic Average Daily Headwater Percentiles (2015-2019)

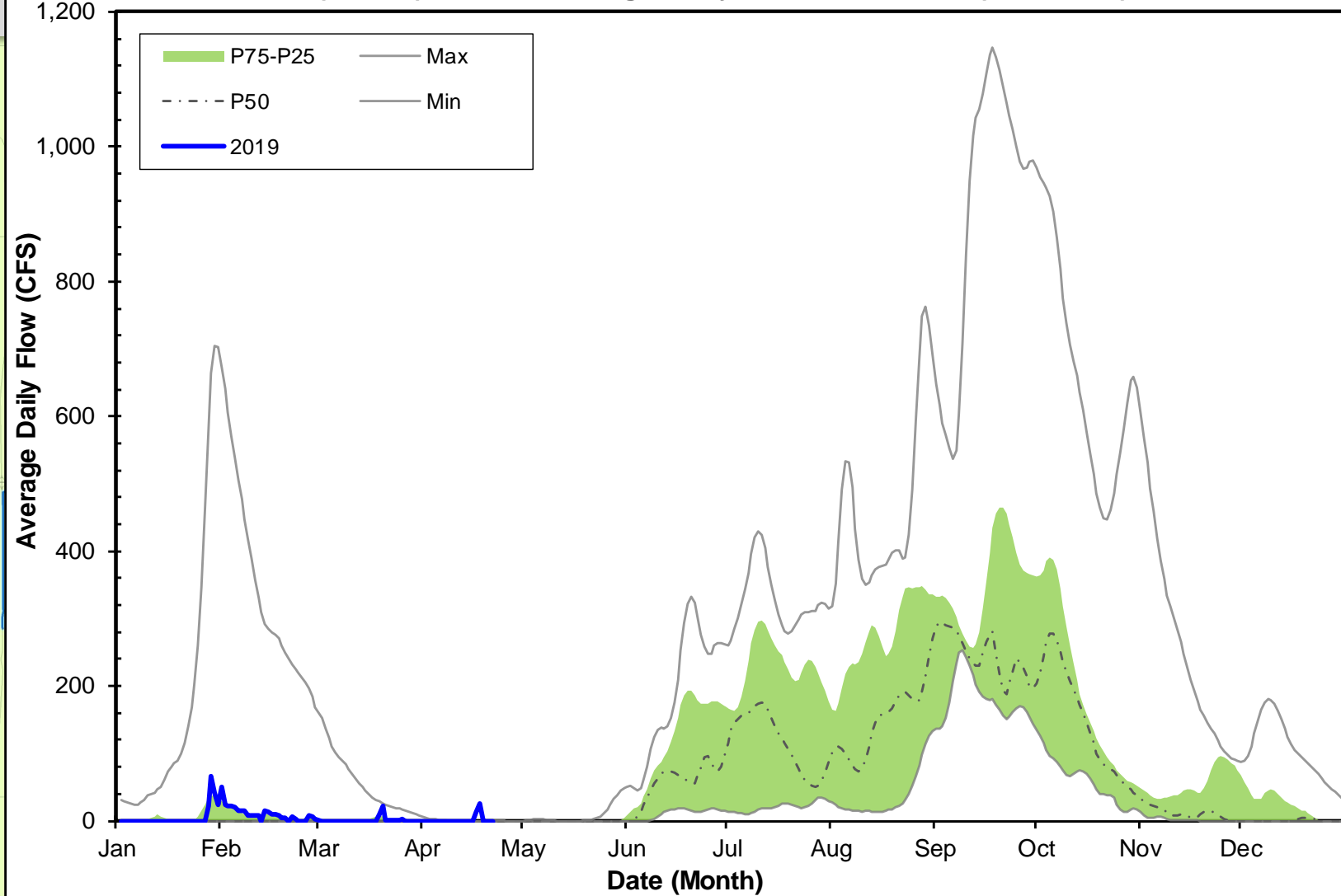


CERP PSRP Operations ~ Daily Average Flow/Stage

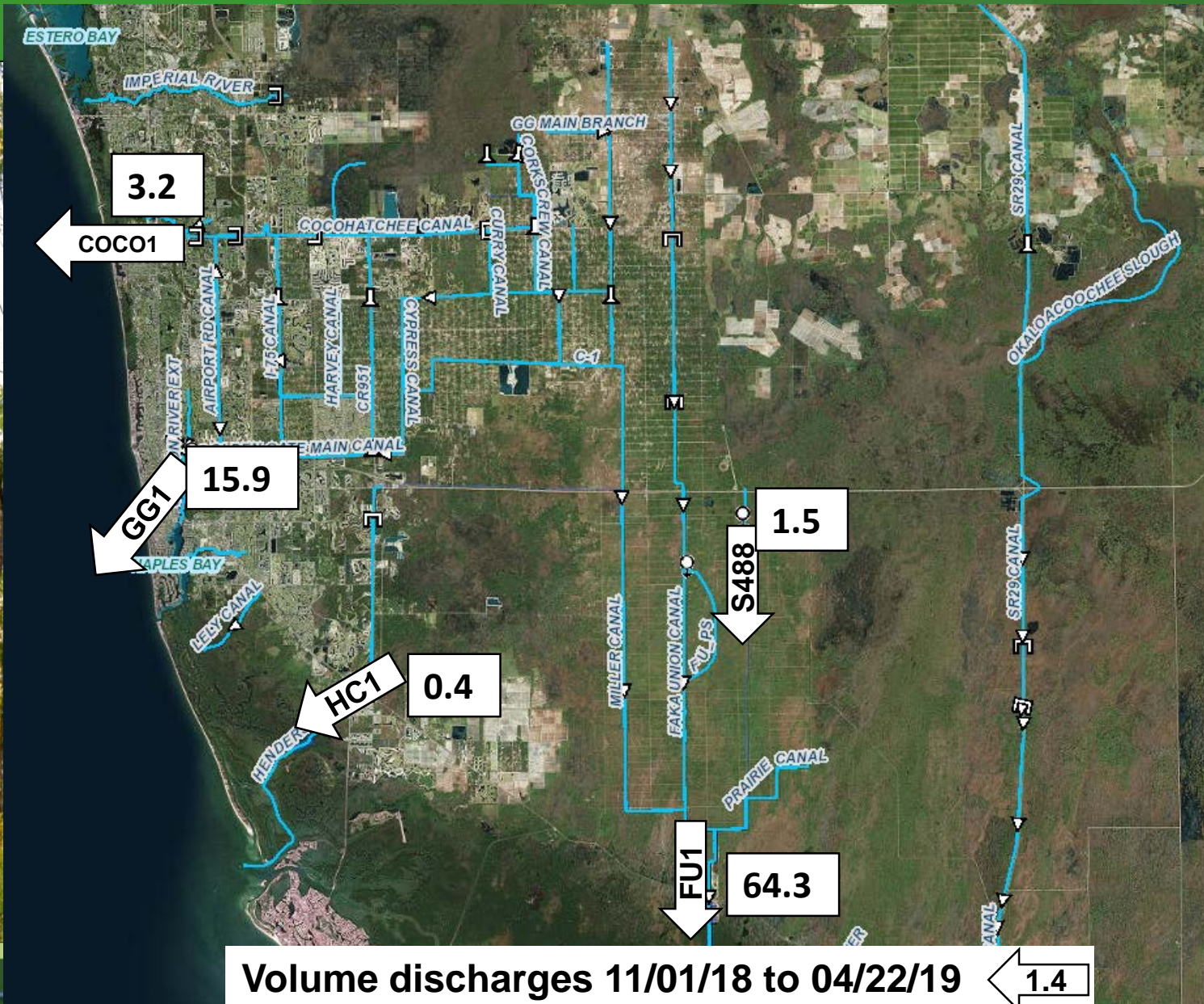
MERRITT PUMP STATION



S488 (Merritt) Historic Average Daily Flow Percentiles (2015-2019)



BCB Dry Season - Outflow Volumes



BCB – Dry Season - Release Volumes
Nov 1, 2018 to April 22, 2019
(volumes in 1,000 acre-feet)

BCB Water Conditions Report

QUESTIONS ?

