



# **Recreational Facility Updates**

## **Water Resources Analysis Coalition**

### **Recreational Issues Forum**

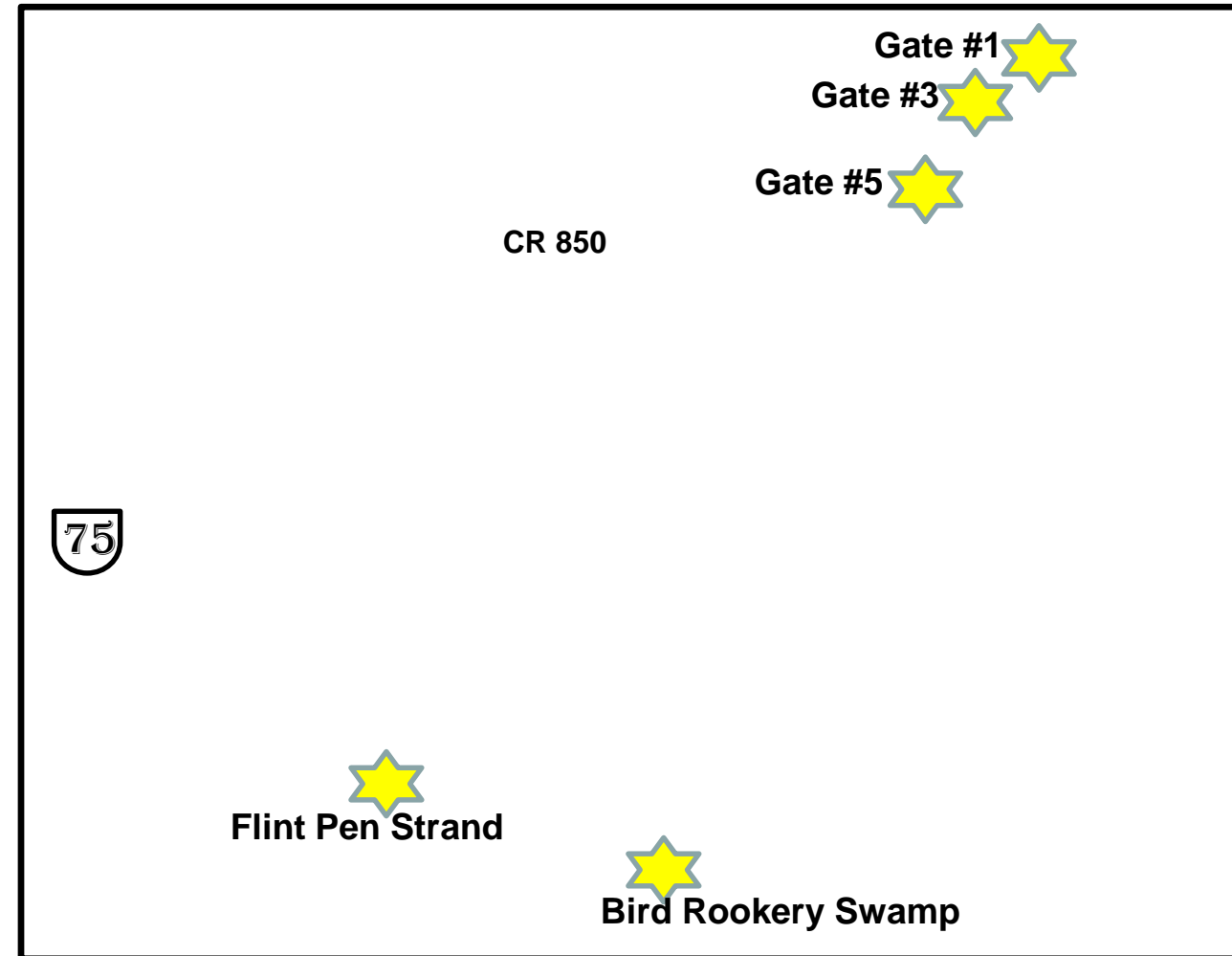
#### **December 17, 2018**

Dan Cotter  
SFWMD, Land Stewardship Section



## Recreational Facility Updates CREW Flint Pen Strand

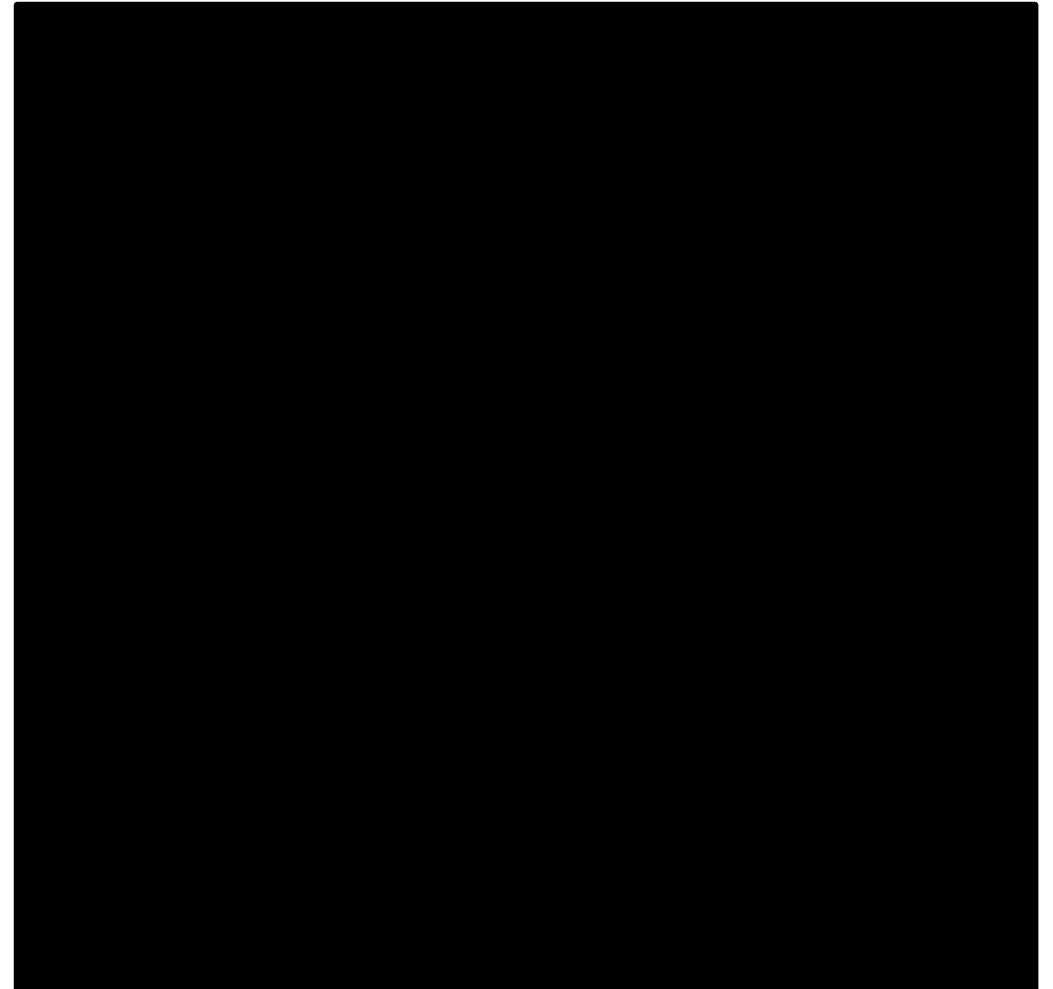
- CREW's Flint Pen Strand Unit is located within SW portion of the property in Lee County.
- Public uses in the area include: hiking, biking, hunting, horseback riding, fishing, and wildlife viewing.
- Partnerships for the area include FWC and CREW Land & Water Trust.





## Recreational Facility Updates CREW Flint Pen Strand

- Flint Pen Strand
  - Restoration has been completed and the entire area has re-opened for public use.
  - Vincent Rd. is primary access point into the area.







# Recreational Facility Updates CREW Flint Pen Strand

- Flint Pen Strand - new parking area.
- “Billy G. Cobb Memorial Trail” has been established.
  - Equestrian trail developed.
  - Ample parking for equestrian and ORV trailers, and school buses.
  - Allows for improved access to ORV hunting trails.



New Parking Area



New Trail







# Recreational Facility Updates CREW Flint Pen Strand

- Flint Pen Strand
  - Continue to expand hiking, biking, and equestrian trails.
  - Develop additional parking areas within the area for public use including hunting.
  - Thank you to volunteers who assisted with development of trails.







# Recreational Facility Updates CREW Flint Pen Strand

- Flint Pen Strand
  - Site dedication on November 30, 2018.
  - Opening of new parking area, trails, and the Billy G. Cobb Memorial trail.





## Recreational Facility Updates Nubbin Slough STA

- Nubbin Slough STA, located in Okeechobee County, property approx. 1,500 acres (STA is approx. 850 acres).
- Propose GB approval to designate as an STA for public use.
- Allow for public use (hiking, biking, wildlife viewing), daylight hours Fri.-Mon.
- Review future hunting potential.



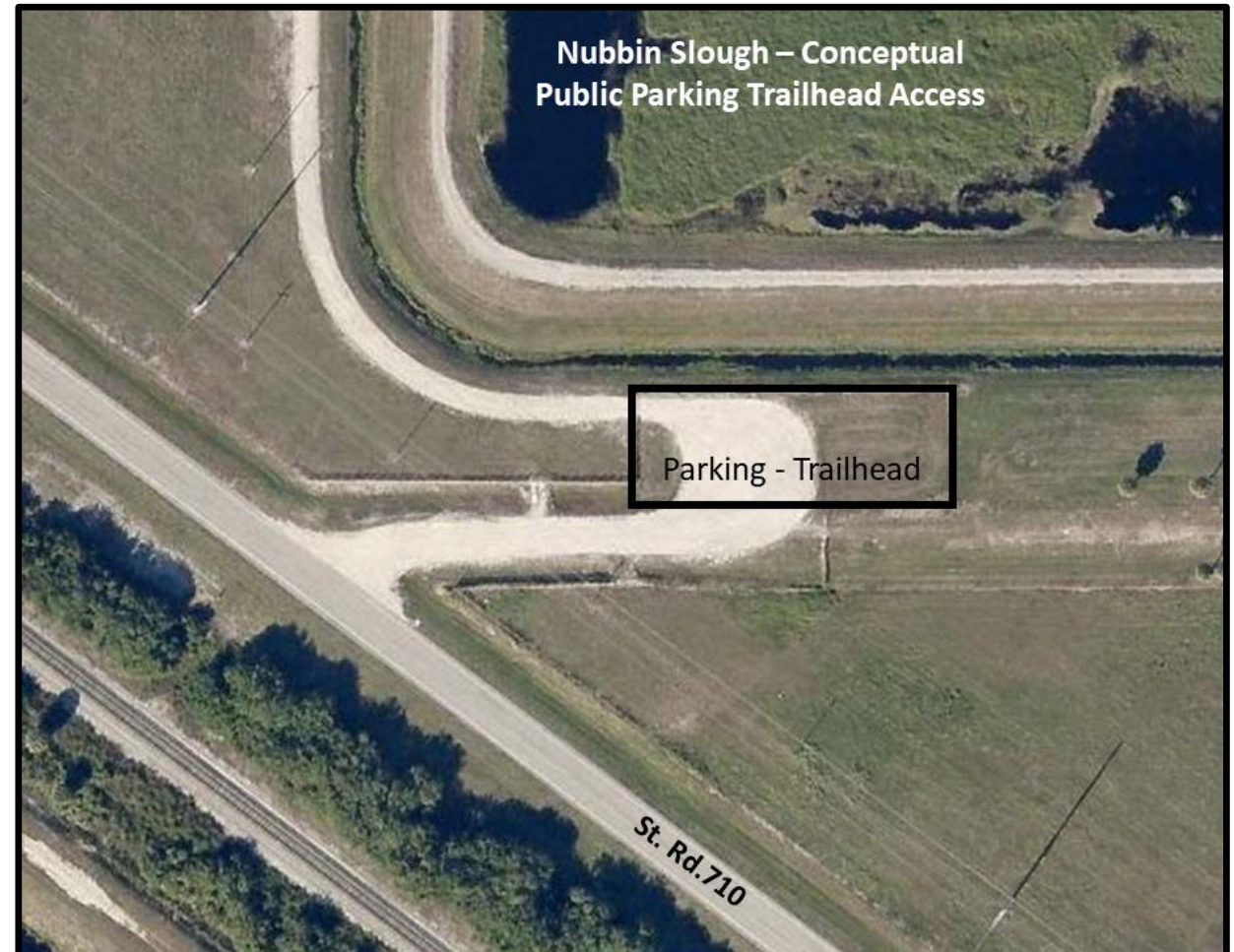
← Future Parking Area





## Recreational Facility Updates Nubbin Slough STA

- Develop parking area off St. Rd. 710.
- Include kiosk and appropriate signage.
- Potentially construct berm / ramp directly from parking area to levee in the future.







## Recreational Facility Updates S-46 Fishing Piers

- Recently District and Town of Jupiter executed an MOU to partner on the management and maintenance of future public use facilities at the S-46.
- District plans to develop new parking area this fiscal year.





**Thank You**  
**Questions?**