



South Florida Fire Conditions Report

Gene Colwell

Land Resources Scientist
Land Management Section
June 18th , 2018

Why Does SFWMD Burn?

- Ecological integrity
- Control woody vegetation
- Fuel reduction
- Exotic plant control
- Protect Listed species
- Site prep & maintenance
- Land clearing
- Wetlands management



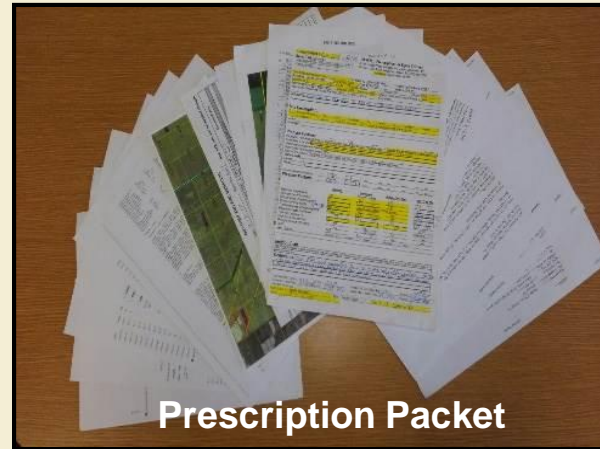
Pine Flatwoods 2003



Pine Flatwoods 2009

Certified Prescribed Burn Process

- Prescription
 - Site description
 - Required resources
 - Weather parameters
 - Desired effects
 - Safety
 - Smoke management
- Publicity & coordination
- Fire line preparation
- Secure Forestry authorization
- Ignition pattern
- Mop-up



SFWMD Burn Equipment

- Protective gear
- Radios
- Drip torches
- Flame throwers
- Fire tools
- Pumper trucks
- Brush trucks
- Swamp Buggies
- Airboats
- Tractor/disk for firebreaks
- Front-end loaders for felling dead trees
- ATV's/Argos/side by sides with water and fire



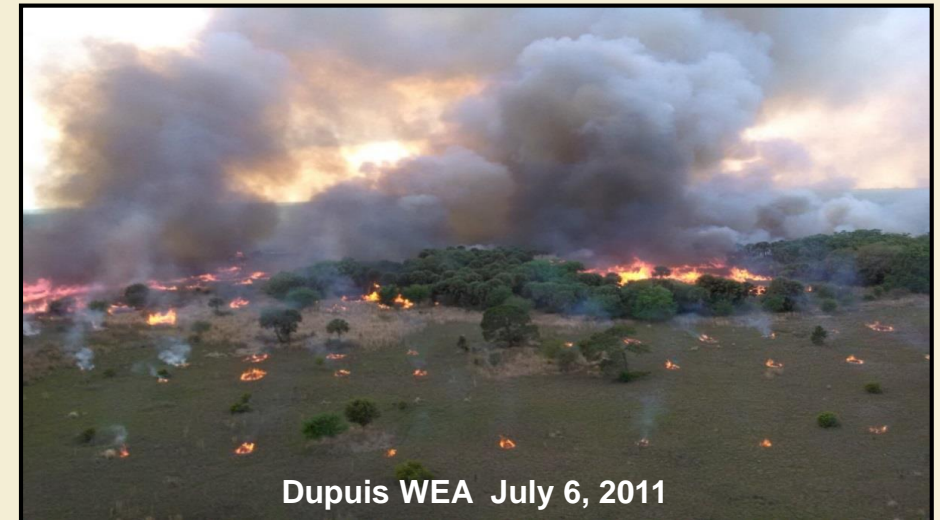
Aerial Ignition Techniques



Jim Schuette with Aerial Ignition Device



Potassium permanganate balls



Dupuis WEA July 6, 2011

Your SFWMD Burn Team

- 18 Certified Burners in Land Stewardship
- Responsible for wildlands fire throughout District
- 16,000 acres, 55 prescribed burns annually
- 4-10 crew members/prescribed burn
- When conditions are right, we all burn
- Get assistance from other sections, field stations, state & federal governments, non-profit organizations, contractors, and volunteers



Chandler Slough January 23, 2013



Grassy Island, November 3, 2015



Lake Marion Creek July 8, 2015

SFWMD Fire Program Statistics

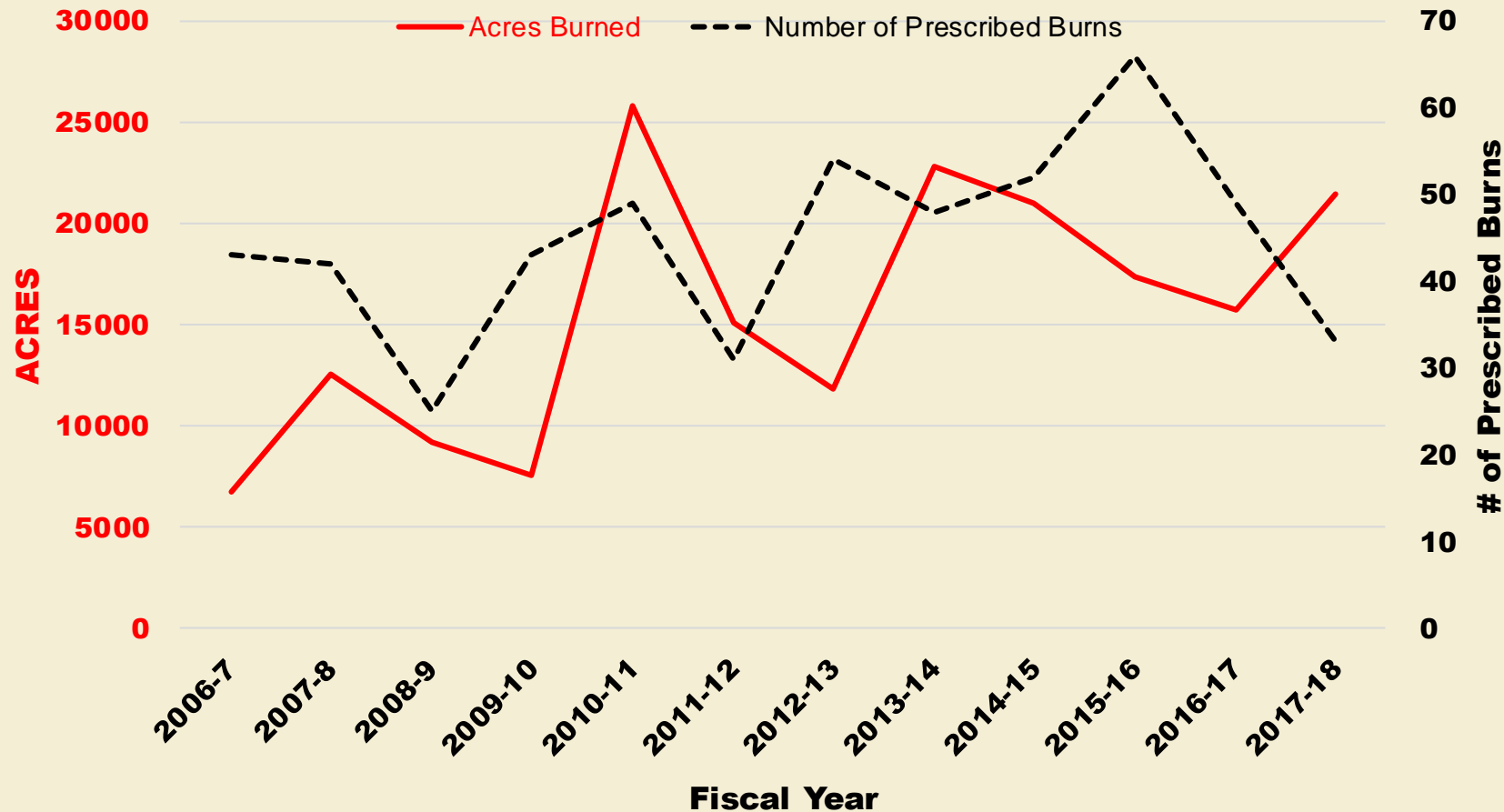
Fiscal Year	Acres Burned	Number of Fires	Acres per Fire (average)
2012-13	11,757	54	218
2013-14	22,778	48	475
2014-15	20,974	52	403
2015-16	17,363	66	263
2016-17	15,719	49	321
5-Year Average	17,718	54	336
Current	21,423	33	649



Dupuis WEA May 19, 2015

SFWMD Burn Activity

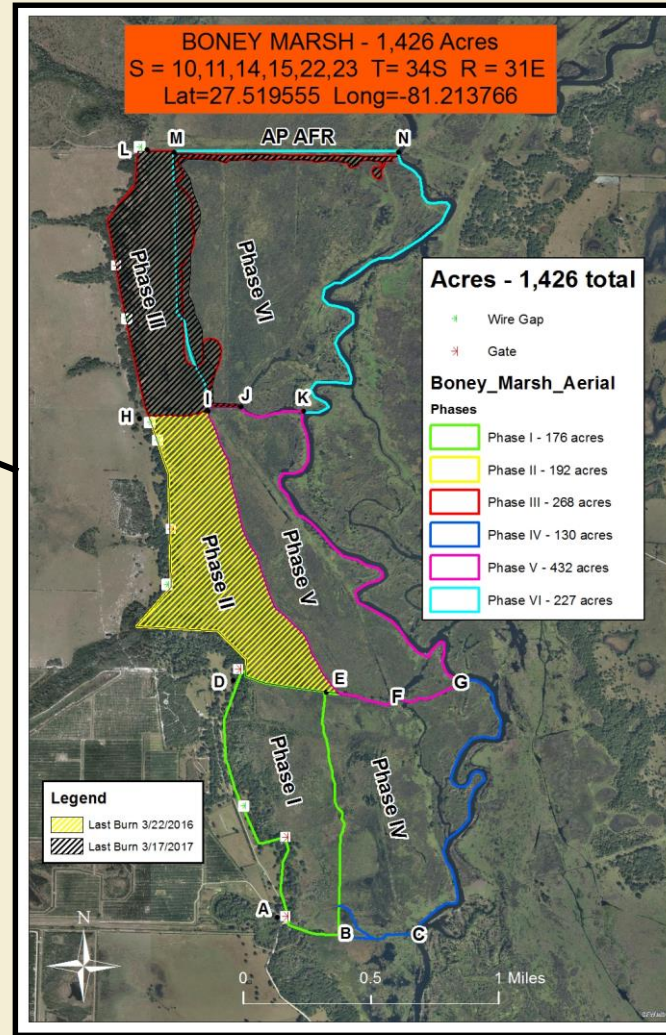
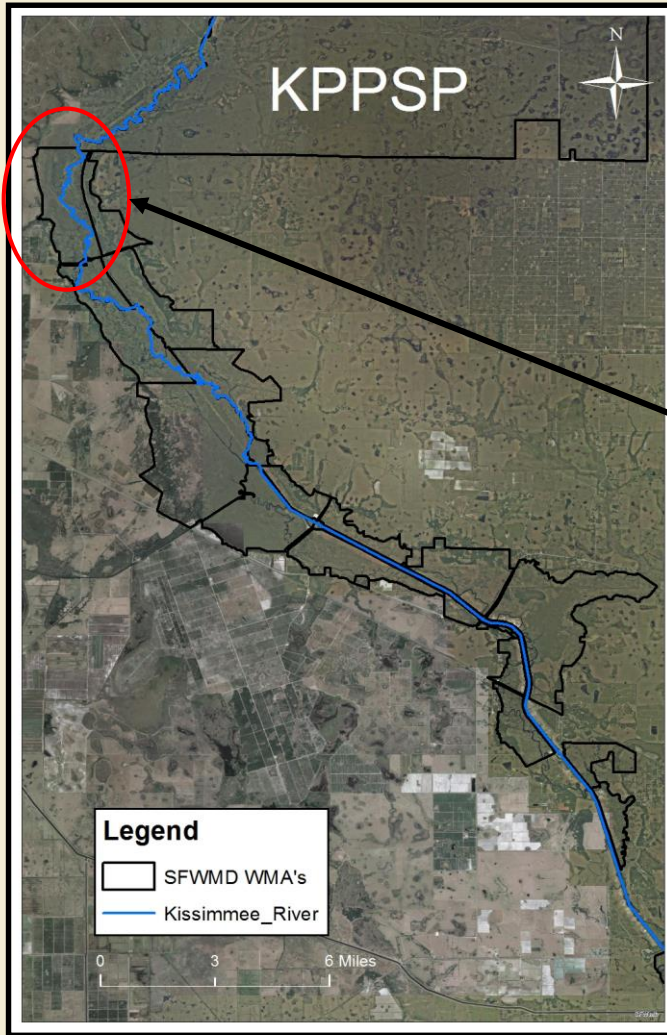
SFWMD Prescribed Fire History



KICCO April 20, 2018



Prescribed Burning on the Kissimmee River



Challenges

- Private Property
- Access
- Weather
- Resources
- Construction Activities

Prescribed Fire on Lake Okeechobee

- FFS, SFWMD, FWC, USACE
 - Obtaining authorization
 - Staffing & equipment resources
 - ID resources at risk
 - Coordinate with USFWS on listed species
 - Disk levee, firebreaks
 - Coordinate/operate aerial ignitions

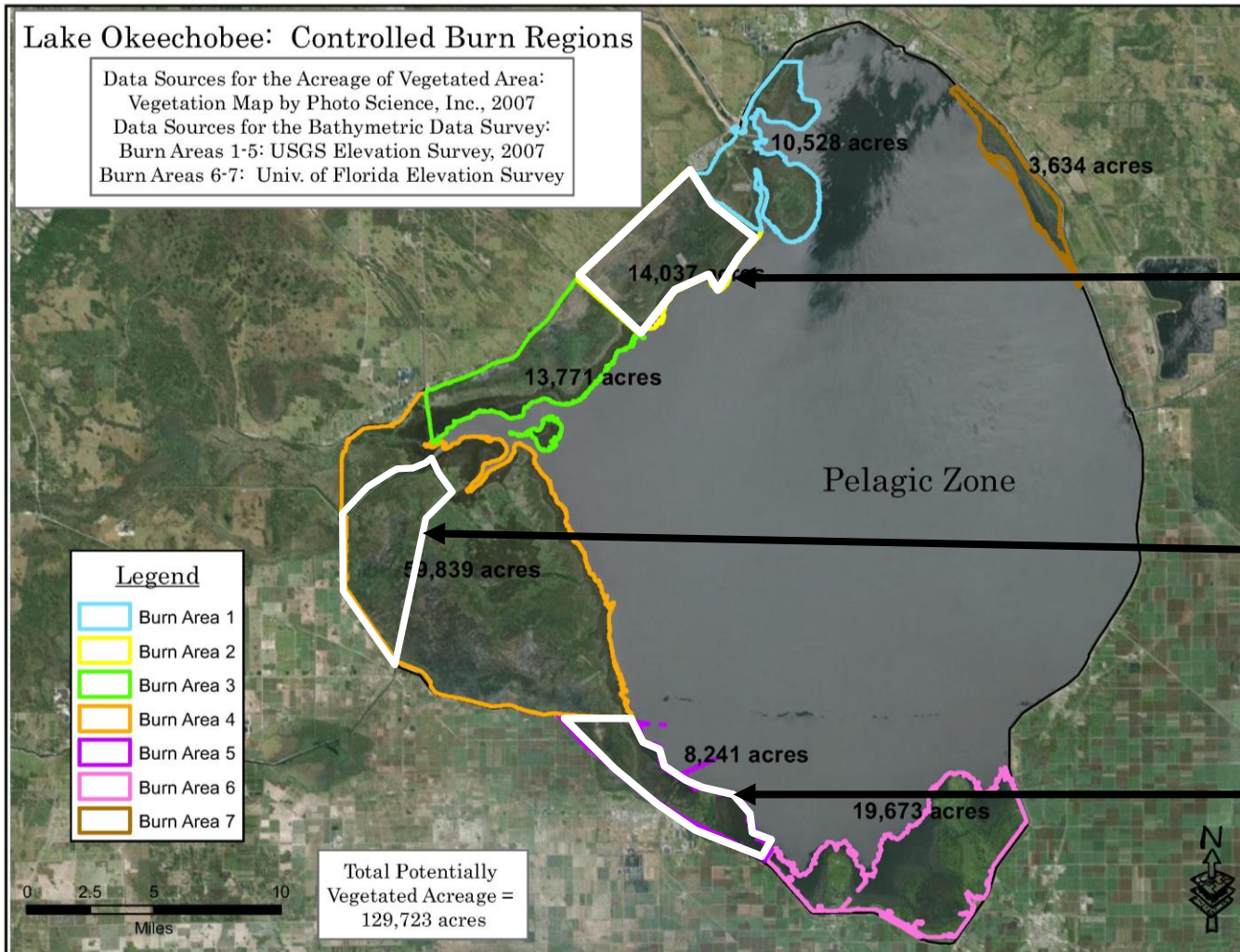


Lake Okeechobee Inter-agency Burn Team

Prescribed Fire on Lake Okeechobee

Lake Okeechobee: Controlled Burn Regions

Data Sources for the Acreage of Vegetated Area:
Vegetation Map by Photo Science, Inc., 2007
Data Sources for the Bathymetric Data Survey:
Burn Areas 1-5: USGS Elevation Survey, 2007
Burn Areas 6-7: Univ. of Florida Elevation Survey



Indian Prairie
~780 Acres
Burned
March 2, 2018

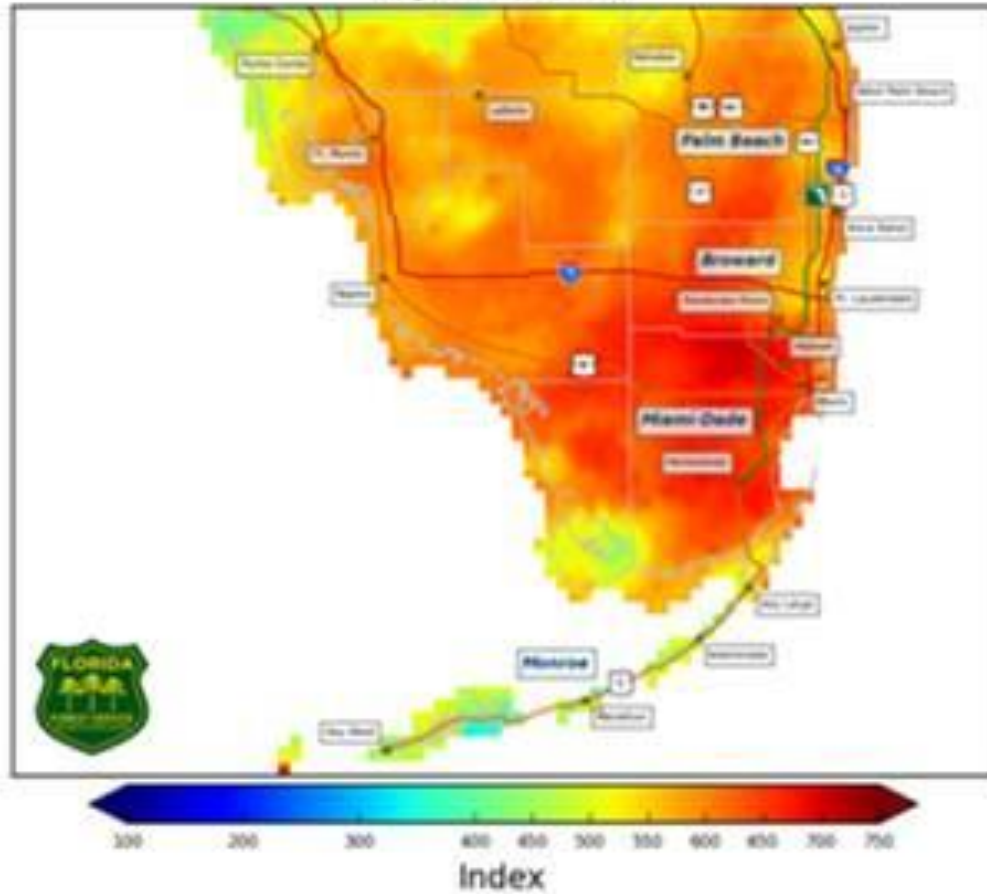
Sportsmen's Cut
~ 3820 Acres
Burned
April 4, 2018

~ 450 Acres
Burned
June 6, 2018

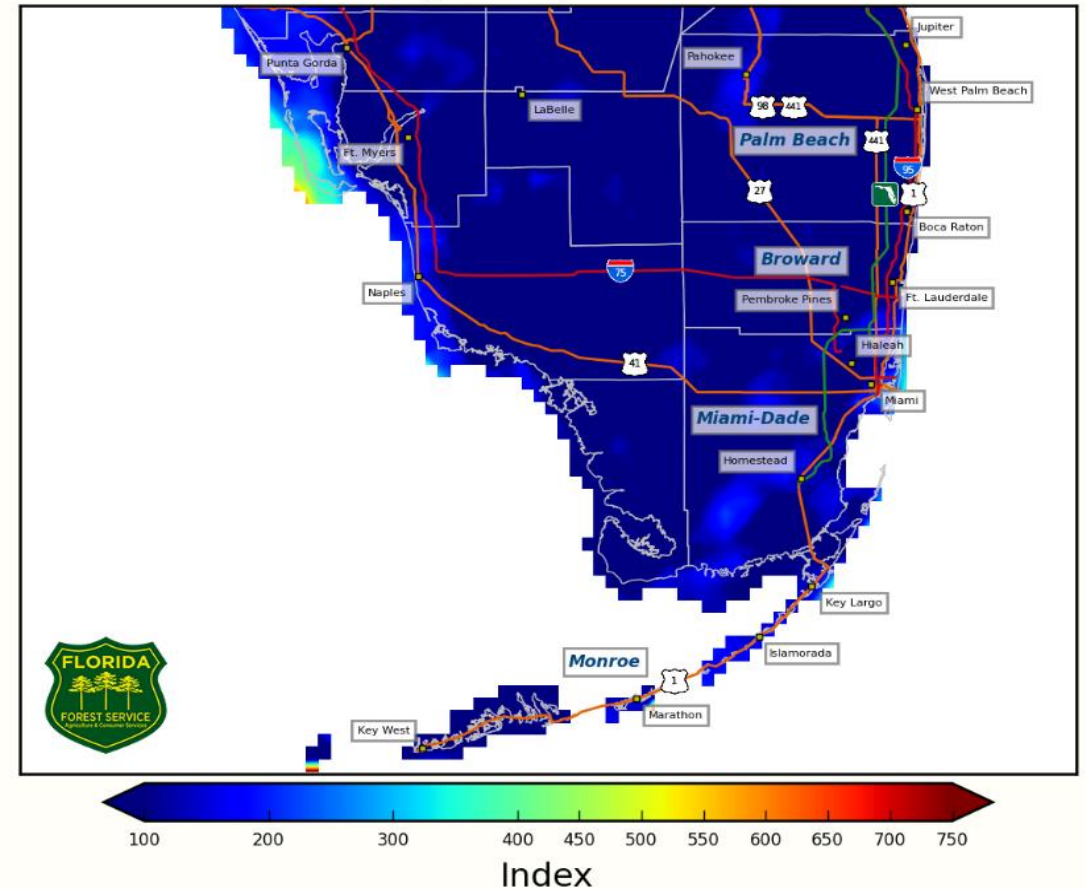


Changes in Weather

4 km Resolution KBDI
Everglades District
April 03, 2018

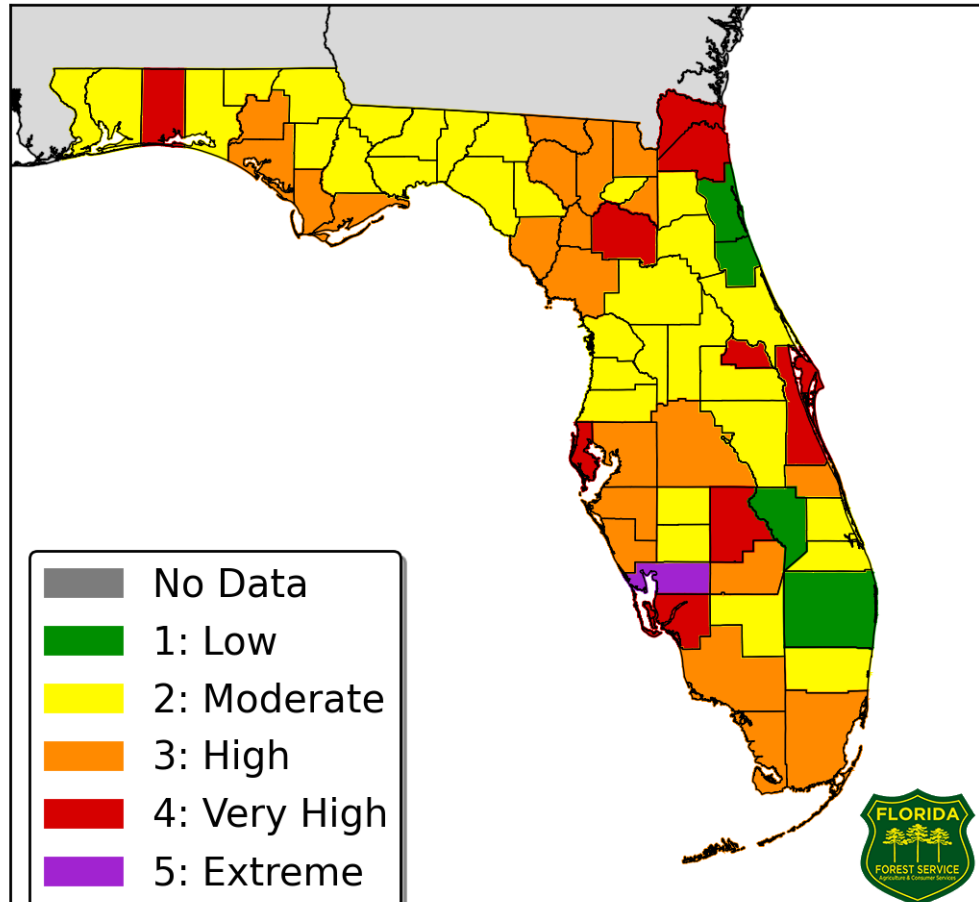


4 km Resolution KBDI
Everglades District
June 11, 2018

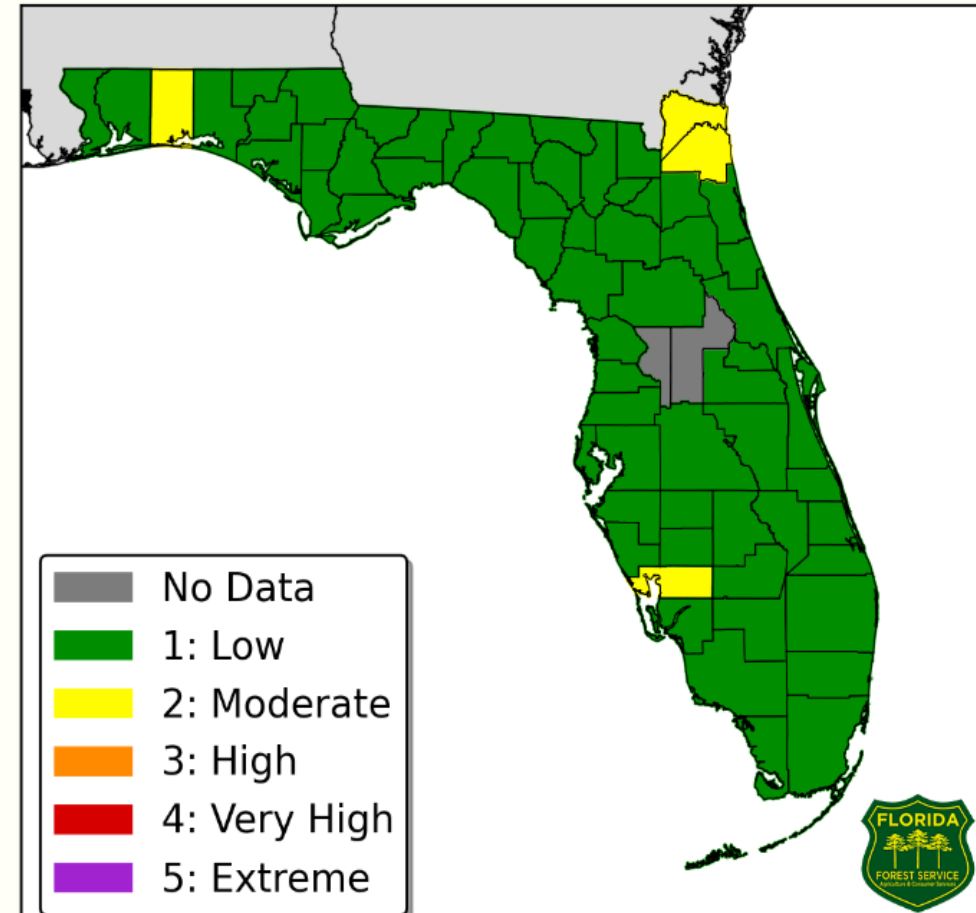


Changes in Weather

Observed Fire Danger Indices
April 29, 2018

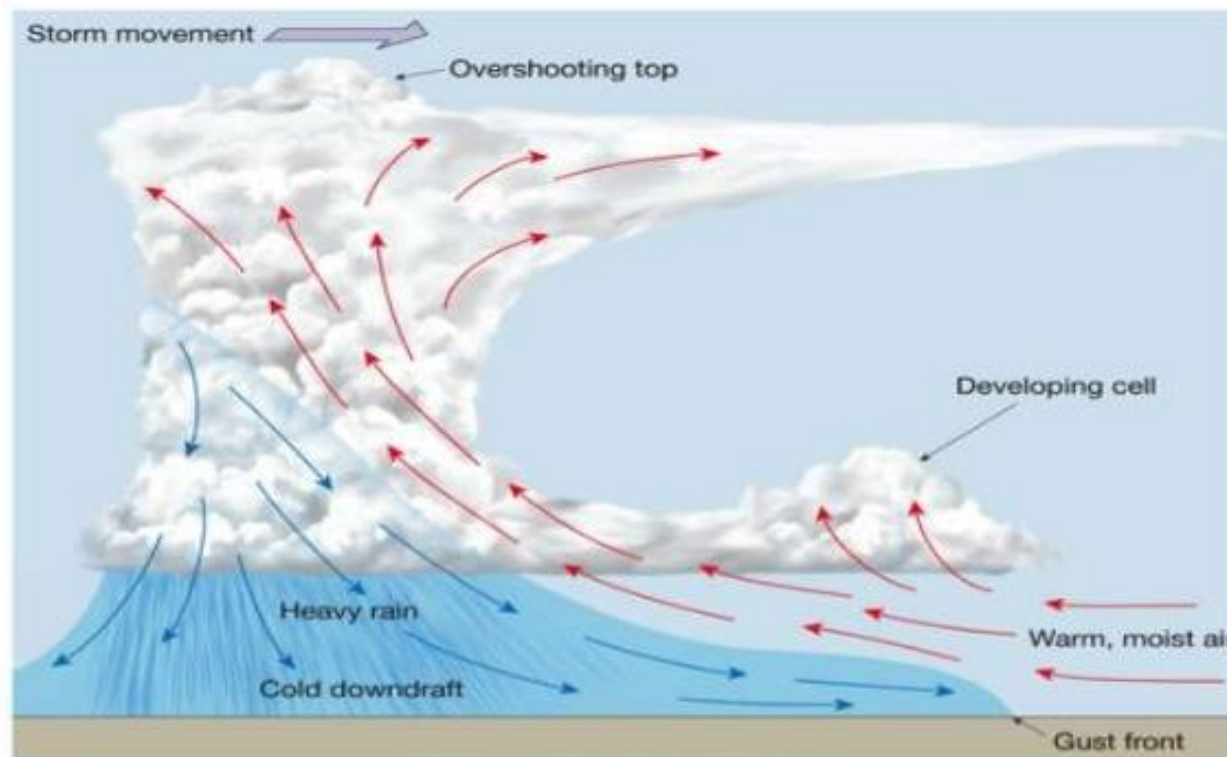


Observed Fire Danger Indices
June 10, 2018



Changes in Weather

Severe Thunderstorms



Copyright © 2010 Pearson Prentice Hall, Inc.

Questions?

Lake Okeechobee March 19, 2018



Lake Okeechobee April 4, 2018

