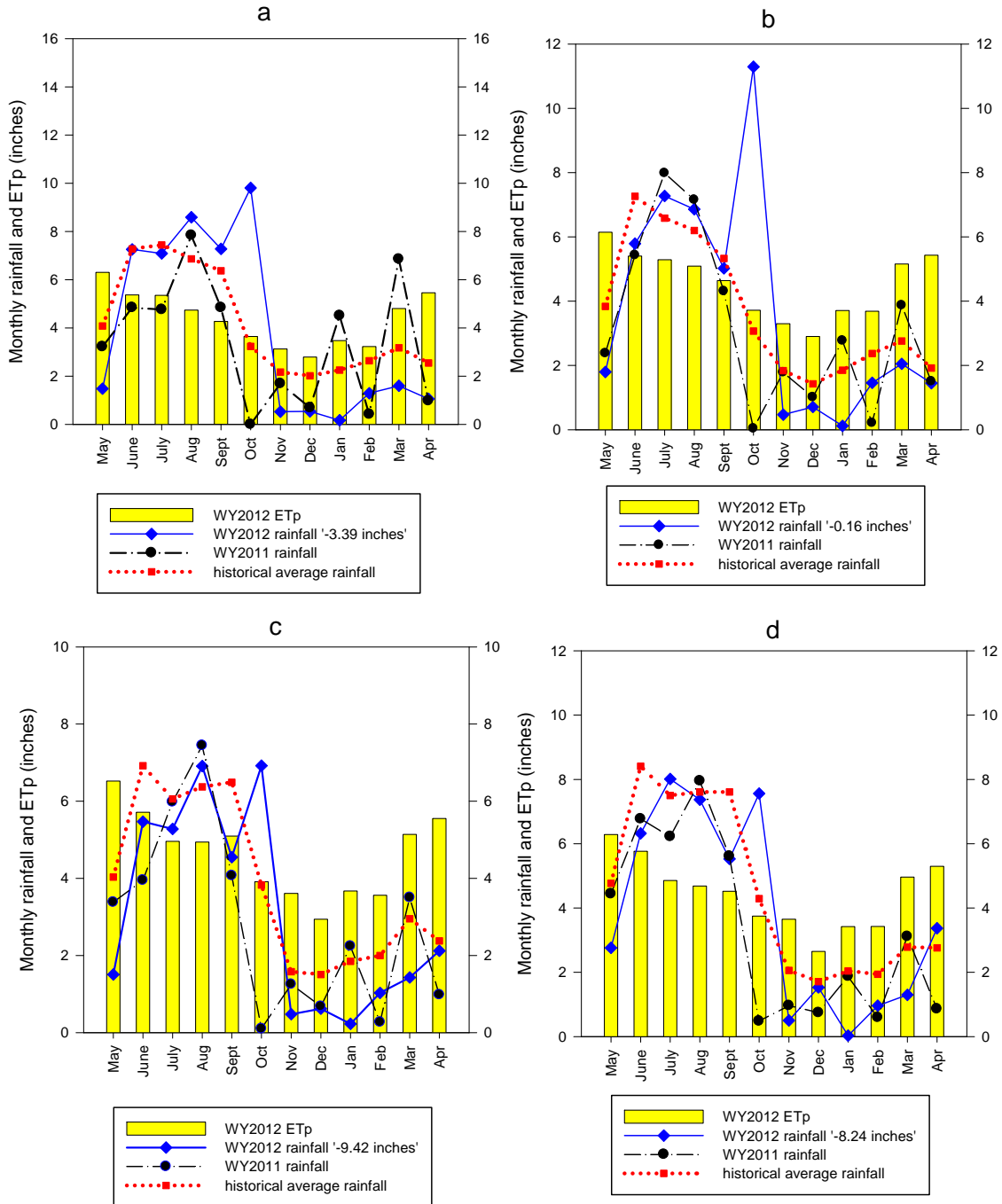
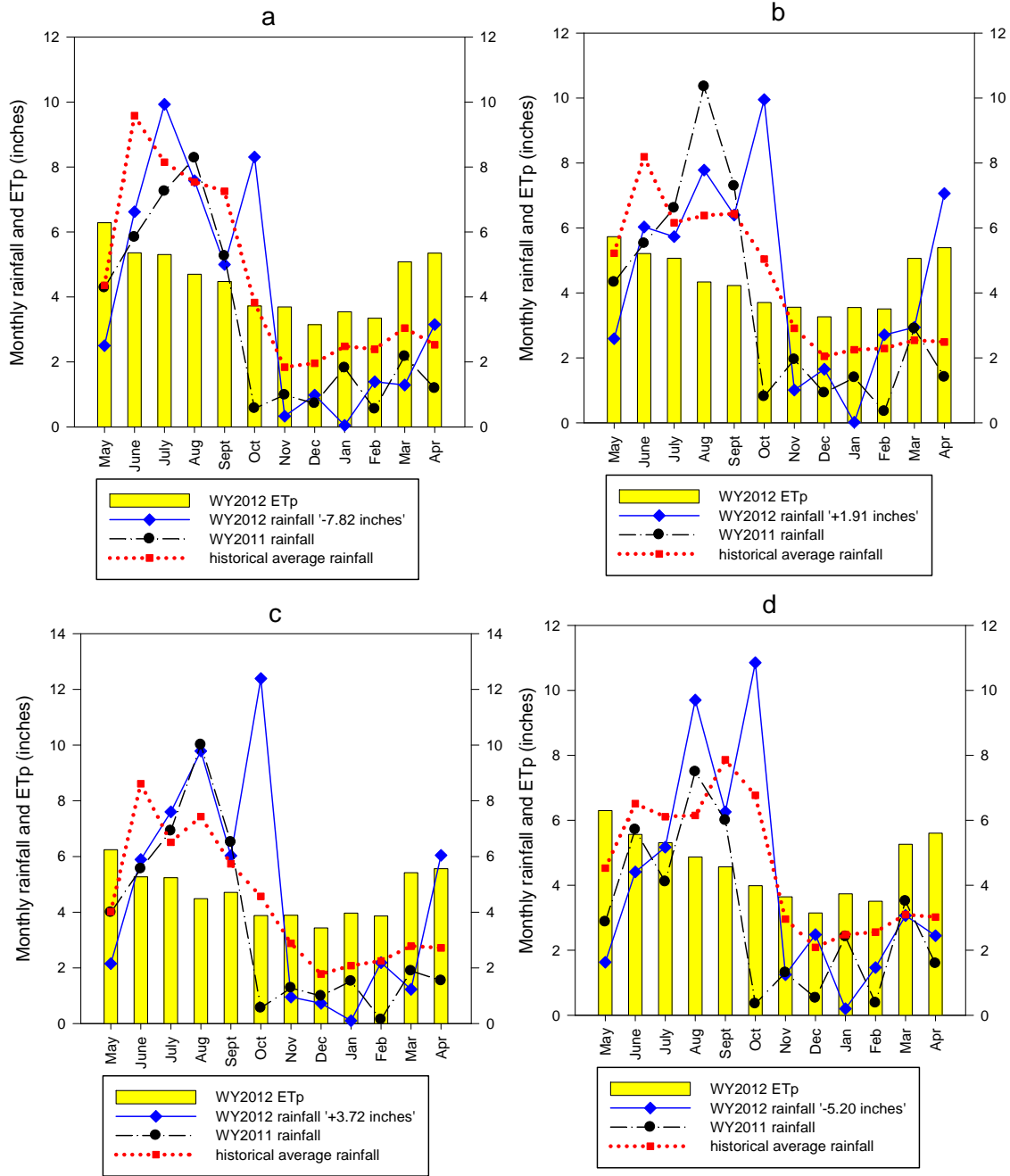


# **Appendix 2-2: Water Year 2011 and 2012 Monthly Rainfall, Historical Average Rainfall and Water Year 2012 Potential Evapotranspiration**

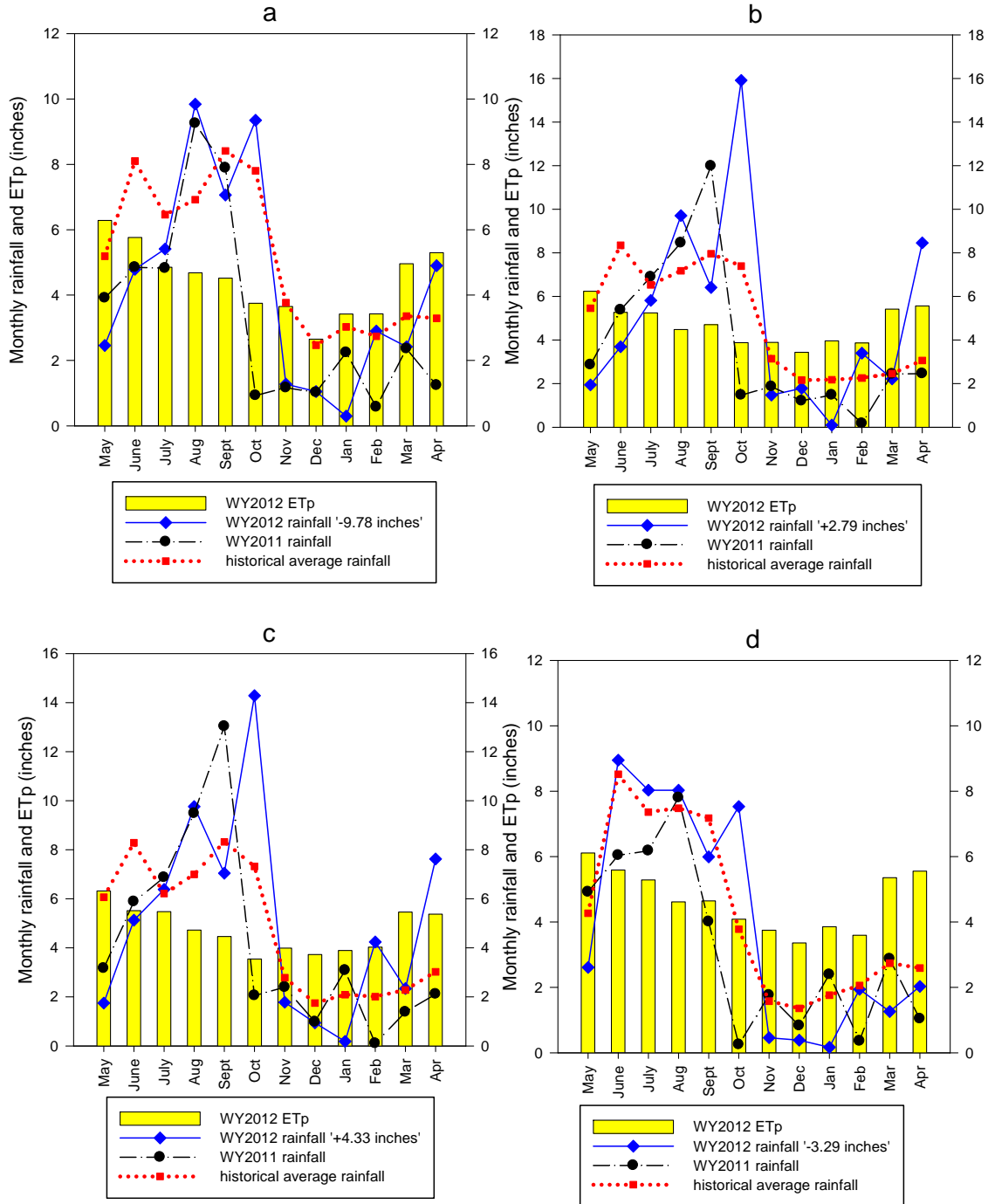
Wossenu Abtew and Violeta Ciuca



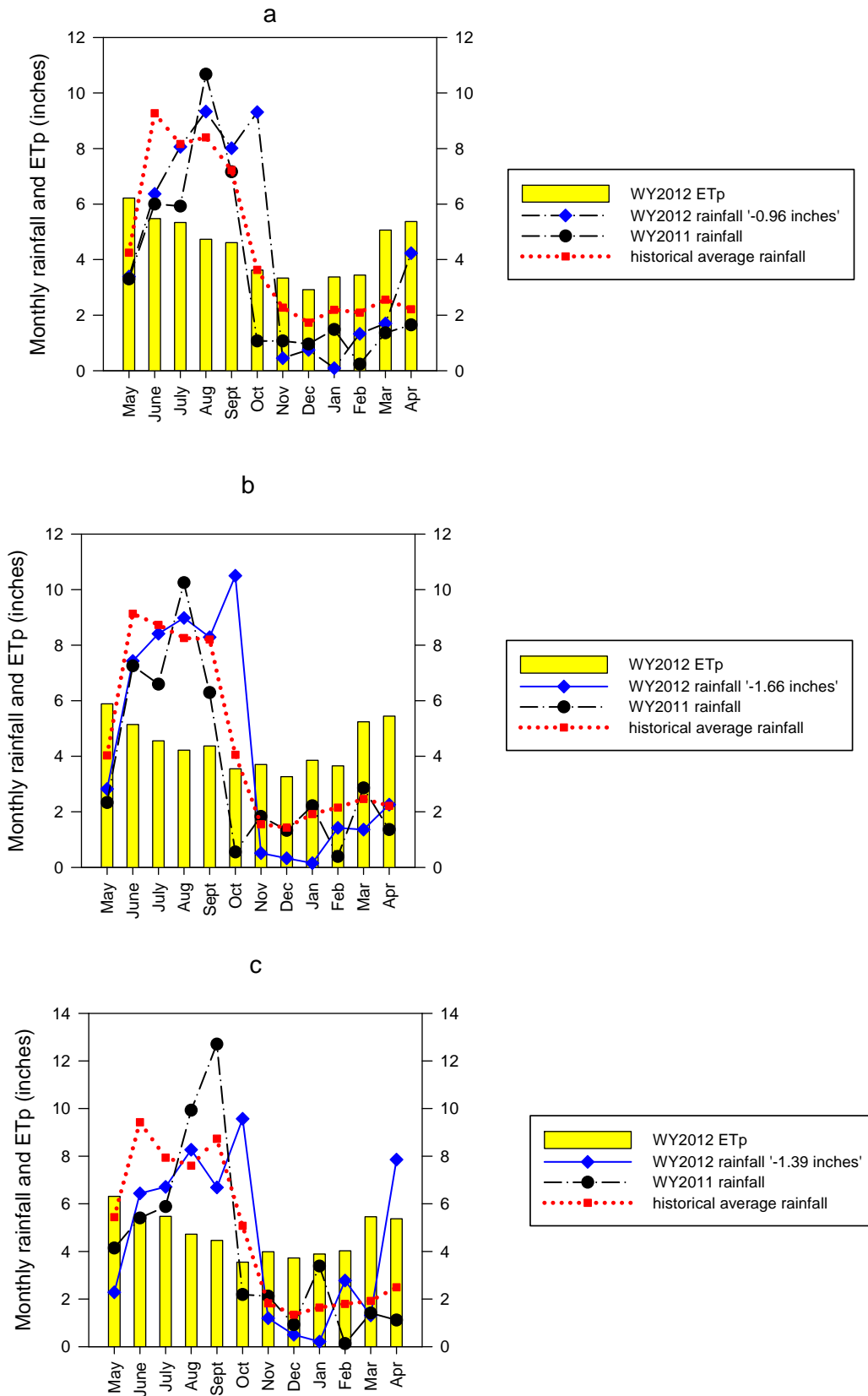
**Figure 1.** Monthly rainfall and potential evapotranspiration (ETp) for (a) Upper Kissimmee, (b) Lower Kissimmee, (c) Lake Okeechobee, and (d) East Everglades Agricultural Area rainfall areas.



**Figure 2.** Monthly rainfall and ETp for (a) West Everglades Agricultural Area, (b) Water Conservation Areas 1 and 2, (c) Water Conservation Area 3, and (d) Martin/St. Lucie rainfall areas.



**Figure 3.** Monthly rainfall and ETp for (a) Palm Beach, (b) Broward, (c) Miami-Dade, and (d) East Caloosahatchee rainfall areas.



**Figure 4.** Monthly rainfall and ETp for (a) Big Cypress Preserve, (b) Southwest Coast, and (c) Everglades National Park rainfall areas.